



# SURVEILLANCE SOFTWARE

WISENET SSM

**Hanwha Vision Europe**

Heriot House, Heriot Road, Chertsey, Surrey, KT16 9DT, United Kingdom  
Tel : +44.1932.57.8100  
[www.hanwhavision.eu](http://www.hanwhavision.eu)

© Hanwha Vision Co., Ltd. All rights reserved.

DESIGN AND SPECIFICATIONS ARE SUBJECT TO CHANGE WITHOUT NOTICE  
Under no circumstances, this document shall be reproduced, distributed or changed, partially or wholly, without formal authorization of Hanwha Vision Co.,Ltd.



## Convenience for everyone

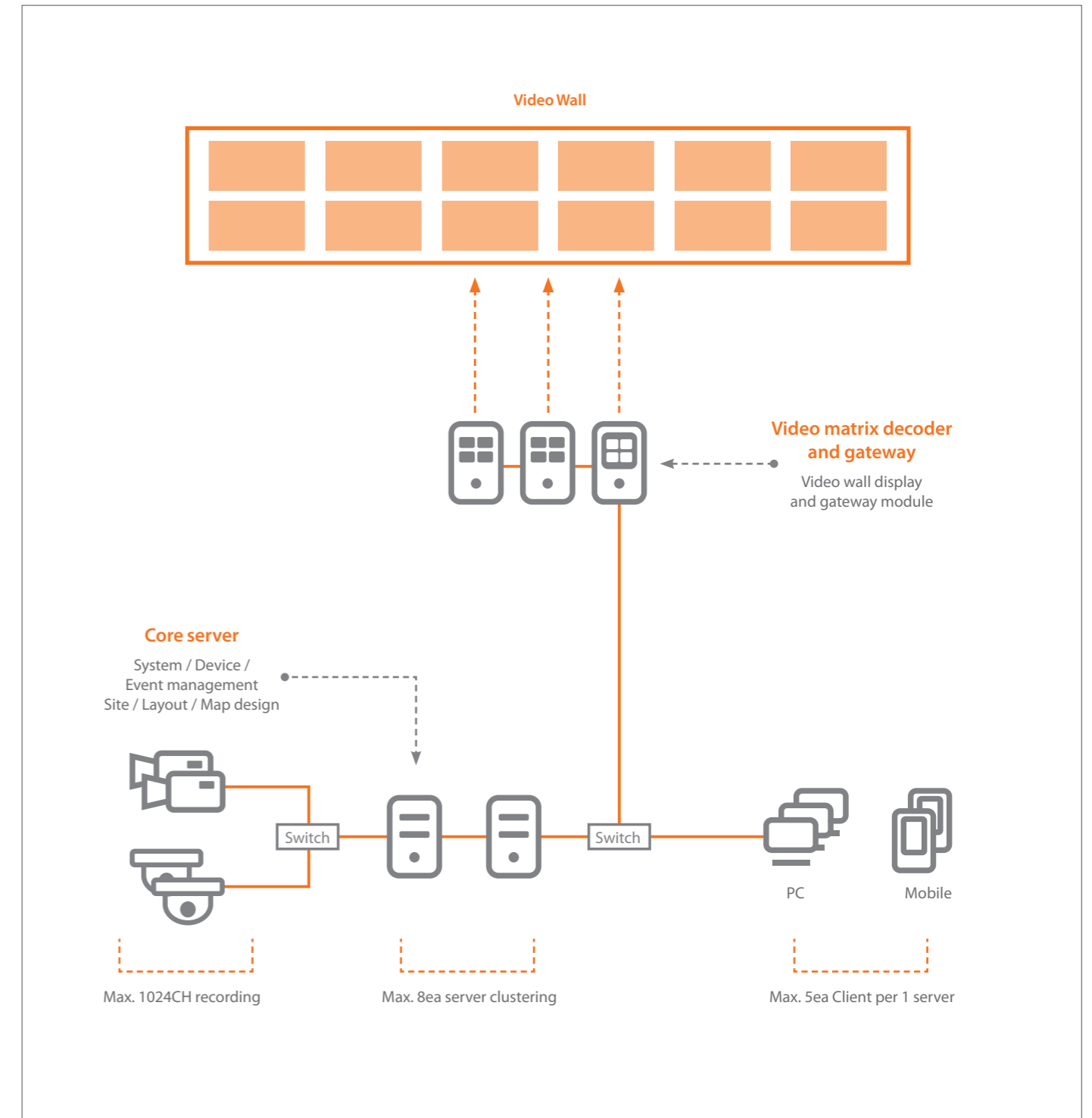
# WISENET SSM



## Features

- **Centralised Management**  
Operators can configure all servers, cameras, recorders as one system and manage user/group policy with an easy user interface.
- **Distributed Computing Architecture**  
Wisenet SSM's modular architecture allows the software to effectively manage any system, from low-end solutions to enterprise level installations.
- **Extended Scalability**  
Wisenet SSM is suitable for both small installation and larger installations, with numerous features for enterprise systems including Federation, Failover, Transaction Server and 3rd party integration.
- **Guaranteed Reliability**  
Failover redundancy controls, automatic network-fail recovery (ARB) and a full system dashboard ensure that your Wisenet SSM system will operate reliably at all times.
- **Flexible System Architecture**  
The Transaction Server functionality provides easy integration with third party systems, including access control and intrusion detection.
- **Efficient Monitoring**  
Fully configurable event rules and configurations make it easy for system operators to identify important incidents.
- **Powerful Search Engine**  
Wisenet SSM offers a wide range of search options which can assist operators to quickly and easily retrieve evidential data.

## System configuration



## Full Core Feature / 45 Days

Users are given a 45 days trial period before they can start activating their licence. During the trial period, all features are available for use including recording. After the trial, Wisenet SSM will generate a warning message and only limited features will be available.



## Easy Playback in Live Streaming & New Timeline

With Wisenet SSM's user friendly interface, operators can playback recorded video during live streaming and easily control playback up to 32x as well as reverse playback. In addition, you can select a specific image for search. Wisenet SSM displays the events in the same area as thumbnails making it easier to carry out a detailed search.



Live

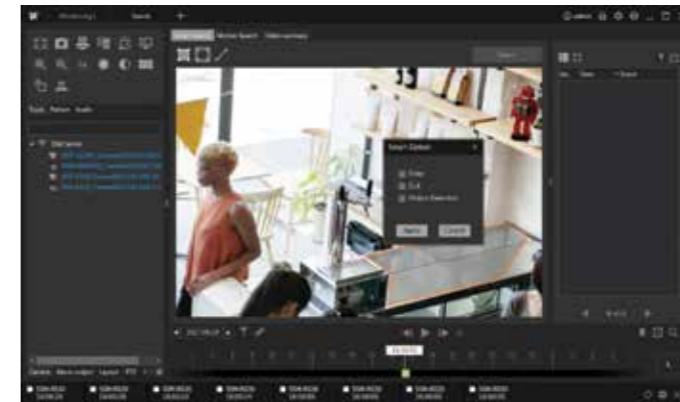


Playback

## Searching mode options

Wisenet SSM provides three major types of advanced search mode for quick evidence retrieval.

- Smart Search can search by virtual area and virtual line
- Motion Search (and Thumbnail Search) can retrieve evidence within a very short period of time.
- Video Summary is one of the key features of Wisenet SSM providing a minute-long clip of 24 hours of recorded video.



Smart search

## Efficient monitoring through powerful event management

All event-related features such as event priority, event colouring, rule-based event action setup and realtime event thumbnail display enable more efficient monitoring. Wisenet SSM can also provide a separate event viewer window that provides real-time event logs with a single channel preview.

- Operators can monitor each event and add notes.
- Audio broadcasting is also available so that warnings can be issued in a dangerous event situations.



## Specifications

System		
Maximum Number of Monitoring Channel	Up to 10,000 Channels / domain	
Maximum Number of Recording Channel	Up to 10,000 Channels / domain	
Architecture	Server / Client	
Clients	Console Client, Mobile Viewer	
Supported Devices	Network camera / encoder / decoder, DVR / NVR, Controller	
Basic Component		
Core Server	Centralised Licence Management	45 days free trial
	Server Clustering	Data sharing, Failure management
	System Dashboard	Real-time system status monitoring
	User Management	Device access authority, Feature level authority
	Federation	Multi-tier domain federation, Max 100 domains
	Centralised Device Configuration	Auto / Manual Device and add-on server registration
	Device Connection	Up to 3,000 Channels
	Event Configuration	4 levels event priority, Configurable event color
	Event Action	Rule based event and triggering action setup
	Layout & Pattern	User defined layout and tile pattern
Console Client	Tab Based Window	Live, Advanced search, Event, Configuration
	Number of Channels	Max 100 channels, Max 64 channels per tab
	Decoding	Hardware accelerator supported (NVIDIA CUDA)
	Playback	Multi channel playback, Bookmark
	Real-time Event	Event filtering by status, type, and priority
	Event Search	Event acknowledgement history
	Smart Search	Search by virtual area and virtual line

## Memo

---

---

---

---

---

---

---

---

---

---

---

---

---

---

---

---

---

---

---

---

---

---