



EMC TEST REPORT For CE

Test Report No. : KES-EM-22T0159-R1
Date of Issue : Feb. 24, 2023
Product name : NETWORK CAMERA
Model/Type No. : XNP-6400RW
Variant Model : -
Applicant : Hanwha Vision Co., Ltd
Applicant Address : 6, Pangyo-ro 319Beon-gil, Bundang-gu, Seongnam-si,
Gyeonggi-do, Republic of Korea
Manufacturer : 1. HANWHA VISION VIETNAM COMPANY LIMITED
2. D-TECH CO.,LTD.
Manufacturer Address : 1. Lot O-2, Que Vo Industrial Zone extended area,
Nam Son commune, Bac Ninh city, Bac Ninh province, Vietnam
2. 173-25, Saneop-ro, Gwonseon-gu, Suwon-si, Gyeonggi- do,
Korea (Suwon Industrial Complex)
Date of Receipt : Jan. 11, 2022
Test date : Jan. 14, 2022 ~ Jan. 17, 2022
Test Results : ☒ **In Compliance** ☐ **Not in Compliance**

Tested by

김세헌

Reviewed by

Se Heon, Kim
EMC Test Engineer

Dong-Hun, Jang
EMC Technical Manager

Tested by Ki Man, Kim
(Retries person)
Proxy signature : Se Heon, Kim

This test report is not related to KS Q ISO/IEC 17025 and KOLAS.

This report shall not be reproduced except in full, without the written approval of KES Co., Ltd.
The results shown in this test report refer only to the sample(s) tested unless otherwise stated.
The authenticity of the test report, contact kes@kes.co.kr

**KES Co., Ltd.**

3701, 40, Simin-daero 365beon-gil,
Dongan-gu, Anyang-si, Gyeonggi-do, 14057, Korea
Tel: +82-31-425-6200 / Fax: +82-31-424-0450
www.kes.co.kr

Report No.:

KES-EM-22T0159-R1

Page (2) of (70)

REPORT REVISION HISTORY

Date	Test Report No.	Revision History
Jan. 27, 2022	KES-EM-22T0159	Issued
Feb. 24, 2023	KES-EM-22T0159-R1	Change the Applicant and Manufacturer at the request of the customer

This report shall not be reproduced except in full, without the written approval of KES Co., Ltd. This document may be altered or revised by KES Co., Ltd. personnel only, and shall be noted in the revision section of the document. Any alteration of this document not carried out by KES Co., Ltd. will constitute fraud and shall nullify the document.

This report shall not be reproduced except in full, without the written approval of KES Co., Ltd.
The results shown in this test report refer only to the sample(s) tested unless otherwise stated.
The authenticity of the test report, contact kes@kes.co.kr



TABLE OF CONTENTS

1.0	General Product Description	4
1.1	Test Voltage & Frequency	8
1.2	Variant Model Differences.....	8
1.3	Device Modifications	8
1.4	Equipment Under Test.....	8
1.5	Support Equipments	9
1.6	External I/O Cabling	10
1.7	EUT Operating Mode(s)	10
1.8	Configuration.....	11
1.9	Remarks when standards applied	12
1.10	Calibration Details of Equipment Used for Measurement	12
1.11	Test Facility	12
1.12	Laboratory Accreditations and Listings	12
2.0	Test Regulations.....	13
2.1	Conducted Emissions at Mains Power Ports	14
2.2	Conducted Emissions at Telecommunication Ports	15
2.3	Radiated Electric Field Emissions(Below 1 GHz)	16
2.4	Radiated Electric Field Emissions(Above 1 GHz)	17
2.5	Harmonic Current Emissions	18
2.6	Voltage Fluctuations and Flicker	19
3.0	Criteria for compliance	20
3.1	Electrostatic Discharge.....	22
3.2	Radiated Electric Field Immunity	26
3.3	Electrical Fast Transients/Bursts	29
3.4	Surge Transients	31
3.5	Conducted Disturbance	34
3.6	Voltage Dips and Short Interruptions	37
APPENDIX A – TEST DATA.....		39
Conducted Emissions at Mains Power Ports.....		39
Conducted Emissions at Telecommunication Ports		41
Radiated Electric Field Emissions(Below 1 GHz)		42
Radiated Electric Field Emissions(Above 1 GHz).....		43
Harmonic Current Emissions and Voltage Fluctuations and Flicker		44
Test Setup Photos and Configuration		47
Conducted Emissions at Mains Power Ports.....		47
Conducted Emissions at Telecommunication Ports		48
Radiated Electric Field Emissions(Below 1 GHz)		49
Radiated Electric Field Emissions(Above 1 GHz).....		50
Harmonic Current Emissions and Voltage Fluctuations and Flicker		51
Electrostatic Discharge		52
Radiated Electric Field Immunity		52
Electrical Fast Transients/Bursts		53
Surge Transients.....		53
Conducted Disturbance.....		54
Voltage Dips and Short Interruptions.....		54
EUT External Photographs		55
EUT Internal Photographs		56



1.0 General Product Description

Main Specifications of EUT are:

Video	
Imaging Device	1/2.8" 2MP CMOS
Effective Pixels	1944(H)x1212(V)
Min. Illumination	Color: 0.05Lux(F1.6, 1/30sec) BW: 0Lux(IR LED On)
Video Out	None
Lens	
Focal Length (Zoom Ratio)	4.25~170mm(40x) zoom
Max. Aperture Ratio	F1.6(Wide)~F4.95(Tele)
Angular Field of View	H: 65.66°(Wide)~1.88°(Tele) / V: 39.40°(Wide)~1.09°(Tele)
Min. Object Distance	Wide: 1.5m(4.92ft), Tele: 3m(9.84ft)
Focus Control	Oneshot AF, Focus save
Lens Type	DC auto iris
Pan / Tilt / Rotate	
Pan Range	360° Endless
Pan Speed	Max. 500°/sec, Manual: 0.024°/sec~250°/sec
Tilt Range	110°(-20°~90°)
Tilt Speed	Max. 350°/sec, Manual: 0.024°/sec~250°/sec
Sequence	Preset(300ea), Swing, Group(6ea), Trace, Tour, Auto Run, Schedule, Preset trace recording
Preset Accuracy	±0.1°
Azimuth	Support
Auto Tracking	Object auto tracking(Person/Vehicle)
Operational	
IR Viewable Length	300m(984.25ft)
Camera Title	Displayed up to 85 characters, Direction Indicator
Day & Night	Auto(ICR)/Color/BW/Schedule
Backlight Compensation	BLC, HLC, WDR
Wide Dynamic Range	150 dB
Digital Noise Reduction	SSNR V

This report shall not be reproduced except in full, without the written approval of KES Co., Ltd.
The results shown in this test report refer only to the sample(s) tested unless otherwise stated.
The authenticity of the test report, contact kes@kes.co.kr

**KES Co., Ltd.**

3701, 40, Simin-daero 365beon-gil,
Dongan-gu, Anyang-si, Gyeonggi-do, 14057, Korea
Tel: +82-31-425-6200 / Fax: +82-31-424-0450
www.kes.co.kr

Report No.:
KES-EM-22T0159-R1
Page (5) of (70)

Digital Image Stabilization	Support(built-in gyro sensor)
Defog	Support
Motion Detection	8ea, 8point polygonal zones
Privacy Masking	32ea, rectangular Support - Color: Grey/Green/Red/Blue/Black/White - Mosaic
Gain Control	Low / Middle / High
White Balance	ATW / AWC / Manual / Indoor / Outdoor
LDC	None
Electronic Shutter Speed	Minimum / Maximum / Anti flicker (2~1/12,000sec)
Video Rotation	Flip, Mirror
Analytics	Directional detection, Fog detection, Face detection, Motion detection, Appear/Disappear, Enter/Exit, Loitering, Tampering, Virtual line, Shock detection * Audio detection, Sound classification(with NW I/O Box)
Business Intelligence	None
Serial Interface	None
Alarm I/O	None
Alarm Triggers	Analytics, Network disconnect * Alarm input(with NW I/O Box)
Alarm Events	File upload via FTP and e-mail Notification via e-mail SD/SDHC/SDXC or NAS recording at event triggers PTZ Preset * Alarm output(with NW I/O Box)
Audio In	None
Audio Out	None
Wiper	Support
Network	
Ethernet	RJ-45(10/100BASE-T)
Video Compression	H.265/H.264,MJPEG

This report shall not be reproduced except in full, without the written approval of KES Co., Ltd.
The results shown in this test report refer only to the sample(s) tested unless otherwise stated.
The authenticity of the test report, contact kes@kes.co.kr

**KES Co., Ltd.**

3701, 40, Simin-daero 365beon-gil,
Dongan-gu, Anyang-si, Gyeonggi-do, 14057, Korea
Tel: +82-31-425-6200 / Fax: +82-31-424-0450
www.kes.co.kr

Report No.:

KES-EM-22T0159-R1

Page (6) of (70)

Resolution	1920x1080, 1280x1024, 1280x960, 1280x720, 1024x768, 800x600, 800x448, 720x576, 720x480, 640x480, 640x360, 320x240
Max. Framerate	H.265/H.264: Max. 60fps/50fps(60Hz/50Hz) MJPEG: Max. 30fps/25fps(60Hz/50Hz)
Smart Codec	Manual(5ea area), WiseStream II
Video Quality Adjustment	H.264/H.265: Target bitrate level control MJPEG: Target bitrate level control
Bitrate Control	H.264/H.265: CBR or VBR MJPEG: VBR
Streaming	Unicast(20 users) / Multicast (128 user) Multiple streaming(Up to 10 profiles)
Audio Compression	None
Protocol	IPv4, IPv6, TCP/IP, UDP/IP, RTP(UDP), RTP(TCP), RTCP, RTSP, NTP, HTTP, HTTPS, SSL/TLS, DHCP, FTP, SMTP, ICMP, IGMP, SNMPv1/v2c/v3(MIB-2), ARP, DNS, DDNS, QoS, PIM-SM, UPnP, Bonjour, LLDP, SRTP
Security	HTTPS(SSL) Login Authentication Digest Login Authentication IP Address Filtering User access log 802.1X Authentication(EAP-TLS, EAP-LEAP) Device certificate(Hanwha Techwin Root CA)
Edge Storage	Micro SD/SDHC/SDXC 2slot 1TB
Application Programming Interface	ONVIF Profile S/G/T SUNAPI(HTTP API) Wisenet open platform
Webpage Language	English, Korean, Chinese, French, Italian, Spanish, German, Japanese, Russian, Swedish, Portuguese, Czech, Polish, Turkish, Dutch, Hungarian, Greek

This report shall not be reproduced except in full, without the written approval of KES Co., Ltd.
The results shown in this test report refer only to the sample(s) tested unless otherwise stated.
The authenticity of the test report, contact kes@kes.co.kr

**KES Co., Ltd.**

3701, 40, Simin-daero 365beon-gil,
Dongan-gu, Anyang-si, Gyeonggi-do, 14057, Korea
Tel: +82-31-425-6200 / Fax: +82-31-424-0450
www.kes.co.kr

Report No.:
KES-EM-22T0159-R1
Page (7) of (70)

Web Viewer	Supported OS: Windows 7, 8.1, 10, Mac OS X 10.10, 10.11, 10.12 Recommended Browser: Google Chrome Supported Browser: MS Explore11, MS Edge, Mozilla Firefox(Window 64bit only), Apple Safari(Mac OS X only)
Memory	4GB RAM, 512MB Flash
Environmental	
Operating Temperature / Humidity (TBD)	-40°C~+60°C (-40°F ~ +140°F) / Less than 95% RH(Non-condensing) Maximum Temperature : +60°C(+140°F), □□□ within 8 hours Absolute maximum(According to NEMA TS2, 2.2.7):+74°C → TBD
Storage Temperature / Humidity	-50°C~+60°C (-58°F~+140°F) / Less than 95% RH(Non-condensing)
Certification	IP66, IK10(Camera body only→TBD), NEMA4X
Electrical	
Input Voltage(TBD)	HPoE(IEEE802.3bt, Class7, Type4). TBD(Power Class)
Power Consumption(TBD)	Typ.20W, Max.35W Camera only
Mechanical	
Color / Material	White, Black / Aluminum + Polycarbonate + ASA (Sun shield) + Tempered glass (Window)
RAL Code	White : RAL 9003 / Black : RAL 9005
Product dimensions / weight	Ø184.9 x 318.8.mm / 5.4Kg
Conduit hole	None
Hanging mount(Dome)	None
Skin cover(Dome)	None
Weather cap(Dome)	None
Power module	None
Backbox	None

This report shall not be reproduced except in full, without the written approval of KES Co., Ltd.
The results shown in this test report refer only to the sample(s) tested unless otherwise stated.
The authenticity of the test report, contact kes@kes.co.kr



1.1 Test Voltage & Frequency

Unless indicated otherwise on the individual data sheet or test results, the test voltage and frequency was as indicated below.

☒ AC 230 V, 50 Hz

1.2 Variant Model Differences

Not applicable

1.3 Device Modifications

Not applicable

1.4 Equipment Under Test

Description	Model Number	Serial Number	Manufacturer	Remarks
NETWORK CAMERA	XNP-6400RW	-	HANWHA VISION VIETNAM COMPANY LIMITED	EUT
Fiber PoE Injector	PT-PSE109GBRO- AH-S	-	Dongguan PROCET Network Technology Co.,Ltd	EUT

**KES Co., Ltd.**

3701, 40, Simin-daero 365beon-gil,
Dongan-gu, Anyang-si, Gyeonggi-do, 14057, Korea
Tel: +82-31-425-6200 / Fax: +82-31-424-0450
www.kes.co.kr

Report No.:
KES-EM-22T0159-R1
Page (9) of (70)

1.5 Support Equipments

Description	Model Number	Serial Number	Manufacturer	Remarks
Notebook1	HSN-Q07C	5CD8367KND	HP	-
Notebook1 Adapter	HSTNN-CA40	WFTKU0ERLB4Q CH	HP	-
Notebook2	P98F004	21599158359	DELL INC.	-
Notebook2 Adapter	LA240PM190	-	LITE-ON TECHNOLOGY (CHANGZHOU)CO.,LTD.	-
Micro SD Card1	-	-	SanDisk	8 GB
Micro SD Card2	-	-	SanDisk	8 GB
Converter	SFC2000-SFP	-	Soltech	-
Converter Adapter	FJ- SW1260502000DK	-	-	-
optical module1	-	-	-	-
optical module2	-	-	-	-

This report shall not be reproduced except in full, without the written approval of KES Co., Ltd.
The results shown in this test report refer only to the sample(s) tested unless otherwise stated.
The authenticity of the test report, contact kes@kes.co.kr

1.6 External I/O Cabling

Start		END		Cable Spec.	
Description	I/O Port	Description	I/O Port	Length	Shield
NETWORK CAMERA (EUT)	SLOT	Micro SD Card1	SLOT	-	-
	SLOT	Micro SD Card2	SLOT	-	-
	RJ-45 (PoE)	Fiber PoE Injector	RJ-45 (PoE)	1.5	U
Fiber PoE Injector (EUT)	RJ-45 (LAN)	Notebook1	RJ-45 (LAN)	3.0	U
	SFP	optical module1	SFP	-	-
	external ground	Grounding	external ground	1.7	-
Notebook1	DC Jack	Notebook1 Adapter	DC Jack	1.1	U
Converter	DC Jack	Converter Adapter	DC Jack	1.2	U
	SFP	optical module2	SFP	-	-
	RJ-45	Notebook2	RJ-45	1.0	U
Notebook2	DC Jack	Notebook2 Adapter	DC Jack	1.5	U
optical module1	Optical	optical module2	Optical	3.5	U

* Unshielded=U, Shielded=S

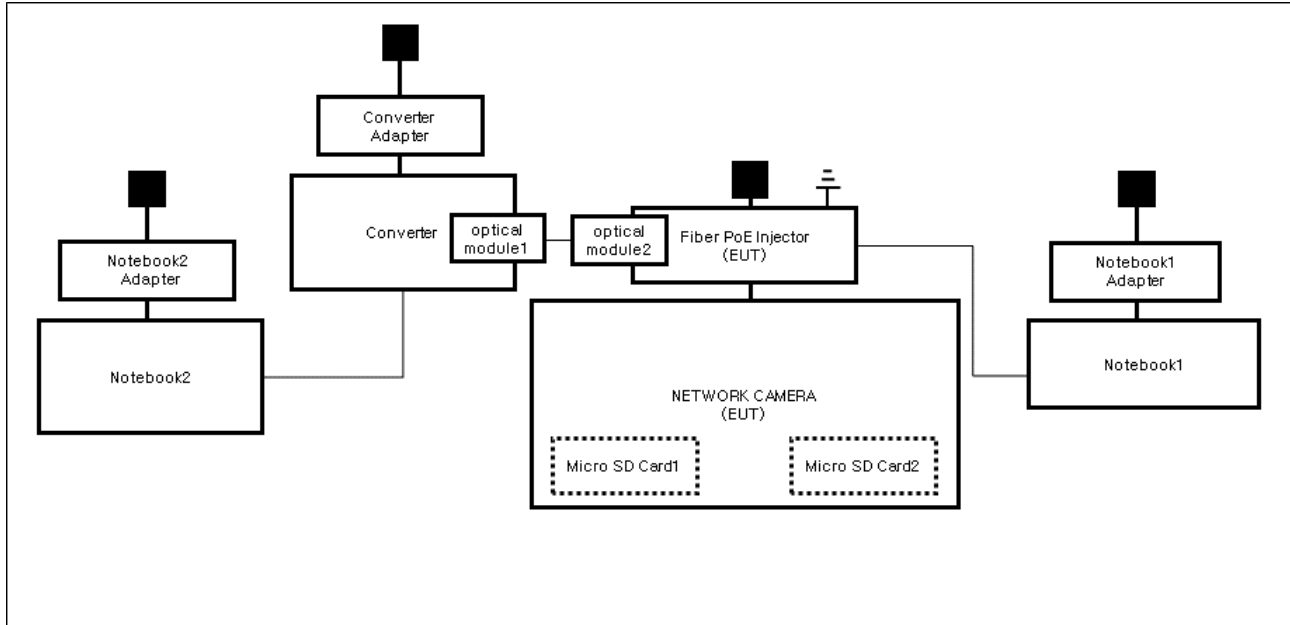
1.7 EUT Operating Mode(s)

Test Mode	operating
Operation mode	Check if the camera video output works properly in the web viewer, check if the network operation is working properly through the ping test, and check if the recording is normally done on the Micro SD card after the test.

EUT Test operating S/W		
Name	Version	Manufacture Company
Web Viewer	-	Hanwha Vision Co., Ltd

1.8 Configuration

■ AC Main
 □ DC Main



1.9 Remarks when standards applied

N/A







1.10 Calibration Details of Equipment Used for Measurement

Test equipment and test accessories are calibrated on regular basis. The maximum time between calibrations is one year or what is recommended by the manufacturer, whichever is less.

1.11 Test Facility

The measurement facility is located at 473-21, Gayeo-ro, Yeosu-si, Gyeonggi-do, 12658, Korea, Republic of. The sites are constructed in conformance with the requirements of ANSI C63.4a-2017 and CISPR 16-1-4:2019

1.12 Laboratory Accreditations and Listings

Country	Agency	Scope of Accreditation	Logo
KOREA	RRA	EMI (3 m & 10 m Semi-Anechoic Chamber and conducted test site) EMS (ESD, RS, EFT/Burst, Surge, CS, Magnetic, Dips and interruptions)	 KR0100
International	KOLAS	EMI (3 m & 10 m Semi-Anechoic Chamber and conducted test site) EMS (ESD, RS, EFT/Burst, Surge, CS, Magnetic, Dips and interruptions)	 KT489
USA	FCC	3 m & 10 m Semi-Anechoic Chamber Conducted test site to perform FCC Part 15/18 measurements.	 KR0100
Canada	ISED	3 m & 10 m Semi-Anechoic Chamber and Conducted test site	 23298
JAPAN	VCCI	EMI (3 m & 10 m Semi-Anechoic Chamber and conducted test site)	 C-20136, T-20137, R-20181, G-20176
Europe	TÜV SÜD	EMI (3 m & 10 m Semi-Anechoic Chamber and conducted test site) EMS (ESD, RS, EFT/Burst, Surge, CS, Magnetic, Dips and interruptions)	 CARAT 001633 0004



2.0 Test Regulations

The emissions tests were performed according to following regulations:

☒ **EMC – Directive 2014/30/EU**

☒ EN 55032:2015/A11:2020

☒ Class A

☐ Class B

☒ EN 50130-4:2011

☒ EN 61000-3-2:2014

☒ EN 61000-3-3:2013

☒ **EMC – Regulations 2016**

☒ EN 55032:2015/A11:2020

☒ Class A

☐ Class B

☒ EN 50130-4:2011

☒ EN 61000-3-2:2014

☒ EN 61000-3-3:2013

**KES Co., Ltd.**

3701, 40, Simin-daero 365beon-gil,
Dongan-gu, Anyang-si, Gyeonggi-do, 14057, Korea
Tel: +82-31-425-6200 / Fax: +82-31-424-0450
www.kes.co.kr

Report No.:

KES-EM-22T0159-R1

Page (14) of (70)

2.1 Conducted Emissions at Mains Power Ports

Test Date

Jan. 14, 2022

Test Location

Electro wave Shieldroom #6

Test Equipment

Used	Description	Model Number	Manufacturer	Serial Number	Cal. Due
<input checked="" type="checkbox"/>	EMI Test S/W	EMC32	R & S	9.12.00	-
<input checked="" type="checkbox"/>	EMI TEST RECEIVER	ESR3	R & S	101783	12, 28, 2022
<input checked="" type="checkbox"/>	LISN	ENV216	R & S	101787	12, 27, 2022
<input checked="" type="checkbox"/>	LISN	ESH2-Z5	R & S	100450	12, 27, 2022
<input checked="" type="checkbox"/>	PULSE LIMITER	ESH3-Z2	R & S	101915	12, 27, 2022

Test Conditions

Temperature: (22,7 ± 0,1) °C

Relative Humidity: (43,6 ± 0,2) % R.H.

Frequency Range of Measurement

150 kHz to 30 MHz

Instrument Settings

IF Band Width: 9 kHz

Test Results

The requirements are:

- ☒ PASS
☐ NOT PASS
☐ NOT APPLICABLE

RemarksSee Appendix A for test data.

This report shall not be reproduced except in full, without the written approval of KES Co., Ltd.
The results shown in this test report refer only to the sample(s) tested unless otherwise stated.
The authenticity of the test report, contact kes@kes.co.kr

2.2 Conducted Emissions at Telecommunication Ports

Test Date

Jan. 14, 2022

Test Location

Electro wave Shieldroom #6

Test Equipment

Used	Description	Model Number	Manufacturer	Serial Number	Cal. Due
<input checked="" type="checkbox"/>	EMI Test S/W	EMC32	R & S	9.12.00	-
<input checked="" type="checkbox"/>	EMI TEST RECEIVER	ESR3	R & S	101783	12, 28, 2022
<input checked="" type="checkbox"/>	LISN	ENV216	R & S	101787	12, 27, 2022
<input checked="" type="checkbox"/>	LISN	ESH2-Z5	R & S	100450	12, 27, 2022
<input checked="" type="checkbox"/>	PULSE LIMITER	ESH3-Z2	R & S	101915	12, 27, 2022
<input checked="" type="checkbox"/>	8-WIRE ISN CAT3,5	ENY81	R & S	100174	12, 28, 2022
<input type="checkbox"/>	ISN	ISN S8	SCHWARZBECK	ISN-S8-0019	03, 10, 2022

Test Conditions

Temperature: (22,7 ± 0,1) °C

Relative Humidity: (43,6 ± 0,1) % R.H.

Frequency Range of Measurement

150 kHz to 30 MHz

Instrument Settings

IF Band Width: 9 kHz

Test Results

The requirements are:

- ☒ PASS
☐ NOT PASS
☐ NOT APPLICABLE

Remarks- See Appendix A for test data.- For Ethernet interfaces, measurements are required at the highest data rate supported by the interface.

**KES Co., Ltd.**

3701, 40, Simin-daero 365beon-gil,
Dongan-gu, Anyang-si, Gyeonggi-do, 14057, Korea
Tel: +82-31-425-6200 / Fax: +82-31-424-0450
www.kes.co.kr

Report No.:

KES-EM-22T0159-R1

Page (16) of (70)

2.3 Radiated Electric Field Emissions(Below 1 GHz)

Test Date

Jan. 14, 2022

Test Location☐ OPEN AREA TEST SITE #2☒ SEMI ANECHOIC CHAMBER #4(10m)**Test Equipment**

Used	Description	Model Number	Manufacturer	Serial Number	Cal. Due
<input checked="" type="checkbox"/>	EMI Test S/W	EP5/RE	TOYO Corporation	6.0.0	-
<input checked="" type="checkbox"/>	EMI TEST RECEIVER	ESU26	R & S	100551	04, 01, 2022
<input checked="" type="checkbox"/>	AMPLIFIER	SCU 01	R & S	100603	11, 24, 2022
<input checked="" type="checkbox"/>	TRILOG-BROADBAND ANTENNA	VULB9163	Schwarzbeck	715	12, 08, 2022
<input checked="" type="checkbox"/>	ATTENUATOR	8491A	HP	32173	03, 10, 2022

Test Conditions

Temperature: (23,0 ± 0,2) °C

Relative Humidity: (44,0 ± 0,2) % R.H.

Frequency Range of Measurement

30 MHz to 1 GHz

Instrument Settings

IF Band Width: 120 kHz

Test Results

The requirements are:

- ☒ PASS
☐ NOT PASS
☐ NOT APPLICABLE

RemarksSee Appendix A for test data.

This report shall not be reproduced except in full, without the written approval of KES Co., Ltd.
The results shown in this test report refer only to the sample(s) tested unless otherwise stated.
The authenticity of the test report, contact kes@kes.co.kr



2.4 Radiated Electric Field Emissions(Above 1 GHz)

Test Date

Jan. 15, 2022

Test Location

SEMI ANECHOIC CHAMBER #3

Test Equipment

Used	Description	Model Number	Manufacturer	Serial Number	Cal. Due
<input checked="" type="checkbox"/>	EMI Test S/W	EP5/RE	TOYO Corporation	6.0.0	-
<input checked="" type="checkbox"/>	EMI TEST RECEIVER	ESR7	R & S	101190	08, 03, 2022
<input checked="" type="checkbox"/>	PREAMPLIFIER	8449B	AGILENT	3008A01967	04, 07, 2022
<input type="checkbox"/>	ATTENUATOR	8491A	HP	35496	03, 10, 2022
<input checked="" type="checkbox"/>	DOUBLE RIDGED HORN ANTENNA	SAS-571	A.H.SYSTEM,INC	781	03, 11, 2022

Test Conditions

Temperature: (22,9 ± 0,2) °C

Relative Humidity: (44,3 ± 0,2) % R.H.

Frequency Range of Measurement

1 GHz to 6 GHz

Instrument Settings

IF Band Width: 1 MHz

Test Results

The requirements are:

- ☒ PASS
☐ NOT PASS
☐ NOT APPLICABLE

Remarks

See Appendix A for test data.



2.5 Harmonic Current Emissions

Test Date

Jan. 15, 2022

Test Location

Electro wave Shieldroom #3

Test Equipment

Used	Description	Model Number	Manufacturer	Serial Number	Cal. Due
<input checked="" type="checkbox"/>	EMI Test S/W	net.control	EM TEST	2.1.4	-
<input checked="" type="checkbox"/>	DIGITAL POWER ANALYZER	DPA 500N	EM TEST	V1024106759	04, 06, 2022
<input checked="" type="checkbox"/>	POWER SOURCE	ACS 500N6	EM TEST	V1024106760	-

Test Conditions

Temperature: (22,3 ± 0,1) °C
Relative Humidity: (43,9 ± 0,1) % R.H.

Classification of Equipment for Harmonic Current Emissions

- ☒ Class A
☐ Class B
☐ Class C(Below 25 W)
☐ Class C(Above 25 W)
☐ Class D

Test Results

The requirements are:

- ☒ PASS
☐ NOT PASS
☐ NOT APPLICABLE

Remarks

See Appendix A for test data.



2.6 Voltage Fluctuations and Flicker

Test Date

Jan. 15, 2022

Test Location

Electro wave Shieldroom #3

Test Equipment

Used	Description	Model Number	Manufacturer	Serial Number	Cal. Due
<input checked="" type="checkbox"/>	EMI Test S/W	net.control	EM TEST	2.1.4	-
<input checked="" type="checkbox"/>	DIGITAL POWER ANALYZER	DPA 500N	EM TEST	V1024106759	04, 06, 2022
<input checked="" type="checkbox"/>	POWER SOURCE	ACS 500N6	EM TEST	V1024106760	-

Test Conditions

Temperature: (22,3 ± 0,2) °C
Relative Humidity: (43,9 ± 0,3) % R.H.

Test Results

The requirements are:

- ☒ PASS
☐ NOT PASS
☐ NOT APPLICABLE

Remarks

See Appendix A for test data.

3.0 Criteria for compliance

Criteria for compliance was based on the following guidelines:

EN 50130-4:2011 / BS EN 50130-4:2011/A1:2014 Alarm systems-Part 4: Electromagnetic compatibility Product family standard: Immunity requirements for components of fire, intruder and social alarm systems

The variety and the diversity of the apparatus within the scope of this document makes it difficult to define precise criteria for the evaluation of the immunity test results.

If as a result of the application of the tests defined in this standard, the apparatus becomes dangerous or unsafe then the apparatus shall be deemed to have failed the test.

A functional description and a definition of performance by the manufacture and noted in the test

report, based on the following criteria:

Electrostatic discharge

There shall be no damage, malfunction or change of status due to the conditioning.

Flickering of an indicator during the application of discharge is permissible, providing that is no residual change in the EUT or any change in outputs, which could be interpreted by associated equipment as a change.

Radiated electromagnetic fields

There shall be no damage, malfunction or change of status due to the conditioning.

Flickering of an indicator during the application of discharge is permissible, providing which could be interpreted by associated equipment as a change, and no such

Flickering of indicators occurs at a field strength of 3 V/m.

For components of CCTV systems, where the picture is allowed at 10 V/m, providing.

(a) there is no permanent damage or change to EUT

(e.g. no corruption of memory or changes to programmable setting etc.)

(b) at 3 V/m, any deterioration of the picture is so minor that the system could still be used; and

(c) there is no observable deterioration of the picture at 1 V/m.



Fast transient burst / slow high energy voltage surge

There shall be no damage, malfunction or change of status due to the conditioning.
Flickering of an indicator during the application of discharge is permissible, providing
That there is no residual is permissible, providing that there is no residual change in the EUT or
any
change in outputs, which could be interpreted by associated equipment as a change.

Conducted RF immunity

There shall be no damage, malfunction or change of status due to the conditioning.
Flickering of an indicator during the application of discharge is permissible, providing
That there is no residual is permissible, providing that there is no residual change in the EUT or
any
change in outputs, which could be interpreted by associated equipment as a change,
and no such flickering of indicators oeuvres at $U = 130 \text{ dB}\mu\text{V}$.
For component of CCTV systems, where the status is monitored by observing the TV picture,
then deterioration of the picture is allowed at $U = 140 \text{ dB}\mu\text{V}$, providing:
(a) there is no permanent damage or change to the EUT
(e.g. no corruption of memory or changes to programmable settings etc.)
(b) at $U = 130 \text{ dB}\mu\text{V}$, any deterioration of the picture is so minor that the system could
still be used; and
(c) there in no observable deterioration of the picture at $U = 120 \text{ dB}\mu\text{V}$.

Voltage dip/interruption / Voltage variation

There shall be no damage, malfunction or change of status due to the conditioning.
Flickering of an indicator during the conditioning is permissible, providing that there is no
residual
change in the EUT or any change in outputs, which could be interpreted by associated
equipment
as a change. The EUT shall meet the acceptance criteria for the functional test, after the
conditioning.

3.1 Electrostatic Discharge

Reference Standard

EN 61000-4-2:2009
BS EN 61000-4-2:2009

Test Date

Jan. 17, 2022

Test Location

EMS-ESD: Electro wave Shieldroom #7

Test Equipment

Used	Description	Model Number	Manufacturer	Serial Number	Cal. Due
<input checked="" type="checkbox"/>	ESD SIMULATOR	ESS-2000	Noise Ken	ESS01Z0454	02, 01, 2022
<input checked="" type="checkbox"/>	HCP	-	KES	-	-
<input checked="" type="checkbox"/>	VCP	-	Noise Ken	-	-

Test Conditions

Temperature: (23,3 ± 0,1) °C
Relative Humidity: (43,9 ± 0,2) % R.H.
Atmospheric Pressure: (100,3 ± 0,0) kPa

Test Specifications

Discharge Factor: ≥ 1 s

Discharge Impedance: 330 ohm / 150 pF

Kind of Discharge: Air, Contact (direct and indirect)

Polarity: Positive and Negative

Number of Discharge: 10 at all locations for Air discharge
10 at all locations for Contact discharge

Discharge Voltage:	Contact <input type="checkbox"/> 2 kV <input type="checkbox"/> 4 kV <input checked="" type="checkbox"/> 6 kV <input type="checkbox"/> 8 kV <input type="checkbox"/> 15 kV	Air <input checked="" type="checkbox"/> 2 kV <input checked="" type="checkbox"/> 4 kV <input type="checkbox"/> 6 kV <input checked="" type="checkbox"/> 8 kV <input type="checkbox"/> 15 kV	HCP <input type="checkbox"/> 2 kV <input type="checkbox"/> 4 kV <input checked="" type="checkbox"/> 6 kV <input type="checkbox"/> 8 kV <input type="checkbox"/> 15 kV	VCP <input type="checkbox"/> 2 kV <input type="checkbox"/> 4 kV <input checked="" type="checkbox"/> 6 kV <input type="checkbox"/> 8 kV <input type="checkbox"/> 15 kV
--------------------	---	---	---	---

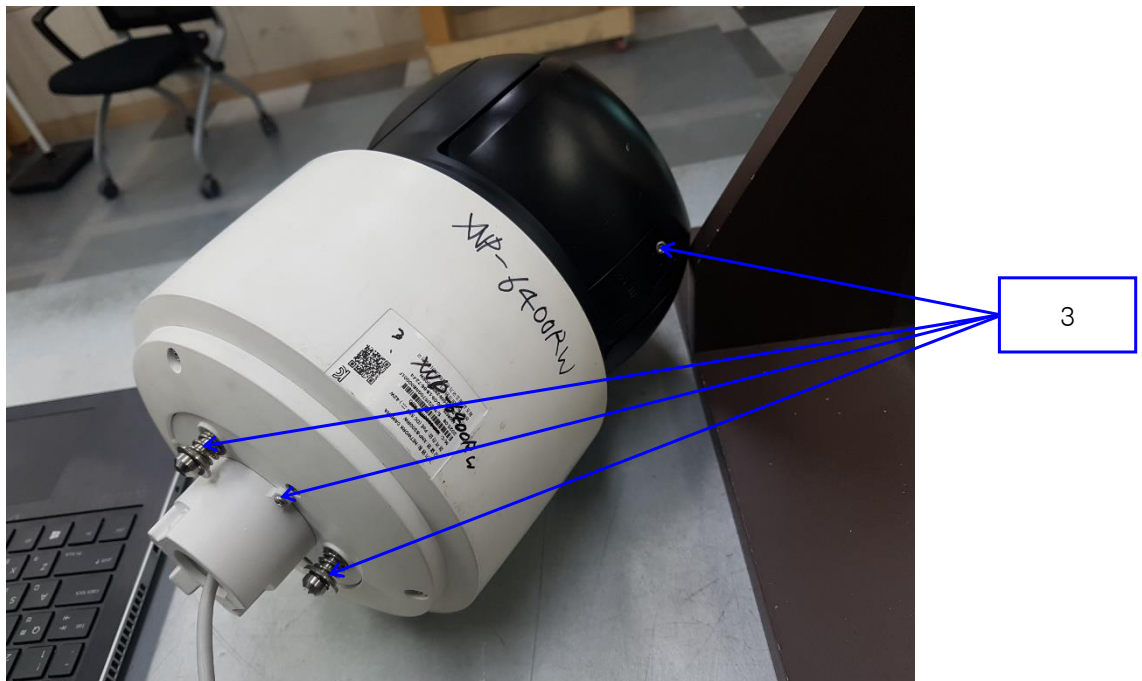
Notes: HCP: Horizontal coupling plane
VCP: Vertical coupling plane

Required Performance Criteria: ☒ Complied

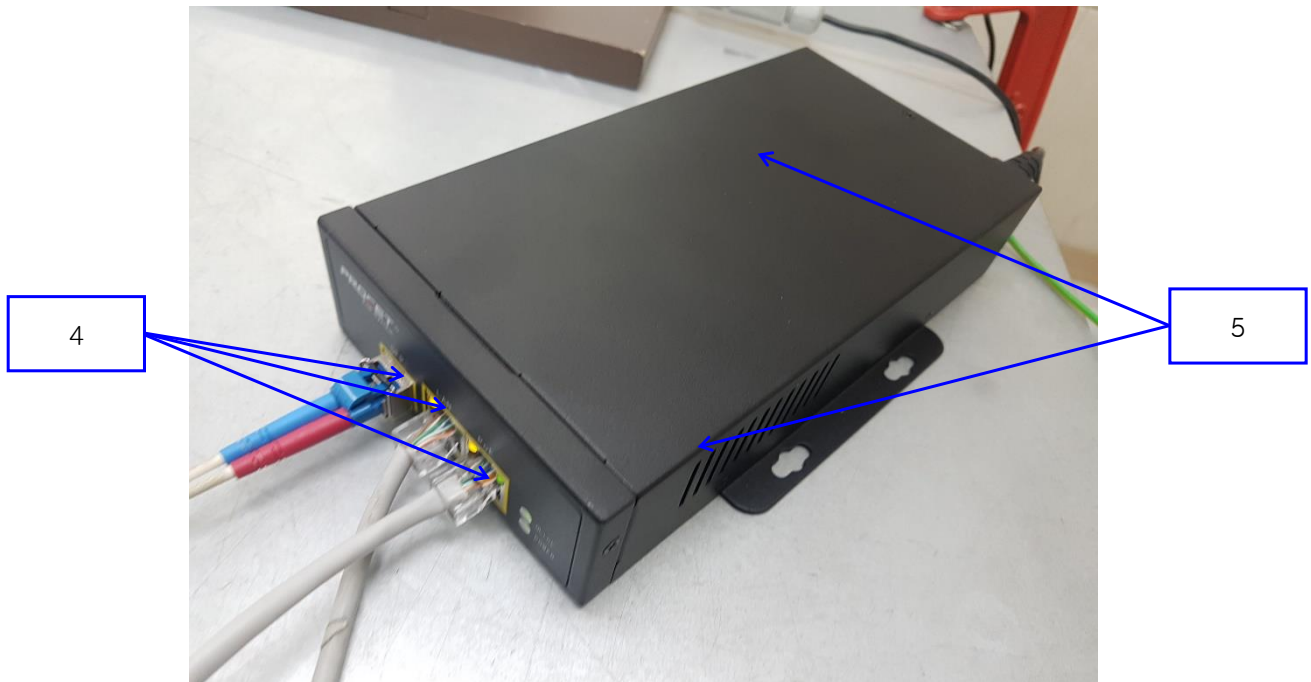
This report shall not be reproduced except in full, without the written approval of KES Co., Ltd.
The results shown in this test report refer only to the sample(s) tested unless otherwise stated.
The authenticity of the test report, contact kes@kes.co.kr

Location of Discharge:

Air
Contact



This report shall not be reproduced except in full, without the written approval of KES Co., Ltd.
The results shown in this test report refer only to the sample(s) tested unless otherwise stated.
The authenticity of the test report, contact kes@kes.co.kr



**KES Co., Ltd.**

3701, 40, Simin-daero 365beon-gil,
Dongan-gu, Anyang-si, Gyeonggi-do, 14057, Korea
Tel: +82-31-425-6200 / Fax: +82-31-424-0450
www.kes.co.kr

Report No.:

KES-EM-22T0159-R1

Page (25) of (70)

Test Data

No.	Test Point	Discharge Method	Observations	Remarks
1	HCP Contact	Contact Discharge	Complied	-
2	VCP Contact	Contact Discharge	Complied	-

Direct Discharge

No.	Test Point	Discharge Method	Observations	Remarks
1	Lens	Air Discharge	Complied	-
2	Enclosure	Air Discharge	Complied	-
3	Screw	Contact Discharge	Complied	-
4	PoE around the port	Contact Discharge	Complied	-
5	PoE Enclosure	Contact Discharge	Complied	-

Note: "Blank" = Not performed

Observations:

Complied – No degradation of function

Test Results

- ☒ PASS Required Performance Criteria
☐ NOT PASS Required Performance Criteria

RemarksPASS Required Performance Criteria

This report shall not be reproduced except in full, without the written approval of KES Co., Ltd.
The results shown in this test report refer only to the sample(s) tested unless otherwise stated.
The authenticity of the test report, contact kes@kes.co.kr

3.2 Radiated Electric Field Immunity

Reference Standard

EN 61000-4-3:2006 +A2:2010

BS EN 61000-4-3:2006 +A2:2010

Test Date

Jan. 15, 2022

Test Location

EMS-RS: ☐ SEMI ANECHOIC CHAMBER #2☒ SEMI ANECHOIC CHAMBER #3

Test Equipment

Used	Description	Model Number	Manufacturer	Serial Number	Cal. Due
<input checked="" type="checkbox"/>	EMS Test S/W	EMC32	R & S	10.10.02	-
<input checked="" type="checkbox"/>	SIGNAL GENERATOR	SMB 100A	Rohde & Schwarz	108252	08, 03, 2022
<input checked="" type="checkbox"/>	HIGH POWER DUAL AMP	SSA532	SUNGSAN	SSA532-001	-
<input checked="" type="checkbox"/>	POWER METER	E4419B	Agilent	GB40203000	04, 01, 2022
<input checked="" type="checkbox"/>	CW POWER SENSOR	E4412A	Agilent	US38488240	04, 01, 2022
<input checked="" type="checkbox"/>	CW POWER SENSOR	E4412A	Agilent	MY41501662	04, 01, 2022
<input checked="" type="checkbox"/>	STACKED DOUBLE LOG-PER- ANTENNA	STPL9128 E	Schwarzbeck	9128ES-121	-
<input checked="" type="checkbox"/>	DOUBLE RIDGED HORN ANTENNA	SAS-571	A.H.SYSTEM,INC	781	03, 11, 2022

Test Conditions

Temperature: (22,9 ± 0,2) °C

Relative Humidity: (44,3 ± 0,3) % R.H.

Atmospheric Pressure: (100,3 ± 0,0) kPa

This report shall not be reproduced except in full, without the written approval of KES Co., Ltd.

The results shown in this test report refer only to the sample(s) tested unless otherwise stated.

The authenticity of the test report, contact kes@kes.co.kr



KES Co., Ltd.

3701, 40, Simin-daero 365beon-gil,
Dongan-gu, Anyang-si, Gyeonggi-do, 14057, Korea
Tel: +82-31-425-6200 / Fax: +82-31-424-0450
www.kes.co.kr

Report No.:

KES-EM-22T0159-R1

Page (27) of (70)

Test Specifications

Antenna Polarization: Horizontal & vertical unless indicated otherwise

Antenna Distance: ☒ 3 m

Field Strength: ☐ 1 V/m ☐ 3 V/m
☒ 10 V/m

Frequency Range: ☐ 80 MHz to 1 GHz ☐ 1,4 GHz to 2,7 GHz
☒ 80 MHz to 2,7 GHz

Modulation: ☒ AM, 80 %, 1 kHz sine wave
☒ PM, 1 Hz (0,5 s ON : 0,5 s OFF)

Frequency step: ☒ 1 % step

Dwell Time: ☐ 1 s ☒ 3 s

of Sides Radiated: ☒ 4

Required Performance Criteria: ☒ Complied

This report shall not be reproduced except in full, without the written approval of KES Co., Ltd.
The results shown in this test report refer only to the sample(s) tested unless otherwise stated.
The authenticity of the test report, contact kes@kes.co.kr

**KES Co., Ltd.**

3701, 40, Simin-daero 365beon-gil,
Dongan-gu, Anyang-si, Gyeonggi-do, 14057, Korea
Tel: +82-31-425-6200 / Fax: +82-31-424-0450
www.kes.co.kr

Report No.:

KES-EM-22T0159-R1

Page (28) of (70)

Test Data

Side Exposed	Observations	
	Horizontal	Vertical
Front	Complied	Complied
Right	Complied	Complied
Back	Complied	Complied
Left	Complied	Complied

Note: "Blank" = Not performed

Observations:

Complied – No degradation of function

Test Results

- ☒ PASS Required Performance Criteria
☐ NOT PASS Required Performance Criteria

RemarksPASS Required Performance Criteria

This report shall not be reproduced except in full, without the written approval of KES Co., Ltd.
The results shown in this test report refer only to the sample(s) tested unless otherwise stated.
The authenticity of the test report, contact kes@kes.co.kr

3.3 Electrical Fast Transients/Bursts

Reference Standard

EN 61000-4-4:2012

BS EN 61000-4-4:2012

Test Date

Jan. 17, 2022

Test Location

EMS-EFT: Electro wave Shieldroom #7

Test Equipment

Used	Description	Model Number	Manufacturer	Serial Number	Cal. Due
<input checked="" type="checkbox"/>	EMS Test S/W	iec.control	EM TEST	5.4.8	-
<input checked="" type="checkbox"/>	ULTRA COMPACT SIMULATOR	UCS 500N7	EM TEST	P1608172950	12, 03, 2022
<input checked="" type="checkbox"/>	MOTOR VARIAC	MV2616	EM TEST	P1552169719	04, 01, 2022
<input checked="" type="checkbox"/>	CAPACITIVE COUPLING CLAMP	HFK	EM TEST	P1633183115	12, 03, 2022

Test Conditions

Temperature: (23,3 ± 0,1) °C
Relative Humidity: (43,9 ± 0,2) % R.H.
Atmospheric Pressure: (100,3 ± 0,0) kPa

Test Specifications

Pulse Amplitude & Polarity: ☐ ± 1.0 kV ☒ ± 2.0 kV
(AC Power Lines) ☐ ± 4.0 kV

Pulse Amplitude & Polarity: ☐ ± 0.5 kV ☒ ± 1.0 kV
(Other supply / Signal Lines) ☐ ± 2.0 kV

Burst Period: ☒ 300 ms ☐ 2 s

Repetition Rate: ☐ 5 kHz ☒ 100 kHz

Duration of Test Voltage: ☒ ≥ 1 min

Required Performance Criteria: ☒ Complied

Test Data

☒ Input a.c. power ports – Coupling/Decoupling Network used

Mode of Application	Observations	
	(+) Burst (kV)	(-) Burst (kV)
L	Complied	Complied
N	Complied	Complied
PE	Complied	Complied
L – N	Complied	Complied
L – PE	Complied	Complied
N – PE	Complied	Complied
L – N – PE	Complied	Complied

☐ Input d.c. power ports – Coupling/Decoupling Network used

Mode of Application	Observations	
	(+) Burst (kV)	(-) Burst (kV)
-	-	-

☒ Signal ports and telecommunication ports – Coupling Clamp used

Mode of Application	Observations	
	(+) Burst (kV)	(-) Burst (kV)
RJ-45(LAN)	Complied	Complied

Note: “Blank” = Not performed

Observations:

Complied – No degradation of function

Test Results

- ☒ PASS Required Performance Criteria
☐ NOT PASS Required Performance Criteria

Remarks

PASS Required Performance Criteria

**KES Co., Ltd.**

3701, 40, Simin-daero 365beon-gil,
Dongan-gu, Anyang-si, Gyeonggi-do, 14057, Korea
Tel: +82-31-425-6200 / Fax: +82-31-424-0450
www.kes.co.kr

Report No.:

KES-EM-22T0159-R1

Page (31) of (70)

3.4 Surge Transients

Reference Standard

EN 61000-4-5:2014

BS EN 61000-4-5:2014

Test Date

Jan. 17, 2022

Test Location

EMS-EFT: Electro wave Shieldroom #7

Test Equipment

Used	Description	Model Number	Manufacturer	Serial Number	Cal. Due
<input checked="" type="checkbox"/>	EMS Test S/W	iec.control	EM TEST	5.4.8	-
<input checked="" type="checkbox"/>	ULTRA COMPACT SIMULATOR	UCS 500N7	EM TEST	P1608172950	12, 03, 2022
<input checked="" type="checkbox"/>	MOTOR VARIAC	MV2616	EM TEST	P1552169719	04, 01, 2022
<input checked="" type="checkbox"/>	CDN	CNV 508N1	EM TEST	P1610176296	12, 03, 2022

Test Conditions

Temperature: (23,3 ± 0,2) °C
Relative Humidity: (43,9 ± 0,3) % R.H.
Atmospheric Pressure: (100,3 ± 0,0) kPa

This report shall not be reproduced except in full, without the written approval of KES Co., Ltd.
The results shown in this test report refer only to the sample(s) tested unless otherwise stated.
The authenticity of the test report, contact kes@kes.co.kr



KES Co., Ltd.

3701, 40, Simin-daero 365beon-gil,
Dongan-gu, Anyang-si, Gyeonggi-do, 14057, Korea
Tel: +82-31-425-6200 / Fax: +82-31-424-0450
www.kes.co.kr

Report No.:

KES-EM-22T0159-R1

Page (32) of (70)

Test Specifications

AC Power Lines

Source Impedance: 12 ohm for common Mode and 2 ohm for differential Mode

Surge Amplitude :

Common Mode

☒ (0,5 / 1,0 / 2,0) kV

Differential Mode

☒ (0,5 / 1,0) kV

Number of Surges:

☒ 5 surges per angle

Angle:

☒ 0°, 90°, 180°, 270° (input a.c. power port)

Polarity:

☒ Positive & Negative

Repetition Rate:

☐ 1 surge per min ☒ 1 surge per 30 sec.

Required Performance Criteria: ☒ Complied

Other supply / Signal Lines

Source Impedance:

42 ohm for common Mode

Surge Amplitude:

Common Mode

☒ (0,5 / 1,0) kV

Number of Surges:

☒ 5 Surges

Polarity:

☒ Positive & Negative

Repetition Rate:

☒ 1 surge per min ☐ 1 surge per 30 sec.

Required Performance Criteria: ☒ Complied

Test Data

☒ Line to Line – Differential Mode

Mode of Application	Observations	
	(+) Surge (kV)	(-) Surge (kV)
L – N	Complied	Complied

☒ Line to Earth – Common Mode

Mode of Application	Observations	
	(+) Surge (kV)	(-) Surge (kV)
L – PE	Complied	Complied
N – PE	Complied	Complied

Signal Lines

☒ Line to Earth – Common Mode

Mode of Application	Coupling Method	Observations	
		(+) Surge (kV)	(-) Surge (kV)
RJ-45 (LAN)	CDN	Complied	Complied
	LINE	Complied	Complied

Note: "Blank" = Not performed

Observations:

Complied – No degradation of function

Test Results

- ☒ PASS Required Performance Criteria
☐ NOT PASS Required Performance Criteria
☐ NOT APPLICABLE

Remarks

PASS Required Performance Criteria

**KES Co., Ltd.**

3701, 40, Simin-daero 365beon-gil,
Dongan-gu, Anyang-si, Gyeonggi-do, 14057, Korea
Tel: +82-31-425-6200 / Fax: +82-31-424-0450
www.kes.co.kr

Report No.:

KES-EM-22T0159-R1

Page (34) of (70)

3.5 Conducted Disturbance

Reference Standard

EN 61000-4-6:2014

BS EN 61000-4-6:2014

Test Date

Jan. 14, 2022

Test Location

EMS-CS: Electro wave Shieldroom #6

Test Equipment

Used	Description	Model Number	Manufacturer	Serial Number	Cal. Due
<input checked="" type="checkbox"/>	EMS Test S/W	icd.control	EM TEST	5.3.12	-
<input checked="" type="checkbox"/>	CONTINUOUS WAVE SIMULATOR	CWS 500N1.4	EM TEST	P1602169880	11, 24, 2022
<input checked="" type="checkbox"/>	ATTENUATOR	ATT 6/80	EM TEST	P1614178148	11, 24, 2022
<input checked="" type="checkbox"/>	CDN	CDN M016	TESEQ	43694	11, 24, 2022
<input checked="" type="checkbox"/>	CDN	CDN M016	TESEQ	43697	11, 24, 2022
<input checked="" type="checkbox"/>	CDN	CDN T8RJ45	EM TEST	0909-09	08, 03, 2022
<input type="checkbox"/>	EM CLAMP	KEMZ 801A	TESEQ	44099	11, 25, 2022

Test Conditions

Temperature: (22,7 ± 0,3) °C

Relative Humidity: (43,6 ± 0,3) % R.H.

Atmospheric Pressure: (100,5 ± 0,0) kPa

This report shall not be reproduced except in full, without the written approval of KES Co., Ltd.

The results shown in this test report refer only to the sample(s) tested unless otherwise stated.

The authenticity of the test report, contact kes@kes.co.kr



KES Co., Ltd.

3701, 40, Simin-daero 365beon-gil,
Dongan-gu, Anyang-si, Gyeonggi-do, 14057, Korea
Tel: +82-31-425-6200 / Fax: +82-31-424-0450
www.kes.co.kr

Report No.:

KES-EM-22T0159-R1

Page (35) of (70)

Test Specifications

Frequency range:

☒ 150 kHz to 100 MHz

☐ 150 kHz to 80 MHz

Voltage Level:

☐ 1 Vrms

☐ 3 Vrms

☒ 10 Vrms

Modulation:

☒ AM, 80 %, 1 kHz sine wave

☒ PM, 1 Hz (0,5 s ON : 0,5 s OFF)

Frequency step:

☒ 1 % step

Dwell Time:

☐ 1 s

☒ 3 s

Required Performance Criteria: ☒ Complied

This report shall not be reproduced except in full, without the written approval of KES Co., Ltd.
The results shown in this test report refer only to the sample(s) tested unless otherwise stated.
The authenticity of the test report, contact kes@kes.co.kr

**KES Co., Ltd.**

3701, 40, Simin-daero 365beon-gil,
Dongan-gu, Anyang-si, Gyeonggi-do, 14057, Korea
Tel: +82-31-425-6200 / Fax: +82-31-424-0450
www.kes.co.kr

Report No.:

KES-EM-22T0159-R1

Page (36) of (70)

Test Data☒ Input a.c. power ports

Coupling Location (Line Stressed)	Coupling Method	Observations
L – N – PE	CDN	Complied

☐ Input d.c. power ports

Coupling Location (Line Stressed)	Coupling Method	Observations
-	-	-

☒ Signal ports and telecommunication ports

Coupling Location (Line Stressed)	Coupling Method	Observations
RJ-45(LAN)	CDN	Complied

Notes: CDN = Coupling Decoupling Network
"blank" = Not performed

Observations:

Complied – No degradation of function

Test Results☒ PASS Required Performance Criteria☐ NOT PASS Required Performance Criteria**Remarks**PASS Required Performance Criteria

This report shall not be reproduced except in full, without the written approval of KES Co., Ltd.
The results shown in this test report refer only to the sample(s) tested unless otherwise stated.
The authenticity of the test report, contact kes@kes.co.kr

**KES Co., Ltd.**

3701, 40, Simin-daero 365beon-gil,
Dongan-gu, Anyang-si, Gyeonggi-do, 14057, Korea
Tel: +82-31-425-6200 / Fax: +82-31-424-0450
www.kes.co.kr

Report No.:

KES-EM-22T0159-R1

Page (37) of (70)

3.6 Voltage Dips and Short Interruptions

Reference Standard

EN 61000-4-11:2004

BS EN 61000-4-11:2004

Test Date

Jan. 17, 2022

Test Location

EMS-Voltage dip: Electro wave Shieldroom #7

Test Equipment

Used	Description	Model Number	Manufacturer	Serial Number	Cal. Due
<input checked="" type="checkbox"/>	EMS Test S/W	iec.control	EM TEST	5.4.8	-
<input checked="" type="checkbox"/>	ULTRA COMPACT SIMULATOR	UCS 500N7	EM TEST	P1608172950	04, 01, 2022
<input checked="" type="checkbox"/>	MOTOR VARIAC	MV2616	EM TEST	P1552169719	04, 01, 2022

Test Conditions

Temperature: (23,3 ± 0,1) °C
Relative Humidity: (43,9 ± 0,1) % R.H.
Atmospheric Pressure: (100,3 ± 0,0) kPa

This report shall not be reproduced except in full, without the written approval of KES Co., Ltd.
The results shown in this test report refer only to the sample(s) tested unless otherwise stated.
The authenticity of the test report, contact kes@kes.co.kr

**KES Co., Ltd.**

3701, 40, Simin-daero 365beon-gil,
Dongan-gu, Anyang-si, Gyeonggi-do, 14057, Korea
Tel: +82-31-425-6200 / Fax: +82-31-424-0450
www.kes.co.kr

Report No.:
KES-EM-22T0159-R1
Page (38) of (70)

Test Specifications & Observations/Remarks**- Voltage Dips and Short Interruptions**

<u>Test Level</u>	<u>Duration [in period/ms (50 Hz)]</u>	<u>Results</u>
<input checked="" type="checkbox"/> 20 % dip	<input checked="" type="checkbox"/> 250 / 5 000	<u>Complied</u>
<input checked="" type="checkbox"/> 30 % dip	<input checked="" type="checkbox"/> 25 / 500	<u>Complied</u>
<input checked="" type="checkbox"/> 60 % dip	<input checked="" type="checkbox"/> 10 / 200	<u>Complied</u>
<input checked="" type="checkbox"/> 100 % dip	<input checked="" type="checkbox"/> 250 / 5 000	<u>Degradation</u>

- Voltage variations

<input checked="" type="checkbox"/> Unom + 10 %	<input checked="" type="checkbox"/> 253.0 V (ac)	<u>Complied</u>
<input checked="" type="checkbox"/> Unom - 15 %	<input checked="" type="checkbox"/> 195.5 V (ac)	<u>Complied</u>

Observations:

Complied – No degradation of function

Degradation - See "Remarks "

Test Results

- ☒ PASS Required Performance Criteria
☐ NOT PASS Required Performance Criteria
☐ NOT APPLICABLE

Remarks

During the test(100%, 250cycle), EUT was turned off but after the test, it was recovered by no operator's intervention.

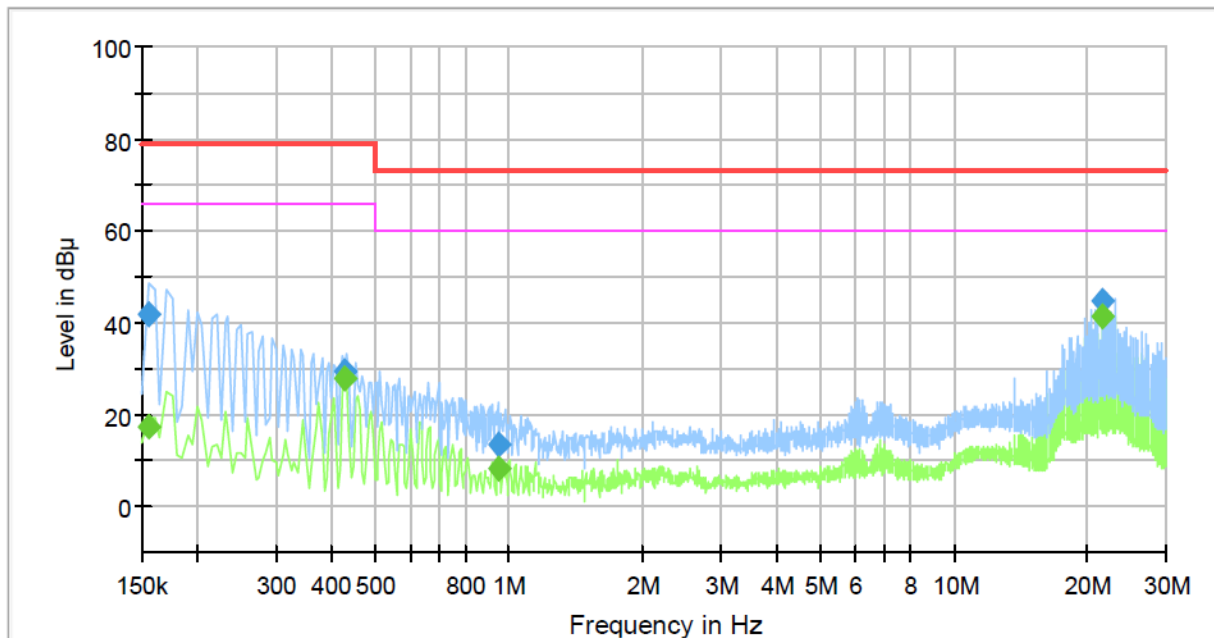
APPENDIX A – TEST DATA

Conducted Emissions at Mains Power Ports

[HOT]

Common Information

Test Description:	Conducted Emission
Model No.:	XNP-6400RW
Phase:	L1
Mode:	
Operator Name:	KES



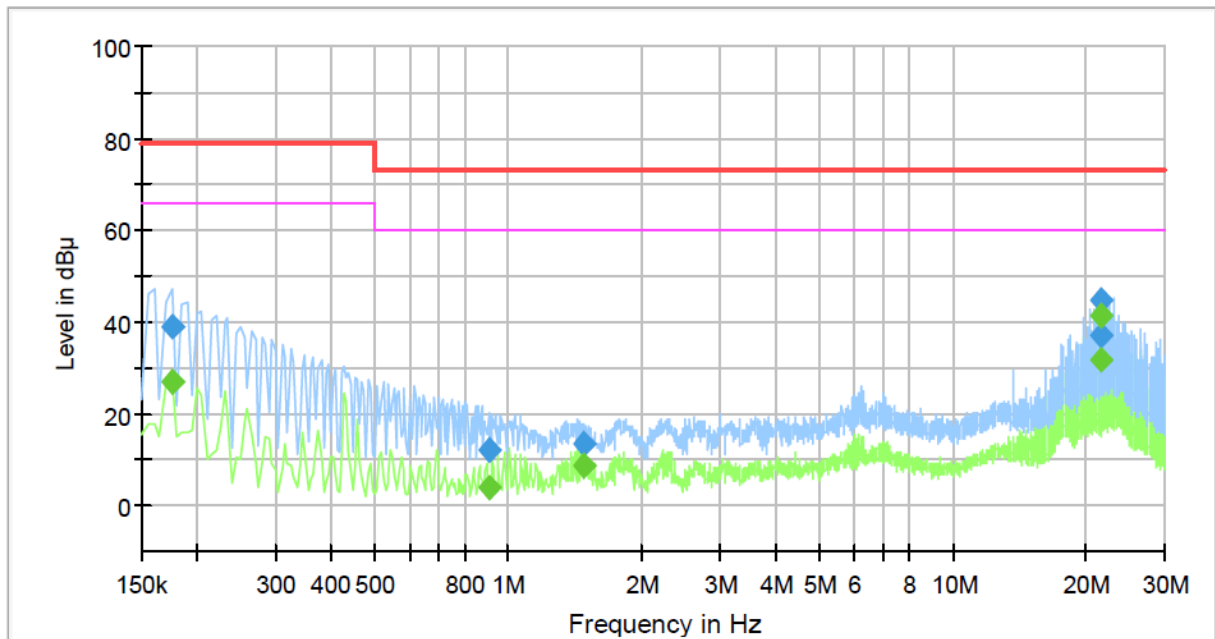
Final Result

Frequency (MHz)	QuasiPeak (dBμV)	CAverage (dBμV)	Limit (dBμV)	Margin (dB)	Meas. Time (ms)	Bandwidth (kHz)	Line	Corr. (dB)
0.155000	---	17.32	66.00	48.68	1000.0	9.000	L1	19.5
0.155000	42.08	---	79.00	36.92	1000.0	9.000	L1	19.5
0.430000	---	27.79	66.00	38.21	1000.0	9.000	L1	19.7
0.430000	29.38	---	79.00	49.62	1000.0	9.000	L1	19.7
0.945000	---	8.47	60.00	51.53	1000.0	9.000	L1	20.1
0.945000	13.45	---	73.00	59.55	1000.0	9.000	L1	20.1
21.665000	---	41.37	60.00	18.63	1000.0	9.000	L1	20.2
21.665000	44.59	---	73.00	28.41	1000.0	9.000	L1	20.2

[NEUTRAL]

Common Information

Test Description: Conducted Emission
Model No.: XNP-6400RW
Phase: N
Mode:
Operator Name: KES



Final Result

Frequency (MHz)	QuasiPeak (dBμV)	CAverage (dBμV)	Limit (dBμV)	Margin (dB)	Meas. Time (ms)	Bandwidth (kHz)	Line	Corr. (dB)
0.175000	---	27.20	66.00	38.80	1000.0	9.000	N	19.5
0.175000	39.17	---	79.00	39.83	1000.0	9.000	N	19.5
0.905000	---	3.76	60.00	56.24	1000.0	9.000	N	20.1
0.905000	12.16	---	73.00	60.84	1000.0	9.000	N	20.1
1.475000	---	8.95	60.00	51.05	1000.0	9.000	N	20.2
1.475000	13.50	---	73.00	59.50	1000.0	9.000	N	20.2
21.510000	---	31.67	60.00	28.33	1000.0	9.000	N	20.2
21.510000	37.05	---	73.00	35.95	1000.0	9.000	N	20.2
21.665000	---	41.41	60.00	18.59	1000.0	9.000	N	20.2
21.665000	44.70	---	73.00	28.30	1000.0	9.000	N	20.2

◆ Calculation

QuasiPeak[dBuV] / CAverage [dBuV] = Reading Value[dBuV] + Corr. [dB]

QuasiPeak / CAverage : The Final Value

Reading Value : Not shown in the table.

Corr. : Correction values (LISN FACTOR + (Cable Loss + Pulse Limiter FACTOR))

This report shall not be reproduced except in full, without the written approval of KES Co., Ltd.

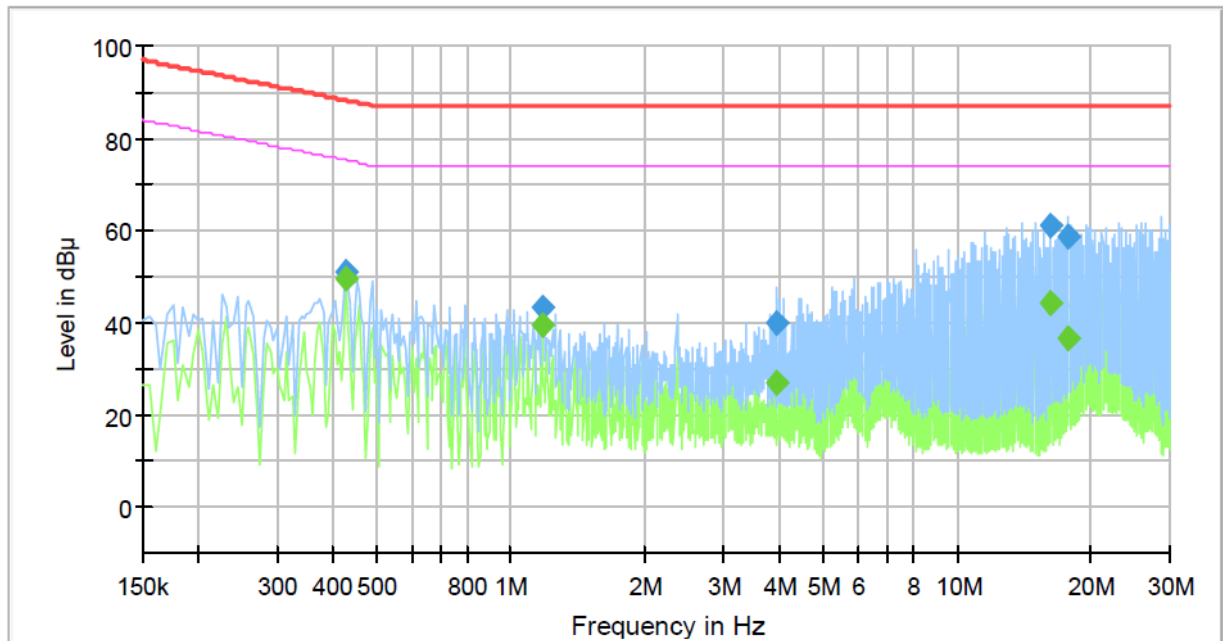
The results shown in this test report refer only to the sample(s) tested unless otherwise stated.

The authenticity of the test report, contact kes@kes.co.kr

Conducted Emissions at Telecommunication Ports [100 Mbps]

Common Information

Test Description:	Telecommunication Emission
Model No.:	XNP-6400RW
Mode :	
Speed :	100 Mbps
Operator Name:	KES



Final Result

Frequency (MHz)	QuasiPeak (dBμV)	CAverage (dBμV)	Limit (dBμV)	Margin (dB)	Meas. Time (ms)	Bandwidth (kHz)	Line	Corr. (dB)
0.430000	---	49.52	75.25	25.73	1000.0	9.000	Single Line	19.8
0.430000	50.85	---	88.25	37.40	1000.0	9.000	Single Line	19.8
1.180000	---	39.48	74.00	34.52	1000.0	9.000	Single Line	20.0
1.180000	43.27	---	87.00	43.73	1000.0	9.000	Single Line	20.0
3.955000	---	26.98	74.00	47.02	1000.0	9.000	Single Line	19.7
3.955000	40.03	---	87.00	46.97	1000.0	9.000	Single Line	19.7
16.230000	---	44.06	74.00	29.94	1000.0	9.000	Single Line	19.7
16.230000	60.89	---	87.00	26.11	1000.0	9.000	Single Line	19.7
17.830000	---	36.77	74.00	37.23	1000.0	9.000	Single Line	19.8
17.830000	58.57	---	87.00	28.43	1000.0	9.000	Single Line	19.8

◆ Calculation

QuasiPeak[dBuV] / CAverage [dBuV] = Reading Value[dBuV] + Corr. [dB]

QuasiPeak / CAverage : The Final Value

Reading Value : Not shown in the table.

Corr. : Correction values (ISN FACTOR + (Cable Loss + Pulse Limiter FACTOR))

This report shall not be reproduced except in full, without the written approval of KES Co., Ltd.

The results shown in this test report refer only to the sample(s) tested unless otherwise stated.

The authenticity of the test report, contact kes@kes.co.kr



KES Co., Ltd.

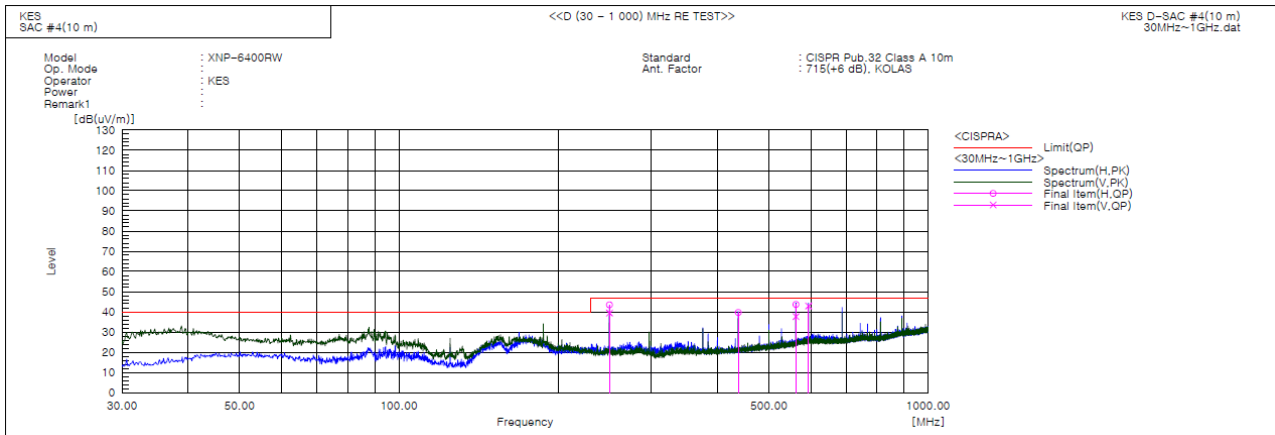
3701, 40, Simin-daero 365beon-gil,
Dongan-gu, Anyang-si, Gyeonggi-do, 14057, Korea
Tel: +82-31-425-6200 / Fax: +82-31-424-0450
www.kes.co.kr

Report No.:

KES-EM-22T0159-R1

Page (42) of (70)

Radiated Electric Field Emissions(Below 1 GHz)



Final Result

No.	Frequency [MHz]	(P)	Reading QP [dB(uV)]	c.f [dB(1/m)]	Result QP [dB(uV/m)]	Limit QP [dB(uV/m)]	Margin QP [dB]	Height [cm]	Angle [deg]	Remark
1	249.941	V	58.5	-19.1	39.4	47.0	7.6	112.0	223.0	
2	249.948	H	62.6	-19.1	43.5	47.0	3.5	389.0	167.0	
3	437.521	H	52.9	-13.2	39.7	47.0	7.3	233.0	334.0	
4	562.530	V	47.3	-9.6	37.7	47.0	9.3	100.0	13.0	
5	562.537	H	53.3	-9.6	43.7	47.0	3.3	378.0	30.0	
6	594.055	V	51.3	-8.4	42.9	47.0	4.1	400.0	186.0	

◆ Calculation – SEMI ANECHOIC CHAMBER #4(10 m)

Result(QP) [dB(μV/m)] = (Reading(QP)[dB(μV)] + c.f[dB(1/m)]

Margin(QP)[dB] = Limit[dB(μV/m)] - Result(QP) [dB(μV/m)]

Reading(QP) : Reading value, Result(QP) : Reading value + Factor value

Limit(QP) : Limit value, c.f : (ANT Factor + Cable Loss - Preamp Factor), Margin: Margin value

This report shall not be reproduced except in full, without the written approval of KES Co., Ltd.

The results shown in this test report refer only to the sample(s) tested unless otherwise stated.

The authenticity of the test report, contact kes@kes.co.kr



KES Co., Ltd.

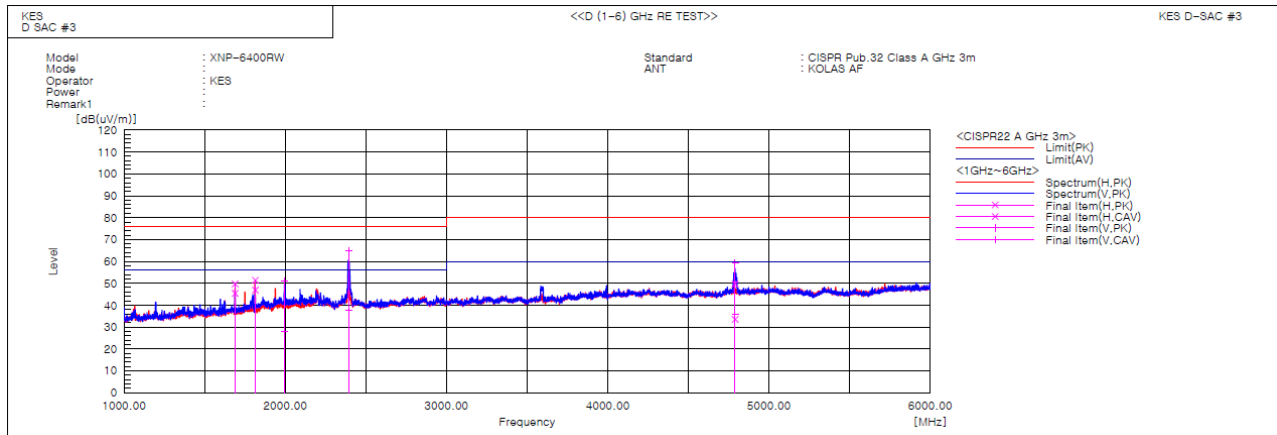
3701, 40, Simin-daero 365beon-gil,
Dongan-gu, Anyang-si, Gyeonggi-do, 14057, Korea
Tel: +82-31-425-6200 / Fax: +82-31-424-0450
www.kes.co.kr

Report No.:

KES-EM-22T0159-R1

Page (43) of (70)

Radiated Electric Field Emissions(Above 1 GHz)



Final Result

No.	Frequency [MHz]	(P)	Reading PK [dB(μV)]	Reading CAV [dB(μV)]	c.f [dB(1/m)]	Result PK [dB(μV/m)]	Result CAV [dB(μV/m)]	Limit PK [dB(μV/m)]	Limit AV [dB(μV/m)]	Margin PK [dB]	Margin CAV [dB]	Height [cm]	Angle [deg]	Remark
1	1688.512	H	54.1	49.8	-4.4	49.7	45.4	76.0	56.0	26.3	10.6	100.0	19.3	
2	1813.332	H	54.3	49.8	-2.9	51.4	46.9	76.0	56.0	24.6	9.1	100.0	35.1	
3	1996.001	V	52.1	28.8	-1.0	51.1	27.8	76.0	56.0	24.9	28.2	100.0	95.5	
4	2392.004	V	64.6	37.5	0.2	64.8	37.7	76.0	56.0	11.2	18.3	100.0	170.0	
5	4790.000	V	51.4	27.9	7.9	59.3	35.8	80.0	60.0	20.7	24.2	100.0	170.0	
6	4790.026	H	41.8	25.6	7.9	49.7	33.5	80.0	60.0	30.3	26.5	100.0	285.8	

◆ Calculation

Result(PK/CAV) [dB(μV/m)] = (Reading(PK/CAV)[dB(μV)] + c.f[dB(1/m)])

Margin(PK/CAV)[dB] = Limit[dB(μV/m)] - Result(PK/CAV) [dB(μV/m)]

Reading(PK/CAV) : Reading value, Result(PK/CAV) : Reading value + Factor value

Limit(QP) : Limit value, c.f : (ANT Factor + Cable Loss - Preamp Factor), Margin: Margin value

This report shall not be reproduced except in full, without the written approval of KES Co., Ltd.

The results shown in this test report refer only to the sample(s) tested unless otherwise stated.

The authenticity of the test report, contact kes@kes.co.kr



Harmonic Current Emissions and Voltage Fluctuations and Flicker

Average harmonic current results

Hn	I _{eff} [A]	% of Limit	Limit [A]	Result
1	0.081			
2	0.003	0.242	1.080	n/a
3	0.071	3.087	2.300	PASS
4	0.004	0.938	0.430	n/a
5	0.068	5.997	1.140	PASS
6	0.003	1.087	0.300	n/a
7	0.065	8.460	0.770	PASS
8	0.003	1.237	0.230	n/a
9	0.061	15.140	0.400	PASS
10	0.004	1.991	0.184	n/a
11	0.055	16.760	0.330	PASS
12	0.003	2.050	0.153	n/a
13	0.050	23.737	0.210	PASS
14	0.002	1.612	0.131	n/a
15	0.044	29.317	0.150	PASS
16	0.002	1.547	0.115	n/a
17	0.038	28.462	0.132	PASS
18	0.002	1.720	0.102	n/a
19	0.031	26.274	0.118	PASS
20	0.001	1.517	0.092	n/a
21	0.025	15.431	0.161	PASS
22	0.001	1.199	0.084	n/a
23	0.019	13.162	0.147	PASS
24	0.001	1.153	0.077	n/a
25	0.014	10.573	0.135	PASS
26	0.001	0.979	0.071	n/a
27	0.010	7.783	0.125	PASS
28	0.001	1.053	0.066	n/a
29	0.006	5.216	0.116	PASS
30	0.001	1.187	0.061	n/a
31	0.003	2.961	0.109	n/a
32	0.001	1.241	0.058	n/a
33	0.001	1.459	0.102	n/a
34	0.001	1.320	0.054	n/a
35	0.002	2.094	0.096	n/a
36	0.001	1.342	0.051	n/a
37	0.003	3.194	0.091	n/a
38	0.001	1.427	0.048	n/a
39	0.003	3.840	0.087	n/a
40	0.001	1.402	0.046	n/a

Note: Harmonic currents less than 0.6 % of the input current measured under the test conditions, or less than 5 mA, whichever is greater, are disregarded.

* Application of limits for average is 100% except for odd harmonics from 21 to 39, where 150% applies.



Test Data - Harmonics (continued)

Maximum harmonic current results				
Hn	I _{eff} [A]	% of Limit	Limit [A]	Result
1	0.081			
2	0.003	0.200	1.620	n/a
3	0.071	2.062	3.450	PASS
4	0.005	0.700	0.645	n/a
5	0.069	4.009	1.710	PASS
6	0.004	0.823	0.450	n/a
7	0.065	5.653	1.155	PASS
8	0.003	0.949	0.345	n/a
9	0.061	10.113	0.600	PASS
10	0.004	1.503	0.276	n/a
11	0.056	11.260	0.495	PASS
12	0.004	1.547	0.230	n/a
13	0.050	15.854	0.315	PASS
14	0.002	1.260	0.197	n/a
15	0.044	19.623	0.225	PASS
16	0.002	1.243	0.173	n/a
17	0.038	19.029	0.199	PASS
18	0.002	1.345	0.153	n/a
19	0.031	17.655	0.178	PASS
20	0.002	1.195	0.138	n/a
21	0.025	15.518	0.161	PASS
22	0.001	0.946	0.125	n/a
23	0.020	13.318	0.147	PASS
24	0.001	0.914	0.115	n/a
25	0.014	10.699	0.135	PASS
26	0.001	0.762	0.106	n/a
27	0.010	7.864	0.125	PASS
28	0.001	0.784	0.099	n/a
29	0.006	5.296	0.116	PASS
30	0.001	0.880	0.092	n/a
31	0.003	3.093	0.109	n/a
32	0.001	0.910	0.086	n/a
33	0.002	1.549	0.102	n/a
34	0.001	1.007	0.081	n/a
35	0.002	2.341	0.096	n/a
36	0.001	1.009	0.077	n/a
37	0.003	3.548	0.091	n/a
38	0.001	1.055	0.073	n/a
39	0.003	3.969	0.087	n/a
40	0.001	1.047	0.069	n/a

Note: Harmonic currents less than 0.6 % of the input current measured under the test conditions, or less than 5 mA, whichever is greater, are disregarded.

* Application of limits for average is 100% except for odd harmonics from 21 to 39, where 150% applies.

**KES Co., Ltd.**

3701, 40, Simin-daero 365beon-gil,
Dongan-gu, Anyang-si, Gyeonggi-do, 14057, Korea
Tel: +82-31-425-6200 / Fax: +82-31-424-0450
www.kes.co.kr

Report No.:

KES-EM-22T0159-R1

Page (46) of (70)

Test Data - Voltage Fluctuations

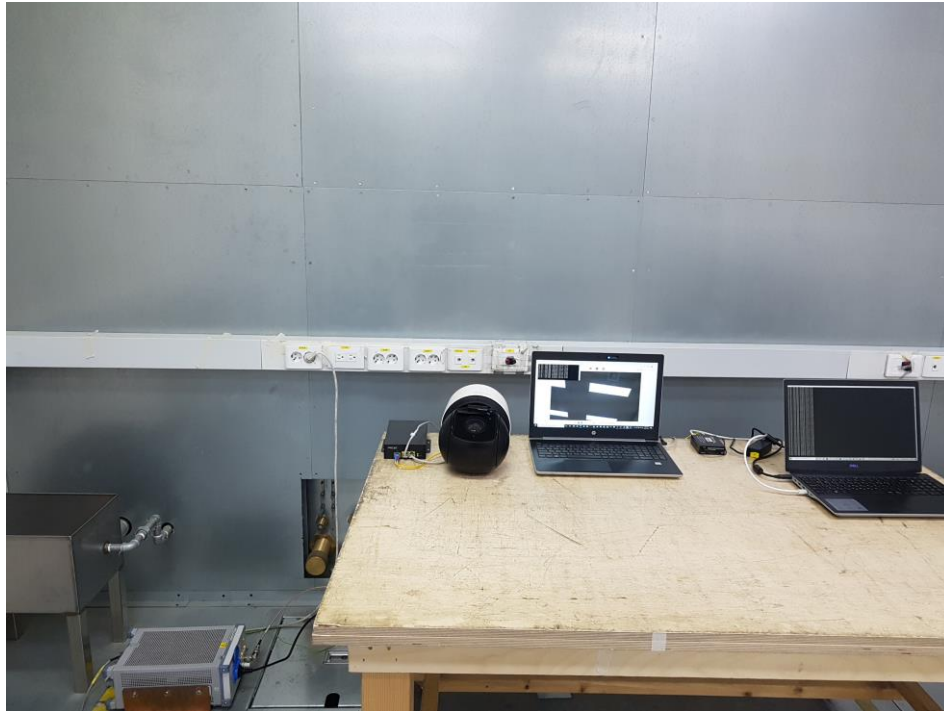
Maximum Flicker results

Flicker Measurements					
	Plt	Max Pst	Max Dc	Max Dmax	Max Tmax
Line 1:	0.028	0.028	0	< 0.2	0
Limits:	0.65	1	3.3	4	0.5
Results:	PASS	PASS	PASS	PASS	PASS

This report shall not be reproduced except in full, without the written approval of KES Co., Ltd.
The results shown in this test report refer only to the sample(s) tested unless otherwise stated.
The authenticity of the test report, contact kes@kes.co.kr

Test Setup Photos and Configuration

Conducted Emissions at Mains Power Ports



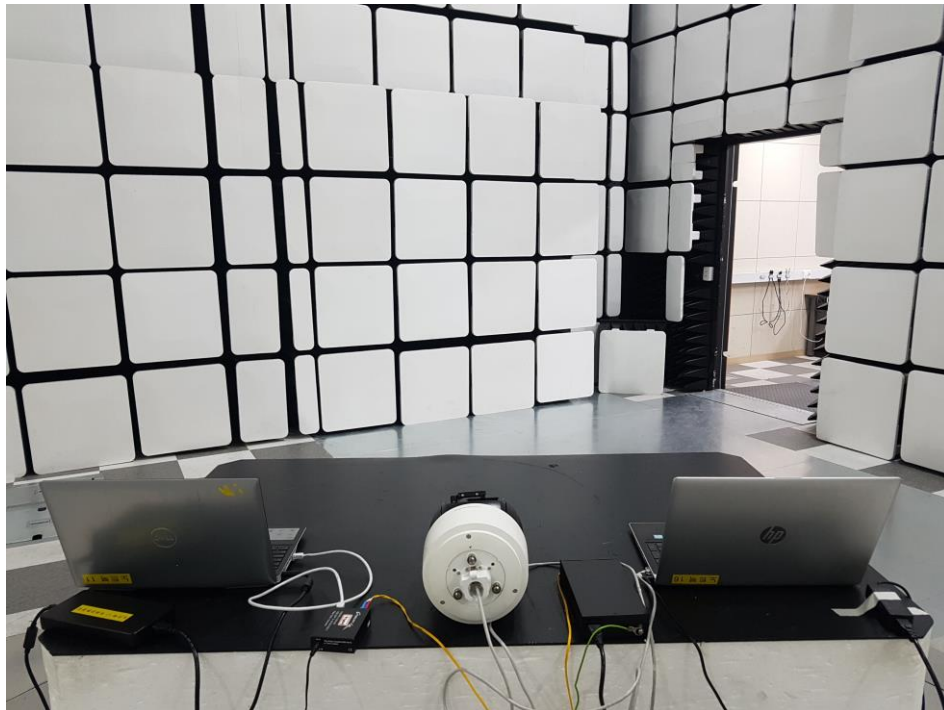
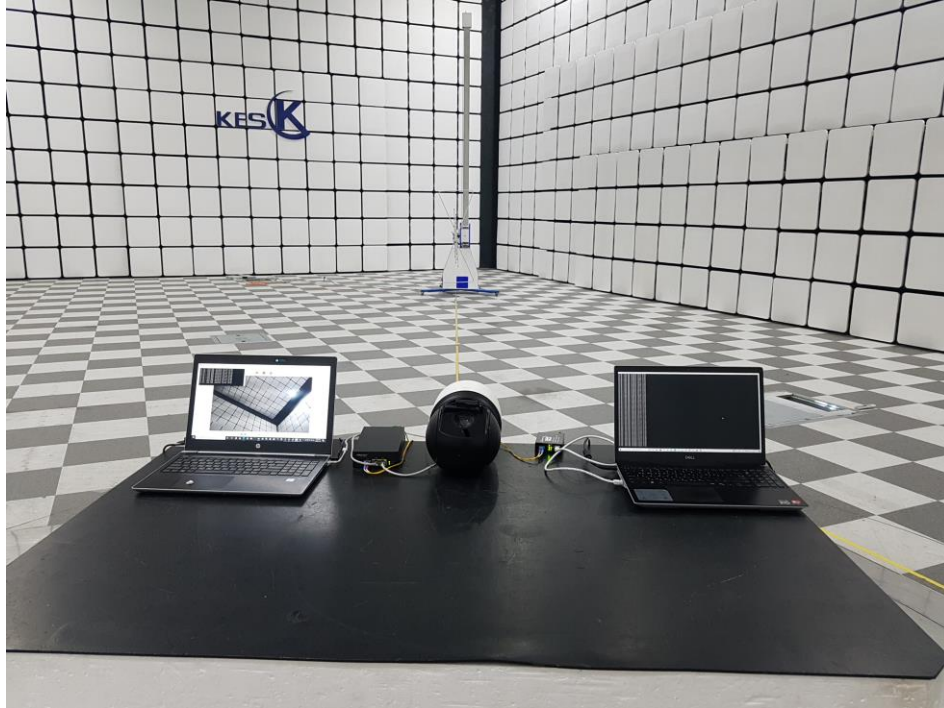
This report shall not be reproduced except in full, without the written approval of KES Co., Ltd.
The results shown in this test report refer only to the sample(s) tested unless otherwise stated.
The authenticity of the test report, contact kes@kes.co.kr

Conducted Emissions at Telecommunication Ports



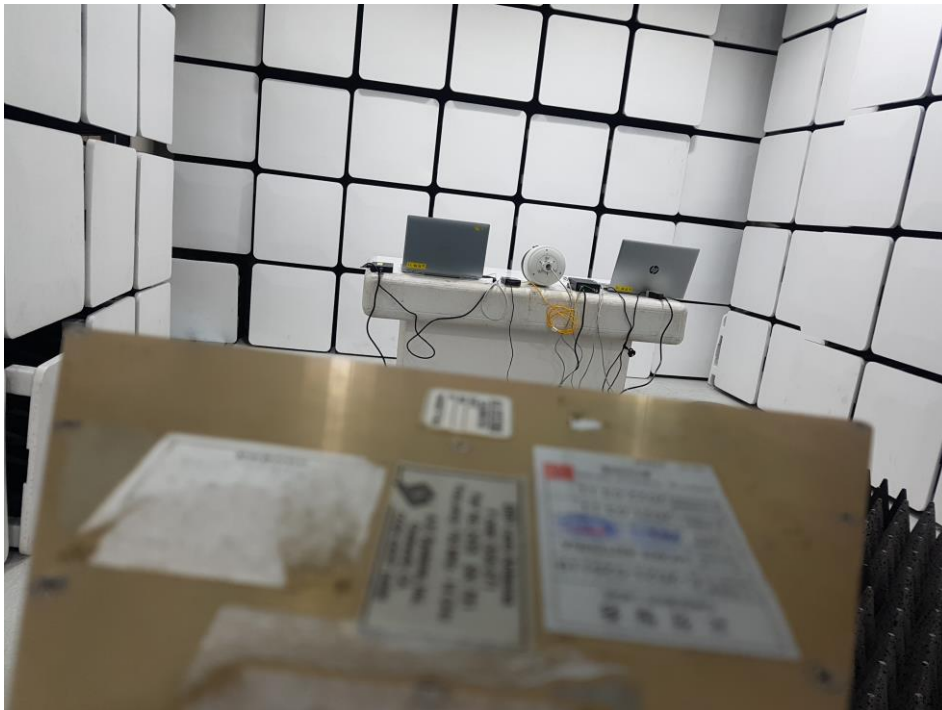
This report shall not be reproduced except in full, without the written approval of KES Co., Ltd.
The results shown in this test report refer only to the sample(s) tested unless otherwise stated.
The authenticity of the test report, contact kes@kes.co.kr

Radiated Electric Field Emissions(Below 1 GHz)



This report shall not be reproduced except in full, without the written approval of KES Co., Ltd.
The results shown in this test report refer only to the sample(s) tested unless otherwise stated.
The authenticity of the test report, contact kes@kes.co.kr

Radiated Electric Field Emissions(Above 1 GHz)



This report shall not be reproduced except in full, without the written approval of KES Co., Ltd.
The results shown in this test report refer only to the sample(s) tested unless otherwise stated.
The authenticity of the test report, contact kes@kes.co.kr

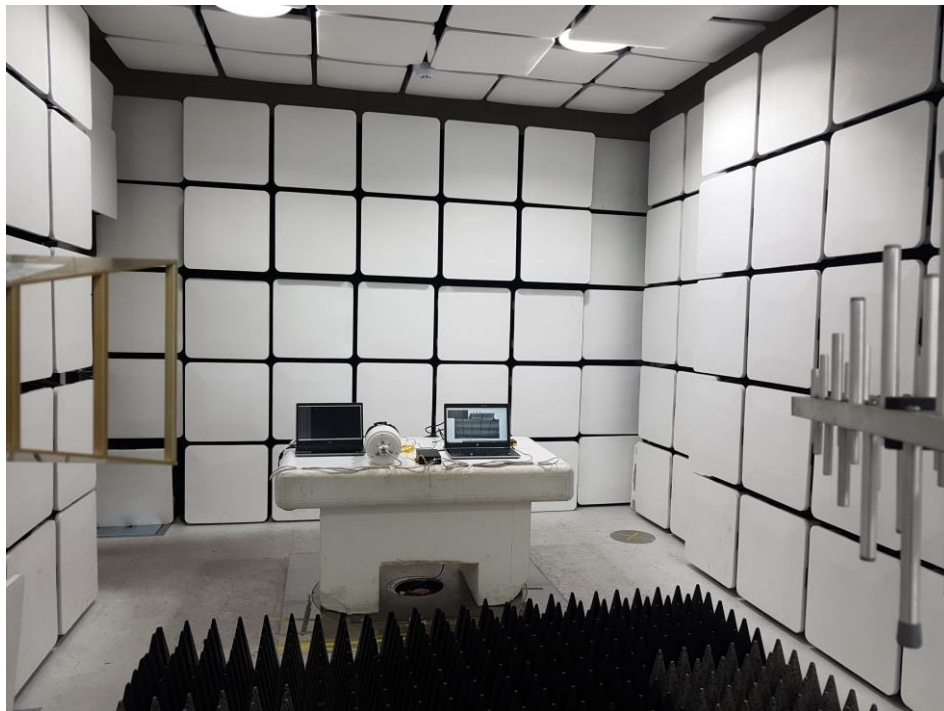
Harmonic Current Emissions and Voltage Fluctuations and Flicker



Electrostatic Discharge



Radiated Electric Field Immunity



This report shall not be reproduced except in full, without the written approval of KES Co., Ltd.
The results shown in this test report refer only to the sample(s) tested unless otherwise stated.
The authenticity of the test report, contact kes@kes.co.kr

Electrical Fast Transients/Bursts



Surge Transients

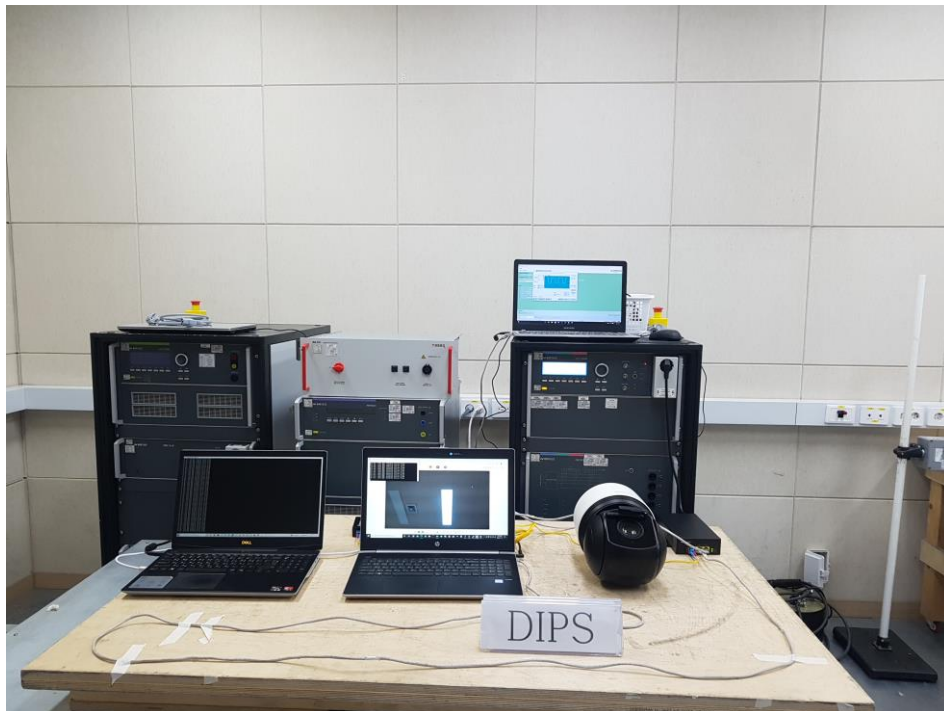


This report shall not be reproduced except in full, without the written approval of KES Co., Ltd.
The results shown in this test report refer only to the sample(s) tested unless otherwise stated.
The authenticity of the test report, contact kes@kes.co.kr

Conducted Disturbance



Voltage Dips and Short Interruptions



This report shall not be reproduced except in full, without the written approval of KES Co., Ltd.
The results shown in this test report refer only to the sample(s) tested unless otherwise stated.
The authenticity of the test report, contact kes@kes.co.kr

EUT External Photographs

(Top)



(Bottom)



This report shall not be reproduced except in full, without the written approval of KES Co., Ltd.
The results shown in this test report refer only to the sample(s) tested unless otherwise stated.
The authenticity of the test report, contact kes@kes.co.kr

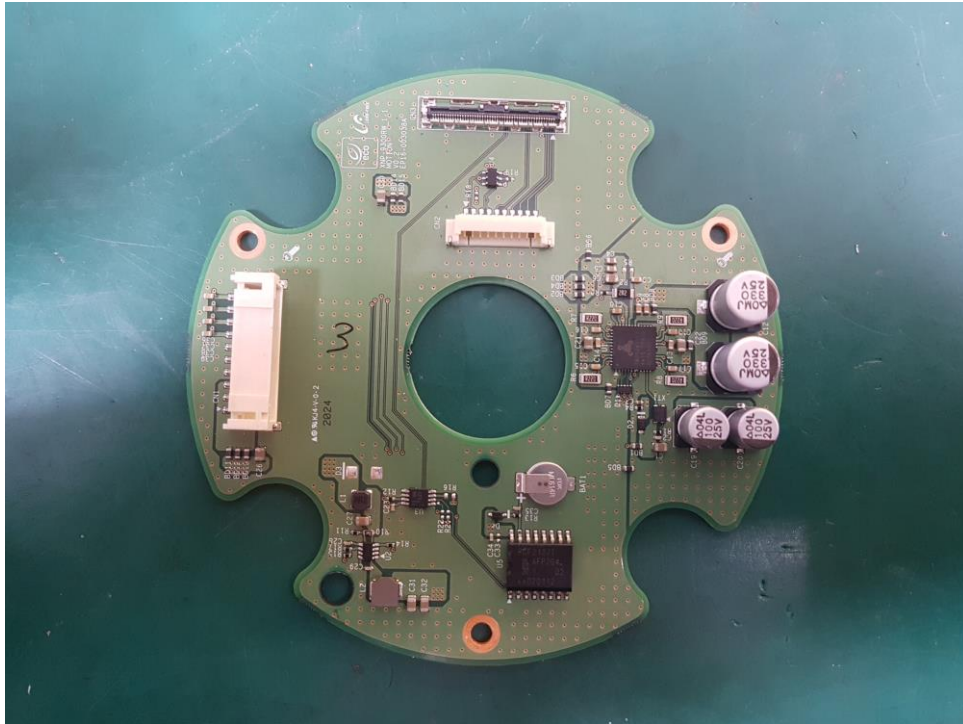
EUT Internal Photographs

(Internal View)

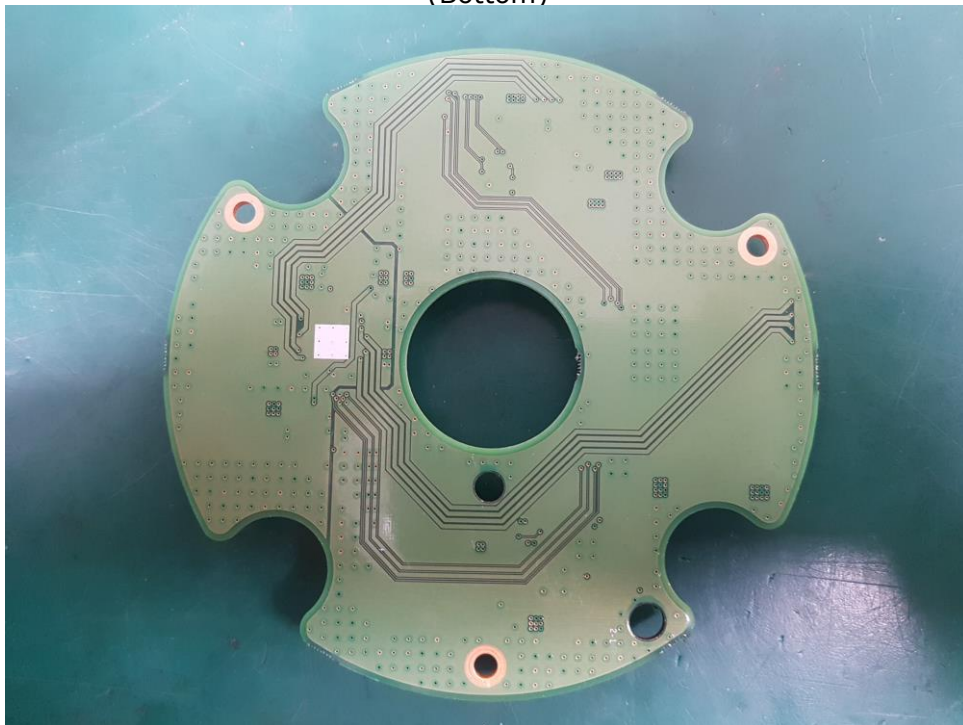


EUT Internal View – Board 1

(Top)



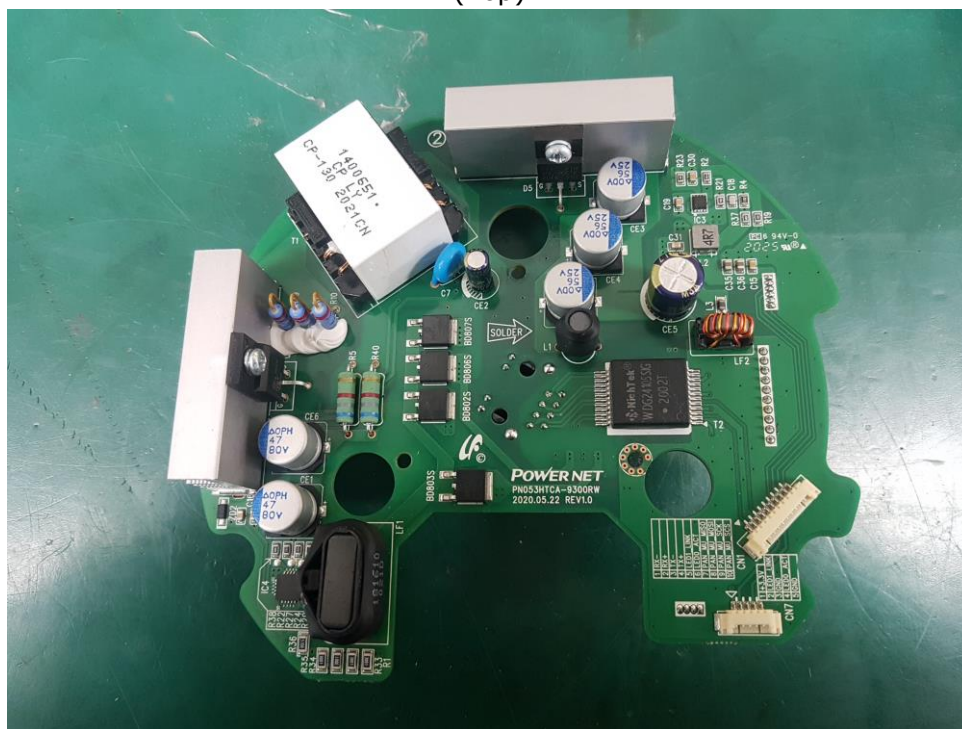
(Bottom)



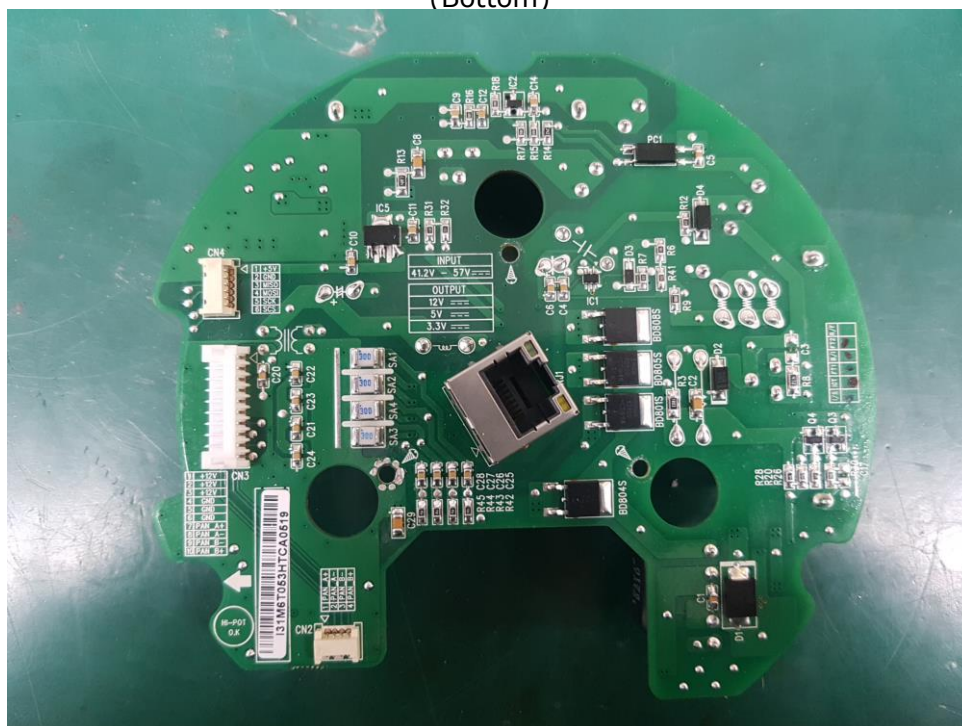
This report shall not be reproduced except in full, without the written approval of KES Co., Ltd.
The results shown in this test report refer only to the sample(s) tested unless otherwise stated.
The authenticity of the test report, contact kes@kes.co.kr

EUT Internal View – Board 2

(Top)



(Bottom)



This report shall not be reproduced except in full, without the written approval of KES Co., Ltd.
The results shown in this test report refer only to the sample(s) tested unless otherwise stated.
The authenticity of the test report, contact kes@kes.co.kr

EUT Internal View – Board 3

(Top)



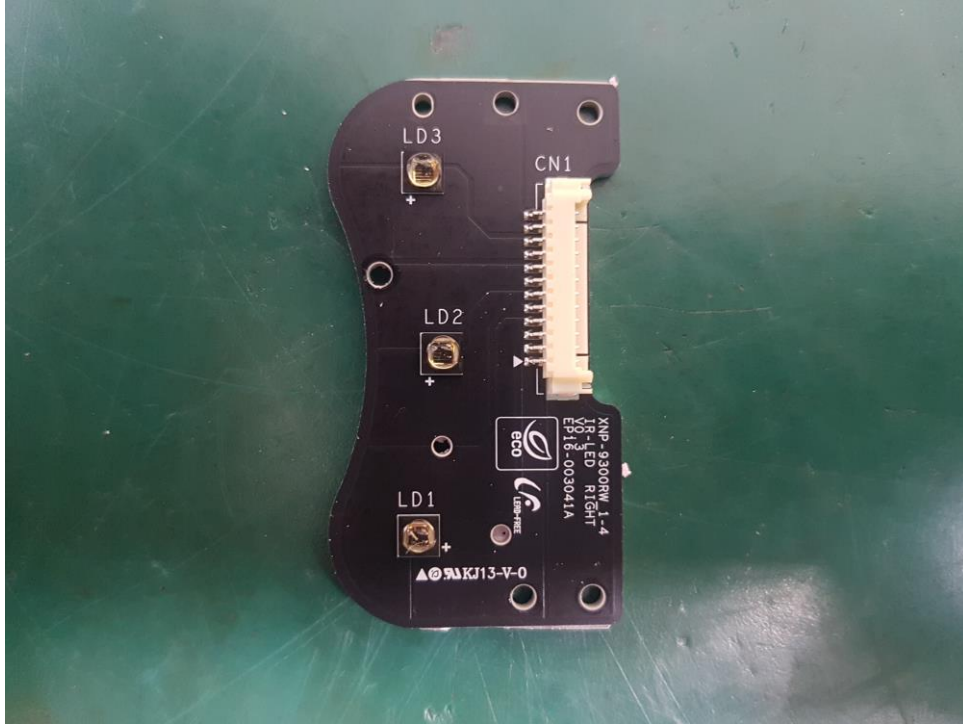
(Bottom)



This report shall not be reproduced except in full, without the written approval of KES Co., Ltd.
The results shown in this test report refer only to the sample(s) tested unless otherwise stated.
The authenticity of the test report, contact kes@kes.co.kr

EUT Internal View – Board 4

(Top)



(Bottom)



This report shall not be reproduced except in full, without the written approval of KES Co., Ltd.
The results shown in this test report refer only to the sample(s) tested unless otherwise stated.
The authenticity of the test report, contact kes@kes.co.kr

EUT Internal View – Board 5

(Top)



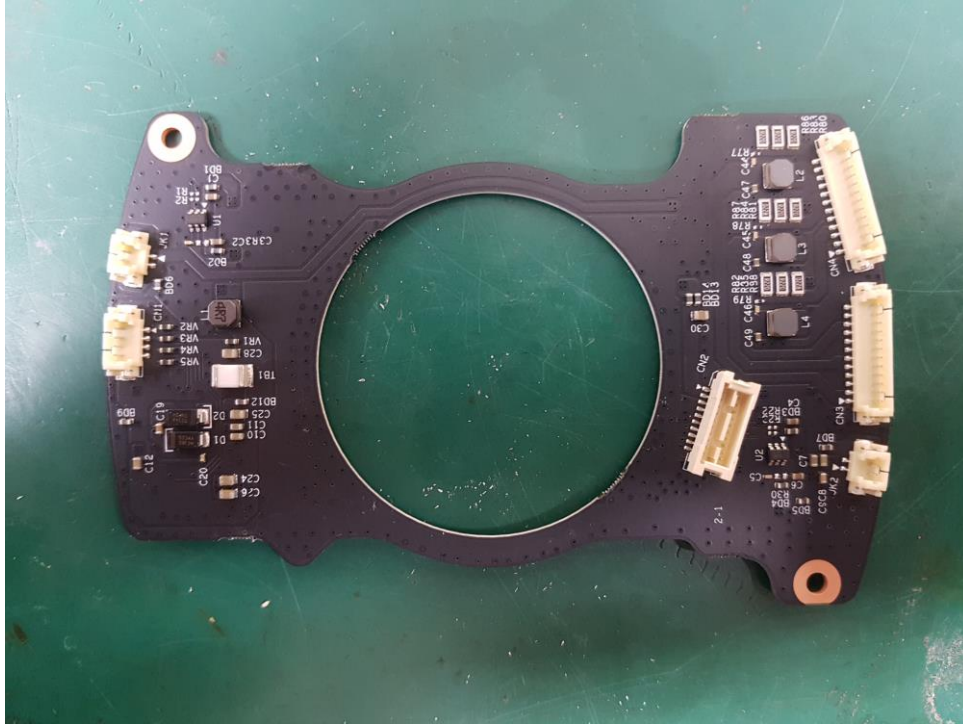
(Bottom)



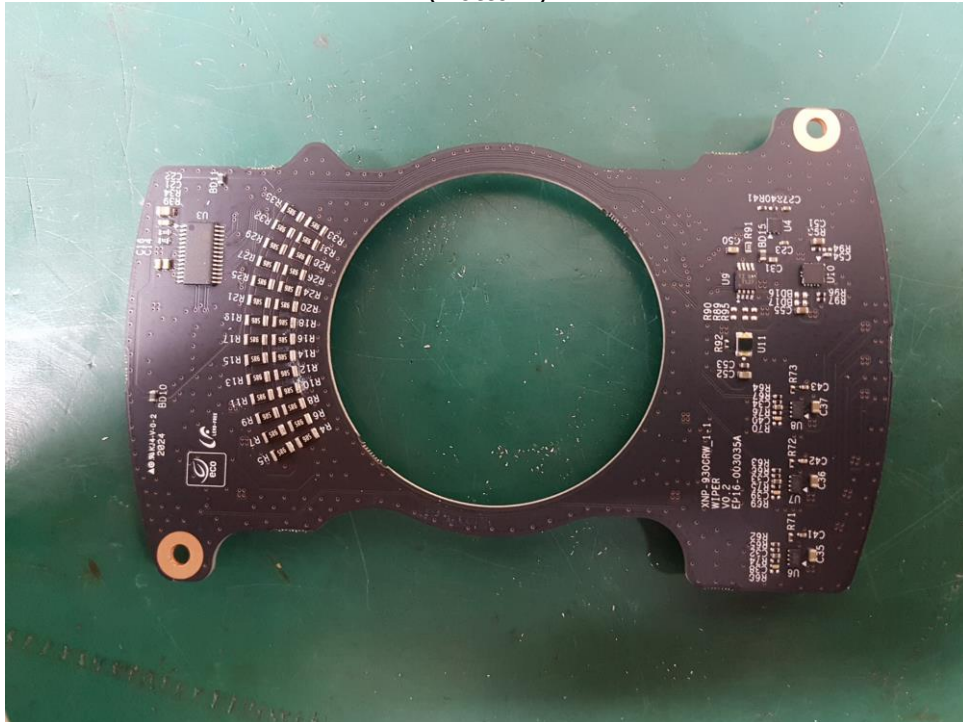
This report shall not be reproduced except in full, without the written approval of KES Co., Ltd.
The results shown in this test report refer only to the sample(s) tested unless otherwise stated.
The authenticity of the test report, contact kes@kes.co.kr

EUT Internal View – Board 6

(Top)



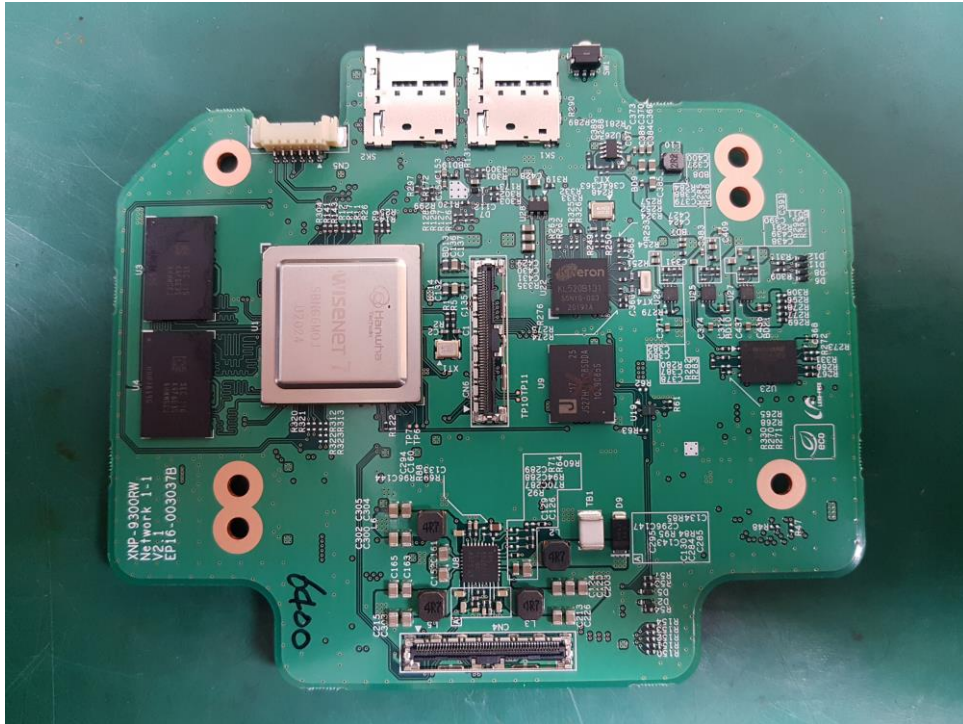
(Bottom)



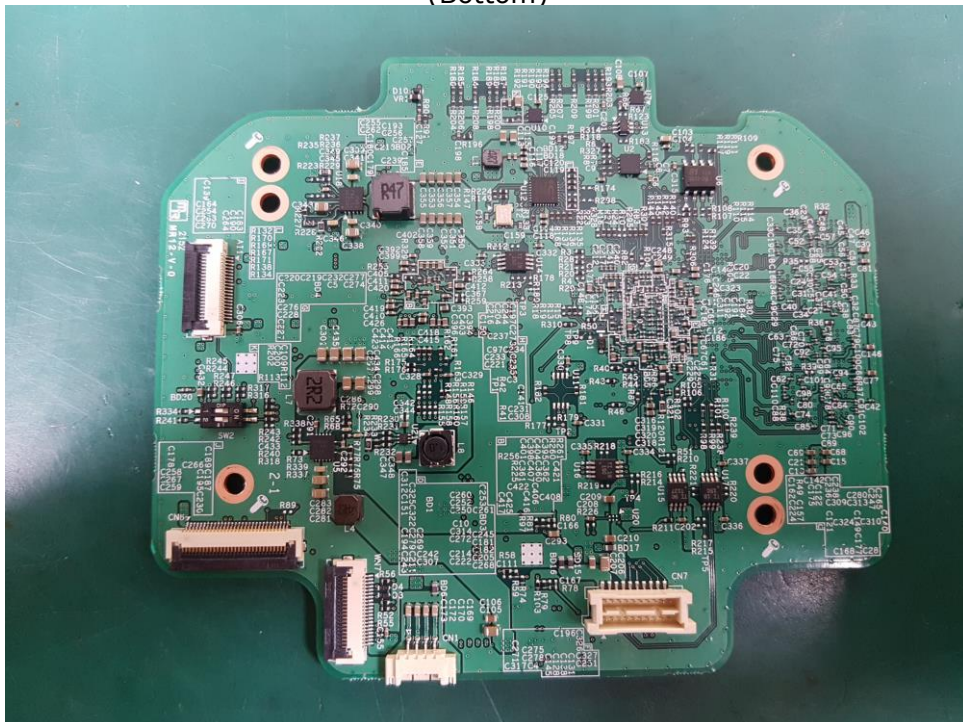
This report shall not be reproduced except in full, without the written approval of KES Co., Ltd.
The results shown in this test report refer only to the sample(s) tested unless otherwise stated.
The authenticity of the test report, contact kes@kes.co.kr

EUT Internal View – Board 7

(Top)



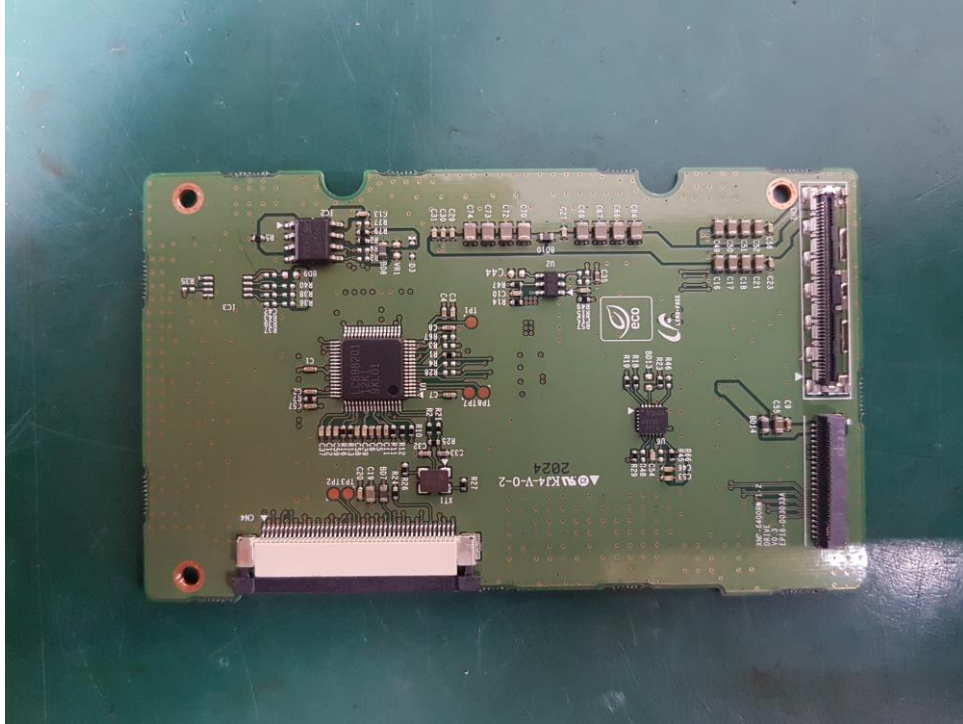
(Bottom)



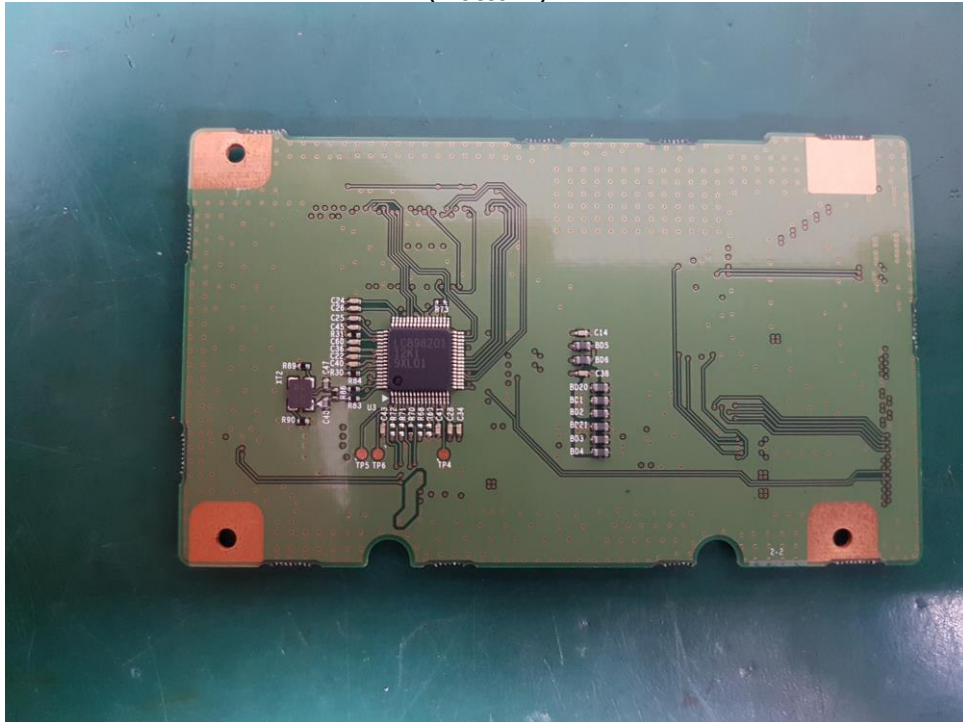
This report shall not be reproduced except in full, without the written approval of KES Co., Ltd.
The results shown in this test report refer only to the sample(s) tested unless otherwise stated.
The authenticity of the test report, contact kes@kes.co.kr

EUT Internal View – Board 8

(Top)



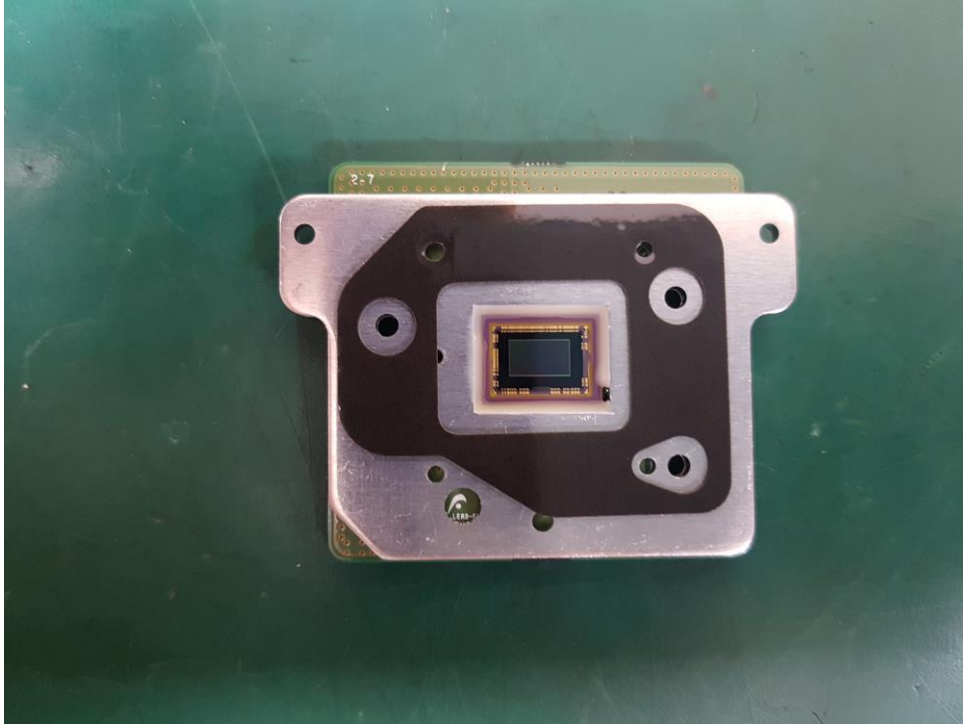
(Bottom)



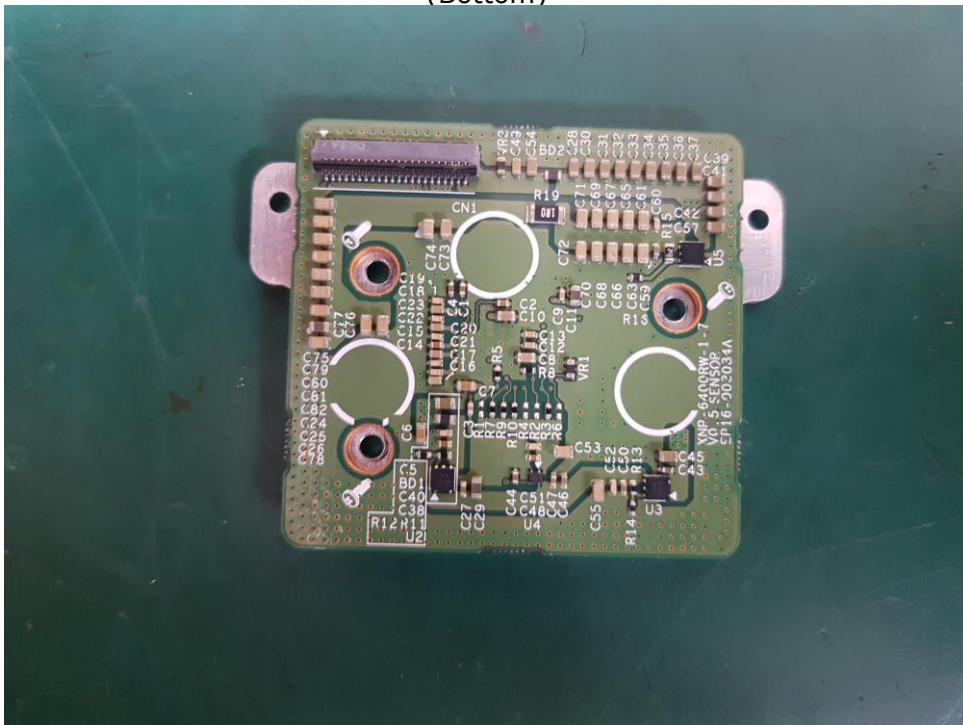
This report shall not be reproduced except in full, without the written approval of KES Co., Ltd.
The results shown in this test report refer only to the sample(s) tested unless otherwise stated.
The authenticity of the test report, contact kes@kes.co.kr

EUT Internal View – Board 9

(Top)



(Bottom)



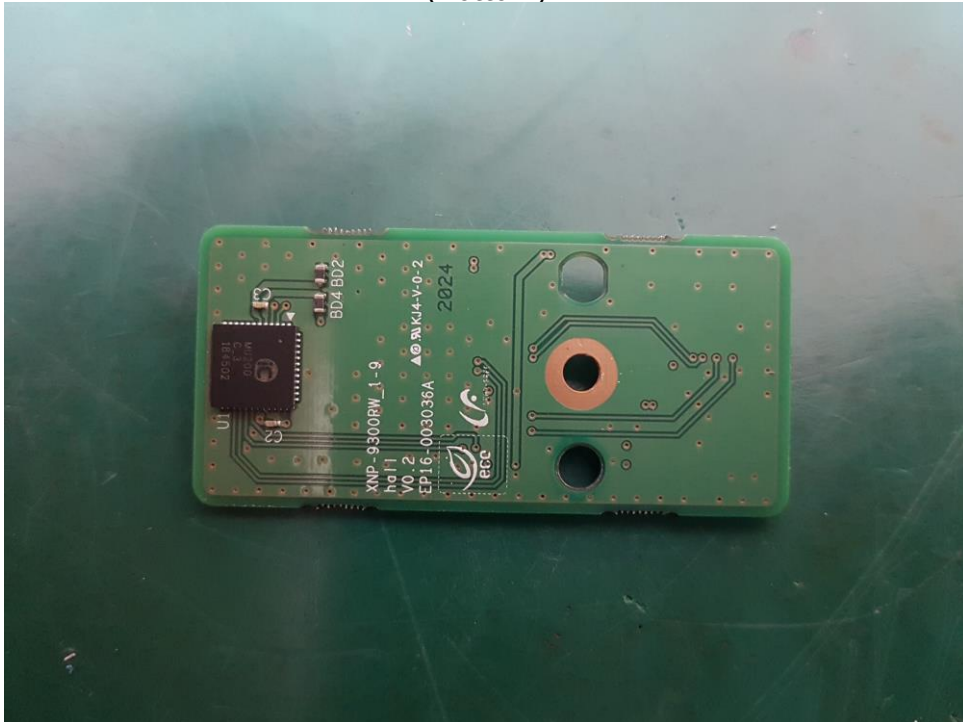
This report shall not be reproduced except in full, without the written approval of KES Co., Ltd.
The results shown in this test report refer only to the sample(s) tested unless otherwise stated.
The authenticity of the test report, contact kes@kes.co.kr

EUT Internal View – Board 10

(Top)



(Bottom)



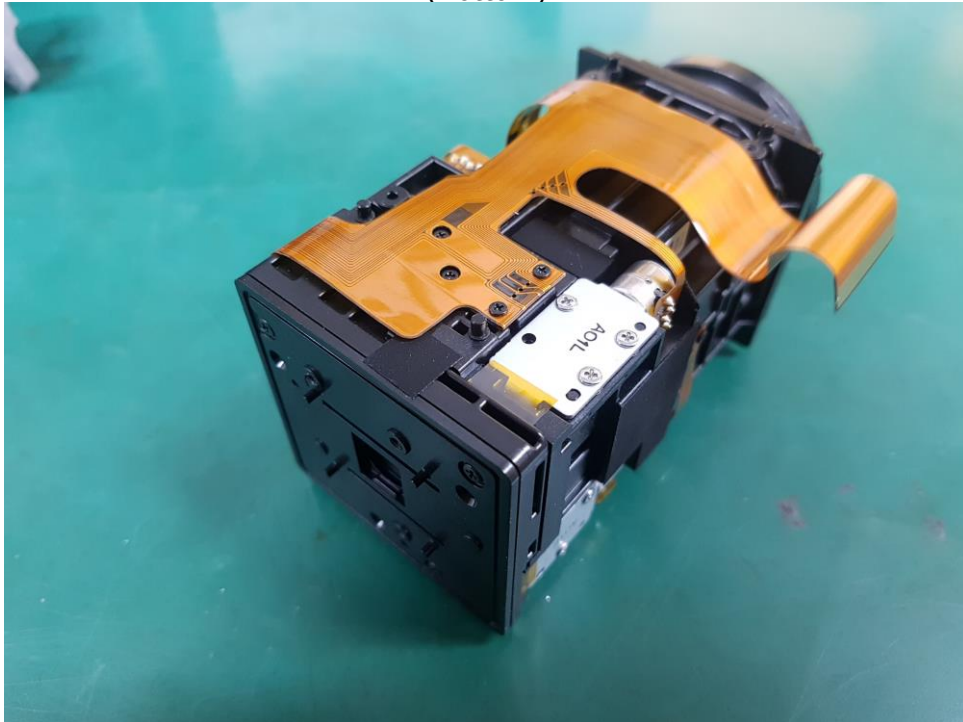
This report shall not be reproduced except in full, without the written approval of KES Co., Ltd.
The results shown in this test report refer only to the sample(s) tested unless otherwise stated.
The authenticity of the test report, contact kes@kes.co.kr

EUT Internal View – Lens

(Top)



(Bottom)



This report shall not be reproduced except in full, without the written approval of KES Co., Ltd.
The results shown in this test report refer only to the sample(s) tested unless otherwise stated.
The authenticity of the test report, contact kes@kes.co.kr

EUT Internal View – PoE Adapter

(Top)



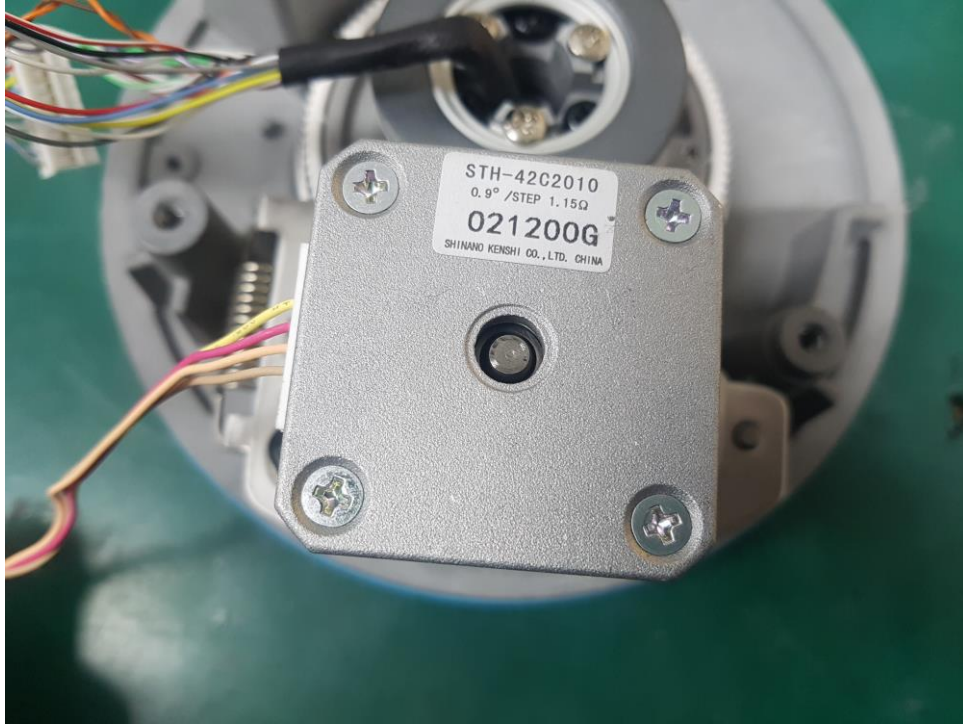
(Bottom)



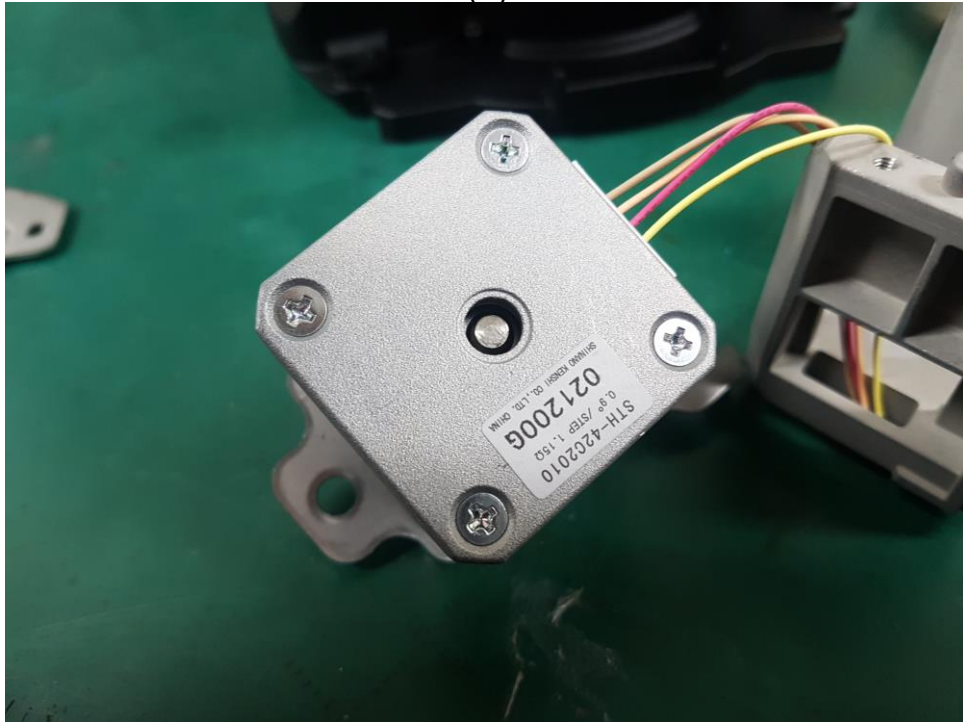
This report shall not be reproduced except in full, without the written approval of KES Co., Ltd.
The results shown in this test report refer only to the sample(s) tested unless otherwise stated.
The authenticity of the test report, contact kes@kes.co.kr

EUT Internal View – Motor

(1)



(2)



Label and Location

**NETWORK CAMERA**

Model No : XNP-6400RW

Manufacturer : HANWHA VISION VIETNAM COMPANY LIMITED

Made in Vietnam

