



TEST REPORT



Report No. : KES-EM240415

Page 1 / 33

KES Co., Ltd.

#3002, #3503, #3701, 40, Simin-daero365beon-gil,
Dongan-gu, Anyang-si, Gyeonggi-do, 14057,
Republic of Korea

Tel : +82-31-425-6200, Fax : +82-31-425-6200

1. Client

Applicant : Hanwha Vision Co., Ltd

Applicant Address : 6, Pangyo-ro 319Beon-gil, Bundang-gu, Seongnam-si, Gyeonggi-do,
Republic of Korea

2. Sample Description

Product name : NETWORK CAMERA

Model/Type No. : TNV-C8011RW

Variant Model : -

Manufacturer : 1. HANWHA VISION VIETNAM COMPANY LIMITED
2. D-TECH CO.,LTD.

Manufacturer Address : 1. Lot O-2, Que Vo Industrial Zone extended Area, Nam Son Ward,
Bac Ninh City, Bac Ninh Province, Vietnam
2. 173-25, Saneop-ro, Gwonseon-gu, Suwon-si, Gyeonggi- do, Korea
(Suwon Industrial Complex)

3. Equipment authorization : Supplier's Declaration of Conformity

4. Date of Receipt : Jan. 31, 2024

5. Test date : Feb. 02, 2024

6. Date of Issue : Feb. 15, 2024

7. Test Results : In Compliance

Tested by

Reviewed by

Jae Won, Lee
EMC Test Engineer

Dae Jung, Choi
EMC Technical Manager

This test report is not related to KS Q ISO/IEC 17025 and KOLAS.

KES-QP16-F01(00-23-01-01)

KES Co., Ltd.

The authenticity of this test report can be found on the verification page of our website (www.kes.co.kr).



REPORT REVISION HISTORY

Date	Test Report No.	Revision History
Feb. 15, 2024	KES-EM240415	Issued

This report shall not be reproduced except in full, without the written approval of KES Co., Ltd. This document may be altered or revised by KES Co., Ltd. personnel only, and shall be noted in the revision section of the document. Any alteration of this document not carried out by KES Co., Ltd. will constitute fraud and shall nullify the document.



TABLE OF CONTENTS

1.0	General Product Description.....	4
1.1	Test Voltage & Frequency	6
1.2	Variant Model Differences	6
1.3	Device Modifications	6
1.4	Equipment Under Test	6
1.5	Support Equipments	6
1.6	External I/O Cabling.....	6
1.7	EUT Operating Mode(s).....	7
1.8	Configuration.....	7
1.9	Remarks when standards applied	8
1.10	Calibration Details of Equipment Used for Measurement	8
1.11	Test Facility	9
1.12	Laboratory Accreditations and Listings	9
2.0	Test Regulations	10
2.1	Conducted Emissions at Mains Power Ports.....	11
2.2	Radiated Electric Field Emissions(Below 1 GHz).....	13
2.3	Radiated Electric Field Emissions(Above 1 GHz)	15
APPENDIX A – TEST DATA		17
Conducted Emissions at Mains Power Ports		17
Radiated Electric Field Emissions(Below 1 GHz)		19
Radiated Electric Field Emissions(Above 1 GHz)		21
Test Setup Photos and Configuration.....		23
Conducted Emissions at Mains Power Ports		23
Radiated Electric Field Emissions(Below 1 GHz)		24
Radiated Electric Field Emissions(Above 1 GHz).....		25
EUT External Photographs.....		26
EUT Internal Photographs.....		27



Report No. : KES-EM240415

1.0 General Product Description

Main Specifications of EUT are:

TNV-C8011RW	
Video	
Imaging Device	1/2.8" progressive 5 MP CMOS
Resolution	2592x1944, 2560x1440, 1920x1080, 1280x960, 1280x720, 800x600, 800x448, 720x576, 720x480, 640x480, 640x360, 320x240
Max. Frame rate	H.265/H.264: Max. 30fps/25fps(60Hz/50Hz) MJPEG: Max. 30fps@5MP Max. 5fps
NETD	None
Pixel Size	None
Min. Illumination	Color: 0.038Lux(F1.6, 1/30sec, 30IRE) BW: 0.0038Lux(F1.6, 1/30sec, 30IRE), 0Lux(IR LED on)
Video Out	USB: Micro USB Type B, 1280x720 for installation
Video Transmission Distance	None
Lens	
Focal Length (Zoom Ratio)	1.6mm fixed focal
Max. Aperture Ratio	F1.6
Angular Field of View	H: 175° / V: 125° / D: 175°
Min. Object Distance	0.3M
Focus Control	Fixed
Lens Type	None
Mount Type	None
Optional Lens	None
Pan / Tilt / Rotate	
Pan / Tilt / Rotate Range	- / -25° ~ +25° / -
Pan Range	None
Pan Speed	None
Tilt Range	None
Tilt Speed	None
Rotate Range	None
Sequence	None
Preset Accuracy	None
Operational	
Camera Title	Displayed up to 85 characters
Direction Indicator	None
Day & Night	Auto(ICR)
Backlight Compensation	BLC, WDR, SDR
Wide Dynamic Range	120dB
IR Viewable Length	15m(49.21ft)
IR Illuminator (Optional)	None
IR Radiation angle	None
IR LED	None
IR Wavelength	long-life 850 nm IR LED
IR Operation	None
Water Removal	None
Auto Tracking	None
Coaxial Protocol	None
Color Palettes	None
Radiometry	
Temperature Detect Range	None
Temperature Accuracy	None
Temperature Detection	None
Additional	None
Network	
Ethernet	RJ-45(10/100BASE-T)
Video Compression	H.265/H.264: Main/High, MJPEG
Audio Compression	G.711 u-law / G.726 Selectable G.726(ADPCM) 8KHz, G.711 8KHz G.726: 16Kbps, 24Kbps, 32Kbps, 40Kbps AAC-LC: 48Kbps at 16KHz
Smart Codec	Manual(Sea area), WiseStreamIII(Based on AI engine)
Video Quality Adjustment	H.264/H.265: Target bitrate level control MJPEG: Quality Level control
Bitrate Control	H.264/H.265: CBR or VBR MJPEG: VBR
Streaming	Unicast(20 users) / Multicast Multiple streaming(Up to 5 profiles)
Protocol	IPv4, IPv6, TCP/IP, UDP/IP, RTP(UDP), RTP(TCP), RTCP, RTSP, NTP, HTTP, HTTPS, SSL/TLS, DHCP, FTP, SMTP, ICMP, IGMP, SNMPv1/v2c/v3(MIB-2), ARP, DNS, DDNS, QoS, UPnP, Bonjour, LLDP, CDP, SRTP (TCP, UDP Unicast), MQTT
SIP support (VoIP, Peer-to-peer)	None
Security	None
Digital Noise Reduction	SSNR V, WiseNRII (Based on AI engine)
Digital Image Stabilization	None
Defog	None
Motion Detection	8ea, 8point Polygonal zones
Privacy Masking	32ea, 4point quadrangle zones
Gain Control	Low / Middle / High
White Balance	ATW / AWC / Manual / Indoor / Outdoor
LDC	Support
Electronic Shutter Speed	Minimum / Maximum / Anti flicker (1/5 ~ 1/12,000sec)
Digital PTZ	Support
Video Rotation	Flip, Mirror, Hallway view(90°/270°)
Analytics	Classified object type: Person/Face/ Vehicle Attributes: VehicleType(car/bus/truck/motorcycle/bicycle) Support DetectionShot Analytics events based on AI engine - Motion detection*, Object detection, Virtual line*(Crossing/Direction), Virtual area*(Loitering/Intrusion/Enter/Exit) Analytics events - Defocus detection, Tampering, Shock detection, Virtual area(Appear/Disappear) * Some of the video analytics only works with people and vehicle detection
Business Intelligence	Based on AI engine: People counting, Vehicle counting, Queue management, Heatmap
Serial Interface	None
Alarm I/O	None
Alarm Triggers	Analytics, Network disconnect
Alarm Events	When alarm trigger occurred - File upload(image) : e-mail/FTP - Notification : e-mail - Recording : SD/SDHC/SDXC or NAS recording at event triggers - Handover(PTZ preset, Send message by HTTP/HTTPS/TCP)
Audio Streaming	None
Audio In	Built-in mic only
Audio Out	None
Light Type	None
Light Viewable Length	None
Application Programming Interface	ONVIF Profile S/G/T/M SUNAPI(HTTP API)
Security	
OS / Firmware Protect	Secure boot, Signed firmware, Firmware encryption
User authentication	Digest Authentication, Prevent brute-force attack
Network authentication	802.1X Authentication(EAP-TLS, EAP-LEAP, EAP-PEAP MSCHAPv2)
Secure Communication	HTTPS, SRTP, WSS(Websocket secure)
Access Control	Access control based on IP address
Data Protect	Authentication information encryption, ZIP compression encryption
Audit	User Access/System/Event log management
Device ID	Device Certificate(Hanwha Private Root CA)
Secure Storage	SDcard partition encrypt
Security Certificate	None
General	
Webpage Language	English, Korean, Chinese, French, Italian, Spanish, German, Japanese, Russian, Portuguese, Czech, Polish, Turkish, Dutch, Hungarian, Greek
Web Viewer	None
Edge Storage	Micro SD/SDHC/SDXC 1slot 256GB
Memory	2GB RAM, 1GB Flash
Environmental & Electrical	
Operating Temperature / Humidity	-30°C ~ +55°C(-22°F ~ +131°F) / Less than 95% RH
Storage Temperature / Humidity	-30°C ~ +60°C(-22°F ~ +140°F) / Less than 95% RH
Certification	IP66, IK10
Input Voltage	PoE(IEEE802.3af, Class3)
Power Consumption	Max 11.5W / Typ 4.8W
Mechanical	
Color / Material	White / Aluminum Hard-coated dome bubble
RAL Code	RAL9003
Product Dimensions / Weight	80(W)x167(H)x57(D)mm(31.5x65.6x22.4"), 600g(1.32 lb)
Compatible Conduit hole / Gang	Conduit hole : None Gangbox : Single
Hanging Mount (Dome)	TBD
Skin Cover	None
Skin Cover (Dome)	None
Weather Cap (Dome)	None



Report No. : KES-EM240415

Power Module	None
Backbox	None
Ceiling Mount (Assy)	None
Wall Mount	None
Pole Mount	None
In-ceiling Mount	None
Parapet Mount	None
Corner Mount	None
Tilt Mount	SBV-140TBW
Housing (Box)	None
Cabinet	None
Gang Plate	None
Conduit Adaptor	None
Other Compatible Models	None
Certifications & Standards	
Network	None
EMC	EN 55032:2015/A11:2020 EN 50130-4:2011/A1:2014 FCC 47 CFR Part 15, Subpart B Class A IC Regulation ICES-003 Issue 7 Class A KS C 9832:2023 KS C 9835:2019 AS/NZS CISPR 32 Class A VCCI CISPR 32 Class A
Safety	UL 62368-1, CSA C22.2 NO. 62368-1 KC 62368-1
Environment	IEC EN 60529: 1989+A1:1999+A2:2013 IEC EN 62262:2005 IEC EN 63000:2018
Video	None
DORI (EN62676-4 standard)	
Detect (25PPM/ 8PPF)	TBD
Observe (63PPM/ 19PPF)	TBD
Recognize (125PPM/ 38PPF)	TBD
Identify (250PPM/ 76PPF)	TBD
LPR/ANPR/MMCR	
Speed Description	None
Speed limit	None
Min. Forward Distance	None
Max. Forward Distance	None
Max. Horizontal Angle	None
Max. Vertical Angle	None
Horizontal Offset	None
Camera Height	None
Lane Coverage	None
Vehicle Recognition	None
Available Countries	None
Wisenet Road AI LPR/ANPR/MMCR	
Solution	None
Speed Description	None
Lane Coverage	None
Speed limit	None
Min. Forward Distance	None
Max. Forward Distance	None
Max. Horizontal Angle	None
Max. Vertical Angle	None
Horizontal Offset	None
Camera Height	None
Vehicle Recognition	None
Available Countries	None
Ver	202312



1.1 Test Voltage & Frequency

Unless indicated otherwise on the individual data sheet or test results, the test voltage and frequency was as indicated below.

☒ AC 120 V, 60 Hz (PoE Adapter Input power)

1.2 Variant Model Differences

Not applicable

1.3 Device Modifications

Not applicable

1.4 Equipment Under Test

Description	Model Number	Serial Number	Manufacturer	Remarks
NETWORK CAMERA	TNV-C8011RW	-	HANWHA VISION VIETNAM COMPANY LIMITED	EUT

1.5 Support Equipments

Description	Model Number	Serial Number	Manufacturer	Remarks
Laptop	LG15U590	-	LG Electronics Co., Ltd.	-
Laptop Adapter	A13-040N3A	-	CHICONY POWER TECHNOLOGY (Chongqing) CO., LTD.	-
PoE Injector	PT-PSE109GBRO-AH	-	Dongguan PROCET Network Technology Co.,Ltd	-
Micro SD Card	-	-	Sandisk	32 GB

1.6 External I/O Cabling

Start		END		Cable Spec.	
Description	I/O Port	Description	I/O Port	Length	Shield
NETWORK CAMERA (EUT)	Micro SD Slot	Micro SD Card	Micro SD Slot	-	-
	RJ-45(PoE)	PoE Injector	RJ-45(PoE)	3.5	U
PoE Injector	RJ-45(LAN)	Laptop	RJ-45(LAN)	2.0	U
Laptop	DC Jack	Laptop Adapter	DC Jack	1.6	U

* Unshielded=U, Shielded=S

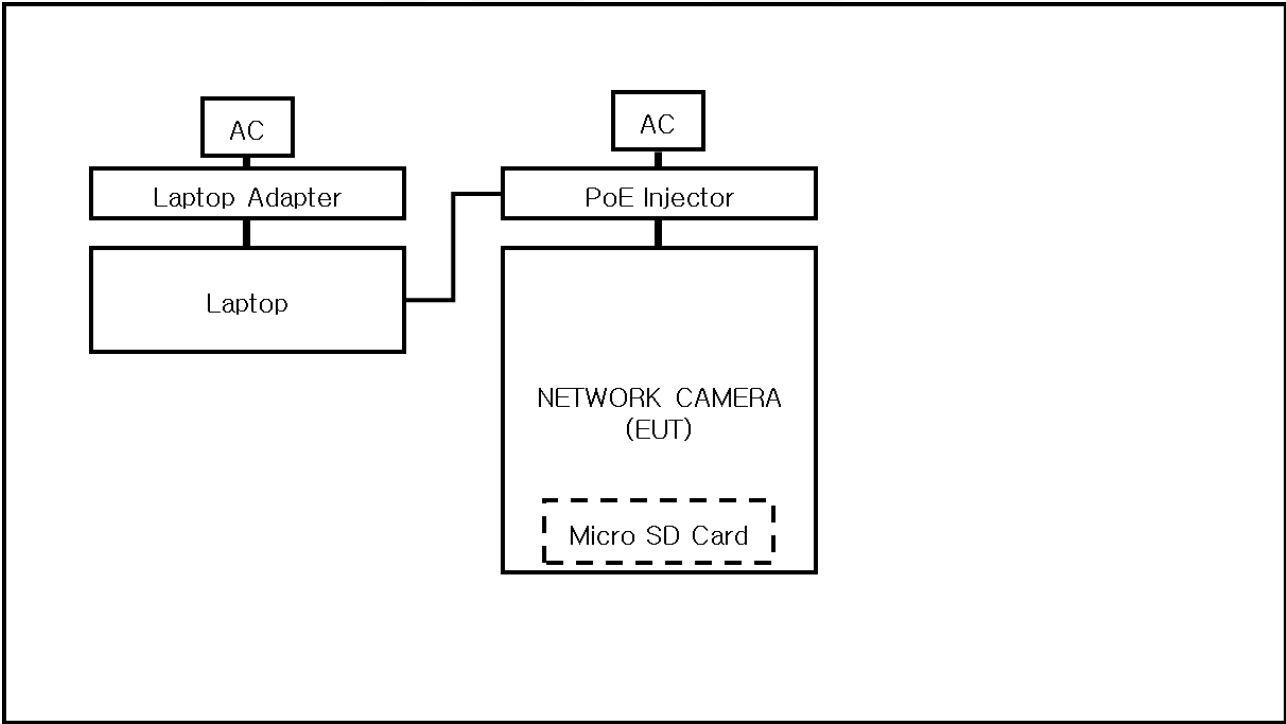


1.7 EUT Operating Mode(s)

Test mode	operating
Operating	1. Monitoring EUT Using Web Viewer, Ping Test 2. After testing, checked the files stored on Micro SD card.

EUT Test operating S/W		
Name	Version	Manufacture Company
Web Viewer	-	Hanwha Vision Co., Ltd

1.8 Configuration





1.9 Remarks when standards applied

- The Micro 5 Pin port is for administrator use, so it is not tested.

-Port picture for administrator



1.10 Calibration Details of Equipment Used for Measurement

Test equipment and test accessories are calibrated on regular basis. The maximum time between calibrations is one year or what is recommended by the manufacturer, whichever is less.



1.11 Test Facility

The measurement facility is located at 473-21, Gayeo-ro, Yeosu-si, Gyeonggi-do, 12658, Korea, Republic of. The sites are constructed in conformance with the requirements of ANSI C63.4a-2017 and CISPR 16-1-4:2019

1.12 Laboratory Accreditations and Listings

Country	Agency	Scope of Accreditation	Logo
KOREA	RRA	EMI (3 m & 10 m Semi-Anechoic Chamber and conducted test site) EMS (ESD, RS, EFT/Burst, Surge, CS, Magnetic, Dips and interruptions)	 KR0100
International	KOLAS	EMI (3 m & 10 m Semi-Anechoic Chamber and conducted test site) EMS (ESD, RS, EFT/Burst, Surge, CS, Magnetic, Dips and interruptions)	 KT489
USA	FCC	3 m & 10 m Semi-Anechoic Chamber Conducted test site to perform FCC Part 15/18 measurements.	 KR0100
Canada	ISED	3 m & 10 m Semi-Anechoic Chamber and Conducted test site	 23298
JAPAN	VCCI	EMI (3 m & 10 m Semi-Anechoic Chamber and conducted test site)	 C-20136, T-20137, R-20181, G-20176
Europe	TÜV SÜD	EMI (3 m & 10 m Semi-Anechoic Chamber and conducted test site) EMS (ESD, RS, EFT/Burst, Surge, CS, Magnetic, Dips and interruptions)	 CARAT 001633 0004



2.0 Test Regulations

The emissions tests were performed according to following regulations:

☒ **47 CFR Part 15, Subpart B**

☐ CISPR 22:2009 +A1:2010

☐ Class A

☐ Class B

☒ ANSI C63.4a-2017

☒ Class A

☐ Class B

☒ **IC Regulation ICES-003 Issue 7**

☐ CAN/CSA-CISPR 32:17

☐ Class A

☐ Class B

☒ ANSI C63.4a-2017

☒ Class A

☐ Class B





2.1 Conducted Emissions at Mains Power Ports

Test Date

Feb. 02, 2024

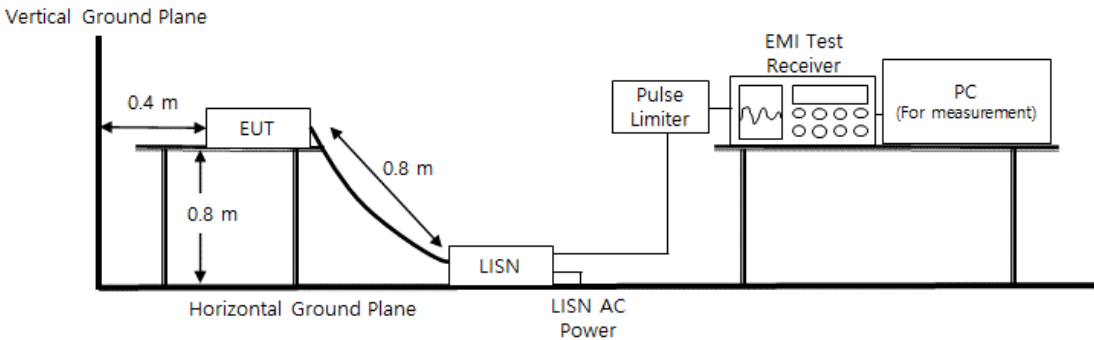
Test Location

Electro wave Shieldroom #6

Test Equipment

Used	Description	Model Number	Manufacturer	Serial Number	Cal. Due
<input checked="" type="checkbox"/>	EMI Test S/W	EMC32	R & S	9.12.00	-
<input checked="" type="checkbox"/>	EMI TEST RECEIVER	ESR3	R & S	101783	11, 08, 2024
<input checked="" type="checkbox"/>	LISN	ENV216	R & S	101787	11, 08, 2024
<input checked="" type="checkbox"/>	LISN	ESH2-Z5	R & S	100450	11, 08, 2024
<input checked="" type="checkbox"/>	PULSE LIMITER	ESH3-Z2	R & S	101915	11, 08, 2024

Diagram of test setup





Test Conditions

Temperature: (22,4 ± 0,1) °C
Relative Humidity: (45,3 ± 0,1) % R.H.

Frequency Range of Measurement

150 kHz to 30 MHz

Instrument Settings

IF Band Width: 9 kHz

Test Results

The requirements are:

- ☒ PASS
- ☐ NOT PASS
- ☐ NOT APPLICABLE

Remarks

See Appendix A for test data.





2.2 Radiated Electric Field Emissions(Below 1 GHz)

Test Date

Feb. 02, 2024

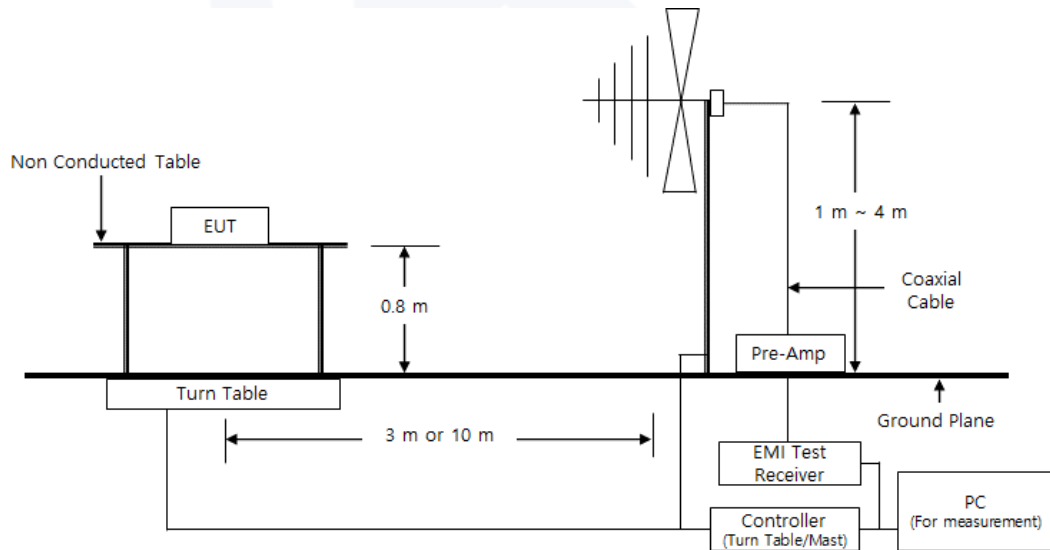
Test Location

☐ OPEN AREA TEST SITE #2☒ SEMI ANECHOIC CHAMBER #4(10m)

Test Equipment

Used	Description	Model Number	Manufacturer	Serial Number	Cal. Due
<input checked="" type="checkbox"/>	EMI Test S/W	EP5/RE	TOYO Corporation	6.0.0	-
<input checked="" type="checkbox"/>	EMI TEST RECEIVER	ESU26	R & S	100551	03, 21, 2024
<input checked="" type="checkbox"/>	AMPLIFIER	SCU 01	R & S	100603	11, 08, 2024
<input checked="" type="checkbox"/>	TRILOG-BROADBAND ANTENNA	VULB9163	Schwarzbeck	715	11, 17, 2024
<input checked="" type="checkbox"/>	ATTENUATOR	8491A	HP	32173	03, 03, 2024

Diagram of test setup





Test Conditions

Temperature: (22,8 ± 0,1) °C
Relative Humidity: (45,8 ± 0,1) % R.H.

Frequency Range of Measurement

30 MHz to 1 GHz

Instrument Settings

IF Band Width: 120 kHz

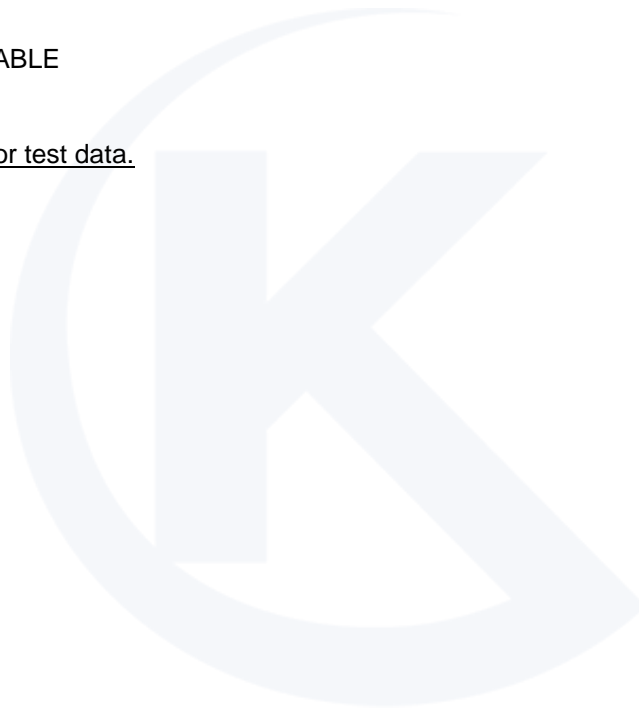
Test Results

The requirements are:

- ☒ PASS
- ☐ NOT PASS
- ☐ NOT APPLICABLE

Remarks

See Appendix A for test data.





2.3 Radiated Electric Field Emissions(Above 1 GHz)

Test Date

Feb. 02, 2024

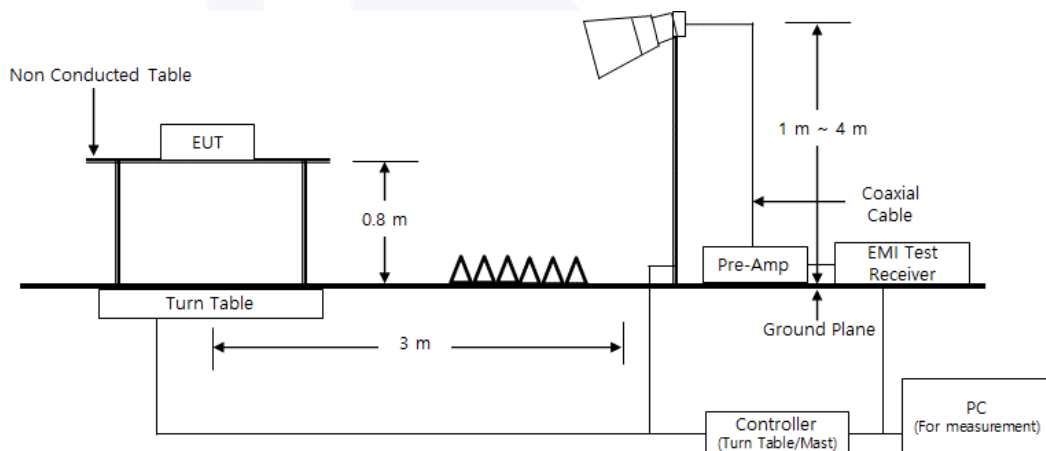
Test Location

SEMI ANECHOIC CHAMBER #5

Test Equipment

Used	Description	Model Number	Manufacturer	Serial Number	Cal. Due
<input checked="" type="checkbox"/>	EMI Test S/W	ES10/RE	TOYO Corporation	2022.01.000	-
<input checked="" type="checkbox"/>	EMI TEST RECEIVER	ESU26	Rohde & Schwarz	100552	03, 21, 2024
<input checked="" type="checkbox"/>	HORN ANTENNA	BBHA 9120D	SCHWARZBECK	9120D-1802	11, 03, 2024
<input checked="" type="checkbox"/>	PREAMPLIFIER	8449B	HP	3008A00538	05, 31, 2024
<input checked="" type="checkbox"/>	ATTENUATOR	8491B	HP	23094	03, 21, 2024

Diagram of test setup





Test Conditions

Temperature: (23,5 ± 0,1) °C
Relative Humidity: (45,4 ± 0,1) % R.H.

Frequency Range of Measurement

1 GHz to 10 GHz

Instrument Settings

IF Band Width: 1 MHz

Test Results

The requirements are:

- ☒ PASS
- ☐ NOT PASS
- ☐ NOT APPLICABLE

Remarks

- See Appendix A for test data.
- The Average of the test data is the cispr average result.



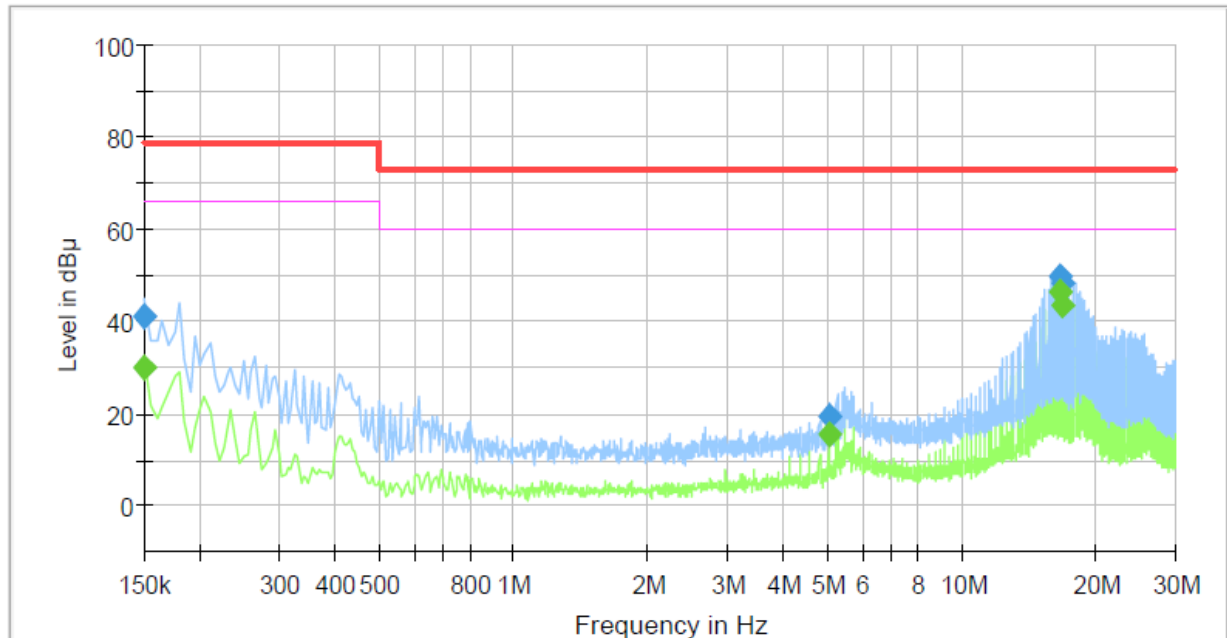
APPENDIX A – TEST DATA

Conducted Emissions at Mains Power Ports

HOT LINE

Common Information

Test Description: Conducted Emission
Model No.: TNV-C8011RW
Phase: PoE_L1
Mode:
Operator Name: KES



Final Result

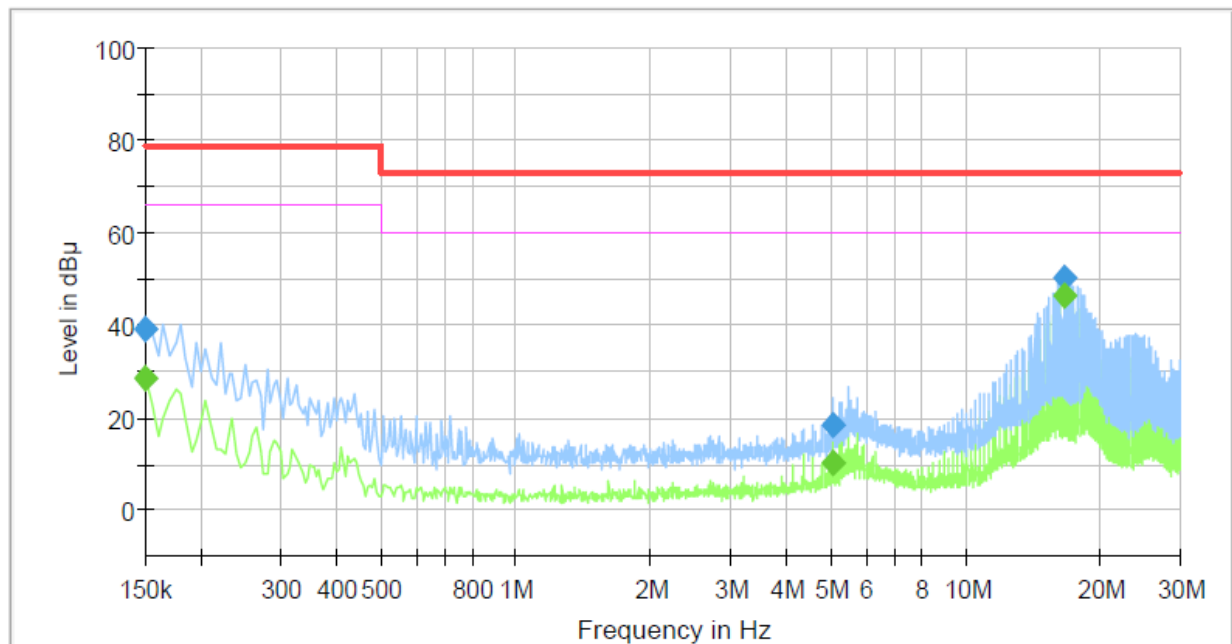
Frequency (MHz)	QuasiPeak (dBμV)	CAverage (dBμV)	Limit (dBμV)	Margin (dB)	Meas. Time (ms)	Bandwidth (kHz)	Line	Corr. (dB)
0.150000	---	30.26	66.00	35.74	1000.0	9.000	L1	19.4
0.150000	41.15	---	79.00	37.85	1000.0	9.000	L1	19.4
5.050000	---	15.72	60.00	44.28	1000.0	9.000	L1	19.8
5.050000	19.30	---	73.00	53.70	1000.0	9.000	L1	19.8
16.525000	---	46.40	60.00	13.60	1000.0	9.000	L1	20.2
16.525000	50.00	---	73.00	23.00	1000.0	9.000	L1	20.2
16.750000	---	43.55	60.00	16.45	1000.0	9.000	L1	20.2
16.750000	48.20	---	73.00	24.80	1000.0	9.000	L1	20.2



NEUTRAL LINE

Common Information

Test Description: Conducted Emission
Model No.: TNV-C8011RW
Phase: PoE_N
Mode:
Operator Name: KES

**Final Result**

Frequency (MHz)	QuasiPeak (dBμV)	CAverage (dBμV)	Limit (dBμV)	Margin (dB)	Meas. Time (ms)	Bandwidth (kHz)	Line	Corr. (dB)
0.150000	---	28.47	66.00	37.53	1000.0	9.000	N	19.3
0.150000	39.21	---	79.00	39.79	1000.0	9.000	N	19.3
5.060000	---	10.39	60.00	49.61	1000.0	9.000	N	19.8
5.060000	18.68	---	73.00	54.32	1000.0	9.000	N	19.8
16.525000	---	46.63	60.00	13.37	1000.0	9.000	N	20.2
16.525000	50.24	---	73.00	22.76	1000.0	9.000	N	20.2

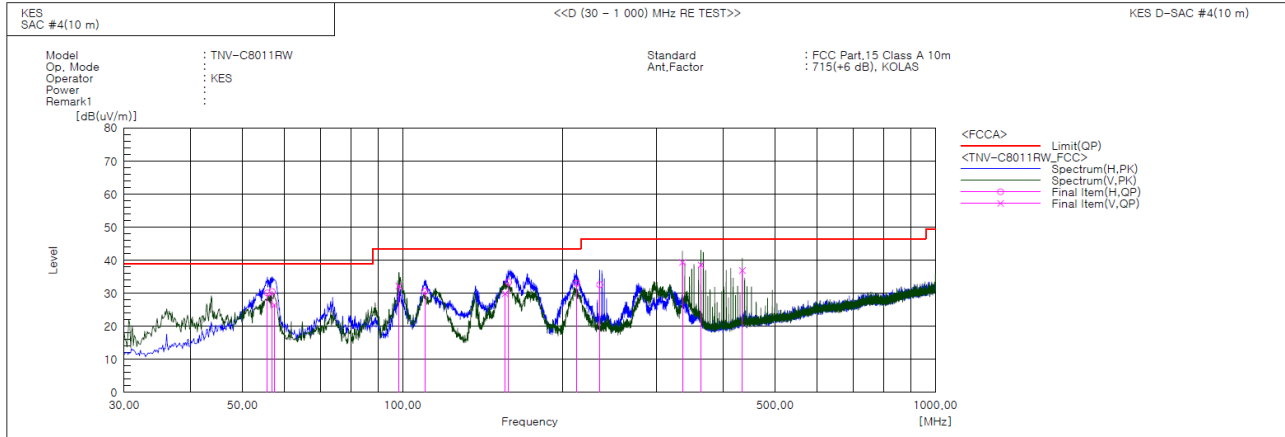
◆ Calculation

QuasiPeak[dBuV] / CAverage [dBuV] = Reading Value[dBuV] + Corr. [dB]

QuasiPeak / CAverage : The Final Value

Reading Value : Not shown in the table.

Corr. : Correction values (LISN FACTOR + (Cable Loss + Pulse Limiter FACTOR))

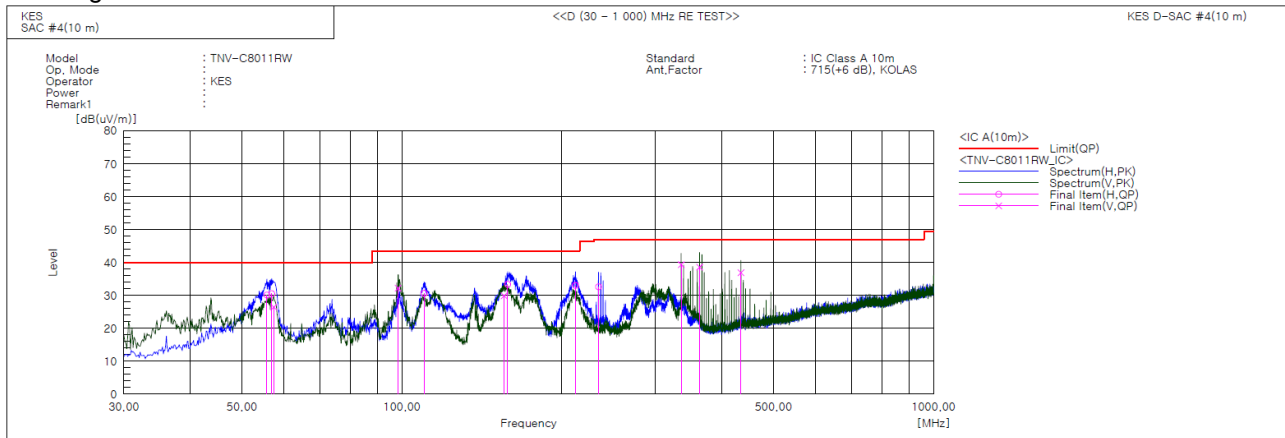
**Radiated Electric Field Emissions(Below 1 GHz)****- 47 CFR Part 15, Subpart B****Final Result**

No.	Frequency [MHz]	(P)	Reading QP [dB(μV)]	c.f [dB(1/m)]	Result QP [dB(μV/m)]	Limit QP [dB(μV/m)]	Margin QP [dB]	Height [cm]	Angle [deg]	Remark
1	55.705	H	51.4	-21.3	30.1	39.0	8.9	195.0	353.0	
2	56.918	H	52.0	-21.5	30.5	39.0	8.5	397.0	24.0	
3	57.403	V	48.0	-21.6	26.4	39.0	12.6	115.0	130.0	
4	98.385	V	54.6	-22.4	32.2	43.5	11.3	141.0	18.0	
5	110.146	H	53.4	-22.8	30.6	43.5	12.9	396.0	197.0	
6	155.615	V	54.9	-25.0	29.9	43.5	13.6	111.0	194.0	
7	158.161	H	58.2	-24.9	33.3	43.5	10.2	196.0	331.0	
8	212.118	H	52.9	-19.9	33.0	43.5	10.5	396.0	260.0	
9	234.306	H	51.6	-19.0	32.6	46.5	13.9	389.0	346.0	
10	335.186	V	54.9	-15.6	39.3	46.5	7.2	141.0	348.0	
11	363.074	V	53.2	-14.6	38.6	46.5	7.9	111.0	288.0	
12	434.248	V	50.1	-13.2	36.9	46.5	9.6	115.0	141.0	



Report No. : KES-EM240415

- IC Regulation ICES-003 Issue 7



Final Result

No.	Frequency [MHz]	(P)	Reading QP [dB(uV)]	c.f [dB(1/m)]	Result QP [dB(uV/m)]	Limit QP [dB(uV/m)]	Margin QP [dB]	Height [cm]	Angle [deg]	Remark
1	55.705	H	51.4	-21.3	30.1	40.0	9.9	195.0	353.0	
2	56.918	H	52.0	-21.5	30.5	40.0	9.5	397.0	24.0	
3	57.403	V	48.0	-21.6	26.4	40.0	13.6	115.0	130.0	
4	98.385	V	54.6	-22.4	32.2	43.5	11.3	141.0	18.0	
5	110.146	H	53.4	-22.8	30.6	43.5	12.9	396.0	197.0	
6	155.615	V	54.9	-25.0	29.9	43.5	13.6	111.0	194.0	
7	158.161	H	58.2	-24.9	33.3	43.5	10.2	196.0	331.0	
8	212.118	H	52.9	-19.9	33.0	43.5	10.5	396.0	260.0	
9	234.306	H	51.6	-19.0	32.6	47.0	14.4	389.0	346.0	
10	335.186	V	54.9	-15.6	39.3	47.0	7.7	141.0	348.0	
11	363.074	V	53.2	-14.6	38.6	47.0	8.4	111.0	288.0	
12	434.248	V	50.1	-13.2	36.9	47.0	10.1	115.0	141.0	

◆ Calculation

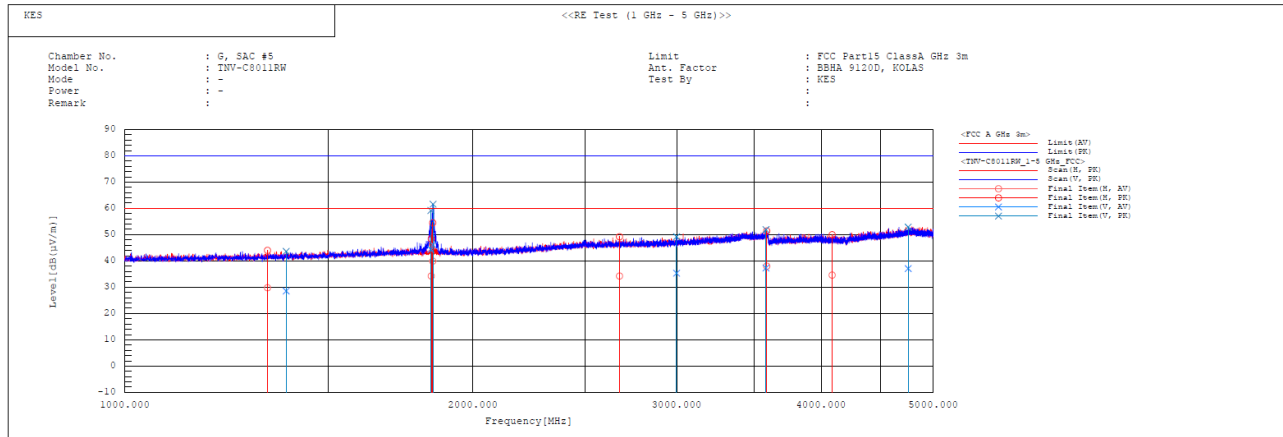
$$\text{Result(QP)} [\text{dB}(\mu\text{V/m})] = (\text{Reading(QP)} [\text{dB}(\mu\text{V})] + \text{c.f} [\text{dB}(1/\text{m})])$$
$$\text{Margin(QP)} [\text{dB}] = \text{Limit} [\text{dB}(\mu\text{V/m})] - \text{Result(QP)} [\text{dB}(\mu\text{V/m})]$$

Reading(QP) : Reading value, Result(QP) : Reading value + Factor value

Limit(QP) : Limit value, c.f : (ANT Factor + Cable Loss - Preamp Factor), Margin: Margin value

**Radiated Electric Field Emissions(Above 1 GHz)**

(1 – 5) GHz



No.	Frequency [MHz]	Pol	Reading AV [dB(μV)]	Reading PK [dB(μV)]	c.f [dB(1/m)]	Result AV [dB(μV/m)]	Result PK [dB(μV/m)]	Limit AV [dB(μV/m)]	Limit PK [dB(μV/m)]	Margin AV [dB]	Margin PK [dB]	Height [cm]	Angle [deg]	Remark
1	1328.324	H	30.0	44.2	-0.2	29.8	44.0	60.0	80.0	30.2	36.0	197.0	42.4	
2	1379.197	V	28.5	43.6	0.0	28.5	43.6	60.0	80.0	31.5	36.4	101.0	91.5	
3	1839.187	V	42.3	57.2	2.0	44.3	59.2	60.0	80.0	15.7	20.8	100.0	8.3	
4	1840.457	H	32.3	46.4	2.0	34.3	48.4	60.0	80.0	25.7	31.6	397.0	297.0	
5	1845.411	H	37.9	52.5	2.0	39.9	54.5	60.0	80.0	20.1	25.5	397.0	297.0	
6	1846.879	V	44.1	59.6	2.0	46.1	61.6	60.0	80.0	13.9	18.4	148.0	0.1	
7	2676.897	H	29.1	44.0	5.2	34.3	49.2	60.0	80.0	25.7	30.8	105.0	0.1	
8	2999.532	V	29.1	43.0	6.2	35.3	49.2	60.0	80.0	24.7	30.8	149.0	255.6	
9	3583.362	V	30.2	44.8	7.1	37.3	51.9	60.0	80.0	22.7	28.1	149.0	113.1	
10	3588.833	H	30.9	44.3	7.1	38.0	51.4	60.0	80.0	22.0	28.6	397.0	51.9	
11	4088.369	H	25.9	41.3	8.7	34.6	50.0	60.0	80.0	25.4	30.0	199.6	273.5	
12	4755.363	V	25.8	41.6	11.3	37.1	52.9	60.0	80.0	22.9	27.1	396.0	23.5	



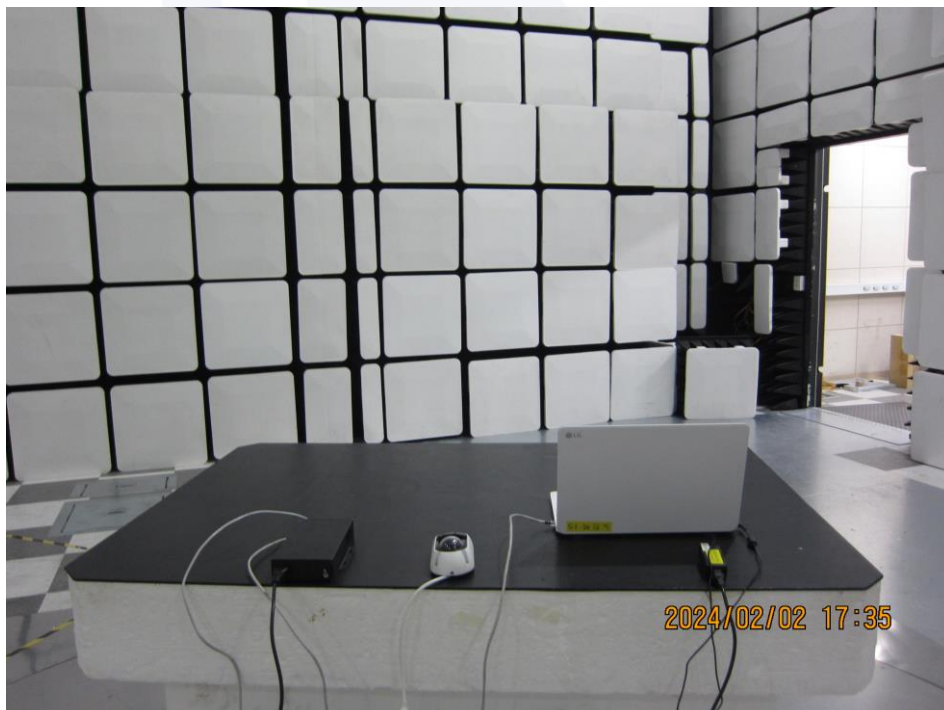
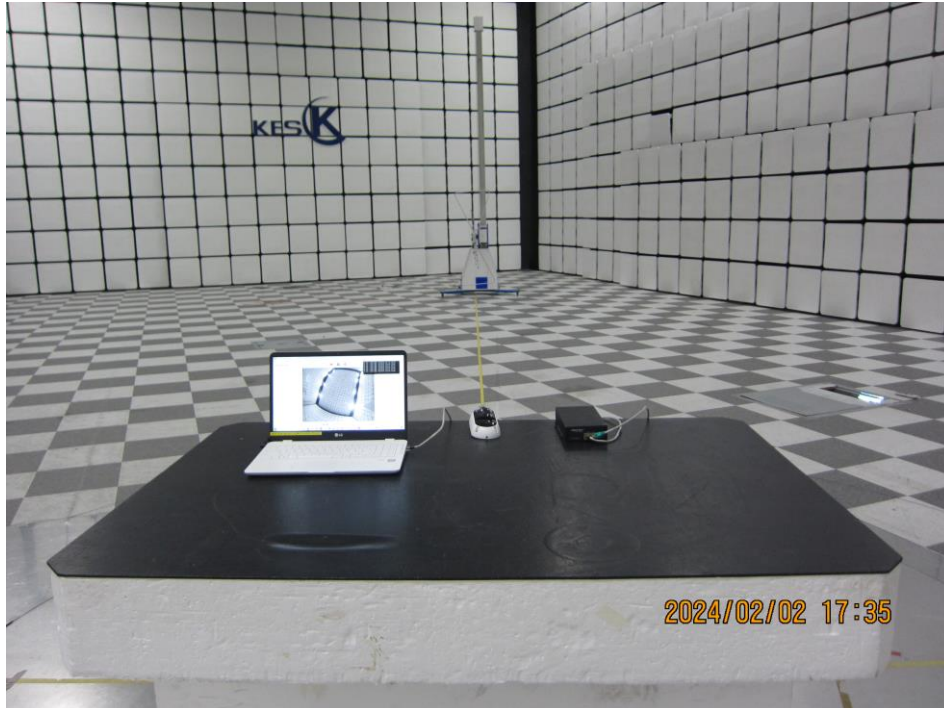
Test Setup Photos and Configuration

Conducted Emissions at Mains Power Ports



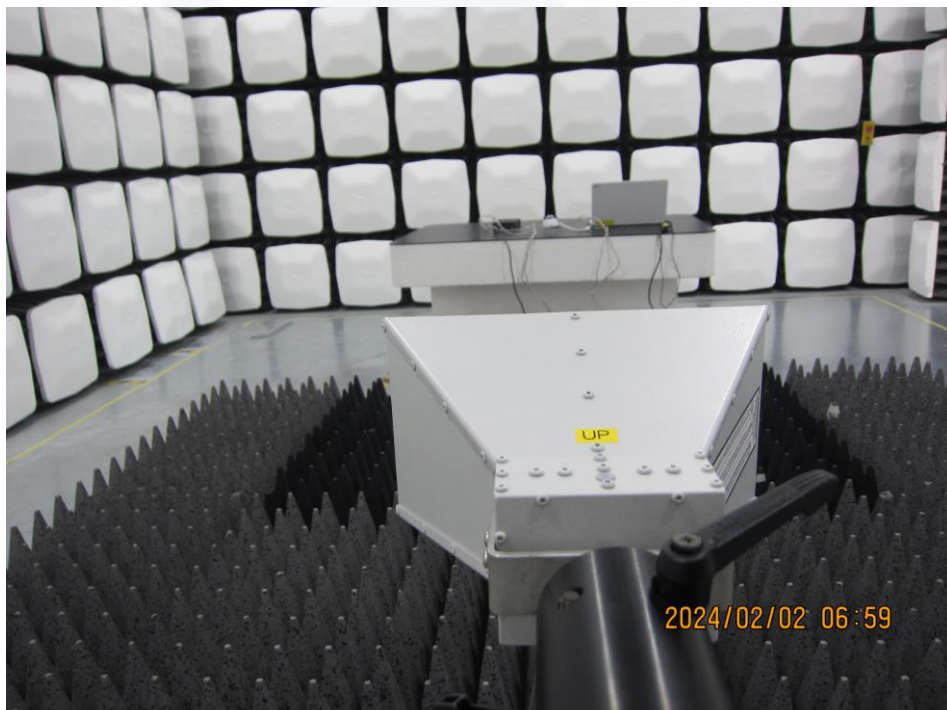
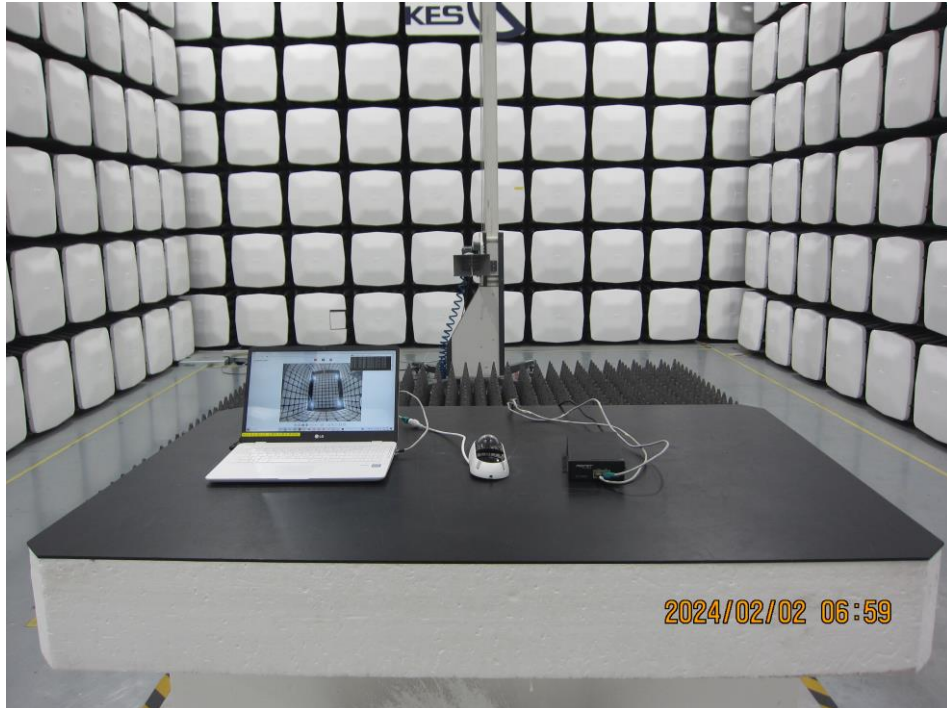


Radiated Electric Field Emissions(Below 1 GHz)





Radiated Electric Field Emissions(Above 1 GHz)





EUT External Photographs

(Top)



(Bottom)





EUT Internal Photographs

(Internal View)



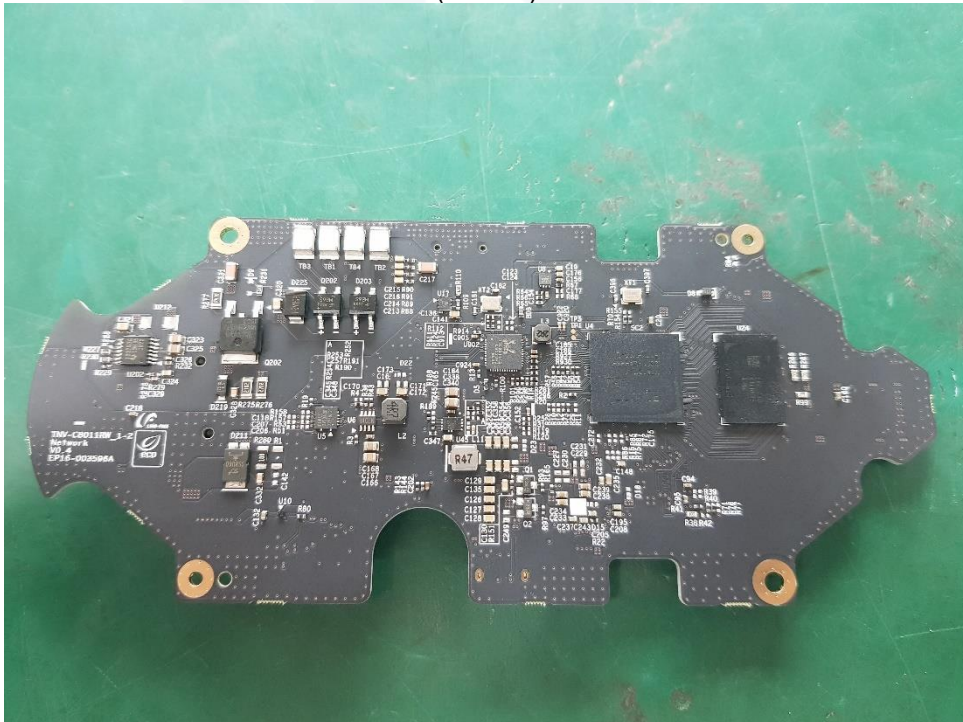


EUT Internal View – Main Board

(Top)



(Bottom)





EUT Internal View – Sub Board 1

(Top)



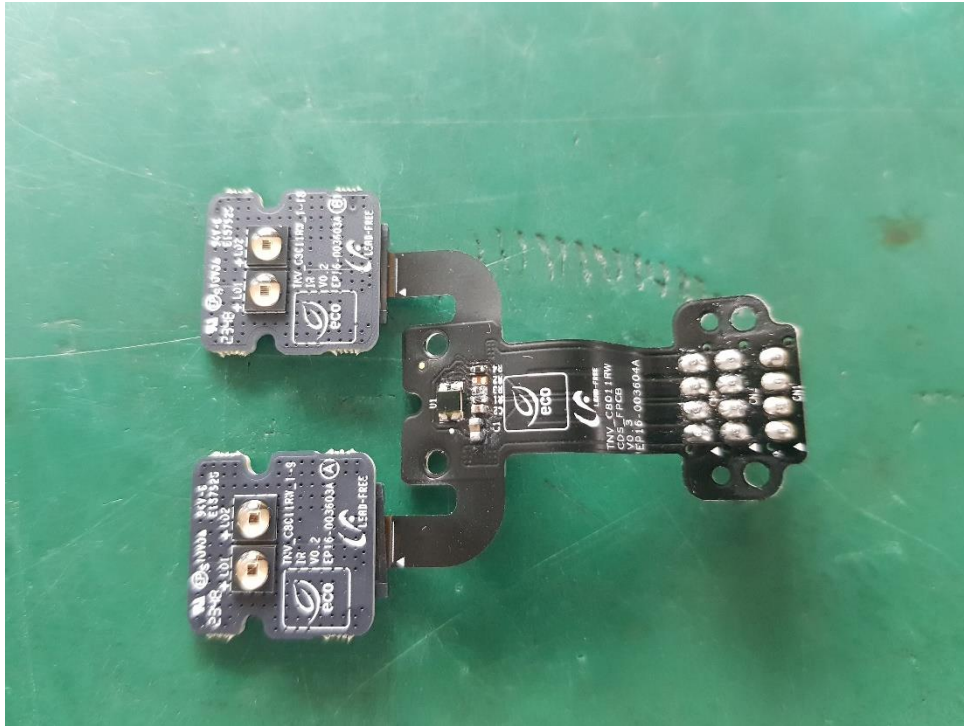
(Bottom)



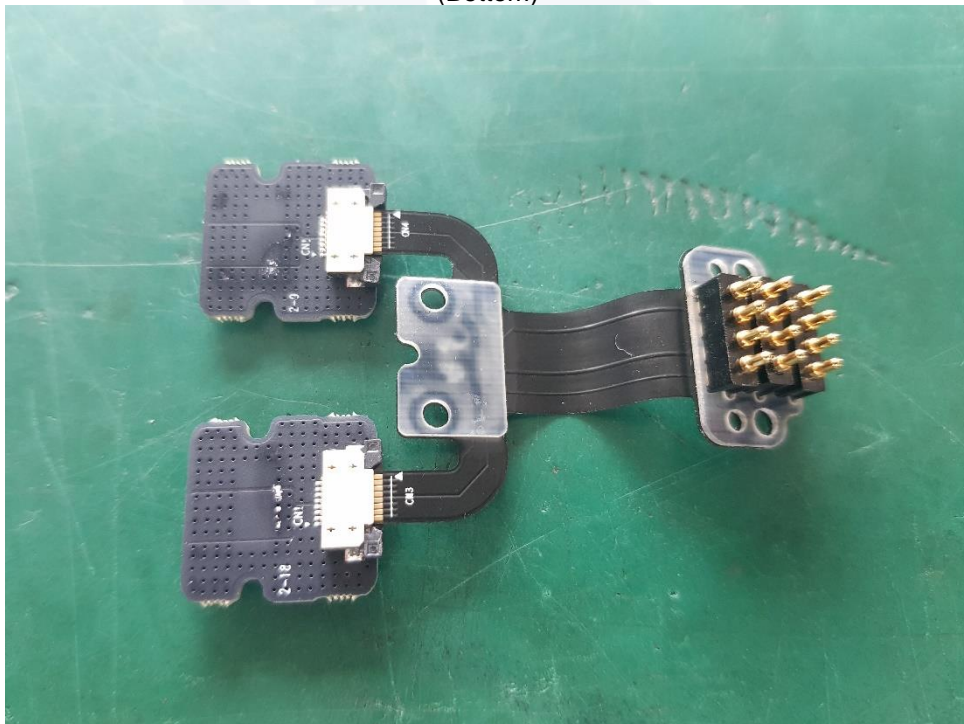


EUT Internal View – Sub Board 2

(Top)



(Bottom)





EUT Internal View – Camera Lens

(Top)



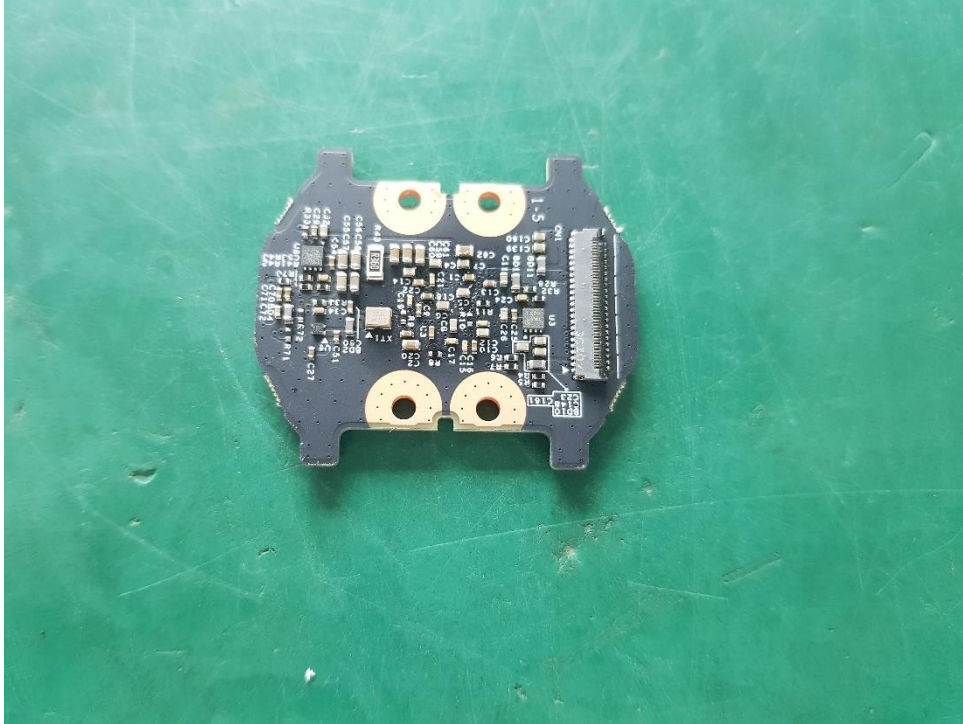
(Bottom)



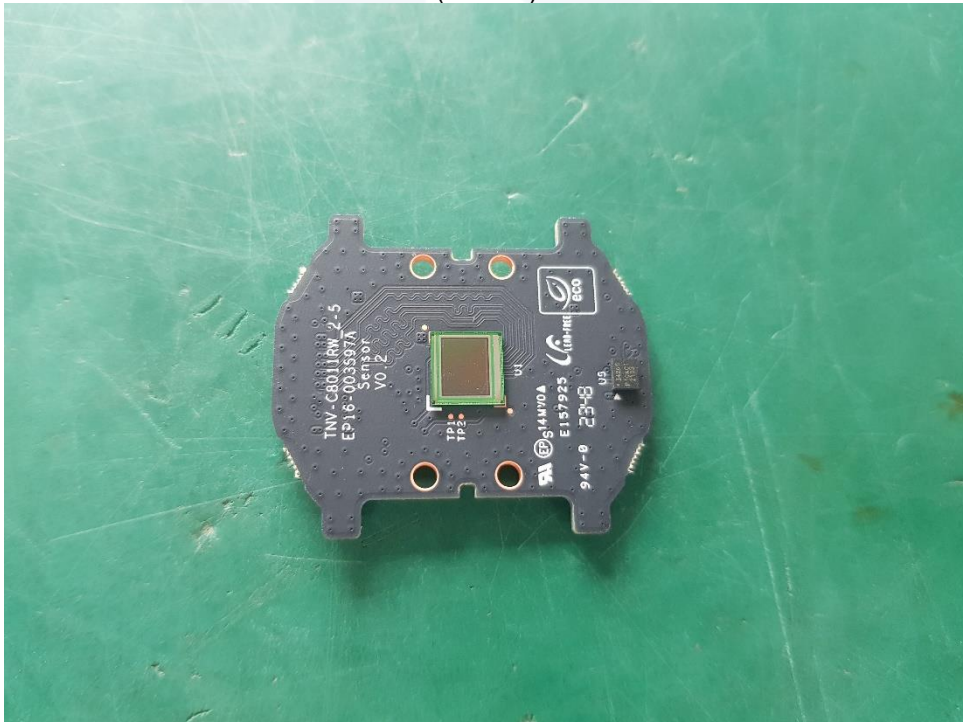


EUT Internal View – Camera Lens Board

(Top)



(Bottom)





Label Photographs

FCC Label



NETWORK CAMERA

TNV-C8011RW

IC Label

CAN ICES-003(A) / NMB-003(A)

This device complies with Industry Canada license-exempt RSS standard(s). Operation is subject to the following two conditions:
(1) this device may not cause interference, and (2) this device must accept any interference, including interference that may cause undesired operation of the device.

Le présent appareil est conforme aux CNR d'Industrie Canada applicables aux appareils radio exempts de licence. L'exploitation est autorisée aux deux conditions suivantes :

(1) l'appareil ne doit pas produire de brouillage, et (2) l'utilisateur de l'appareil doit accepter tout brouillage radioélectrique subi, même si le brouillage est susceptible d'en compromettre le fonctionnement.