



EMC TEST REPORT For VCCI

Test Report No. : KES-E1-18T0560-R1
Date of Issue : Jun. 12, 2023
Product name : THERMAL POSITIONING CAMERA
Model/Type No. : TNU-4041T
Variant Model : -
Applicant : Hanwha Vision Co., Ltd
Applicant Address : 6, Pangyo-ro 319Beon-gil, Bundang-gu, Seongnam-si,
Gyeonggi-do, Republic of Korea
Manufacturer : 1. HANWHA VISION VIETNAM COMPANY LIMITED
2. D-TECH CO.,LTD.
Manufacturer Address : 1. Lot O-2, Que Vo Industrial Zone extended area,
Nam Son commune, Bac Ninh city, Bac Ninh province, Vietnam
2. 173-25, Saneop-ro, Gwonseon-gu, Suwon-si, Gyeonggi- do,
Korea (Suwon Industrial Complex)
Date of Receipt : Jun. 08, 2023
Test date : Oct. 01, 2018 ~ Oct. 02, 2018
Test Results : ☒ **In Compliance** ☐ **Not in Compliance**

Tested by

Min Seong, Kim
EMC Test Engineer

Reviewed by

Dong-Hun, Jang
EMC Technical Manager

This test report is not related to KS Q ISO/IEC 17025 and KOLAS.

**KES Co., Ltd.**

3701, 40, Simin-daero 365beon-gil,
Dongan-gu, Anyang-si, Gyeonggi-do, 14057, Korea
Tel: +82-31-425-6200 / Fax: +82-31-424-0450
www.kes.co.kr

Report No.:
KES-E1-18T0560-R1
Page (2) of (40)

REPORT REVISION HISTORY

Date	Test Report No.	Revision History
Oct. 10, 2018	KES-E1-18T0560	Issued
Oct. 10, 2018	KES-E1-18T0560-R1	Due to customer request - Applicant Change - Manufacturer Delete and Change

This report shall not be reproduced except in full, without the written approval of KES Co., Ltd. This document may be altered or revised by KES Co., Ltd. personnel only, and shall be noted in the revision section of the document. Any alteration of this document not carried out by KES Co., Ltd. will constitute fraud and shall nullify the document.

This report shall not be reproduced except in full, without the written approval of KES Co., Ltd.
The results shown in this test report refer only to the sample(s) tested unless otherwise stated.
The authenticity of the test report, contact kes@kes.co.kr



TABLE OF CONTENTS

1.0	General Product Description.....	4
1.1	Test Voltage & Frequency	8
1.2	Variant Model Differences	8
1.3	Device Modifications	8
1.4	Equipment Under Test.....	8
1.5	Support Equipments	8
1.6	External I/O Cabling	9
1.7	EUT Operating Mode(s)	9
1.8	Configuration.....	10
1.9	Remarks when standards applied	11
1.10	Calibration Details of Equipment Used for Measurement	11
1.11	Test Facility	11
1.12	Laboratory Accreditations and Listings	11
2.0	Test Regulations.....	12
2.1	Conducted Emissions Mains Power Ports.....	14
2.2	Conducted Emissions at Telecommunication Ports.....	15
2.3	Radiated Electric Field Emissions(Below 1 GHz)	16
2.4	Radiated Electric Field Emissions(Above 1 GHz)	17
APPENDIX A – TEST DATA.....		18
Conducted Emissions at Mains Power Ports.....		18
Conducted Emissions at Telecommunication Ports		20
Radiated Electric Field Emissions(Below 1 GHz)		22
Radiated Electric Field Emissions(Above 1 GHz).....		23
Test Setup Photos and Configuration		24
Conducted Voltage Emissions		24
Conducted Telecommunication Emissions		25
Radiated Electric Field Emissions(Below 1 GHz)		26
Radiated Electric Field Emissions(Above 1 GHz).....		27
EUT External Photographs		28
EUT Internal Photographs		29



1.0 General Product Description

Main Specifications of EUT are:

Items		Description	
		TNU-4041T	TNU-4051T
Video	Imaging Device	Uncooled Micro bolometer	
	Pixel size	17μm	
	Effective Pixels	640x480	
	NETD	<50mK	
	Video Out	CVBS : 1.0 Vp-p / 75Ω composite, 720x480(N), 720x576(P), for installation	
Lens	Focal Length (Zoom Ratio)	19mm fixed	35mm fixed
	Max. Aperture Ratio	F1.0	
	Angular Field of View	H:32°/V:24.3°/D:39.2°	H:17.2°/V:13°/D:22°
	Focus control	Fixed	
	Min. Object Distance	11m	36m
	Mount Type	Board-in type	
Pan / Tilt / Rotate	Pan Range	360° Endless	
	Pan Speed	0.025°~120°/sec	
	Tilt Range	-90° ~40°	
	Tilt Speed	0.025°~40°/sec	
	Sequence	Preset (300 ea), Swing, Group (6 ea), Trace, Tour (1 ea), Auto Run, Schedule	
	Preset Accuracy	0.3°	
	Azimuth	Yes (E/W/S/N/NE/NW/SE/SW)	
Operational	Camera Title	Off / On - W/W : English/Numeric/Special Characters - Common : Multi-line (Max 5), Color (Grey/Green/Red/Blue/Black/White), Transparency, Auto Scale by Resolution	
	Digital Image Stabilization	Off / On(with Gyro)	
	Motion Detection	Off/ On(8ea, 8point Polygonal zones), Handover	

**KES Co., Ltd.**

3701, 40, Simin-daero 365beon-gil,
Dongan-gu, Anyang-si, Gyeonggi-do, 14057, Korea
Tel: +82-31-425-6200 / Fax: +82-31-424-0450
www.kes.co.kr

Report No.:
KES-E1-18T0560-R1
Page (5) of (40)

Items		Description	
		TNU-4041T	TNU-4051T
Operational	Video & Audio Analytics	Tampering, Loitering, Directional Detection, Virtual Line, Fence detection, Enter/Exit, Appear / Disappear, Audio Detection, Motion Detection, Sound Classification, Shock detection, Temperature change detection	
	Alarm I/O	Input 1ea / Output 1ea	
	Alarm Triggers	Alarm Input, Motion Detection, Video & Audio Analytics, Network Disconnect	
	Alarm Events	<ul style="list-style-type: none">• File upload via FTP, E-Mail• Notification via E-Mail• local storage(Micro SD/SDHC/SDXC) or NAS recording at Event Triggers• External output	
	Audio In	Selectable (Mic IN/Line IN), Supply voltage: 2.5VDC(4mA), Input impedance: approx. 2K Ohm	
	Audio out	Line out, Max output level: 1 Vrms	
	Pixel count	support	
Network	Ethernet	RJ-45 (10/100BASE-T)	
	Video Compression	H.265/H.264 (MPEG-4 Part 10/AVC) : Main/Baseline/High, Motion JPEG	
	Resolution	640x480, 640x360, 320x240	
	Max. Framerate	H.265/H.264 : Max. 30fps at all resolutions Motion JPEG : Max. 30fps	
	WiseStream II	Support	
	Video Quality Adjustment	H.264/H.265 : Target Bitrate Level Control MJPEG : Target Bitrate Level Control	

This report shall not be reproduced except in full, without the written approval of KES Co., Ltd.
The results shown in this test report refer only to the sample(s) tested unless otherwise stated.
The authenticity of the test report, contact kes@kes.co.kr

**KES Co., Ltd.**

3701, 40, Simin-daero 365beon-gil,
Dongan-gu, Anyang-si, Gyeonggi-do, 14057, Korea
Tel: +82-31-425-6200 / Fax: +82-31-424-0450
www.kes.co.kr

Report No.:
KES-E1-18T0560-R1
Page (6) of (40)

Items		Description	
		TNU-4041T	TNU-4051T
Network	Bitrate Control Method	H.264/H.265 : CBR or VBR MJPEG : VBR	
	Streaming Capability	Multiple Streaming (Up to 10 Profiles)	
	Audio Compression Format	G.711 u-law /G.726 Selectable G.726 (ADPCM) 8KHz, G.711 8KHz G.726 : 16Kbps, 24Kbps, 32Kbps, 40Kbps AAC-LC : 48Kbps at 8/16/32/48KHz	
	Audio Communication	Bi-directional (2-Way)	
	IP	IPv4, IPv6	
	Protocol	TCP/IP, UDP/IP, RTP(UDP), RTP(TCP), RTCP, RTSP, NTP, HTTP, HTTPS, SSL/TLS, DHCP, FTP, SMTP, ICMP, IGMP, SNMPv1/v2c/v3(MIB-2), ARP, DNS, DDNS, QoS, PIM-SM, UPnP, Bonjour	
	Security	HTTPS(SSL) Login Authentication Digest Login Authentication IP Address Filtering User access Log 802.1X Authentication (EAP-TLS, EAP-LEAP)	
	Streaming Method	Unicast / Multicast	
	Max. User Access	20 users at Unicast Mode	
	Edge Storage	Micro SD/SDHC/SDXC (up to 256 GB) - Motion Images recorded in the SD/SDHC/SDXC memory card can be downloaded. NAS(Network Attached Storage) Local PC for Instant Recording	
	Application Programming Interface	ONVIF Profile S/G SUNAPI(HTTP API) Open Platform	
	Webpage Multi Language	English, French, German, Italian, Spanish, Russian, Turkish, Polish, Dutch, Swedish, Czech, Portuguese, Japanese, Chinese, Korean	

This report shall not be reproduced except in full, without the written approval of KES Co., Ltd.
The results shown in this test report refer only to the sample(s) tested unless otherwise stated.
The authenticity of the test report, contact kes@kes.co.kr

**KES Co., Ltd.**

3701, 40, Simin-daero 365beon-gil,
Dongan-gu, Anyang-si, Gyeonggi-do, 14057, Korea
Tel: +82-31-425-6200 / Fax: +82-31-424-0450
www.kes.co.kr

Report No.:

KES-E1-18T0560-R1

Page (7) of (40)

Items		Description	
		TNU-4041T	TNU-4051T
Network	Web Viewer	Supported OS : Windows 7, 8.1, 10, Mac OS X 10.10, 10.11, 10.12 Webviewer Recommended browser: Google Chrome 63 Supported browsers: IE11, MS Edge 41, Mozilla Firefox 57(Windows 64bit only), Apple Safari 11 (Mac OS X only)	
	Central Management Software	SmartViewer, SSM	
Environmental	Operating Temperature / Humidity	-40°C ~ +60°C (-40°F ~ +140°F) / Less than 90% RH	
	Storage Temperature / Humidity	-50°C ~ +60°C (-58°F ~ +140°F) / Less than 90% RH	
	Ingress protect	IP66, NEMA 4X	
	Vandal Resistance	IK10	-
Electrical	Input Voltage/Current	24VAC(± 10%) / 6A(MAX)	
	Power Consumption	TBD	
Mechanical	Color / Material	White / Aluminum	
	Dimension (WxHxD)	(W)219 × (H)528 × (D)335	
	Weight	11.7kg	

This report shall not be reproduced except in full, without the written approval of KES Co., Ltd.
The results shown in this test report refer only to the sample(s) tested unless otherwise stated.
The authenticity of the test report, contact kes@kes.co.kr



1.1 Test Voltage & Frequency

Unless indicated otherwise on the individual data sheet or test results, the test voltage and frequency was as indicated below.

Voltage ☐ 230 Vac ☐ 100 Vac ☒ 24 Vac ☐ 12 Vdc ☐ PoE

Frequency ☐ 50 Hz ☐ 60 Hz ☐ Hz

1.2 Variant Model Differences

Not applicable

1.3 Device Modifications

Not applicable

1.4 Equipment Under Test

Description	Model Number	Serial Number	Manufacturer	Remarks
THERMAL POSITIONING CAMERA	TNU-4041T	-	HANWHA VISION VIETNAM COMPANY LIMITED	EUT

1.5 Support Equipments

Description	Model Number	Serial Number	Manufacturer	Remarks
Notebook	LG15N54	410NZET022292	LG Electronics	-
Notebook Adaptor	PA-1900-08	9702591703	Dongguang Lite Power 2nd Plant	-
Monitor	SMT-2233	ZC6U67VH500194D	Weihai Daewoo Electronics Co., Ltd.	-
Speaker	BR-1000A CUVE	-	DONGGUAN EDFIER TECHNOLOGY CO, LTD	-
MIC	CMK-303	-	CAMAC	-
Alarm	SIP-1201DD D0	-	SAMSUNG TECHWIN CO., LTD.	-
Button Alarm	-	-	-	-
Micro SD Card	-	-	SanDisk	4 GB
Tablet PC	A1432	DQXJWFHDF193	APPLE .Inc	-

1.6 External I/O Cabling

Start		END		Cable Spec.	
Description	I/O Port	Description	I/O Port	Length	Shield
THERMAL POSITIONING CAMERA (EUT)	RJ-45	Notebook	RJ-45	3.0	U
	BNC	Monitor	BNC	3.0	S
	3.5 mm	Speaker	3.5 mm	1.6	U
	3.5 mm	MIC	3.5 mm	1.7	U
	3 Pin	Alarm	3 Pin	3.0	U
	2 Pin	Button Alarm	2 Pin	3.0	U
	Micro SD Slot	Micro SD Card	Micro SD Slot	-	-
Notebook	3.5 mm	Tablet PC	3.5 mm	0.8	-

* Unshielded=U, Shielded=S

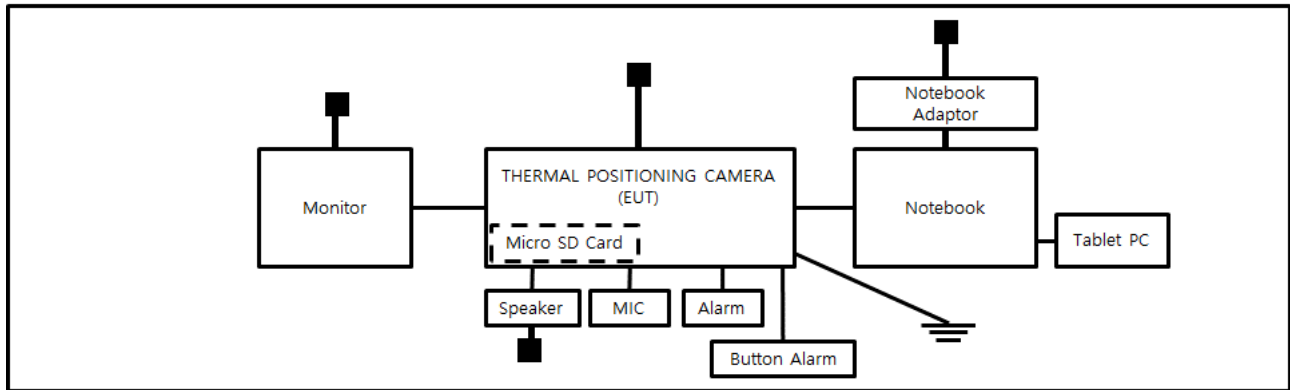
1.7 EUT Operating Mode(s)

Test mode	operating
AC 24 V	EUT Monitoring, Ping Test

EUT Test operating S/W		
Name	Version	Manufacture Company
WebViewer	-	Hanwha Vision Co., Ltd

1.8 Configuration

■ AC Main
 □ DC Main



1.9 Remarks when standards applied

N/A







1.10 Calibration Details of Equipment Used for Measurement

Test equipment and test accessories are calibrated on regular basis. The maximum time between calibrations is one year or what is recommended by the manufacturer, whichever is less.

1.11 Test Facility

The measurement facility is located at 473-21, Gayeo-ro, Yeosu-si, Gyeonggi-do, 12658, Korea, Republic of. The sites are constructed in conformance with the requirements of ANSI C63.4a-2017 and CISPR 16-1-4:2019

1.12 Laboratory Accreditations and Listings

Country	Agency	Scope of Accreditation	Logo
KOREA	RRA	EMI (3 m & 10 m Semi-Anechoic Chamber and conducted test site) EMS (ESD, RS, EFT/Burst, Surge, CS, Magnetic, Dips and interruptions)	 KR0100
International	KOLAS	EMI (3 m & 10 m Semi-Anechoic Chamber and conducted test site) EMS (ESD, RS, EFT/Burst, Surge, CS, Magnetic, Dips and interruptions)	 KT489
USA	FCC	3 m & 10 m Semi-Anechoic Chamber Conducted test site to perform FCC Part 15/18 measurements.	 KR0100
Canada	ISED	3 m & 10 m Semi-Anechoic Chamber and Conducted test site	 23298
JAPAN	VCCI	EMI (3 m & 10 m Semi-Anechoic Chamber and conducted test site)	 C-20136, T-20137, R-20181, G-20176
Europe	TÜV SÜD	EMI (3 m & 10 m Semi-Anechoic Chamber and conducted test site) EMS (ESD, RS, EFT/Burst, Surge, CS, Magnetic, Dips and interruptions)	 CARAT 001633 0004

2.0 Test Regulations

The emissions tests were performed according to following regulations:

☐ **EMC – Directive 2014/30/EU**

☐ EN 61000-6-3:2011

☐ EN 61000-6-1:2007

☐ EN 61000-6-4:2007 +A1:2011

☐ EN 61000-6-2:2005

☐ EN 55011:2007 +A1:2010

☐ Group 1
☐ Class A

☐ Group 2
☐ Class B

☐ EN 55014-1:2006 +A2:2011

☐ EN 55014-2:1997 +A2:2008

☐ EN 55015:2013

☐ EN 61547 :2009

☐ EN 55032:2015

☐ Class A

☐ Class B

☐ EN 55024:2010 +A1:2015

☐ EN 50130-4:2011 +A1:2014

☐ EN 61000-3-2:2014

☐ EN 61000-3-3:2013

☐ EN 61326-1:2013



KES Co., Ltd.

3701, 40, Simin-daero 365beon-gil,
Dongan-gu, Anyang-si, Gyeonggi-do, 14057, Korea
Tel: +82-31-425-6200 / Fax: +82-31-424-0450
www.kes.co.kr

Report No.:
KES-E1-18T0560-R1
Page (13) of (40)

-
- | | | |
|---|---|----------------------------------|
| <input checked="" type="checkbox"/> VCCI CISPR 32:2016 | <input checked="" type="checkbox"/> Class A | <input type="checkbox"/> Class B |
| <input type="checkbox"/> AS/NZS CISPR22:2009 +A1:2010 | <input type="checkbox"/> Class A | <input type="checkbox"/> Class B |
| <input type="checkbox"/> 47 CFR Part 15, Subpart B | | |
| <input type="checkbox"/> CISPR 22:2009 +A1:2010 | <input type="checkbox"/> Class A | <input type="checkbox"/> Class B |
| <input type="checkbox"/> ANSI C63.4-2009 | | |
| <input type="checkbox"/> IC Regulation ICES-003 : 2016 | | |
| <input type="checkbox"/> CAN/CSA CISPR 22-10 | <input type="checkbox"/> Class A | <input type="checkbox"/> Class B |
| <input type="checkbox"/> ANSI C63.4-2014 | | |
|
 | | |
| <input type="checkbox"/> RE- Directive 2014/53/EU | | |
| <input type="checkbox"/> EN 301 489-1 V1.9.2 | | |
| <input type="checkbox"/> Equipment for fixed use | | |
| <input type="checkbox"/> Equipment for vehicular use | | |
| <input type="checkbox"/> Equipment for portable use | | |
| <input type="checkbox"/> EN 301 489-3 V1.6.1 | | |
| <input type="checkbox"/> EN 301 489-17 V2.2.1 | | |
| <input type="checkbox"/> EN 60945:2002 | | |

This report shall not be reproduced except in full, without the written approval of KES Co., Ltd.
The results shown in this test report refer only to the sample(s) tested unless otherwise stated.
The authenticity of the test report, contact kes@kes.co.kr



2.1 Conducted Emissions Mains Power Ports

Test Date

Oct. 01, 2018

Test Location

Electro wave Shieldroom #6

Test Equipment

Used	Description	Model Number	Manufacturer	Serial Number	Cal. Due
<input checked="" type="checkbox"/>	EMI Test S/W	EMC32	R & S	9.12.00	-
<input checked="" type="checkbox"/>	EMI TEST RECEIVER	ESR3	R & S	101781	04, 25, 2019
<input checked="" type="checkbox"/>	LISN	ENV216	R & S	101787	01, 05, 2019
<input checked="" type="checkbox"/>	LISN	ESH2-Z5	R & S	100450	04, 25, 2019
<input checked="" type="checkbox"/>	PULSE LIMITER	ESH3-Z2	R & S	101915	11, 27, 2018

Test Conditions

Temperature: 24,0 °C
Relative Humidity: 53,8 % R.H.

Frequency Range of Measurement

150 kHz to 30 MHz

Instrument Settings

IF Band Width: 9 kHz

Test Results

The requirements are:

- ☒ PASS
☐ NOT PASS
☐ NOT APPLICABLE

Remarks

See Appendix A for test data.

2.2 Conducted Emissions at Telecommunication Ports

Test Date

Oct. 01, 2018

Test Location

Electro wave Shieldroom #6

Test Equipment

Used	Description	Model Number	Manufacturer	Serial Number	Cal. Due
<input checked="" type="checkbox"/>	EMI Test S/W	EMC32	R & S	9.12.00	-
<input checked="" type="checkbox"/>	EMI TEST RECEIVER	ESR3	R & S	101781	04, 25, 2019
<input checked="" type="checkbox"/>	LISN	ENV216	R & S	101787	01, 05, 2019
<input checked="" type="checkbox"/>	LISN	ESH2-Z5	R & S	100450	04, 25, 2019
<input checked="" type="checkbox"/>	PULSE LIMITER	ESH3-Z2	R & S	101915	11, 27, 2018
<input checked="" type="checkbox"/>	8-WIRE ISN CAT3,5	ENY81	R & S	100174	01, 07, 2019
<input type="checkbox"/>	8-WIRE ISN CAT6	ENY81-CAT6	R & S	101665	01, 07, 2019
<input type="checkbox"/>	ISN	ISN S8	SCHWARZBECK	ISN-S8-0019	05, 09, 2019
<input type="checkbox"/>	CDN	CDNS502A	TESEQ	40431	01, 05, 2019

Test ConditionsTemperature: 24,0 °C
Relative Humidity: 53,8 % R.H.**Frequency Range of Measurement**

150 kHz to 30 MHz

Instrument Settings

IF Band Width: 9 kHz

Test Results

The requirements are:

- ☒ PASS
☐ NOT PASS
☐ NOT APPLICABLE

RemarksSee Appendix A for test data.

This report shall not be reproduced except in full, without the written approval of KES Co., Ltd.
The results shown in this test report refer only to the sample(s) tested unless otherwise stated.
The authenticity of the test report, contact kes@kes.co.kr



2.3 Radiated Electric Field Emissions(Below 1 GHz)

Test Date

Oct. 02, 2018

Test Location

☐ OPEN AREA TEST SITE #2 ☒ SEMI ANECHOIC CHAMBER #4(10m)

Test Equipment

Used	Description	Model Number	Manufacturer	Serial Number	Cal. Due
<input checked="" type="checkbox"/>	EMI Test S/W	EP5/RE	TOYO Corporation	6.0.0	-
<input checked="" type="checkbox"/>	EMI TEST RECEIVER	ESU26	R & S	100551	04, 11, 2019
<input checked="" type="checkbox"/>	AMPLIFIER	SCU 01	R & S	100603	11, 27, 2018
<input checked="" type="checkbox"/>	TRILOG-BROADBAND ANTENNA	VULB9163	Schwarzbeck	714	11, 28, 2018

Test Conditions

Temperature: 24,1 °C
Relative Humidity: 54,9 % R.H.

Frequency Range of Measurement

30 MHz to 1 GHz

Instrument Settings

IF Band Width: 120 kHz

Test Results

The requirements are:

- ☒ PASS
☐ NOT PASS
☐ NOT APPLICABLE

Remarks

See Appendix A for test data.



2.4 Radiated Electric Field Emissions(Above 1 GHz)

Test Date

Oct. 02, 2018

Test Location

SEMI ANECHOIC CHAMBER #3

Test Equipment

Used	Description	Model Number	Manufacturer	Serial Number	Cal. Due
<input checked="" type="checkbox"/>	EMI Test S/W	EP5/RE	TOYO Corporation	6.0.0	-
<input checked="" type="checkbox"/>	EMI TEST RECEIVER	ESR7	R & S	101190	08, 06, 2019
<input checked="" type="checkbox"/>	PREAMPLIFIER	8449B	AGILENT	3008A01967	05, 31, 2019
<input type="checkbox"/>	ATTENUATOR	8491A	HP	35496	03, 21, 2019
<input checked="" type="checkbox"/>	DOUBLE RIDGED HORN ANTENNA	SAS-571	A.H.SYSTEM,INC	781	05, 02, 2019

Test Conditions

Temperature: 23,4 °C
Relative Humidity: 54,9 % R.H.

Frequency Range of Measurement

1 GHz to 6 GHz

Instrument Settings

IF Band Width: 1 MHz

Test Results

The requirements are:

- ☒ PASS
☐ NOT PASS
☐ NOT APPLICABLE

Remarks

See Appendix A for test data.

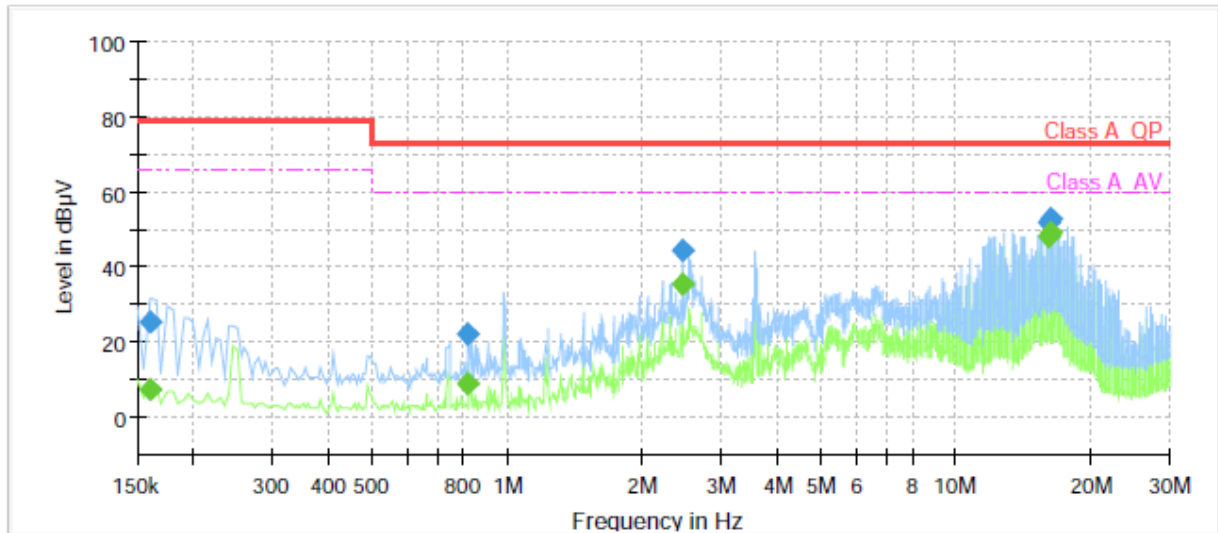
APPENDIX A – TEST DATA

Conducted Emissions at Mains Power Ports

HOT LINE

Common Information

Test Description: Conducted Emission
Model No.: TNU-4041T
Mode: H
Operator Name: KES



Final Result

Frequency (MHz)	QuasiPeak (dBµV)	CAverage (dBµV)	Limit (dBµV)	Margin (dB)	Meas. Time (ms)	Bandwidth (kHz)	Line	Corr. (dB)
0.160000	---	7.30	66.00	58.70	1000.0	9.000	L1	19.5
0.160000	25.44	---	79.00	53.56	1000.0	9.000	L1	19.5
0.820000	---	9.29	60.00	50.71	1000.0	9.000	L1	20.0
0.820000	22.29	---	73.00	50.71	1000.0	9.000	L1	20.0
2.465000	---	35.64	60.00	24.36	1000.0	9.000	L1	20.2
2.465000	44.24	---	73.00	28.76	1000.0	9.000	L1	20.2
16.165000	---	48.38	60.00	11.62	1000.0	9.000	L1	20.2
16.165000	51.87	---	73.00	21.13	1000.0	9.000	L1	20.2
16.230000	---	49.38	60.00	10.62	1000.0	9.000	L1	20.2
16.230000	52.94	---	73.00	20.06	1000.0	9.000	L1	20.2

This report shall not be reproduced except in full, without the written approval of KES Co., Ltd.

The results shown in this test report refer only to the sample(s) tested unless otherwise stated.

The authenticity of the test report, contact kes@kes.co.kr

NEUTRAL LINE

Common Information

Test Description:

Model No.:

Mode

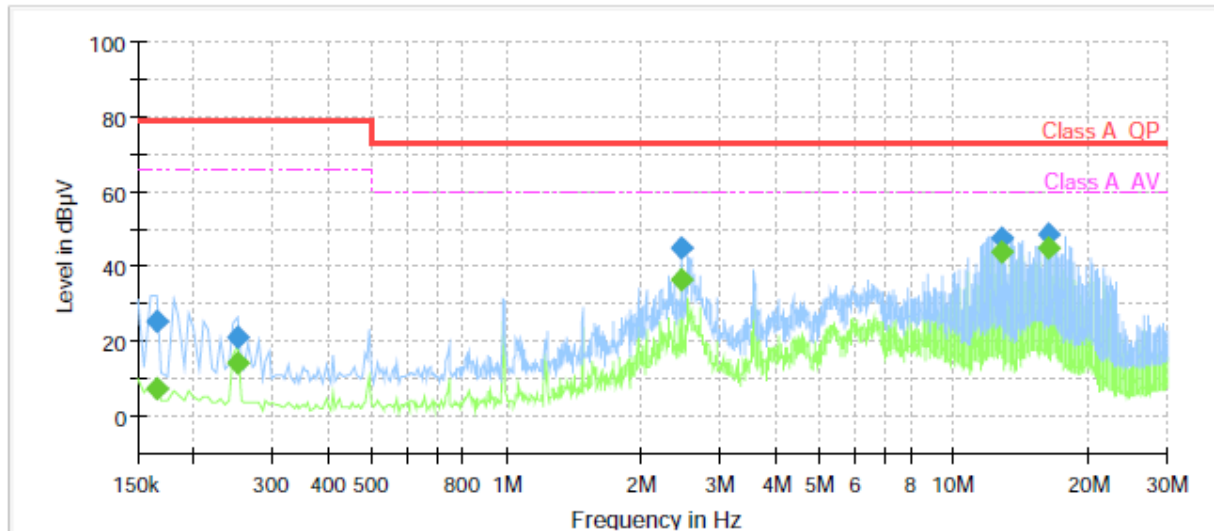
Operator Name:

Conducted Emission

TNU-4041T

N

KES



Final Result

Frequency (MHz)	QuasiPeak (dBµV)	CAverage (dBµV)	Limit (dBµV)	Margin (dB)	Meas. Time (ms)	Bandwidth (kHz)	Line	Corr. (dB)
0.165000	---	7.36	66.00	58.64	1000.0	9.000	N	19.5
0.165000	25.54	---	79.00	53.46	1000.0	9.000	N	19.5
0.250000	---	14.21	66.00	51.79	1000.0	9.000	N	19.5
0.250000	21.38	---	79.00	57.62	1000.0	9.000	N	19.5
2.465000	---	36.51	60.00	23.49	1000.0	9.000	N	20.2
2.465000	45.14	---	73.00	27.86	1000.0	9.000	N	20.2
12.745000	---	44.10	60.00	15.90	1000.0	9.000	N	20.2
12.745000	47.56	---	73.00	25.44	1000.0	9.000	N	20.2
16.230000	---	45.05	60.00	14.95	1000.0	9.000	N	20.2
16.230000	48.62	---	73.00	24.38	1000.0	9.000	N	20.2

◆ Calculation

$$\text{QuasiPeak [dBuV]} / \text{CAverage [dBuV]} = \text{Reading Value [dBuV]} + \text{Corr. [dB]}$$

QuasiPeak / CAverage : The Final Value

Reading Value : Not shown in the table.

Corr. : Correction values (LISN FACTOR + (Cable Loss + Pulse Limiter FACTOR))



KES Co., Ltd.

3701, 40, Simin-daero 365beon-gil,
Dongan-gu, Anyang-si, Gyeonggi-do, 14057, Korea
Tel: +82-31-425-6200 / Fax: +82-31-424-0450
www.kes.co.kr

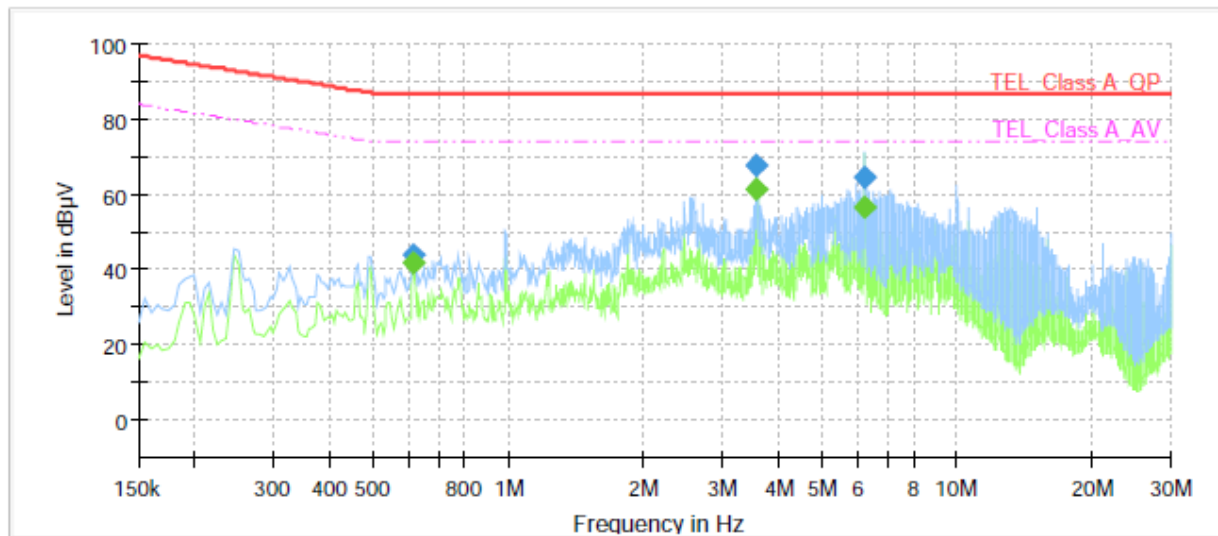
Report No.:
KES-E1-18T0560-R1
Page (20) of (40)

Conducted Emissions at Telecommunication Ports

[10 Mbps]

Common Information

Test Description: Telecommunication Emission
Model No.: TNU-4041T
Mode: 10 Mbps
Operator Name: KES



Final Result

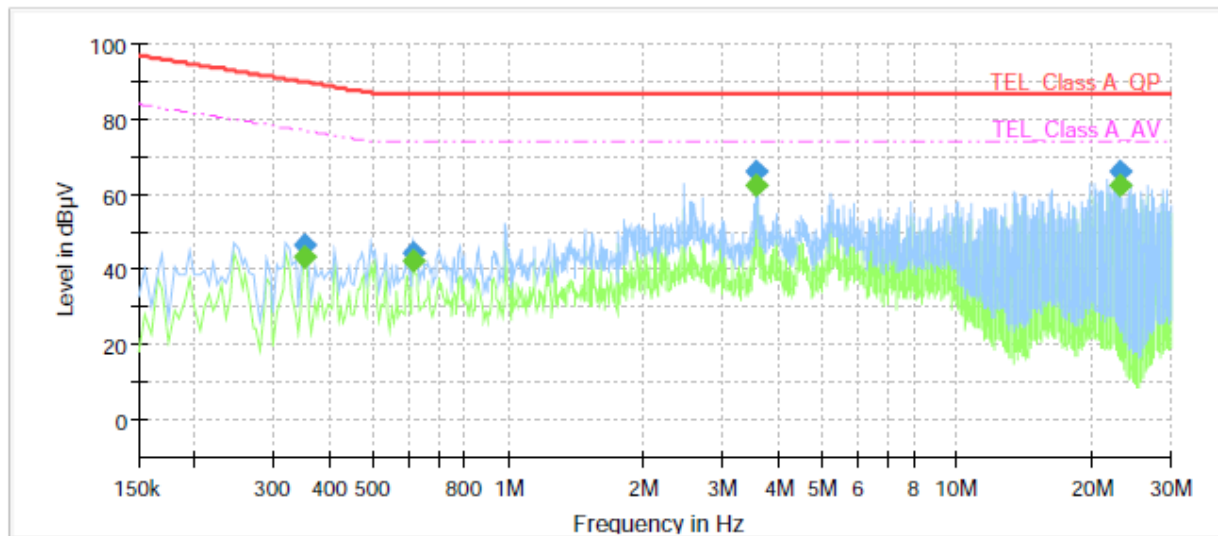
Frequency (MHz)	QuasiPeak (dBμV)	CAverage (dBμV)	Limit (dBμV)	Margin (dB)	Meas. Time (ms)	Bandwidth (kHz)	Line	Corr. (dB)
0.615000	---	41.93	74.00	32.07	1000.0	9.000	Single Line	19.7
0.615000	44.17	---	87.00	42.83	1000.0	9.000	Single Line	19.7
3.580000	---	61.65	74.00	12.35	1000.0	9.000	Single Line	19.7
3.580000	67.62	---	87.00	19.38	1000.0	9.000	Single Line	19.7
6.250000	---	56.59	74.00	17.41	1000.0	9.000	Single Line	19.4
6.250000	64.52	---	87.00	22.48	1000.0	9.000	Single Line	19.4

This report shall not be reproduced except in full, without the written approval of KES Co., Ltd.
The results shown in this test report refer only to the sample(s) tested unless otherwise stated.
The authenticity of the test report, contact kes@kes.co.kr

[100 Mbps]

Common Information

Test Description:	Telecommunication Emission
Model No.:	TNU-4041T
Mode	100 Mbps
Operator Name:	KES



Final Result

Frequency (MHz)	QuasiPeak (dBμV)	CAverage (dBμV)	Limit (dBμV)	Margin (dB)	Meas. Time (ms)	Bandwidth (kHz)	Line	Corr. (dB)
0.350000	---	43.59	76.96	33.37	1000.0	9.000	Single Line	19.5
0.350000	46.41	---	89.96	43.55	1000.0	9.000	Single Line	19.5
0.615000	---	42.23	74.00	31.77	1000.0	9.000	Single Line	19.6
0.615000	44.31	---	87.00	42.69	1000.0	9.000	Single Line	19.6
3.580000	---	62.63	74.00	11.37	1000.0	9.000	Single Line	19.6
3.580000	66.04	---	87.00	20.96	1000.0	9.000	Single Line	19.6
23.130000	---	62.55	74.00	11.45	1000.0	9.000	Single Line	20.2
23.130000	66.32	---	87.00	20.68	1000.0	9.000	Single Line	20.2

◆ Calculation

QuasiPeak[dBuV] / CAverage [dBuV] = Reading Value[dBuV] + Corr. [dB]

QuasiPeak / CAverage : The Final Value

Reading Value : Not shown in the table.

Corr. : Correction values (ISN FACTOR + (Cable Loss + Pulse Limiter FACTOR))



KES Co., Ltd.

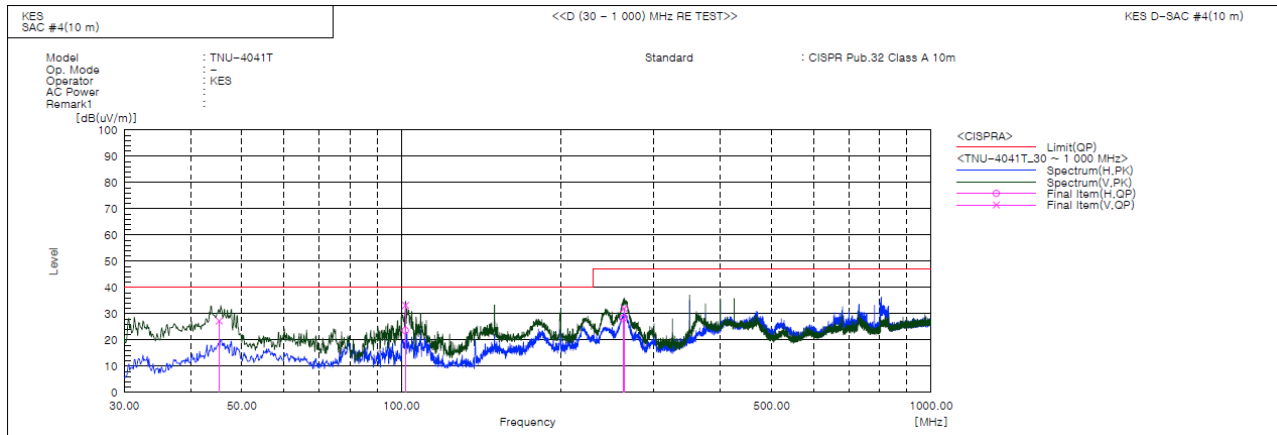
3701, 40, Simin-daero 365beon-gil,
Dongan-gu, Anyang-si, Gyeonggi-do, 14057, Korea
Tel: +82-31-425-6200 / Fax: +82-31-424-0450
www.kes.co.kr

Report No.:

KES-E1-18T0560-R1

Page (22) of (40)

Radiated Electric Field Emissions(Below 1 GHz)



Final Result

No.	Frequency [MHz]	(P)	Reading QP [dB(uV)]	c.f [dB(1/m)]	Result QP [dB(uV/m)]	Limit QP [dB(uV/m)]	Margin QP [dB]	Height [cm]	Angle [deg]	Remark
1	45.305	V	55.9	-28.6	27.3	40.0	12.7	103.0	8.0	
2	101.780	H	52.6	-29.0	23.6	40.0	16.4	372.0	198.0	
3	101.867	V	62.2	-29.0	33.2	40.0	6.8	100.0	232.0	
4	262.315	H	54.2	-25.9	28.3	47.0	18.7	400.0	80.0	
5	263.285	V	57.9	-25.9	32.0	47.0	15.0	100.0	358.0	

◆ Calculation

Corrected Amplitude [dBuV] = Amplitude[dBuV] + Correction Factor [dB]

Corrected Amplitude : The Final Value, Amplitude : Reading Value,

Correction Factor : ANT FACTOR + Cable loss

This report shall not be reproduced except in full, without the written approval of KES Co., Ltd.

The results shown in this test report refer only to the sample(s) tested unless otherwise stated.

The authenticity of the test report, contact kes@kes.co.kr



KES Co., Ltd.

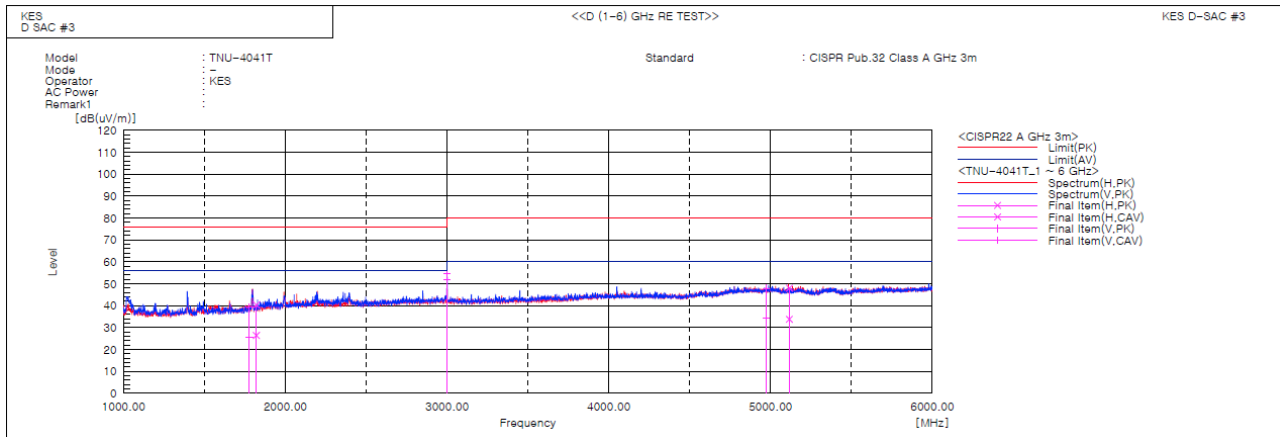
3701, 40, Simin-daero 365beon-gil,
Dongan-gu, Anyang-si, Gyeonggi-do, 14057, Korea
Tel: +82-31-425-6200 / Fax: +82-31-424-0450
www.kes.co.kr

Report No.:

KES-E1-18T0560-R1

Page (23) of (40)

Radiated Electric Field Emissions(Above 1 GHz)



Final Result

No.	Frequency [MHz]	(P)	Reading PK [dB(uV)]	Reading CAV [dB(uV)]	c.f [dB(1/m)]	Result PK [dB(uV/m)]	Result CAV [dB(uV/m)]	Limit PK [dB(uV/m)]	Limit AV [dB(uV/m)]	Margin PK [dB]	Margin CAV [dB]	Height [cm]	Angle [deg]	Remark
1	1778.984	V	42.9	29.2	-3.6	39.3	25.6	76.0	56.0	36.7	30.4	100.0	176.2	
2	1821.225	H	43.7	29.7	-3.3	40.4	26.4	76.0	56.0	35.6	29.6	100.0	109.3	
3	2999.970	V	53.4	50.4	1.5	54.9	51.9	76.0	56.0	21.1	4.1	100.0	162.1	
4	4971.373	V	39.5	26.1	8.4	47.9	34.5	80.0	60.0	32.1	25.5	100.0	79.3	
5	5116.359	H	39.7	25.4	8.4	48.1	33.8	80.0	60.0	31.9	26.2	100.0	214.8	

◆ Calculation

Result(PK/CAV) [dB(μ V/m)] = (Reading(PK/CAV)[dB(μ V)] + c.f[dB(1/m)])

Margin(PK/CAV)[dB] = Limit[dB(μ V/m)] - Result(PK/CAV) [dB(μ V/m)]

Reading(PK/CAV) : Reading value, Result(PK/CAV) : Reading value + Factor value

Limit(QP) : Limit value, c.f : (ANT Factor + Cable Loss - Preamp Factor), Margin: Margin value

This report shall not be reproduced except in full, without the written approval of KES Co., Ltd.

The results shown in this test report refer only to the sample(s) tested unless otherwise stated.

The authenticity of the test report, contact kes@kes.co.kr

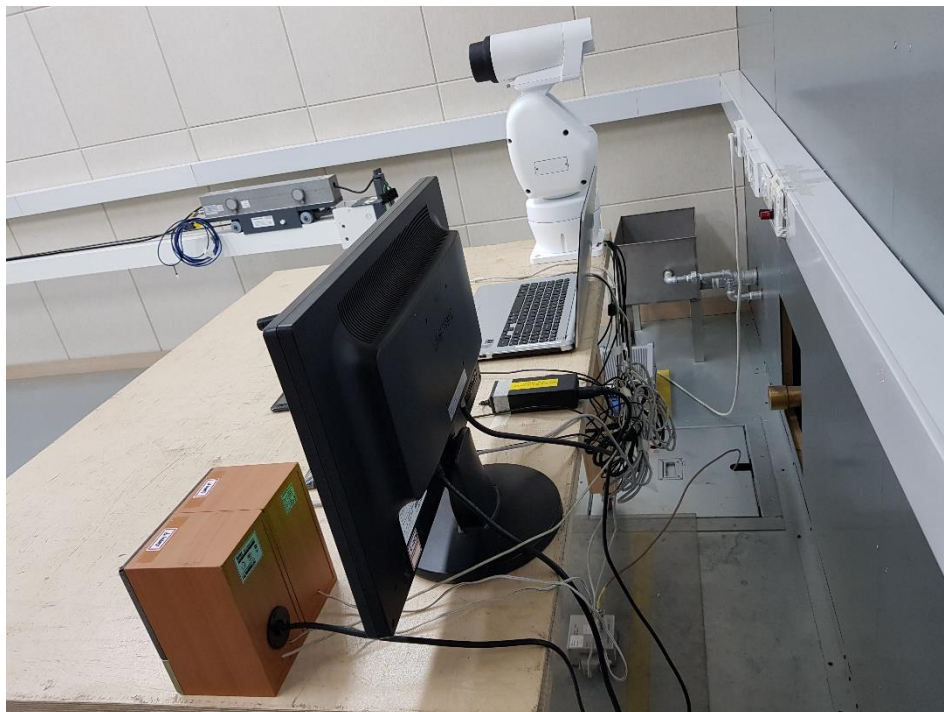
Test Setup Photos and Configuration

Conducted Voltage Emissions



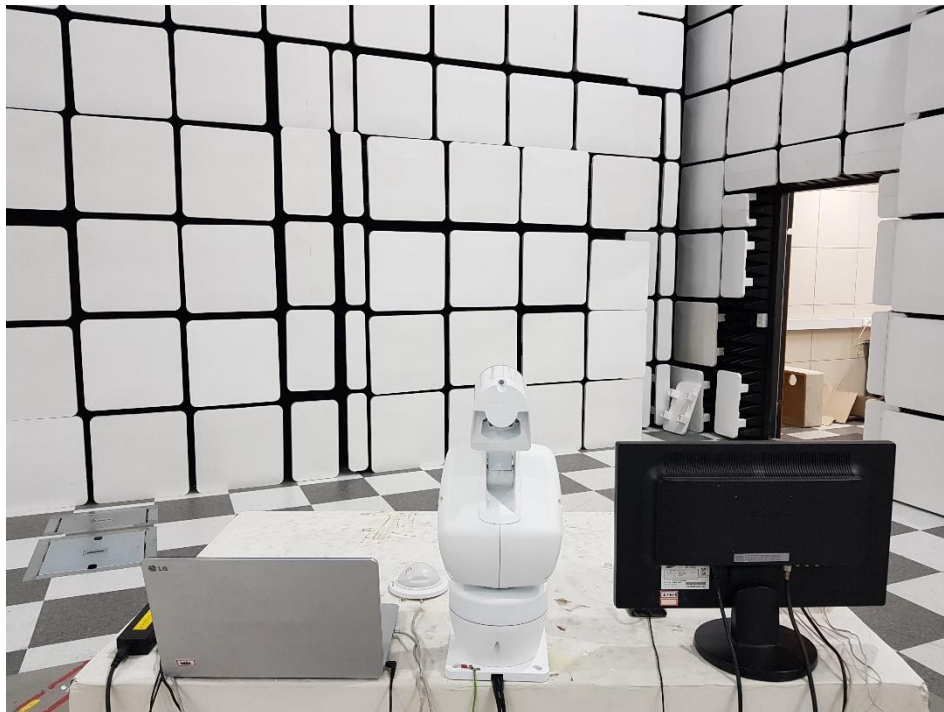
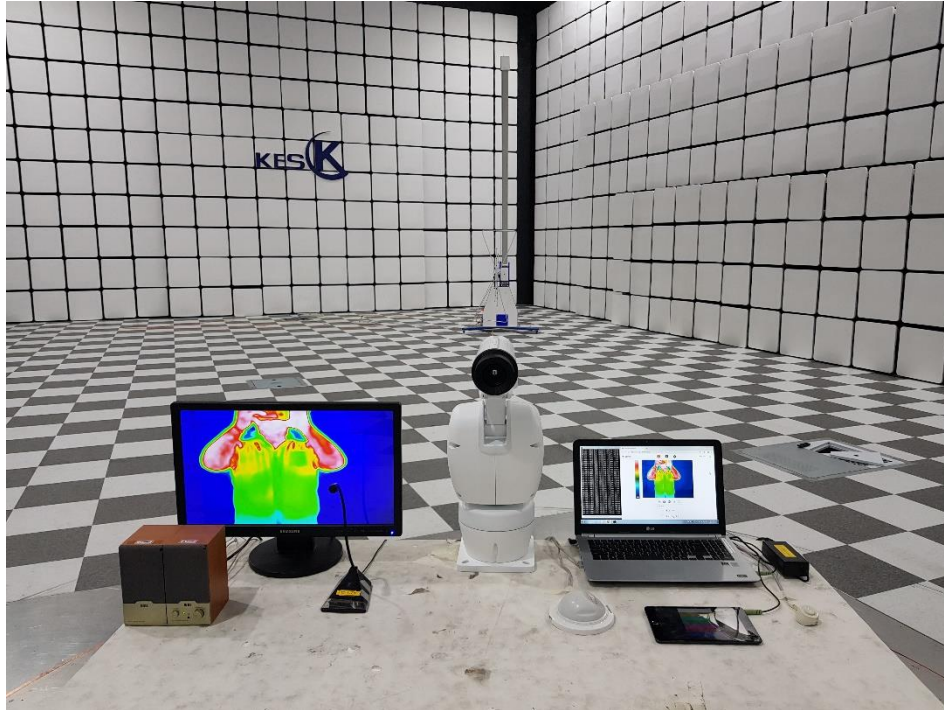
This report shall not be reproduced except in full, without the written approval of KES Co., Ltd.
The results shown in this test report refer only to the sample(s) tested unless otherwise stated.
The authenticity of the test report, contact kes@kes.co.kr

Conducted Telecommunication Emissions



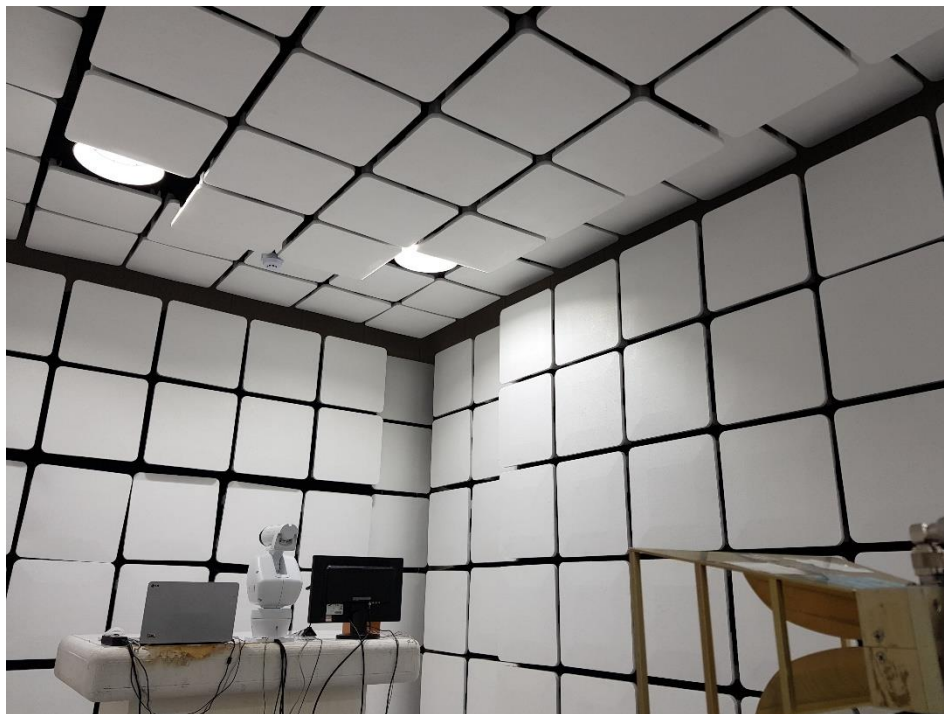
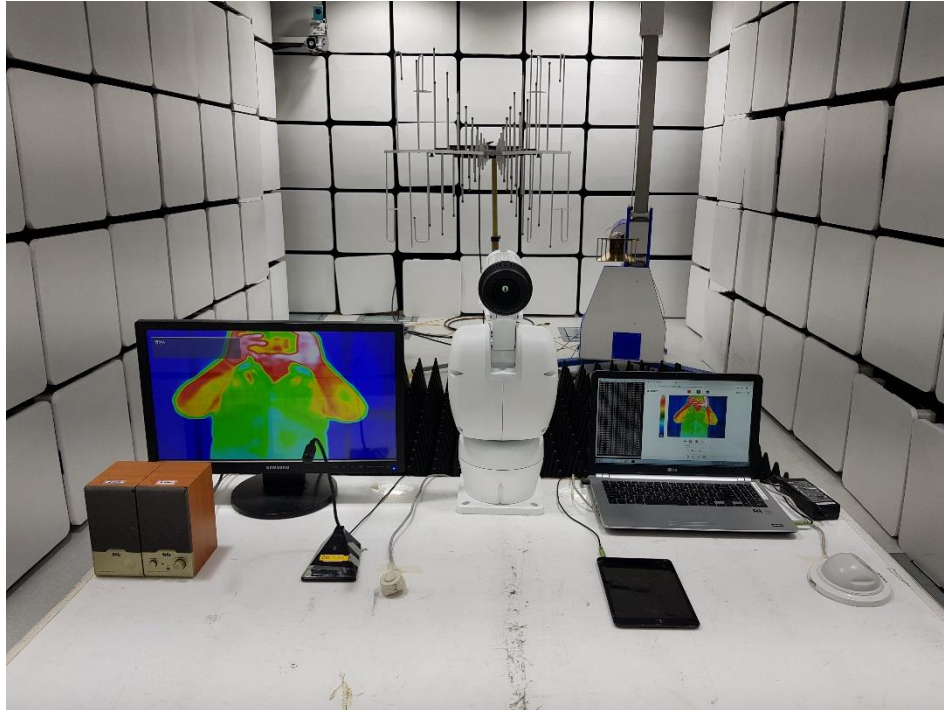
This report shall not be reproduced except in full, without the written approval of KES Co., Ltd.
The results shown in this test report refer only to the sample(s) tested unless otherwise stated.
The authenticity of the test report, contact kes@kes.co.kr

Radiated Electric Field Emissions(Below 1 GHz)



This report shall not be reproduced except in full, without the written approval of KES Co., Ltd.
The results shown in this test report refer only to the sample(s) tested unless otherwise stated.
The authenticity of the test report, contact kes@kes.co.kr

Radiated Electric Field Emissions(Above 1 GHz)



This report shall not be reproduced except in full, without the written approval of KES Co., Ltd.
The results shown in this test report refer only to the sample(s) tested unless otherwise stated.
The authenticity of the test report, contact kes@kes.co.kr

EUT External Photographs

(Top)



(Bottom)

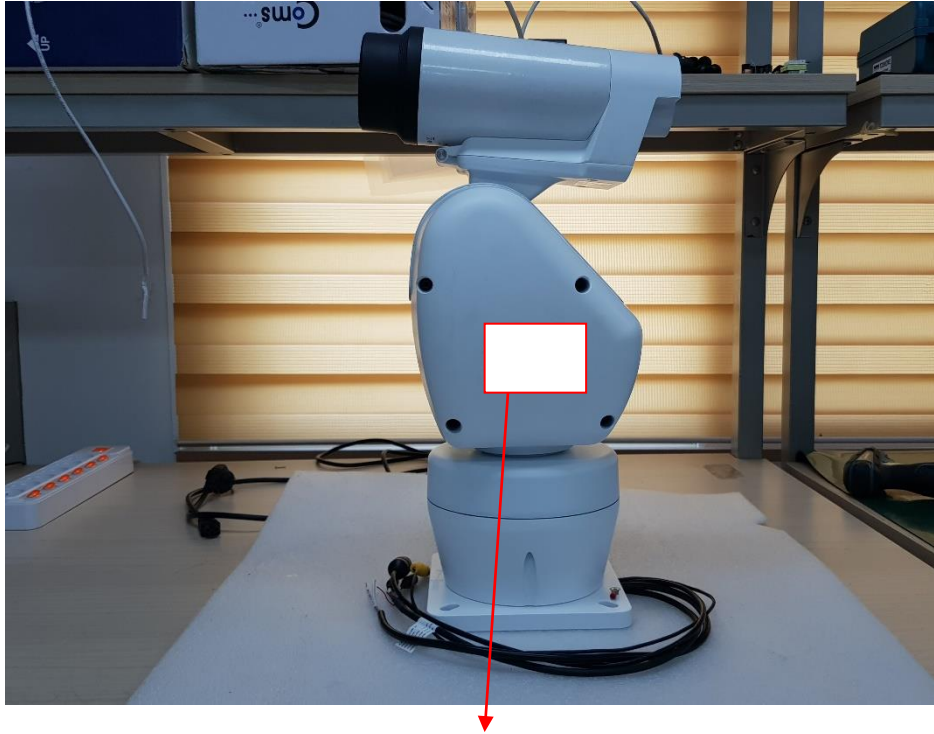


EUT Internal Photographs

(Internal View)



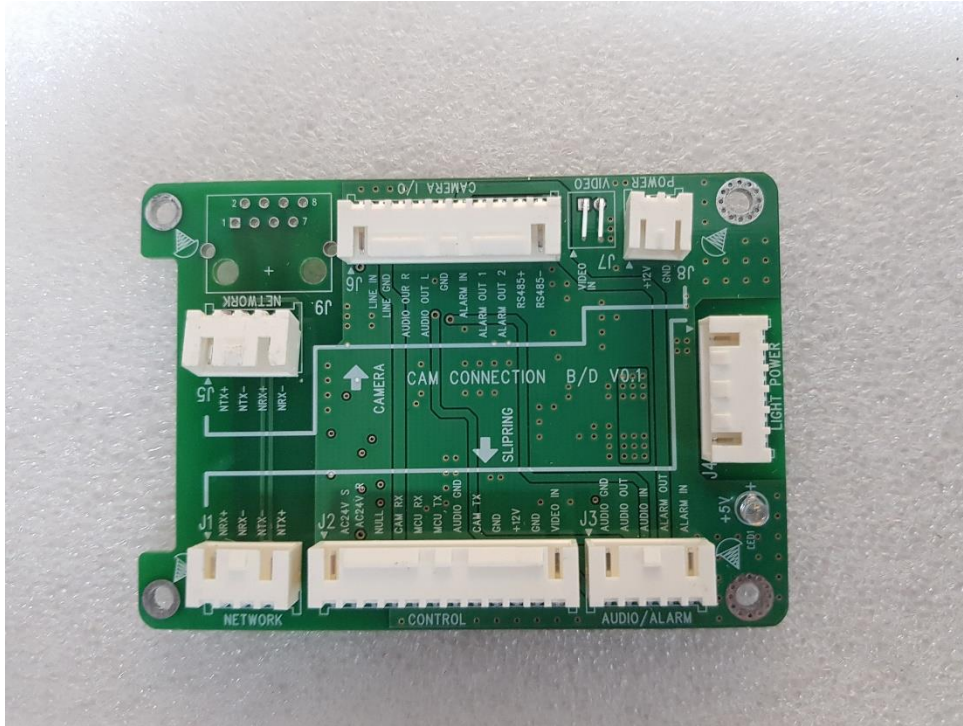
(Label)



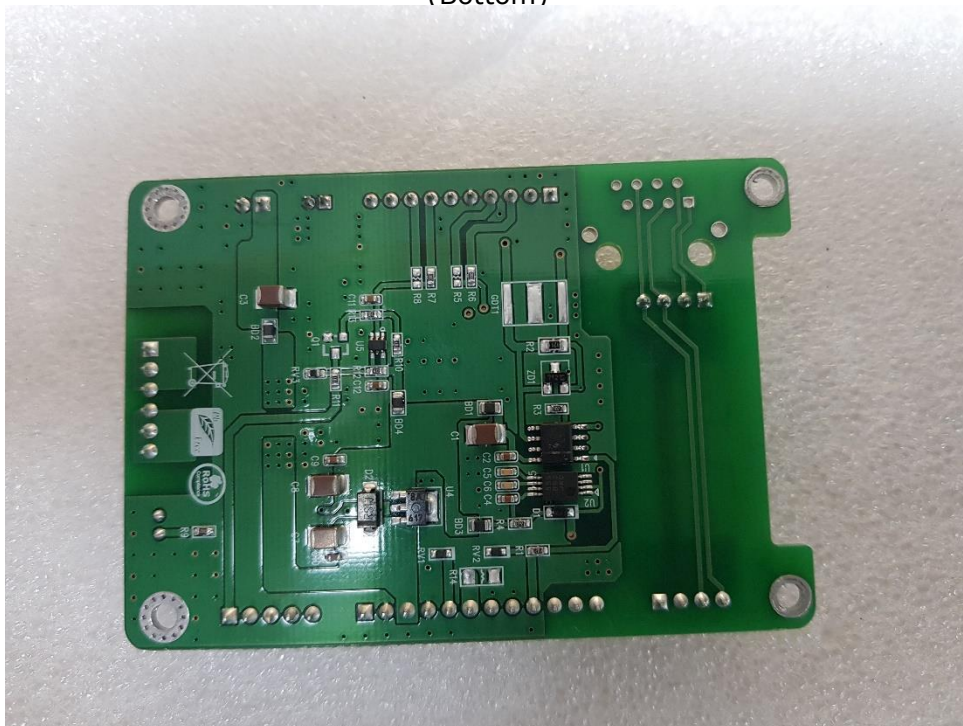
この装置は、クラスA情報技術装置です。この装置を家庭環境で使用すると電波妨害を引き起こすことがあります。この場合には使用者が適切な対策を講ずるよう要求されることがあります。

VCCI-A

EUT Internal View – CAM Connection Board (Top)

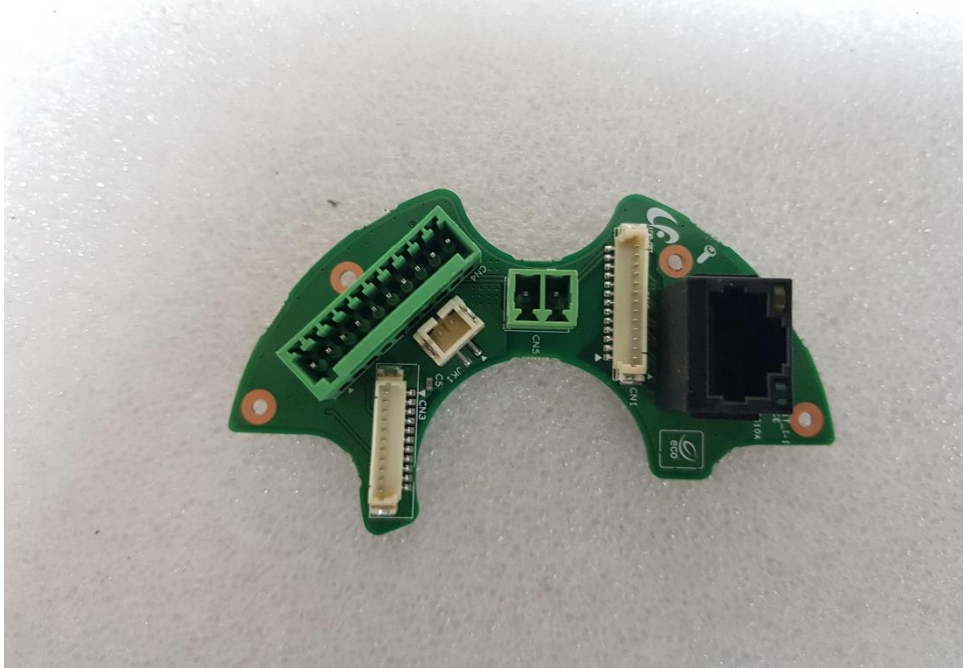


(Bottom)



This report shall not be reproduced except in full, without the written approval of KES Co., Ltd.
 The results shown in this test report refer only to the sample(s) tested unless otherwise stated.
 The authenticity of the test report, contact kes@kes.co.kr

EUT Internal View – Interface Board (Top)



(Bottom)

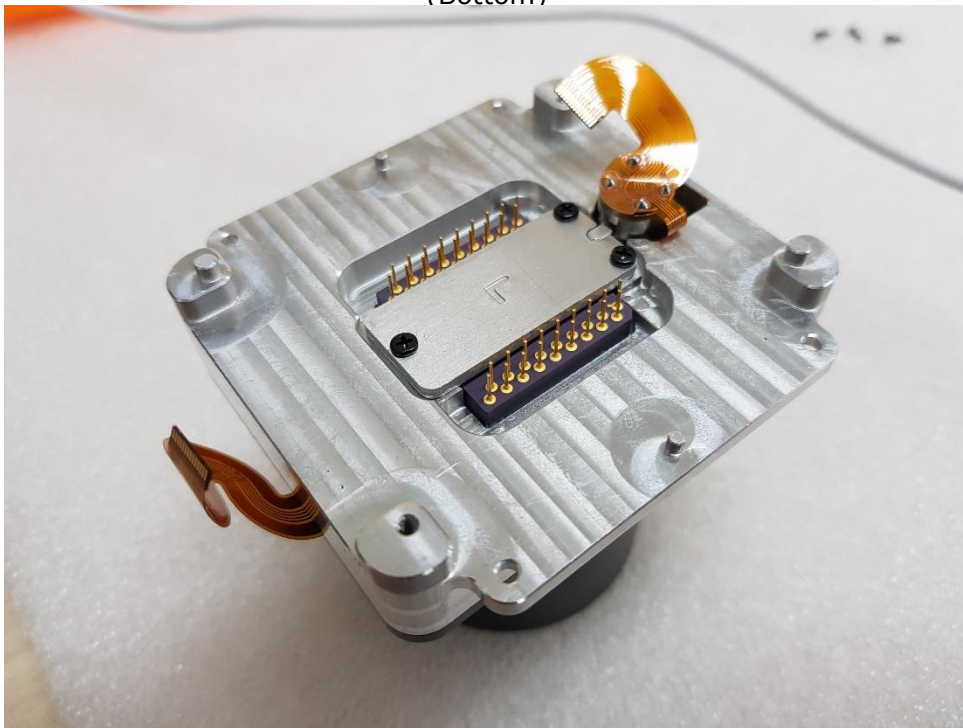


This report shall not be reproduced except in full, without the written approval of KES Co., Ltd.
The results shown in this test report refer only to the sample(s) tested unless otherwise stated.
The authenticity of the test report, contact kes@kes.co.kr

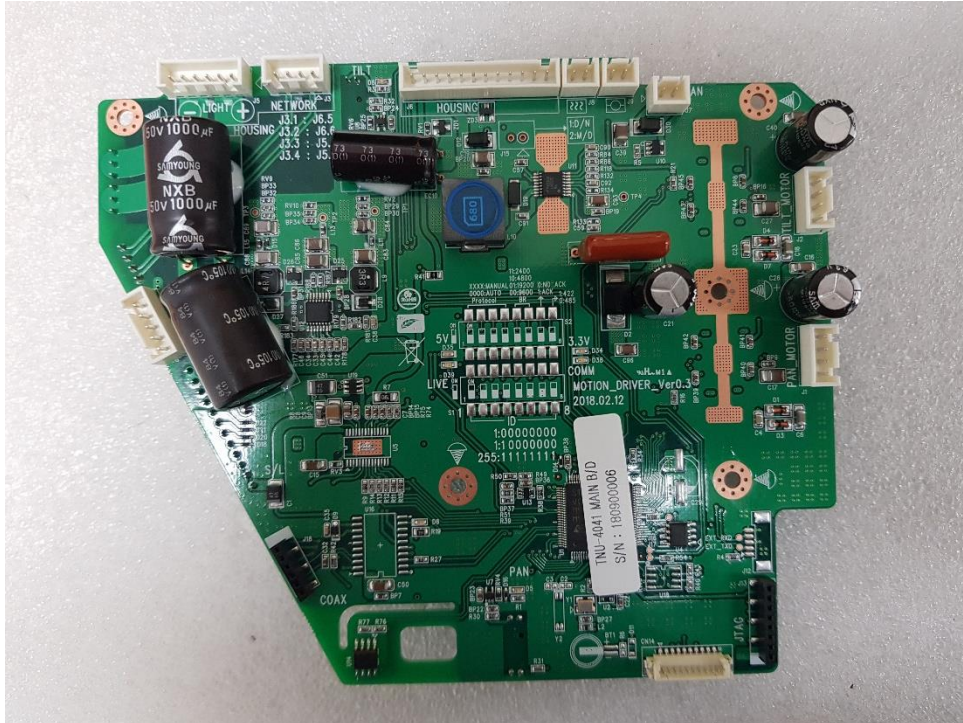
EUT Internal View – Lens (Top)



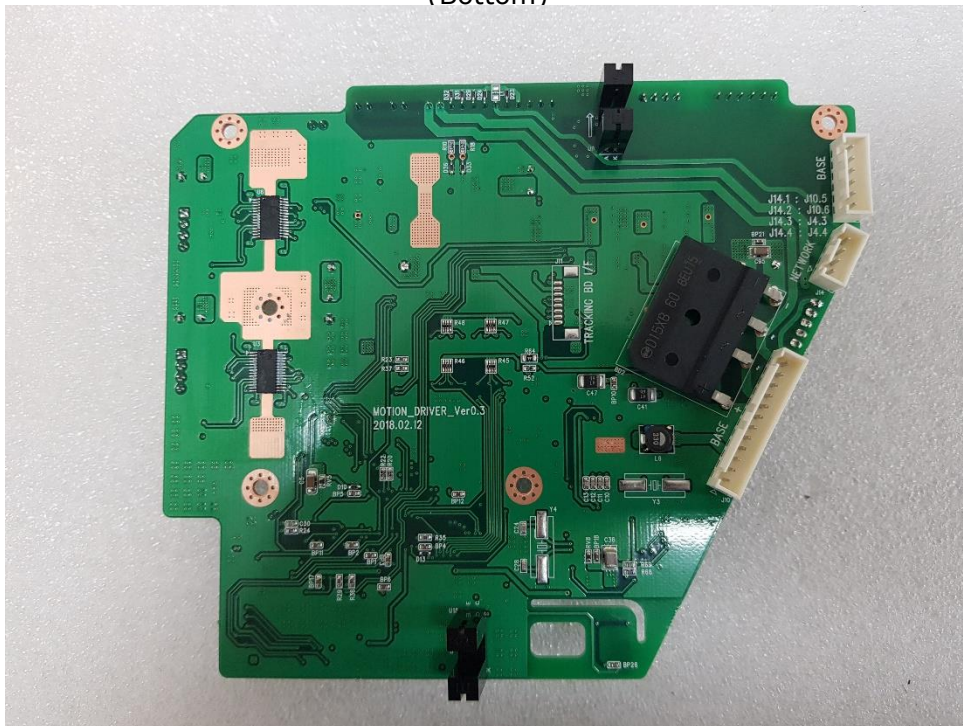
(Bottom)



EUT Internal View – Motion Driver Board (Top)

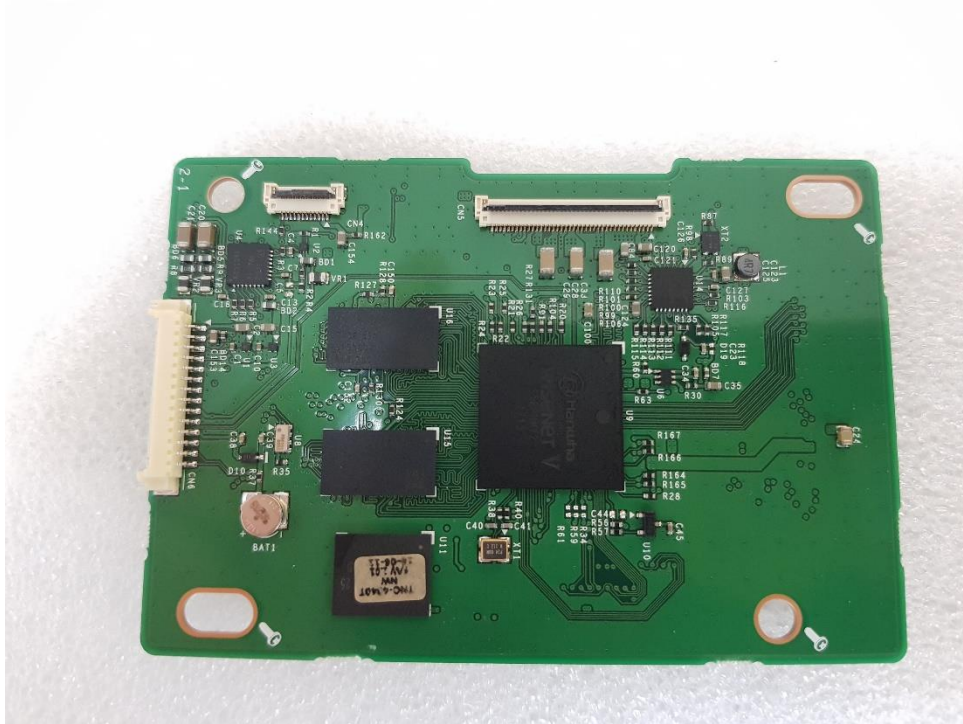


(Bottom)

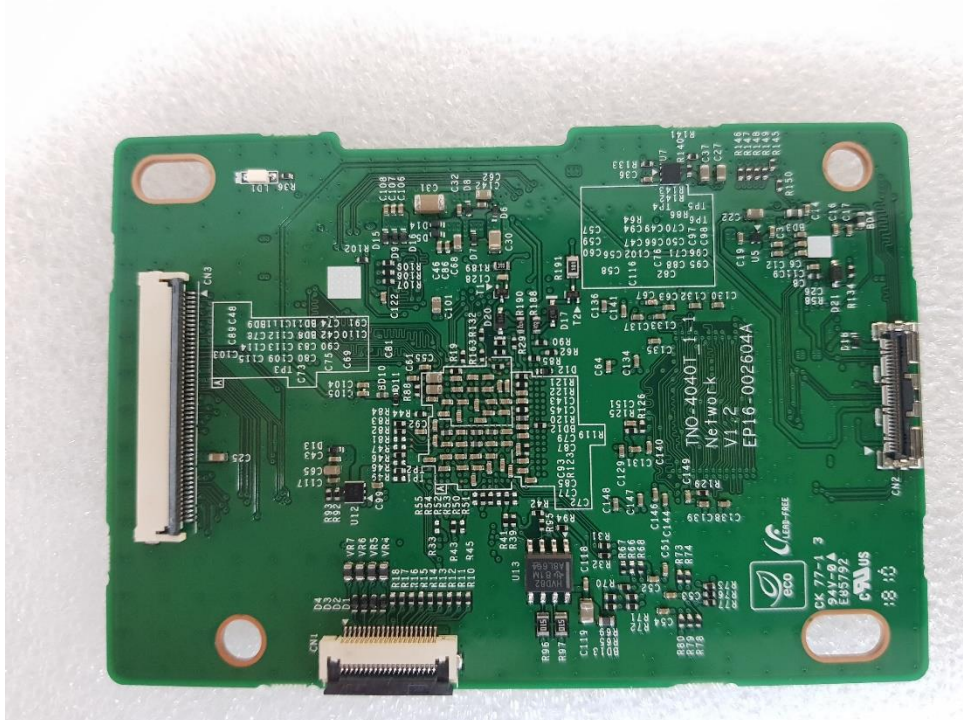


This report shall not be reproduced except in full, without the written approval of KES Co., Ltd.
 The results shown in this test report refer only to the sample(s) tested unless otherwise stated.
 The authenticity of the test report, contact kes@kes.co.kr

EUT Internal View – Network Board (Top)



(Bottom)



This report shall not be reproduced except in full, without the written approval of KES Co., Ltd.
 The results shown in this test report refer only to the sample(s) tested unless otherwise stated.
 The authenticity of the test report, contact kes@kes.co.kr

EUT Internal View – NUC Board (Top)

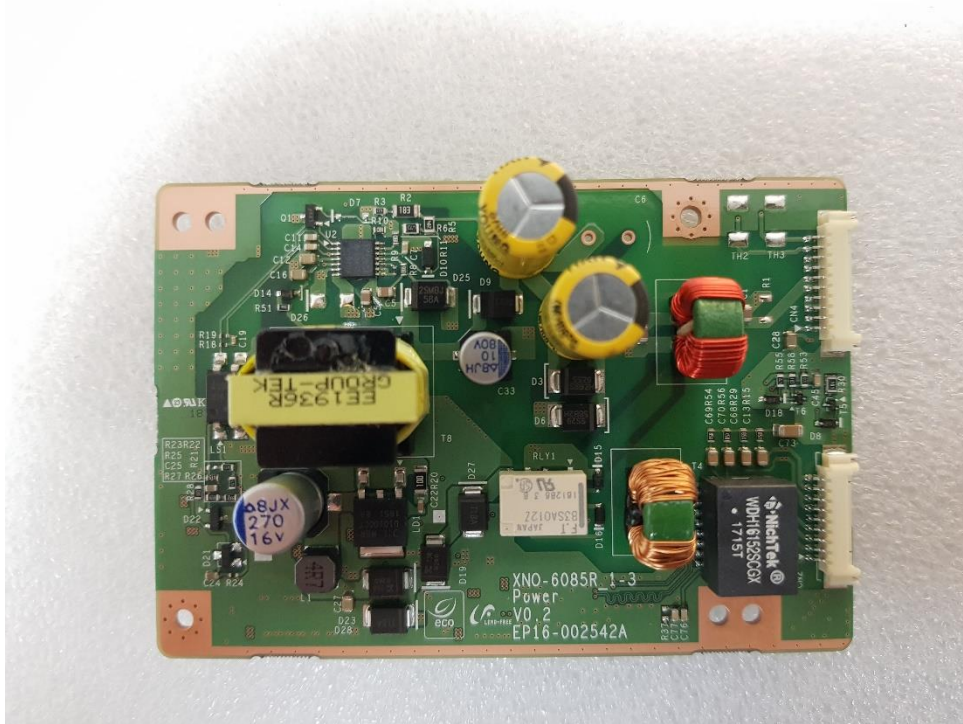


(Bottom)



This report shall not be reproduced except in full, without the written approval of KES Co., Ltd.
The results shown in this test report refer only to the sample(s) tested unless otherwise stated.
The authenticity of the test report, contact kes@kes.co.kr

EUT Internal View – Power Board (Top)

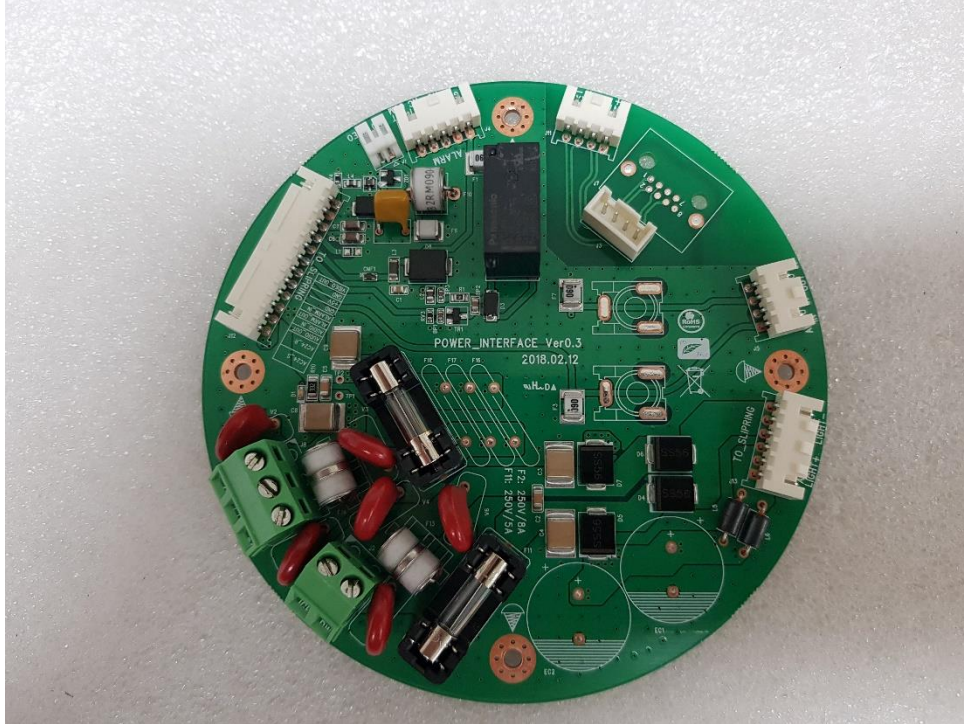


(Bottom)

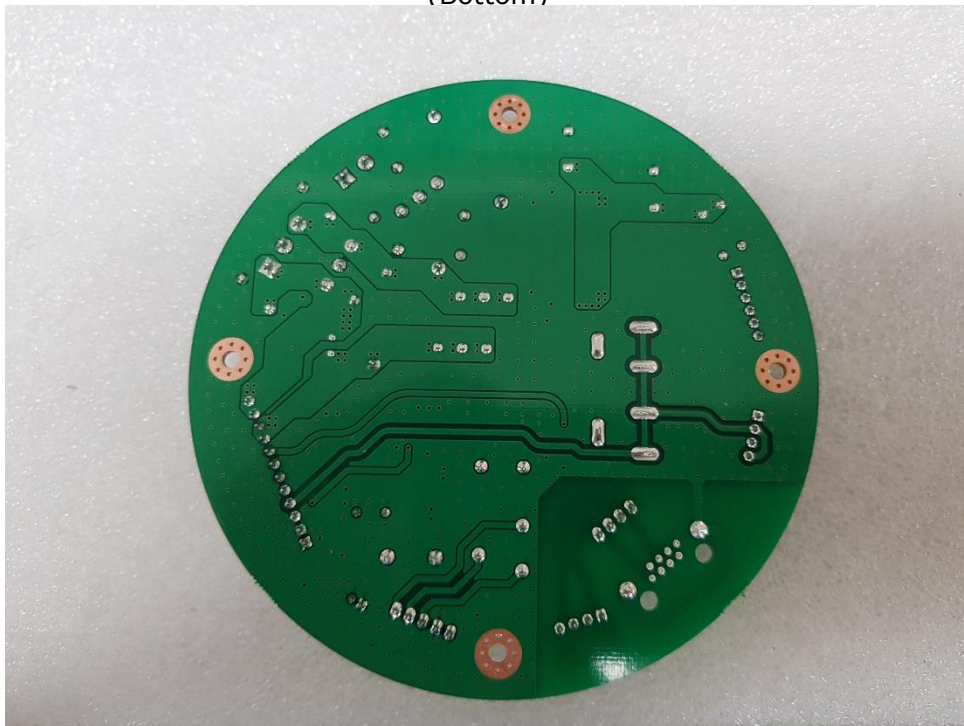


This report shall not be reproduced except in full, without the written approval of KES Co., Ltd.
The results shown in this test report refer only to the sample(s) tested unless otherwise stated.
The authenticity of the test report, contact kes@kes.co.kr

EUT Internal View – Power Interface Board (Top)



(Bottom)

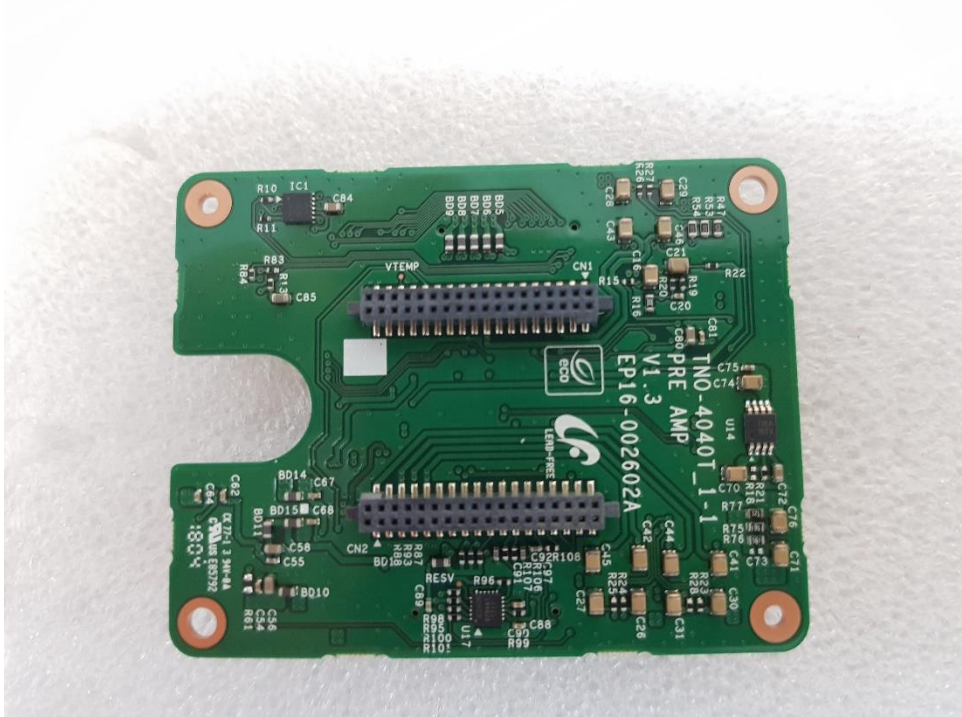


This report shall not be reproduced except in full, without the written approval of KES Co., Ltd.
The results shown in this test report refer only to the sample(s) tested unless otherwise stated.
The authenticity of the test report, contact kes@kes.co.kr

EUT Internal View – PRE AMP Board (Top)

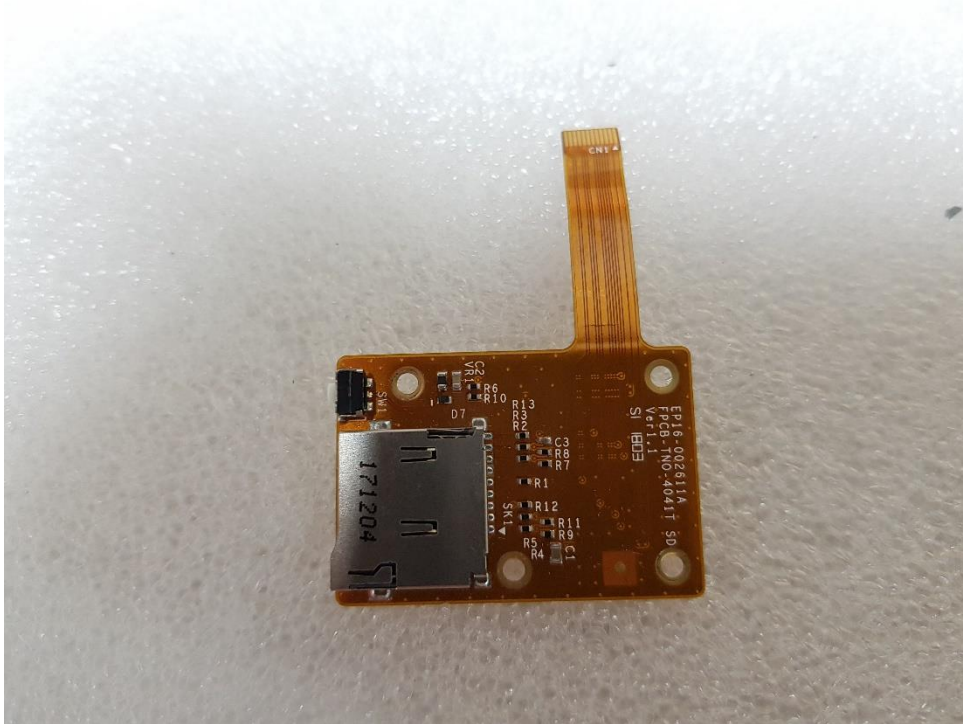


(Bottom)



This report shall not be reproduced except in full, without the written approval of KES Co., Ltd.
The results shown in this test report refer only to the sample(s) tested unless otherwise stated.
The authenticity of the test report, contact kes@kes.co.kr

EUT Internal View – SD Board (Top)



(Bottom)

