

**KES Co., Ltd.**

3701, 40, Simin-daero 365beon-gil,
Dongan-gu, Anyang-si, Gyeonggi-do, 14057, Korea
Tel: +82-31-425-6200 / Fax: +82-31-424-0450
www.kes.co.kr

Report No.:

KES-EM-21T0422-R1

Page (1) of (42)

EMC TEST REPORT For VCCI

Test Report No. : KES-EM-21T0422-R1
Date of Issue : Feb. 24, 2023
Product name : NETWORK CAMERA
Model/Type No. : XND-C7083RV
Variant Model : -
Applicant : Hanwha Vision Co., Ltd
Applicant Address : 6, Pangyo-ro 319Beon-gil, Bundang-gu, Seongnam-si,
Gyeonggi-do, Republic of Korea
Manufacturer : 1. HANWHA VISION VIETNAM COMPANY LIMITED
2. D-TECH CO.,LTD.
Manufacturer Address : 1. Lot O-2, Que Vo Industrial Zone extended area,
Nam Son commune, Bac Ninh city, Bac Ninh province, Vietnam
2. 173-25, Saneop-ro, Gwonseon-gu, Suwon-si, Gyeonggi- do,
Korea (Suwon Industrial Complex)
Date of Receipt : Apr. 01, 2021
Test date : Apr. 05, 2021
Test Results : ☒ **In Compliance** ☐ **Not in Compliance**

Tested by

Dae Soo, Kim
EMC Test Engineer

Reviewed by

Dong-Hun, Jang
EMC Technical Manager

This test report is not related to KS Q ISO/IEC 17025 and KOLAS.

This report shall not be reproduced except in full, without the written approval of KES Co., Ltd.
The results shown in this test report refer only to the sample(s) tested unless otherwise stated.
The authenticity of the test report, contact kes@kes.co.kr

**KES Co., Ltd.**

3701, 40, Simin-daero 365beon-gil,
Dongan-gu, Anyang-si, Gyeonggi-do, 14057, Korea
Tel: +82-31-425-6200 / Fax: +82-31-424-0450
www.kes.co.kr

Report No.:

KES-EM-21T0422-R1

Page (2) of (42)

REPORT REVISION HISTORY

Date	Test Report No.	Revision History
Jun. 02, 2021	KES-EM-21T0422	Issued
Feb. 24, 2023	KES-EM-21T0422-R1	Change the Applicant and manufacturer at the request of the customer

This report shall not be reproduced except in full, without the written approval of KES Co., Ltd. This document may be altered or revised by KES Co., Ltd. personnel only, and shall be noted in the revision section of the document. Any alteration of this document not carried out by KES Co., Ltd. will constitute fraud and shall nullify the document.

This report shall not be reproduced except in full, without the written approval of KES Co., Ltd.
The results shown in this test report refer only to the sample(s) tested unless otherwise stated.
The authenticity of the test report, contact kes@kes.co.kr



TABLE OF CONTENTS

1.0	General Product Description.....	4
1.1	Test Voltage & Frequency	9
1.2	Variant Model Differences	9
1.3	Device Modifications	9
1.4	Equipment Under Test.....	9
1.5	Support Equipments	9
1.6	External I/O Cabling	10
1.7	EUT Operating Mode(s)	11
1.8	Configuration.....	12
1.9	Remarks when standards applied	13
1.10	Calibration Details of Equipment Used for Measurement	13
1.11	Test Facility	13
1.12	Laboratory Accreditations and Listings	13
2.0	Test Regulations.....	14
2.1	Conducted Emissions Mains Power Ports.....	16
2.2	Conducted Emissions at Telecommunication Ports.....	17
2.3	Radiated Electric Field Emissions(Below 1 GHz)	18
2.4	Radiated Electric Field Emissions(Above 1 GHz)	19
APPENDIX A – TEST DATA.....		20
Conducted Emissions at Mains Power Ports.....		20
Conducted Emissions at Telecommunication Ports		22
Radiated Electric Field Emissions(Below 1 GHz)		24
Radiated Electric Field Emissions(Above 1 GHz).....		26
Test Setup Photos and Configuration		28
Conducted Emissions at Mains Power Ports.....		28
Conducted Emissions at Telecommunication Ports		29
Radiated Electric Field Emissions(Below 1 GHz)		31
Radiated Electric Field Emissions(Above 1 GHz).....		33
EUT External Photographs		35
EUT Internal Photographs		36



1.0 General Product Description

Main Specifications of EUT are:

Video	
Imaging Device	1/2.8" progressive CMOS
Resolution	2592x1520, 2560x1440, 1920x1080, 1280x1024, 1280x960, 1280x720, 1024x768, 800x600, 800x448, 720x576, 720x480, 640x480, 640x360, 320x240
Max. Framerate	H.265/H.264: Max. 60fps/50fps(60Hz/50Hz)(WDR off) Max. 30fps/25fps(60Hz/50Hz)(WDR on) MJPEG: Max. 30fps/25fps(60Hz/50Hz)
NETD	None
Pixel Size	None
Min. Illumination	Color: 0.038Lux(F1.4, 1/30sec, 30IRE) B/W : 0.0038Lux(F1.4, 1/30sec, 30IRE), 0Lux(IR LED on), 30/25fps Color: 0.076Lux(F1.4, 1/60sec, 30IRE) B/W : 0.0076Lux(F1.4, 1/60sec, 30IRE), 0Lux(IR LED on), 60/50fps
Video Out	USB: Micro USB Type B, 1280x720 for installation
Video Transmission Distance	None
Lens	
Focal Length (Zoom Ratio)	2.8~10mm(3.6x) motorized varifocal(TBD)
Max. Aperture Ratio	(TBD)F1.4(Wide) ~ F3.0(Tele)
Angular Field of View	(TBD) H: 109.7°(Wide) ~ 30.4°(Tele) V: 60.8°(Wide) ~ 17.8°(Tele) D: 131.3°(Wide) ~ 35.3°(Tele)
Min. Object Distance	0.5m(1.64ft)
Focus Control	Simple focus, Manual
Lens Type	DC auto iris with hall sensor (IR corrected)
Mount Type	None
Optional Lens	None
Pan / Tilt / Rotate	
Pan / Tilt / Rotate Range	TBD(Pan ±177 이상, Tilt ±75 이상, Rotate ±178 이상) * 기존 WN5 X 사양 (0°~354° / 0°~67° / 0°~355°)

This report shall not be reproduced except in full, without the written approval of KES Co., Ltd.
The results shown in this test report refer only to the sample(s) tested unless otherwise stated.
The authenticity of the test report, contact kes@kes.co.kr

**KES Co., Ltd.**

3701, 40, Simin-daero 365beon-gil,
Dongan-gu, Anyang-si, Gyeonggi-do, 14057, Korea
Tel: +82-31-425-6200 / Fax: +82-31-424-0450
www.kes.co.kr

Report No.:
KES-EM-21T0422-R1
Page (5) of (42)

Pan Range	None
Pan Speed	None
Tilt Range	None
Tilt Speed	None
Rotate Range	None
Sequence	None
Preset Accuracy	None
Operational	
Camera Title	Displayed up to 85 characters
Direction Indicator	None
Day & Night	Auto(ICR)
Backlight Compensation	BLC, HLC, WDR, SDDR
Wide Dynamic Range	extremeWDR (120dB)
Digital Noise Reduction	WiseNR II (Based on AI engine), SSNR V
Digital Image Stabilization	Support (built-in gyro sensor)
Defog	Support
Motion Detection	8ea, 8point Polygonal zones
Privacy Masking	32ea, 4point Quadrangle zones - Color : Gray, Green, Red, Blue, Black, White - Mosaic
Gain Control	Support
White Balance	ATW / Narrow ATW / AWC / Manual / Indoor / Outdoor
LDC	Support (Fill/stretch mode)
Electronic Shutter Speed	Minimum / Maximum / Anti flicker (2~1/12,000sec) Auto prefer shutter control (Based on AI engine)
Digital PTZ	Support
Video Rotation	Flip, Mirror, Hallway view (90°/270°)
Analytics	- Analytics events based on AI engine (NPU) : Object detection (Person/Face/Vehicle(car/truck/bus/bicycle/bike)/Licence plate), IVA (Virtual line/Area, Enter/Exit, Loitering, direction, intrusion) - Analytics events : Defocus detection, Motion detection, Tampering, Fog detection, Audio detection, Sound classification, Shock detection, Appear/Disappear
Business Intelligence	Based on AI engine (NPU) : People counting, Queue management, Heatmap
Serial Interface	None

This report shall not be reproduced except in full, without the written approval of KES Co., Ltd.
The results shown in this test report refer only to the sample(s) tested unless otherwise stated.
The authenticity of the test report, contact kes@kes.co.kr

**KES Co., Ltd.**

3701, 40, Simin-daero 365beon-gil,
Dongan-gu, Anyang-si, Gyeonggi-do, 14057, Korea
Tel: +82-31-425-6200 / Fax: +82-31-424-0450
www.kes.co.kr

Report No.:

KES-EM-21T0422-R1

Page (6) of (42)

Alarm I/O	2 configurable I/O ports
Alarm Triggers	Analytics, Network disconnect, Alarm input, App event, Time schedule
Alarm Events	When alarm trigger occurred <ul style="list-style-type: none">- File upload(image) : e-mail/FTP- File upload(video clip) : FTP- Notification : e-mail- Recording : SD/SDHC/SDXC or NAS recording at event triggers- Alarm output- Handover(PTZ preset, Send message by HTTP/HTTPS/TCP)- Audio clip playback- PTZ preset
Audio In	Selectable(mic in/line in) Supply voltage: 2.5VDC(4mA), Input impedance: 2K Ohm
Audio Out	Line out, Max.output level: 1Vrms
IR Viewable Length	WiseIR40m(131.23ft)(TBD)
IR Illuminator (Optional)	None
Water Removal	None
Auto Tracking	None
Coaxial Protocol	None
Color Palettes	None
Radiometry	
Temperature Detect Range	None
Temperature Accuracy	None
Temperature Detection	None
Additional	None
Network	
Ethernet	Metal shielded RJ-45(10/100BASE-T)
Video Compression	H.265/H.264: Main/High, MJPEG
Audio Compression	G.711 u-law /G.726 Selectable G.726(ADPCM) 8KHz, G.711 8KHz G.726: 16Kbps, 24Kbps, 32Kbps, 40Kbps AAC-LC: 48Kbps at 16KHz
Smart Codec	Manual(Sea area), WiseStreamII, WiseStreamIII(Based on AI engine)
Video Quality Adjustment	H.264/H.265: Target bitrate level control

This report shall not be reproduced except in full, without the written approval of KES Co., Ltd.
The results shown in this test report refer only to the sample(s) tested unless otherwise stated.
The authenticity of the test report, contact kes@kes.co.kr

**KES Co., Ltd.**

3701, 40, Simin-daero 365beon-gil,
Dongan-gu, Anyang-si, Gyeonggi-do, 14057, Korea
Tel: +82-31-425-6200 / Fax: +82-31-424-0450
www.kes.co.kr

Report No.:

KES-EM-21T0422-R1

Page (7) of (42)

	MJPEG: Target bitrate level control
Bitrate Control	H.264/H.265: CBR or VBR MJPEG: VBR
Streaming	Unicast(20 users) / Multicast Multiple streaming(Up to 10 profiles, 3 virtual channel support)
Protocol	IPv4, IPv6, TCP/IP, UDP/IP, RTP(UDP), RTP(TCP), RTCP, RTSP, NTP, HTTP, HTTPS, SSL/TLS, DHCP, FTP, SMTP, ICMP, IGMP, SNMPv1/v2c/v3(MIB-2), ARP, DNS, DDNS, QoS, UPnP, Bonjour, LLDP, SRTP (TCP, UDP Unicast)
Security	HTTPS(SSL) Login Authentication Digest Login Authentication IP Address Filtering User access log 802.1X Authentication(EAP-TLS, EAP-LEAP, EAP-PEAP MSCHAPv2) Device Certificate(Hanwha Techwin Root CA, pre-installed) Secure by default certificate HTPM (Hanwha Trusted platform module) Secure OS/Boot/Storage, Verify firmware forgery
Application Programming Interface	ONVIF Profile S/G/T SUNAPI(HTTP API) Wisenet open platform
General	
Webpage Language	English, Korean, Chinese, French, Italian, Spanish, German, Japanese, Russian, Swedish,, Portuguese, Czech, Polish, Turkish, Dutch, Greek, Hungarian
Web Viewer	None
Edge Storage	Micro SD/SDHC/SDXC 1slot 512GB
Memory	2GB RAM, 512MB Flash
Environmental & Electrical	
Operating Temperature / Humidity	-10 °C ~ 50 °C(14°F ~ +122°F) * Maximum temperature : +55°C (intermittent) less than 95% RH(non-condensing) Humidity control /w GORE vent
Storage Temperature / Humidity	-50°C ~ +60°C(-58°F ~ +140°F) / Less than 90% RH
Certification	IP52/IK08(TBD)

This report shall not be reproduced except in full, without the written approval of KES Co., Ltd.
The results shown in this test report refer only to the sample(s) tested unless otherwise stated.
The authenticity of the test report, contact kes@kes.co.kr

**KES Co., Ltd.**

3701, 40, Simin-daero 365beon-gil,
Dongan-gu, Anyang-si, Gyeonggi-do, 14057, Korea
Tel: +82-31-425-6200 / Fax: +82-31-424-0450
www.kes.co.kr

Report No.:

KES-EM-21T0422-R1

Page (8) of (42)

Input Voltage	PoE(IEEE802.3af, Class3), 12VDC
Power Consumption	TBD
Mechanical	
Color / Material	White / Aluminum + PC Hard-coated dome bubble
RAL Code	RAL9003
Product Dimensions / Weight	Ø160x118mm(Ø6.30x4.65"), 1350g(2.98 lb) (TBD)
Compatible Conduit hole / Gangbox	1/2" (M20) single, double, 4" octagon, 4" square
Hanging Mount (Dome)	SBP-167HMW
Skin Cover (Dome)	None
Weather Cap (Dome)	None
Power Module	None
Backbox	None
DORI (EN62676-4 standard)	
Detect (25PPM/ 8PPF)	Wide: 36.5m(119.76ft) / Tele: 183.8m(603.05ft)
Observe (63PPM/ 19PPF)	Wide: 14.6m(47.9ft) / Tele: 73.5m(241.22ft)
Recognize (125PPM/ 38PPF)	Wide: 7.3m(23.95ft) / Tele: 36.8m(120.61ft)
Identify (250PPM/ 76PPF)	Wide: 3.7m(11.98ft) / Tele: 18.4m(60.31ft)

This report shall not be reproduced except in full, without the written approval of KES Co., Ltd.
The results shown in this test report refer only to the sample(s) tested unless otherwise stated.
The authenticity of the test report, contact kes@kes.co.kr



1.1 Test Voltage & Frequency

Unless indicated otherwise on the individual data sheet or test results, the test voltage and frequency was as indicated below.

☒ AC 100 V, 60 Hz ☒ PoE

1.2 Variant Model Differences

Not applicable

1.3 Device Modifications

Not applicable

1.4 Equipment Under Test

Description	Model Number	Serial Number	Manufacturer	Remarks
NETWORK CAMERA	XND-C7083RV	-	HANWHA VISION VIETNAM COMPANY LIMITED	EUT

1.5 Support Equipments

Description	Model Number	Serial Number	Manufacturer	Remarks
Adapter	FSP060-DIBAN2	H00000669	Zhonghan Electronics (Shenzhen) Co., Ltd.	-
PoE INJECTOR	PSE156G	3115156G000013	UBIQNET	-
Notebook	HSN-Q07C	5CD8367KND	HP	-
Notebook Adapter	HSTNN-CA40	WFTKU0ERLB4QC H	HP	-
Alarm	SIP-1201DD D0	-	SAMSUNG TECHWIN CO., LTD.	-
Button alarm	-	-	-	-
Smartphone	SM-N950	-	SAMSUNG	-
HEADSET	K550	-	Britz®	-
MIC	MP1000	-	-	-
Micro SD Card	-	-	SanDisk	16 GB



1.6 External I/O Cabling

■ DC Mode

Start		END		Cable Spec.	
Description	I/O Port	Description	I/O Port	Length	Shield
NETWORK CAMERA (EUT)	RJ-45	Notebook	RJ-45	3.5	U
	Alarm OUT	Alarm	Alarm IN	3.0	U
	Alarm IN	Button alarm	Alarm OUT	3.0	U
	Audio OUT	HEADSET	Audio OUT	1.4	U
	Audio IN	MIC	Audio IN	1.4	U
	SLOT	Micro SD Card	SLOT	-	-
Notebook	3.5 mm	Smartphone	3.5 mm	0.5	U

* Unshielded=U, Shielded=S

■ PoE Mode

Start		END		Cable Spec.	
Description	I/O Port	Description	I/O Port	Length	Shield
NETWORK CAMERA (EUT)	RJ-45 (PoE)	PoE INJECTOR	RJ-45 (PoE)	3.5	U
	Alarm OUT	Alarm	Alarm IN	3.0	U
	Alarm IN	Button alarm	Alarm OUT	3.0	U
	Audio OUT	HEADSET	Audio OUT	1.4	U
	Audio IN	MIC	Audio IN	1.4	U
	SLOT	Micro SD Card	SLOT	-	-
Notebook	RJ-45 (LAN)	PoE INJECTOR	RJ-45 (LAN)	1.5	U
	3.5 mm	Smartphone	3.5 mm	0.5	U

* Unshielded=U, Shielded=S

**KES Co., Ltd.**

3701, 40, Simin-daero 365beon-gil,
Dongan-gu, Anyang-si, Gyeonggi-do, 14057, Korea
Tel: +82-31-425-6200 / Fax: +82-31-424-0450
www.kes.co.kr

Report No.:

KES-EM-21T0422-R1

Page (11) of (42)

1.7 EUT Operating Mode(s)

Test Mode	operating
OP	the test was conducted while checking the camera video output from the laptop and making sure that they operate normally while performing a ping test.

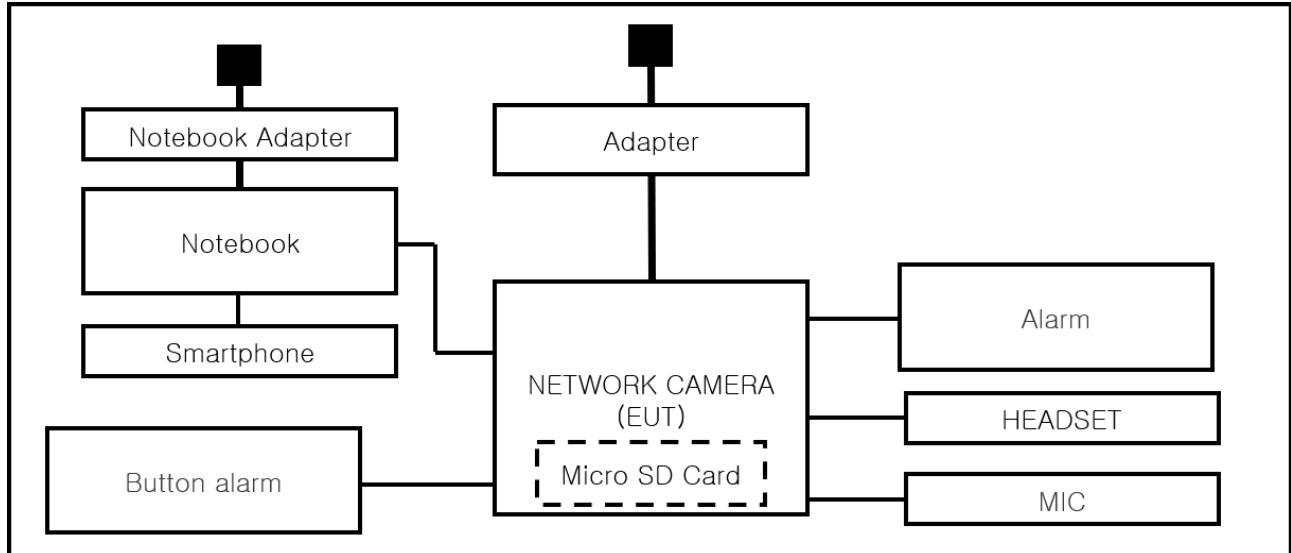
EUT Test operating S/W		
Name	Version	Manufacture Company
Web Viewer	-	Hanwha Vision Co., Ltd

This report shall not be reproduced except in full, without the written approval of KES Co., Ltd.
The results shown in this test report refer only to the sample(s) tested unless otherwise stated.
The authenticity of the test report, contact kes@kes.co.kr

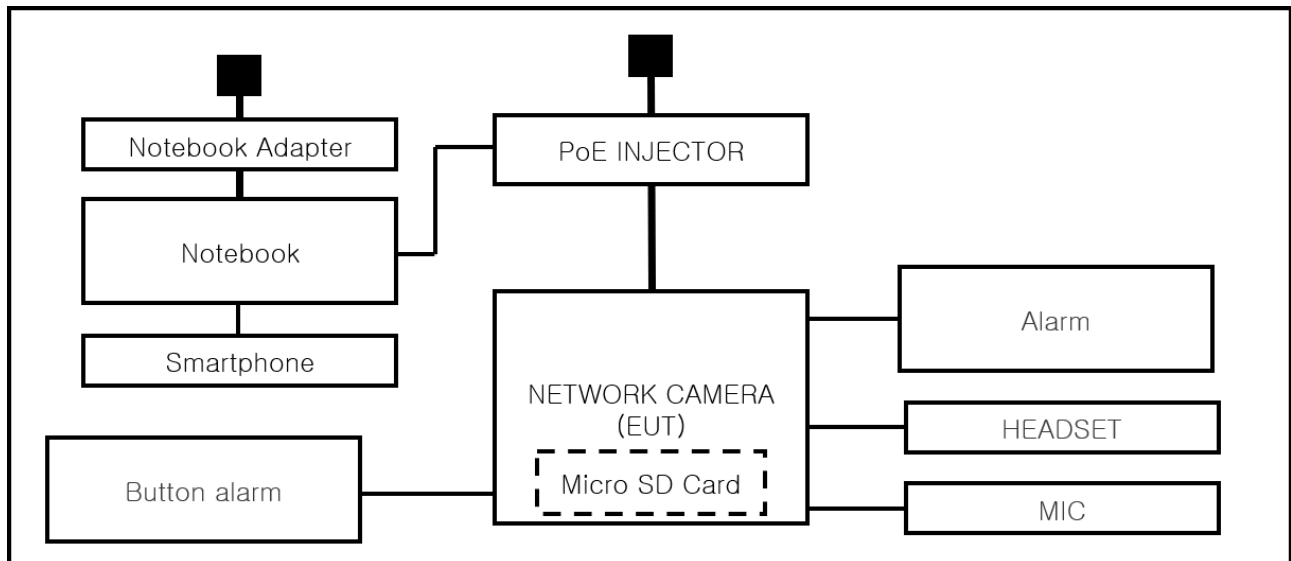
1.8 Configuration

■ AC Main
 □ DC Main

■ DC Mode



■ PoE Mode



1.9 Remarks when standards applied

USB port are for administrator use and are excluded from testing.







1.10 Calibration Details of Equipment Used for Measurement

Test equipment and test accessories are calibrated on regular basis. The maximum time between calibrations is one year or what is recommended by the manufacturer, whichever is less.

1.11 Test Facility

The measurement facility is located at 473-21, Gayeo-ro, Yeosu-si, Gyeonggi-do, 12658, Korea, Republic of. The sites are constructed in conformance with the requirements of ANSI C63.4a-2017 and CISPR 16-1-4:2019

1.12 Laboratory Accreditations and Listings

Country	Agency	Scope of Accreditation	Logo
KOREA	RRA	EMI (3 m & 10 m Semi-Anechoic Chamber and conducted test site) EMS (ESD, RS, EFT/Burst, Surge, CS, Magnetic, Dips and interruptions)	 KR0100
International	KOLAS	EMI (3 m & 10 m Semi-Anechoic Chamber and conducted test site) EMS (ESD, RS, EFT/Burst, Surge, CS, Magnetic, Dips and interruptions)	 KT489
USA	FCC	3 m & 10 m Semi-Anechoic Chamber Conducted test site to perform FCC Part 15/18 measurements.	 KR0100
Canada	ISED	3 m & 10 m Semi-Anechoic Chamber and Conducted test site	 23298
JAPAN	VCCI	EMI (3 m & 10 m Semi-Anechoic Chamber and conducted test site)	 C-20136, T-20137, R-20181, G-20176
Europe	TÜV SÜD	EMI (3 m & 10 m Semi-Anechoic Chamber and conducted test site) EMS (ESD, RS, EFT/Burst, Surge, CS, Magnetic, Dips and interruptions)	 CARAT 001633 0004

2.0 Test Regulations

The emissions tests were performed according to following regulations:

☐ **EMC – Directive 2014/30/EU**

☐ EN 61000-6-3:2011

☐ EN 61000-6-1:2007

☐ EN 61000-6-4:2007 +A1:2011

☐ EN 61000-6-2:2005

☐ EN 55011:2007 +A1:2010

☐ Group 1
☐ Class A

☐ Group 2
☐ Class B

☐ EN 55014-1:2006 +A2:2011

☐ EN 55014-2:1997 +A2:2008

☐ EN 55015:2013

☐ EN 61547 :2009

☐ EN 55032:2015

☐ Class A

☐ Class B

☐ EN 55024:2010 +A1:2015

☐ EN 50130-4:2011 +A1:2014

☐ EN 61000-3-2:2014

☐ EN 61000-3-3:2013

☐ EN 61326-1:2013



KES Co., Ltd.

3701, 40, Simin-daero 365beon-gil,
Dongan-gu, Anyang-si, Gyeonggi-do, 14057, Korea
Tel: +82-31-425-6200 / Fax: +82-31-424-0450
www.kes.co.kr

Report No.:
KES-EM-21T0422-R1
Page (15) of (42)

-
- | | | |
|---|---|----------------------------------|
| <input checked="" type="checkbox"/> VCCI-CISPR 32:2016 | <input checked="" type="checkbox"/> Class A | <input type="checkbox"/> Class B |
| <input type="checkbox"/> AS/NZS CISPR32:2015 | <input type="checkbox"/> Class A | <input type="checkbox"/> Class B |
| <input type="checkbox"/> 47 CFR Part 15, Subpart B | | |
| <input type="checkbox"/> CISPR 22:2009 +A1:2010 | <input type="checkbox"/> Class A | <input type="checkbox"/> Class B |
| <input type="checkbox"/> ANSI C63.4-2009 | | |
| <input type="checkbox"/> IC Regulation ICES-003 : 2016 | | |
| <input type="checkbox"/> CAN/CSA CISPR 22-10 | <input type="checkbox"/> Class A | <input type="checkbox"/> Class B |
| <input type="checkbox"/> ANSI C63.4-2014 | | |
|
<input type="checkbox"/> RE- Directive 2014/53/EU | | |
| <input type="checkbox"/> EN 301 489-1 V1.9.2 | | |
| <input type="checkbox"/> Equipment for fixed use | | |
| <input type="checkbox"/> Equipment for vehicular use | | |
| <input type="checkbox"/> Equipment for portable use | | |
| <input type="checkbox"/> EN 301 489-3 V1.6.1 | | |
| <input type="checkbox"/> EN 301 489-17 V2.2.1 | | |
| <input type="checkbox"/> EN 60945:2002 | | |

This report shall not be reproduced except in full, without the written approval of KES Co., Ltd.
The results shown in this test report refer only to the sample(s) tested unless otherwise stated.
The authenticity of the test report, contact kes@kes.co.kr



2.1 Conducted Emissions Mains Power Ports

Test Date

Apr. 05, 2021

Test Location

Electro wave Shieldroom #6

Test Equipment

Used	Description	Model Number	Manufacturer	Serial Number	Cal. Due
<input checked="" type="checkbox"/>	EMI Test S/W	EMC32	R & S	9.12.00	-
<input checked="" type="checkbox"/>	EMI TEST RECEIVER	ESR3	R & S	101783	01, 15, 2022
<input checked="" type="checkbox"/>	LISN	ENV216	R & S	101787	12, 29, 2021
<input checked="" type="checkbox"/>	LISN	ESH2-Z5	R & S	100450	12, 29, 2021
<input checked="" type="checkbox"/>	PULSE LIMITER	ESH3-Z2	R & S	101915	12, 29, 2021

Test Conditions

Temperature: (24,1 ± 0,2) °C

Relative Humidity: (45,4 ± 0,2) % R.H.

Frequency Range of Measurement

150 kHz to 30 MHz

Instrument Settings

IF Band Width: 9 kHz

Test Results

The requirements are:

- ☒ PASS
☐ NOT PASS
☐ NOT APPLICABLE

Remarks

See Appendix A for test data.

2.2 Conducted Emissions at Telecommunication Ports

Test Date

Apr. 05, 2021

Test Location

Electro wave Shieldroom #6

Test Equipment

Used	Description	Model Number	Manufacturer	Serial Number	Cal. Due
<input checked="" type="checkbox"/>	EMI Test S/W	EMC32	R & S	9.12.00	-
<input checked="" type="checkbox"/>	EMI TEST RECEIVER	ESR3	R & S	101783	01, 15, 2022
<input checked="" type="checkbox"/>	LISN	ENV216	R & S	101787	12, 29, 2021
<input checked="" type="checkbox"/>	LISN	ESH2-Z5	R & S	100450	12, 29, 2021
<input checked="" type="checkbox"/>	PULSE LIMITER	ESH3-Z2	R & S	101915	12, 29, 2021
<input checked="" type="checkbox"/>	8-WIRE ISN CAT3,5	ENY81	R & S	100174	12, 30, 2021
<input type="checkbox"/>	8-WIRE ISN CAT6	ENY81-CAT6	R & S	101665	12, 30, 2021
<input type="checkbox"/>	CDN	CDNS502A	TESEQ	40431	12, 29, 2021

Test Conditions

Temperature: (24,1 ± 0,2) °C
Relative Humidity: (45,4 ± 0,2) % R.H.

Frequency Range of Measurement

150 kHz to 30 MHz

Instrument Settings

IF Band Width: 9 kHz

Test Results

The requirements are:

- ☒ PASS
☐ NOT PASS
☐ NOT APPLICABLE

Remarks

See Appendix A for test data.



2.3 Radiated Electric Field Emissions(Below 1 GHz)

Test Date

Apr. 05, 2021

Test Location

☐ OPEN AREA TEST SITE #2 ☒ SEMI ANECHOIC CHAMBER #4(10m)

Test Equipment

Used	Description	Model Number	Manufacturer	Serial Number	Cal. Due
<input checked="" type="checkbox"/>	EMI Test S/W	EP5/RE	TOYO Corporation	6.0.0	-
<input checked="" type="checkbox"/>	EMI TEST RECEIVER	ESU26	R & S	100551	04, 01, 2022
<input checked="" type="checkbox"/>	AMPLIFIER	SCU 01	R & S	100603	11, 25, 2021
<input checked="" type="checkbox"/>	TRILOG-BROADBAND ANTENNA	VULB9163	Schwarzbeck	715	12, 08, 2022
<input checked="" type="checkbox"/>	ATTENUATOR	8491A	HP	32173	03, 10, 2022

Test Conditions

Temperature: (23,3 ± 0,2) °C

Relative Humidity: (44,7 ± 0,2) % R.H.

Frequency Range of Measurement

30 MHz to 1 GHz

Instrument Settings

IF Band Width: 120 kHz

Test Results

The requirements are:

- ☒ PASS
☐ NOT PASS
☐ NOT APPLICABLE

Remarks

See Appendix A for test data.



2.4 Radiated Electric Field Emissions(Above 1 GHz)

Test Date

Apr. 05, 2021

Test Location

SEMI ANECHOIC CHAMBER #3

Test Equipment

Used	Description	Model Number	Manufacturer	Serial Number	Cal. Due
<input checked="" type="checkbox"/>	EMI Test S/W	EP5/RE	TOYO Corporation	6.0.0	-
<input checked="" type="checkbox"/>	EMI TEST RECEIVER	ESR7	R & S	101190	08, 05, 2021
<input checked="" type="checkbox"/>	PREAMPLIFIER	8449B	AGILENT	3008A01967	04, 07, 2022
<input type="checkbox"/>	ATTENUATOR	8491A	HP	35496	03, 10, 2022
<input checked="" type="checkbox"/>	DOUBLE RIDGED HORN ANTENNA	SAS-571	A.H.SYSTEM,INC	781	03, 11, 2022

Test Conditions

Temperature: (23,9 ± 0,2) °C

Relative Humidity: (45,0 ± 0,2) % R.H.

Frequency Range of Measurement

1 GHz to 6 GHz

Instrument Settings

IF Band Width: 1 MHz

Test Results

The requirements are:

- ☒ PASS
☐ NOT PASS
☐ NOT APPLICABLE

Remarks

See Appendix A for test data.

APPENDIX A – TEST DATA

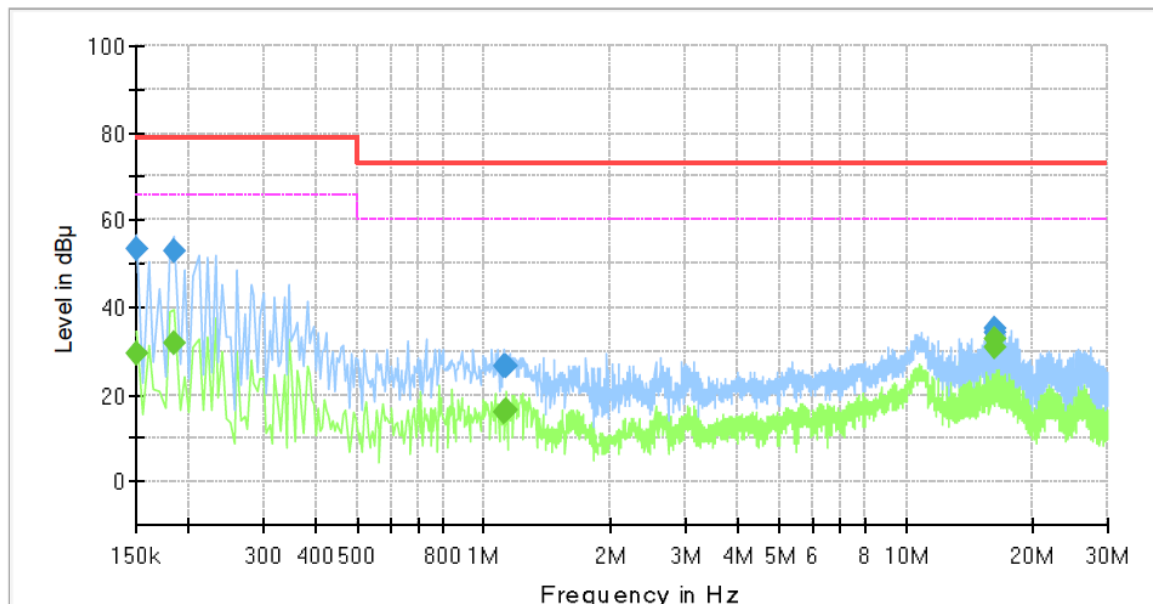
Conducted Emissions at Mains Power Ports

■ DC Mode

HOT LINE

Common Information

Test Description:	Conducted Emission
Model No.:	XND-C7083RV
Phase:	H
Mode:	DC
Operator Name:	KES



Final_Result

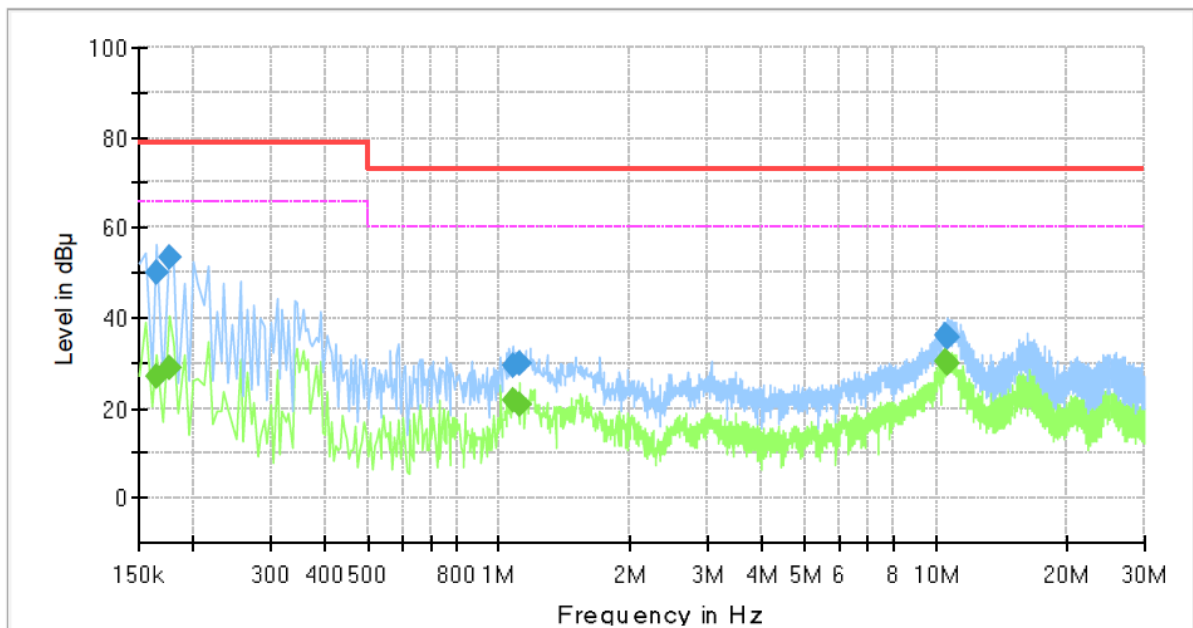
Frequency (MHz)	QuasiPeak (dBμV)	CAverage (dBμV)	Limit (dBμV)	Margin (dB)	Meas. Time (ms)	Bandwidth (kHz)	Line	Corr. (dB)
0.150000	---	29.62	66.00	36.38	1000.0	9.000	L1	19.4
0.150000	53.53	---	79.00	25.47	1000.0	9.000	L1	19.4
0.185000	---	31.92	66.00	34.08	1000.0	9.000	L1	19.4
0.185000	52.73	---	79.00	26.27	1000.0	9.000	L1	19.4
1.115000	---	15.87	60.00	44.13	1000.0	9.000	L1	20.0
1.115000	26.54	---	73.00	46.46	1000.0	9.000	L1	20.0
1.130000	---	16.35	60.00	43.65	1000.0	9.000	L1	20.0
1.130000	26.69	---	73.00	46.31	1000.0	9.000	L1	20.0
16.225000	---	31.06	60.00	28.94	1000.0	9.000	L1	19.9
16.225000	34.00	---	73.00	39.00	1000.0	9.000	L1	19.9
16.230000	---	32.67	60.00	27.33	1000.0	9.000	L1	19.9
16.230000	35.26	---	73.00	37.74	1000.0	9.000	L1	19.9

This report shall not be reproduced except in full, without the written approval of KES Co., Ltd.
The results shown in this test report refer only to the sample(s) tested unless otherwise stated.
The authenticity of the test report, contact kes@kes.co.kr

NEUTRAL LINE

Common Information

Test Description:	Conducted Emission
Model No.:	XND-C7083RV
Phase:	N
Mode:	DC
Operator Name:	KES



Final Result

Frequency (MHz)	QuasiPeak (dBμV)	CAverage (dBμV)	Limit (dBμV)	Margin (dB)	Meas. Time (ms)	Bandwidth (kHz)	Line	Corr. (dB)
0.165000	---	27.21	66.00	38.79	1000.0	9.000	N	19.4
0.165000	49.87	---	79.00	29.13	1000.0	9.000	N	19.4
0.175000	---	28.71	66.00	37.29	1000.0	9.000	N	19.4
0.175000	53.56	---	79.00	25.44	1000.0	9.000	N	19.4
1.075000	---	21.78	60.00	38.22	1000.0	9.000	N	20.0
1.075000	29.41	---	73.00	43.59	1000.0	9.000	N	20.0
1.115000	---	20.68	60.00	39.32	1000.0	9.000	N	20.0
1.115000	30.03	---	73.00	42.97	1000.0	9.000	N	20.0
10.520000	---	30.24	60.00	29.76	1000.0	9.000	N	19.9
10.520000	35.89	---	73.00	37.11	1000.0	9.000	N	19.9
10.695000	---	30.08	60.00	29.92	1000.0	9.000	N	19.9
10.695000	35.64	---	73.00	37.36	1000.0	9.000	N	19.9

◆ Calculation

$$\text{QuasiPeak [dBuV]} / \text{CAverage [dBuV]} = \text{Reading Value [dBuV]} + \text{Corr. [dB]}$$

QuasiPeak / CAverage : The Final Value

Reading Value : Not shown in the table.

Corr. : Correction values (LISN FACTOR + (Cable Loss + Pulse Limiter FACTOR))

This report shall not be reproduced except in full, without the written approval of KES Co., Ltd.

The results shown in this test report refer only to the sample(s) tested unless otherwise stated.

The authenticity of the test report, contact kes@kes.co.kr

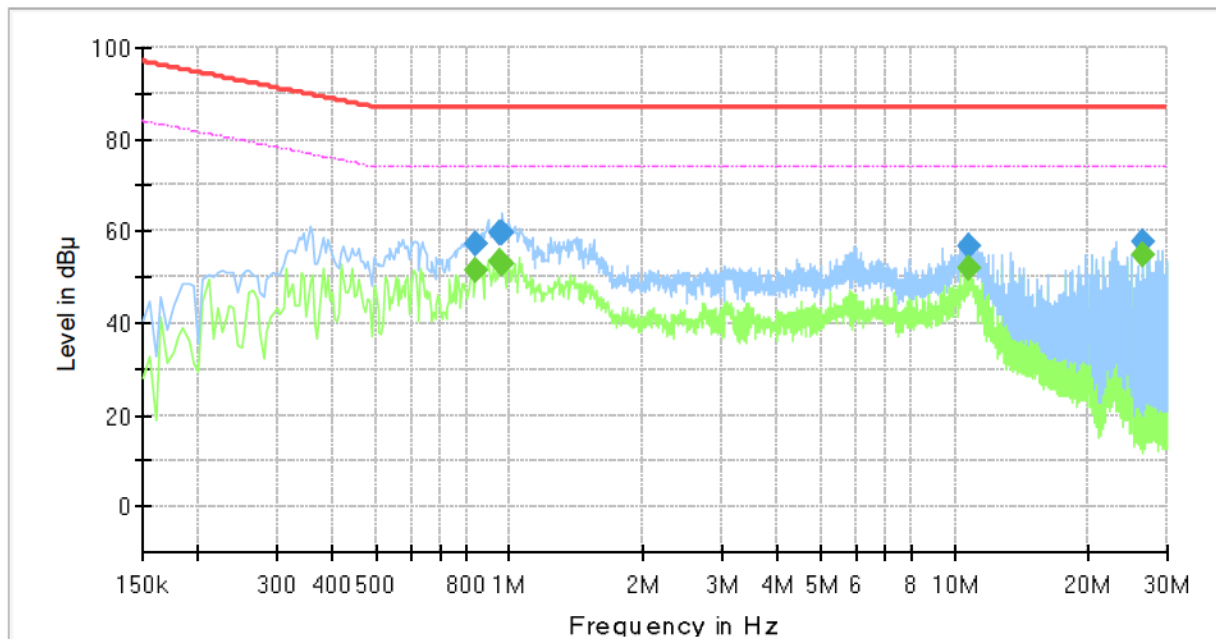
Conducted Emissions at Telecommunication Ports

■ DC Mode

[100 Mbps]

Common Information

Test Description:	Telecommunication Emission
Model No.:	XND-C7083RV
Mode :	DC
Speed :	100 Mbps
Operator Name:	KES

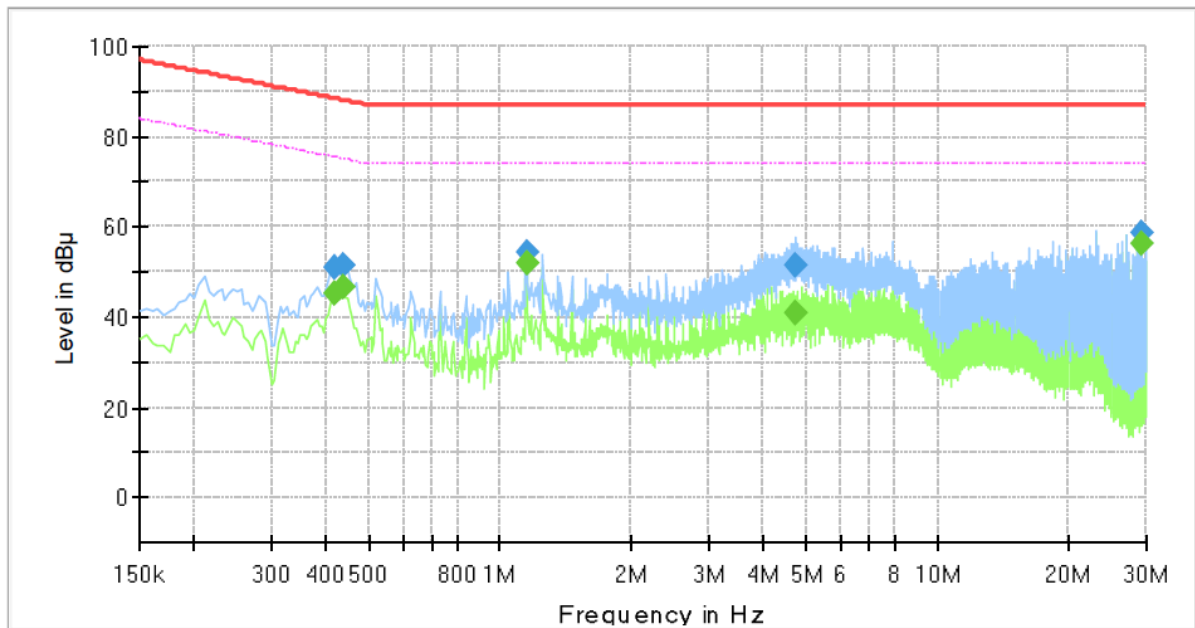


Final Result

Frequency (MHz)	QuasiPeak (dBμV)	CAverage (dBμV)	Limit (dBμV)	Margin (dB)	Meas. Time (ms)	Bandwidth (kHz)	Line	Corr. (dB)
0.840000	---	51.42	74.00	22.58	1000.0	9.000	Single Line	19.9
0.840000	57.44	---	87.00	29.56	1000.0	9.000	Single Line	19.9
0.945000	---	53.32	74.00	20.68	1000.0	9.000	Single Line	20.0
0.945000	59.57	---	87.00	27.43	1000.0	9.000	Single Line	20.0
0.965000	---	52.70	74.00	21.30	1000.0	9.000	Single Line	19.9
0.965000	59.74	---	87.00	27.26	1000.0	9.000	Single Line	19.9
10.795000	---	51.90	74.00	22.10	1000.0	9.000	Single Line	19.7
10.795000	57.00	---	87.00	30.00	1000.0	9.000	Single Line	19.7
26.610000	---	54.80	74.00	19.20	1000.0	9.000	Single Line	20.3
26.610000	57.95	---	87.00	29.05	1000.0	9.000	Single Line	20.3

PoE Mode
[100 Mbps]
Common Information

Test Description:	Telecommunication Emission
Model No.:	XND-C7083RV
Mode :	PoE
Speed :	100 Mbps
Operator Name:	KES


Final Result

Frequency (MHz)	QuasiPeak (dBμV)	CAverage (dBμV)	Limit (dBμV)	Margin (dB)	Meas. Time (ms)	Bandwidth (kHz)	Line	Corr. (dB)
0.420000	---	45.48	75.45	29.97	1000.0	9.000	Single Line	19.7
0.420000	50.85	---	88.45	37.60	1000.0	9.000	Single Line	19.7
0.440000	---	46.65	75.06	28.41	1000.0	9.000	Single Line	19.7
0.440000	51.51	---	88.06	36.55	1000.0	9.000	Single Line	19.7
1.150000	---	52.15	74.00	21.85	1000.0	9.000	Single Line	20.0
1.150000	54.48	---	87.00	32.52	1000.0	9.000	Single Line	20.0
4.760000	---	41.01	74.00	32.99	1000.0	9.000	Single Line	19.5
4.760000	51.49	---	87.00	35.51	1000.0	9.000	Single Line	19.5
29.235000	---	56.37	74.00	17.63	1000.0	9.000	Single Line	20.5
29.235000	58.59	---	87.00	28.41	1000.0	9.000	Single Line	20.5

◆ Calculation

$$\text{QuasiPeak [dBμV]} / \text{CAverage [dBμV]} = \text{Reading Value [dBμV]} + \text{Corr. [dB]}$$

QuasiPeak / CAverage : The Final Value

Reading Value : Not shown in the table.

Corr. : Correction values (ISN FACTOR + (Cable Loss + Pulse Limiter FACTOR))

This report shall not be reproduced except in full, without the written approval of KES Co., Ltd.
The results shown in this test report refer only to the sample(s) tested unless otherwise stated.
The authenticity of the test report, contact kes@kes.co.kr



KES Co., Ltd.

3701, 40, Simin-daero 365beon-gil,
Dongan-gu, Anyang-si, Gyeonggi-do, 14057, Korea
Tel: +82-31-425-6200 / Fax: +82-31-424-0450
www.kes.co.kr

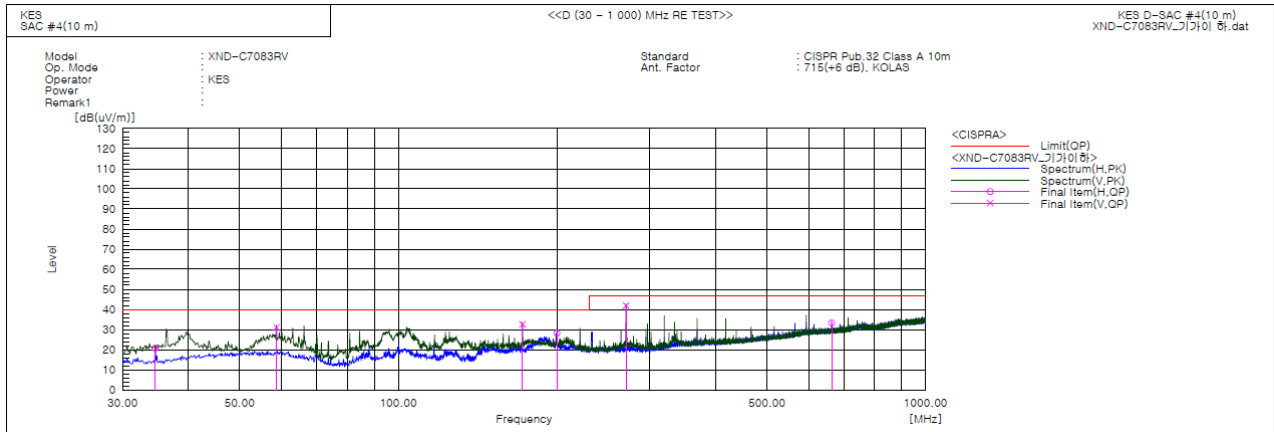
Report No.:

KES-EM-21T0422-R1

Page (24) of (42)

Radiated Electric Field Emissions(Below 1 GHz)

■ DC Mode



Final Result

No.	Frequency [MHz]	(P)	Reading QP [dB(uV)]	c.f [dB(1/m)]	Result QP [dB(uV/m)]	Limit QP [dB(uV/m)]	Margin QP [dB]	Height [cm]	Angle [deg]	Remark
1	34.608	H	45.7	-24.9	20.8	40.0	19.2	212.0	124.0	
2	58.736	V	52.9	-21.8	31.1	40.0	8.9	109.0	308.0	
3	171.984	V	56.6	-24.0	32.6	40.0	7.4	167.0	217.0	
4	199.871	H	49.0	-20.8	28.2	40.0	11.8	293.0	354.0	
5	270.318	V	60.6	-18.7	41.9	47.0	5.1	113.0	270.0	
6	663.653	H	41.0	-7.7	33.3	47.0	13.7	334.0	321.0	

This report shall not be reproduced except in full, without the written approval of KES Co., Ltd.
The results shown in this test report refer only to the sample(s) tested unless otherwise stated.
The authenticity of the test report, contact kes@kes.co.kr

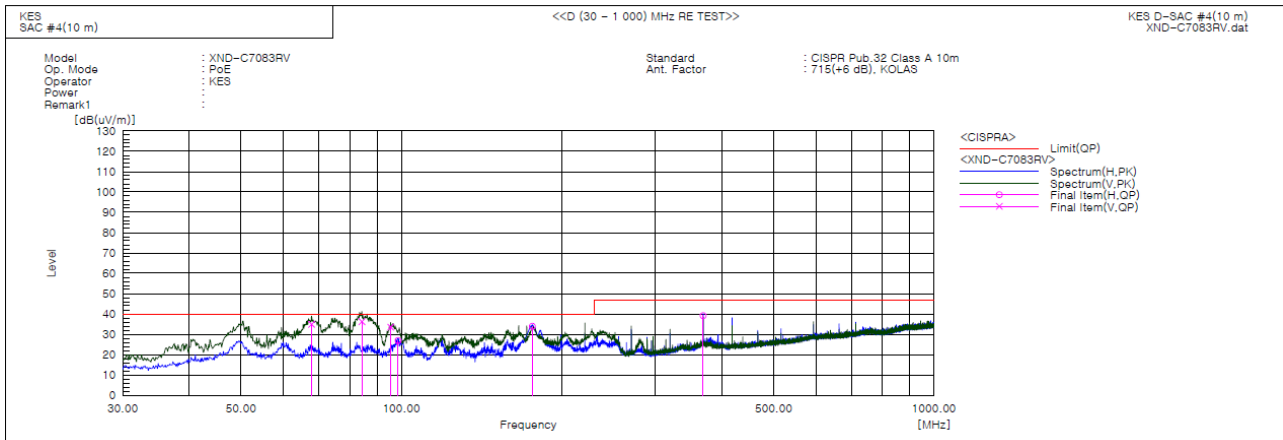


KES Co., Ltd.

3701, 40, Simin-daero 365beon-gil,
Dongan-gu, Anyang-si, Gyeonggi-do, 14057, Korea
Tel: +82-31-425-6200 / Fax: +82-31-424-0450
www.kes.co.kr

Report No.:
KES-EM-21T0422-R1
Page (25) of (42)

■ PoE Mode



Final Result

No.	Frequency [MHz]	(P)	Reading QP [dB(uV)]	c.f [dB(1/m)]	Result QP [dB(uV/m)]	Limit QP [dB(uV/m)]	Margin QP [dB]	Height [cm]	Angle [deg]	Remark
1	67.830	V	59.0	-24.1	34.9	40.0	5.1	122.0	120.0	
2	84.320	V	62.7	-26.5	36.2	40.0	3.8	147.0	76.0	
3	95.475	V	57.0	-23.4	33.6	40.0	6.4	165.0	317.0	
4	98.628	H	49.6	-22.7	26.9	40.0	13.1	291.0	288.0	
5	176.106	H	57.6	-23.7	33.9	40.0	6.1	389.0	211.0	
6	368.651	H	54.2	-15.0	39.2	47.0	7.8	367.0	11.0	

◆ Calculation

Corrected Amplitude [dBuV] = Amplitude[dBuV] + Correction Factor [dB]

Corrected Amplitude : The Final Value, Amplitude : Reading Value,

Correction Factor : ANT FACTOR + Cable loss

This report shall not be reproduced except in full, without the written approval of KES Co., Ltd.
The results shown in this test report refer only to the sample(s) tested unless otherwise stated.
The authenticity of the test report, contact kes@kes.co.kr



KES Co., Ltd.

3701, 40, Simin-daero 365beon-gil,
Dongan-gu, Anyang-si, Gyeonggi-do, 14057, Korea
Tel: +82-31-425-6200 / Fax: +82-31-424-0450
www.kes.co.kr

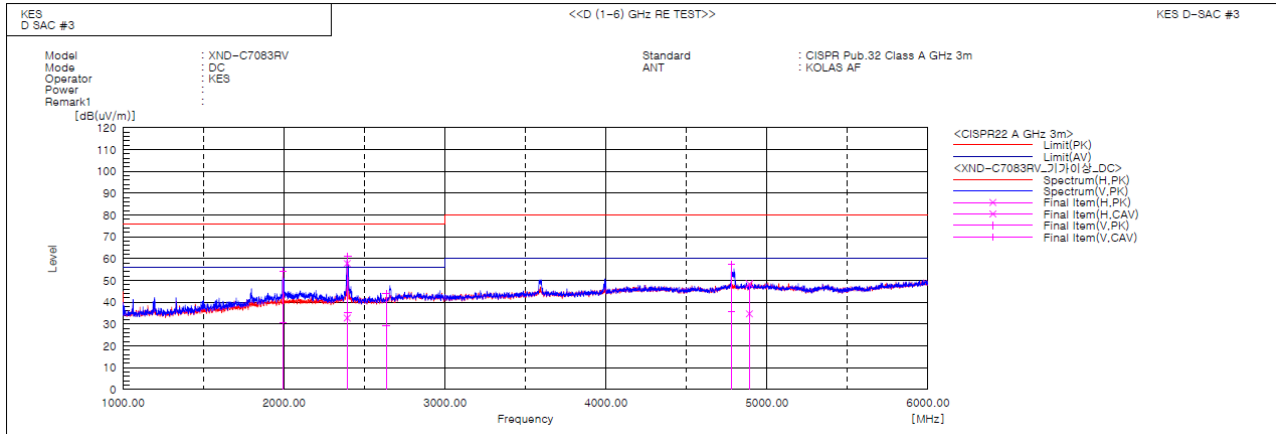
Report No.:

KES-EM-21T0422-R1

Page (26) of (42)

Radiated Electric Field Emissions(Above 1 GHz)

■ DC Mode



Final Result

No.	Frequency [MHz]	(P)	Reading PK [dB(uV)]	Reading CAV [dB(uV)]	c.f [dB(1/m)]	Result PK [dB(uV/m)]	Result CAV [dB(uV/m)]	Limit PK [dB(uV/m)]	Limit AV [dB(uV/m)]	Margin PK [dB]	Margin CAV [dB]	Height [cm]	Angle [deg]	Remark
1	1993.590	V	55.0	31.5	-0.9	54.1	30.6	76.0	56.0	21.9	25.4	100.0	199.7	
2	2396.509	V	61.0	35.1	0.2	61.2	35.3	76.0	56.0	14.8	20.7	100.0	139.6	
3	2392.520	H	57.6	32.6	0.2	57.8	32.8	76.0	56.0	18.2	23.2	100.0	357.5	
4	2634.425	V	43.4	28.7	0.5	43.9	29.2	76.0	56.0	32.1	26.8	100.0	177.4	
5	4779.453	V	49.0	27.5	8.4	57.4	35.9	80.0	60.0	22.6	24.1	100.0	29.6	
6	4891.323	H	39.6	25.9	8.8	48.4	34.7	80.0	60.0	31.6	25.3	100.0	289.4	

This report shall not be reproduced except in full, without the written approval of KES Co., Ltd.
The results shown in this test report refer only to the sample(s) tested unless otherwise stated.
The authenticity of the test report, contact kes@kes.co.kr



KES Co., Ltd.

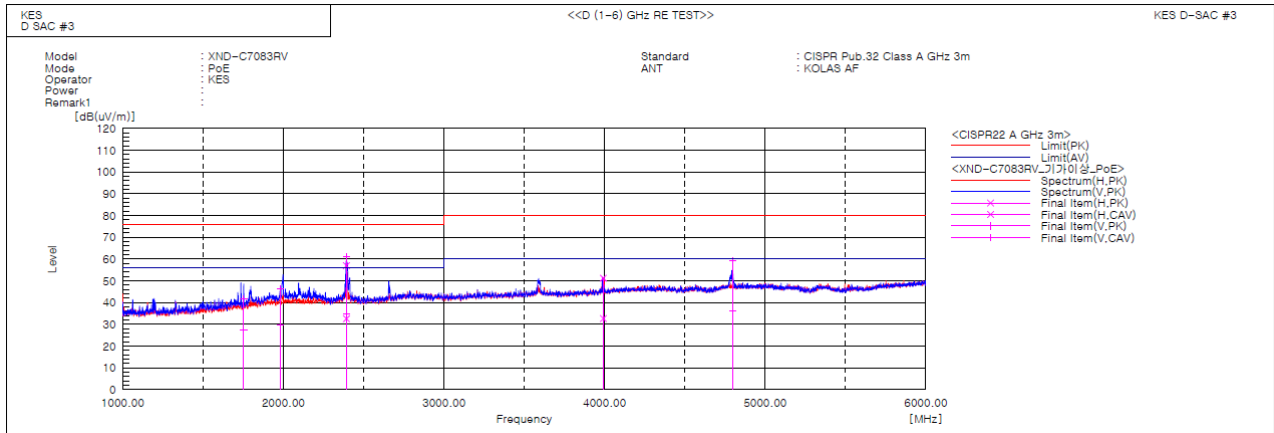
3701, 40, Simin-daero 365beon-gil,
Dongan-gu, Anyang-si, Gyeonggi-do, 14057, Korea
Tel: +82-31-425-6200 / Fax: +82-31-424-0450
www.kes.co.kr

Report No.:

KES-EM-21T0422-R1

Page (27) of (42)

PoE Mode



Final Result

No.	Frequency [MHz]	(P)	Reading PK [dB(uV)]	Reading CAV [dB(uV)]	c.f [dB(1/m)]	Result PK [dB(uV/m)]	Result CAV [dB(uV/m)]	Limit PK [dB(uV/m)]	Limit AV [dB(uV/m)]	Margin PK [dB]	Margin CAV [dB]	Height [cm]	Angle [deg]	Remark
1	1753.647	V	45.2	30.7	-3.5	41.7	27.2	76.0	56.0	34.3	28.8	100.0	160.3	
2	1981.063	V	47.2	30.8	-0.9	46.3	29.9	76.0	56.0	29.7	26.1	100.0	232.3	
3	2392.610	V	60.8	34.8	0.2	61.0	35.0	76.0	56.0	15.0	21.0	100.0	133.5	
4	2393.411	H	56.8	32.4	0.2	57.0	32.6	76.0	56.0	19.0	23.4	100.0	2.6	
5	3992.151	H	45.6	27.1	5.6	51.2	32.7	80.0	60.0	28.8	27.3	100.0	99.2	
6	4799.079	V	50.7	27.7	8.5	59.2	36.2	80.0	60.0	20.8	23.8	100.0	27.1	

Calculation

Result(PK/CAV) [dB(μ V/m)] = (Reading(PK/CAV)[dB(μ V)] + c.f[dB(1/m)])

Margin(PK/CAV)[dB] = Limit[dB(μ V/m)] - Result(PK/CAV) [dB(μ V/m)]

Reading(PK/CAV) : Reading value, Result(PK/CAV) : Reading value + Factor value

Limit(QP) : Limit value, c.f : (ANT Factor + Cable Loss - Preamp Factor), Margin: Margin value

This report shall not be reproduced except in full, without the written approval of KES Co., Ltd.

The results shown in this test report refer only to the sample(s) tested unless otherwise stated.

The authenticity of the test report, contact kes@kes.co.kr

Test Setup Photos and Configuration

Conducted Emissions at Mains Power Ports

■ DC Mode



This report shall not be reproduced except in full, without the written approval of KES Co., Ltd.
The results shown in this test report refer only to the sample(s) tested unless otherwise stated.
The authenticity of the test report, contact kes@kes.co.kr

Conducted Emissions at Telecommunication Ports

■ DC Mode



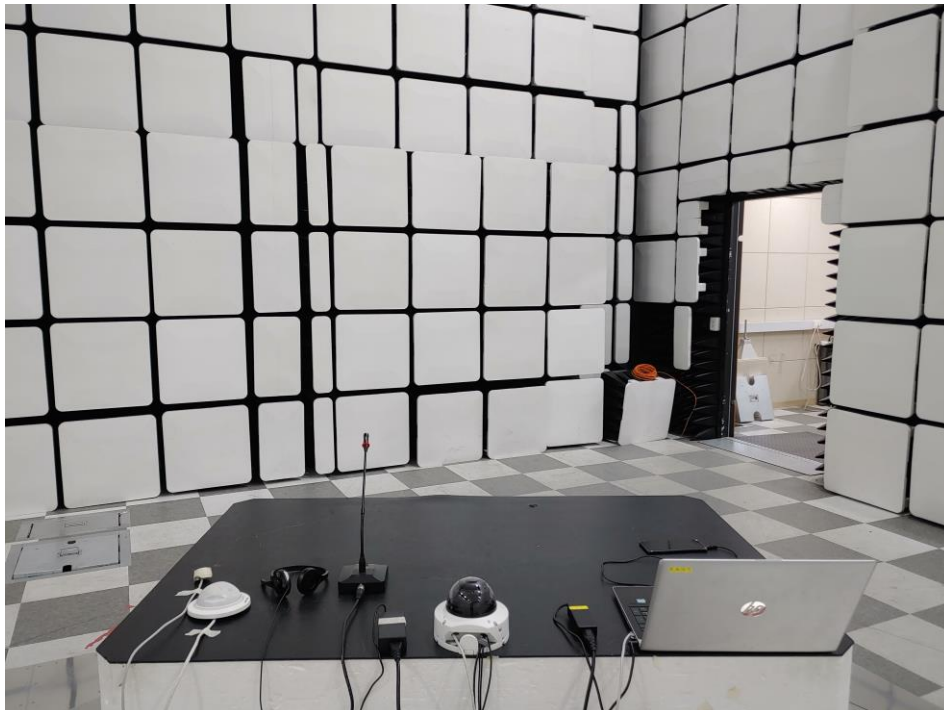
This report shall not be reproduced except in full, without the written approval of KES Co., Ltd.
The results shown in this test report refer only to the sample(s) tested unless otherwise stated.
The authenticity of the test report, contact kes@kes.co.kr

■ PoE Mode



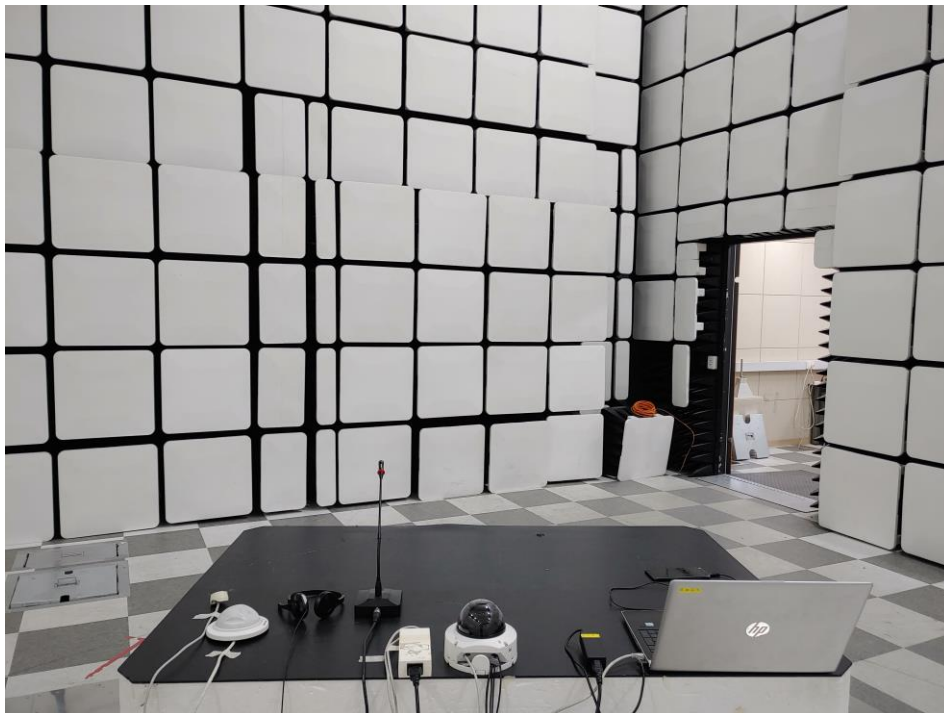
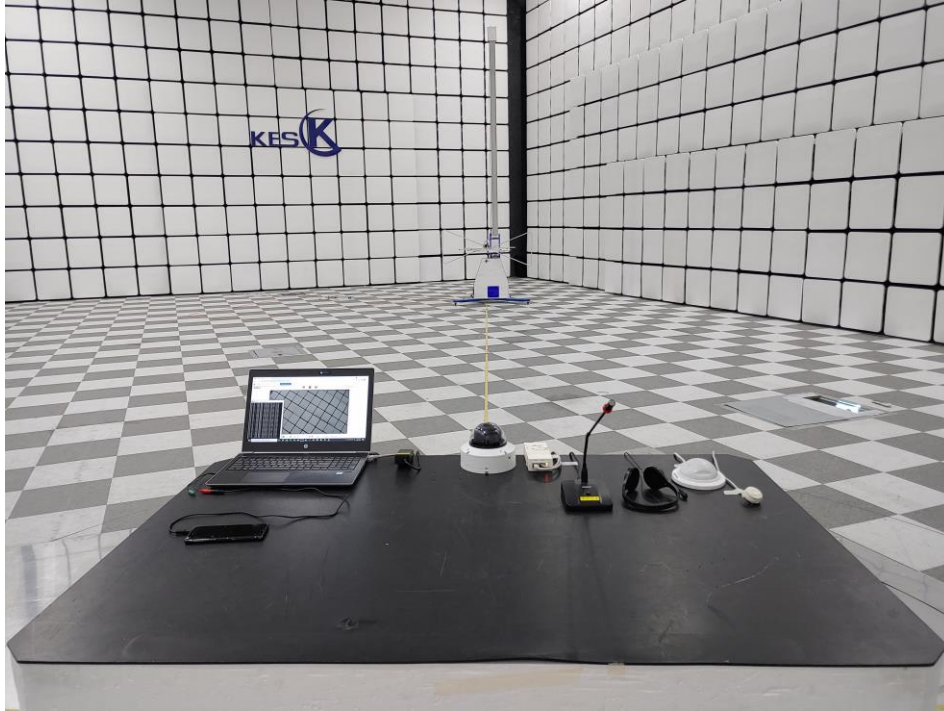
Radiated Electric Field Emissions(Below 1 GHz)

■ DC Mode



This report shall not be reproduced except in full, without the written approval of KES Co., Ltd.
The results shown in this test report refer only to the sample(s) tested unless otherwise stated.
The authenticity of the test report, contact kes@kes.co.kr

■ PoE Mode



This report shall not be reproduced except in full, without the written approval of KES Co., Ltd.
The results shown in this test report refer only to the sample(s) tested unless otherwise stated.
The authenticity of the test report, contact kes@kes.co.kr

Radiated Electric Field Emissions(Above 1 GHz)

■ DC Mode



This report shall not be reproduced except in full, without the written approval of KES Co., Ltd.
The results shown in this test report refer only to the sample(s) tested unless otherwise stated.
The authenticity of the test report, contact kes@kes.co.kr

■ PoE Mode



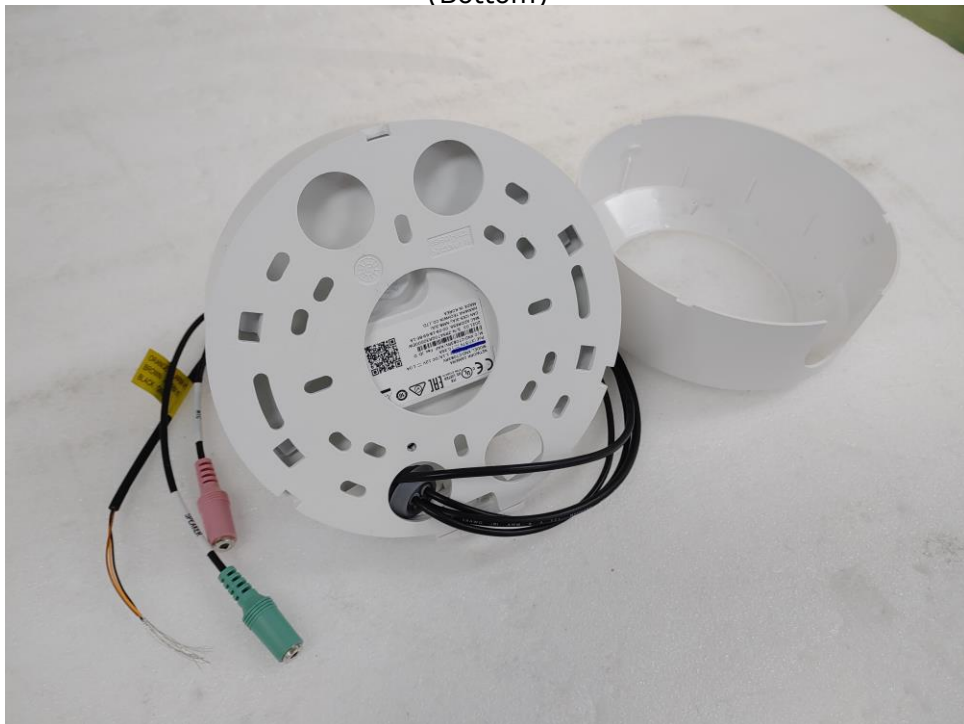
This report shall not be reproduced except in full, without the written approval of KES Co., Ltd.
The results shown in this test report refer only to the sample(s) tested unless otherwise stated.
The authenticity of the test report, contact kes@kes.co.kr

EUT External Photographs

(Top)



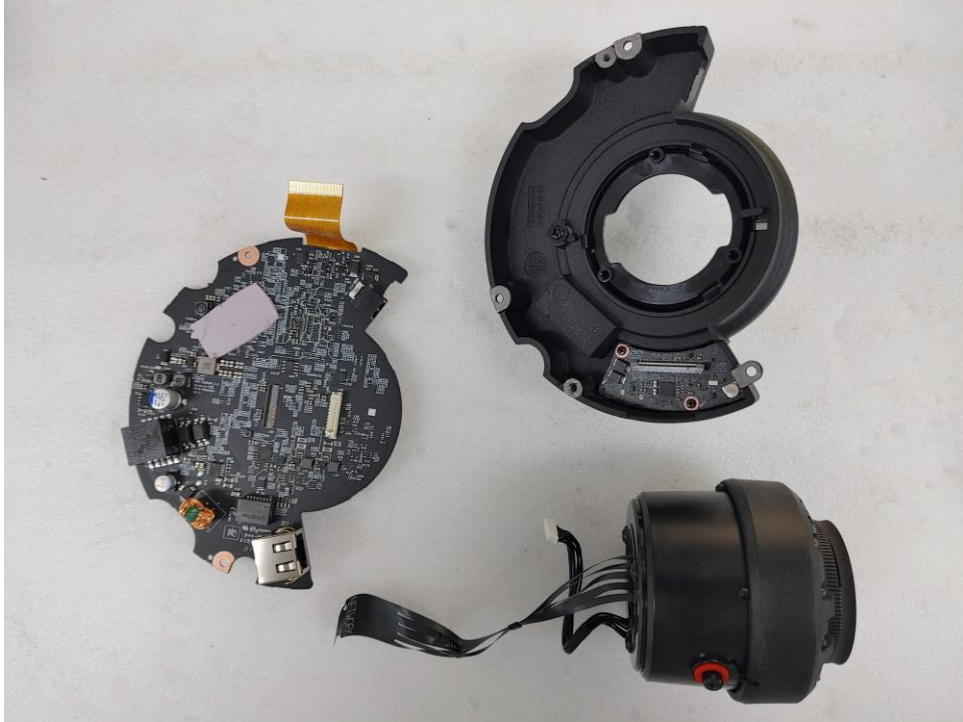
(Bottom)



This report shall not be reproduced except in full, without the written approval of KES Co., Ltd.
The results shown in this test report refer only to the sample(s) tested unless otherwise stated.
The authenticity of the test report, contact kes@kes.co.kr

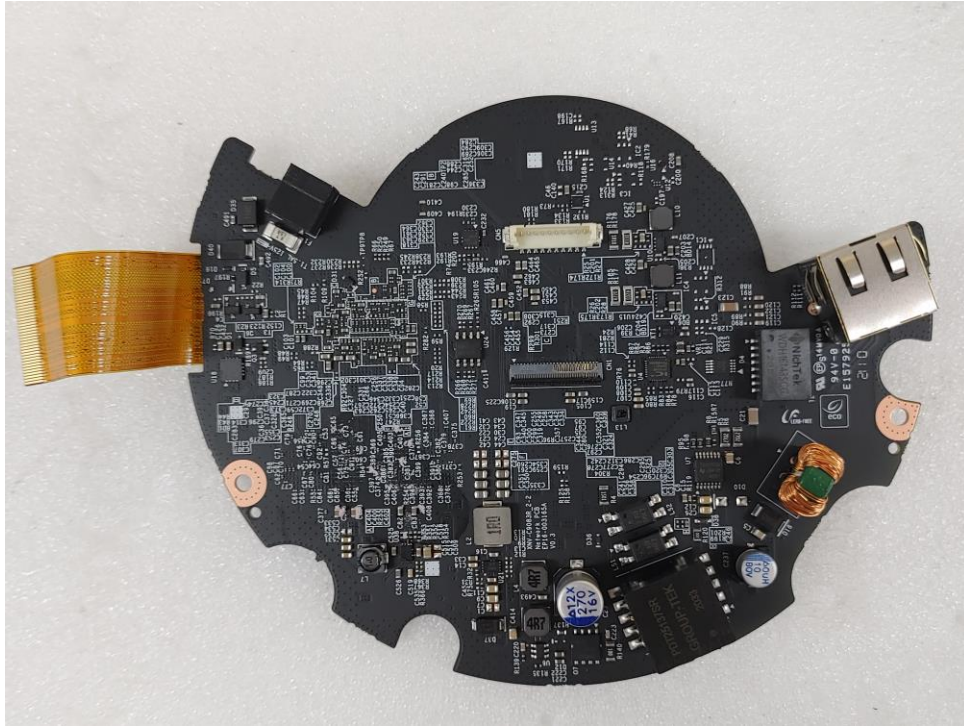
EUT Internal Photographs

(Internal View)

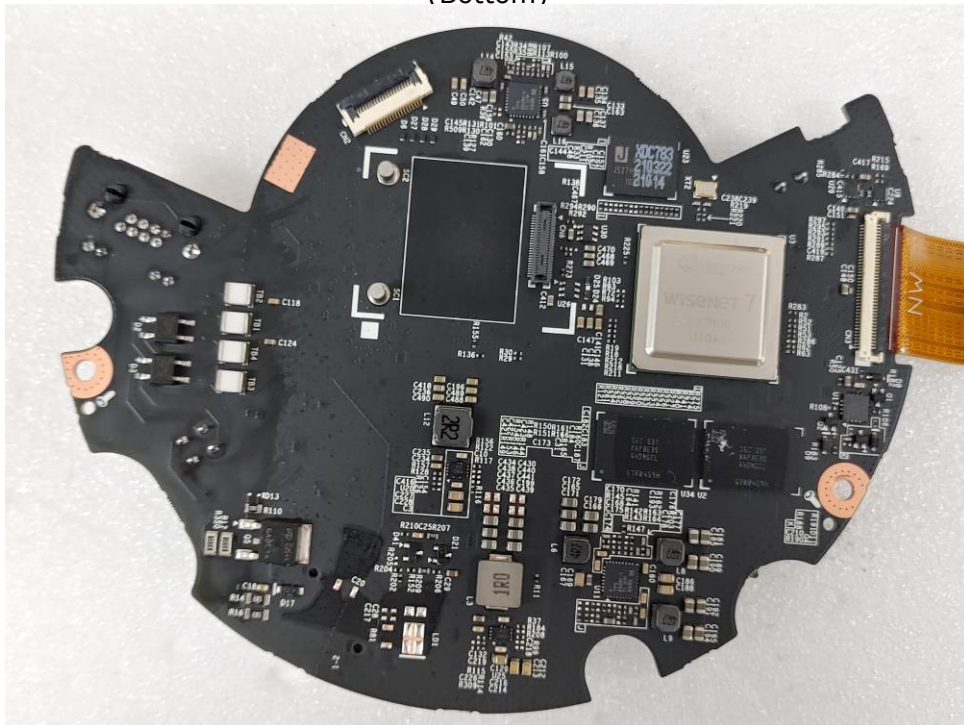


EUT Internal View – Main Board

(Top)



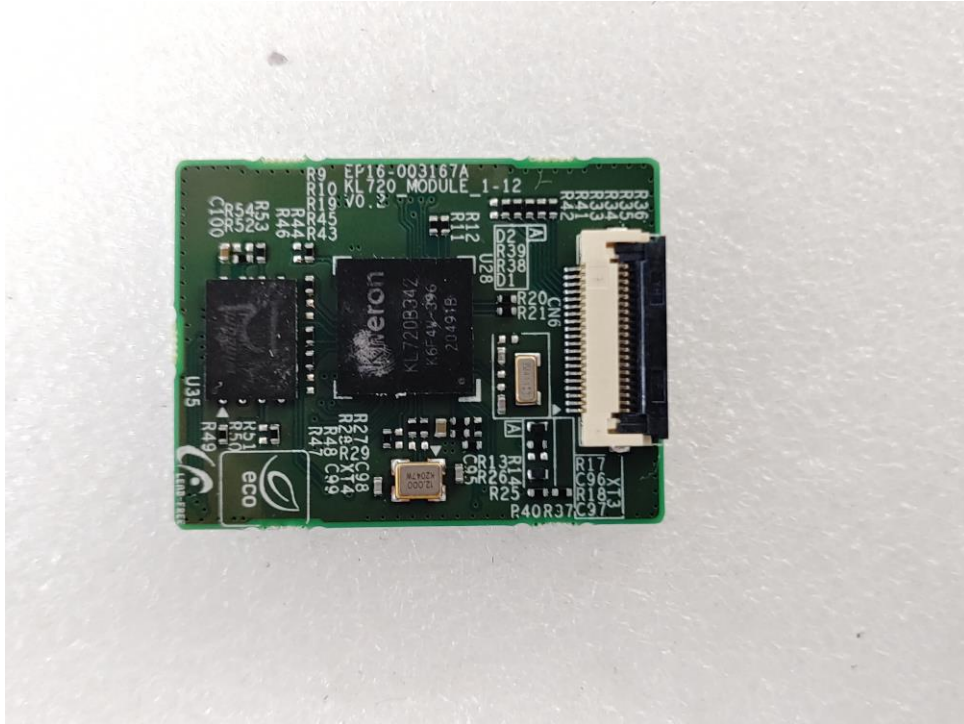
(Bottom)



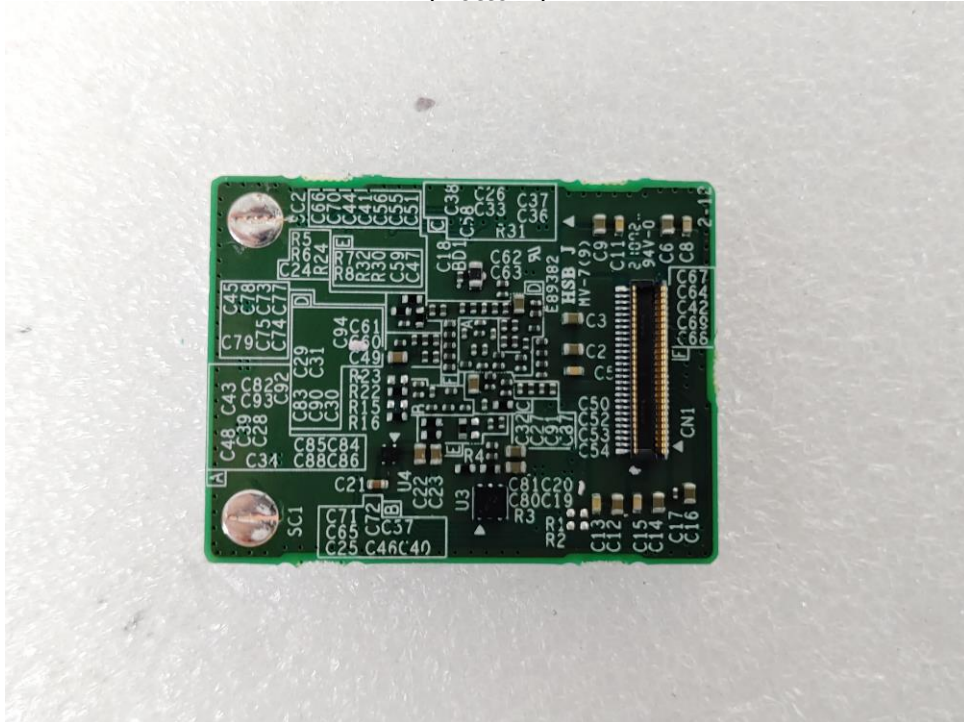
This report shall not be reproduced except in full, without the written approval of KES Co., Ltd.
The results shown in this test report refer only to the sample(s) tested unless otherwise stated.
The authenticity of the test report, contact kes@kes.co.kr

EUT Internal View – Sub Board 1

(Top)



(Bottom)



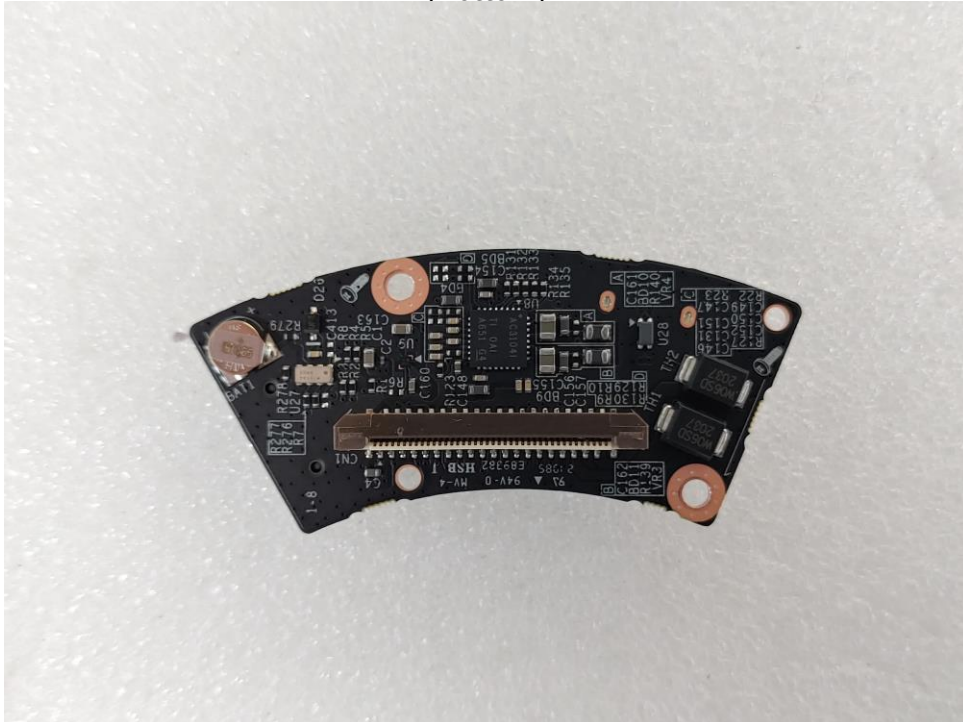
This report shall not be reproduced except in full, without the written approval of KES Co., Ltd.
The results shown in this test report refer only to the sample(s) tested unless otherwise stated.
The authenticity of the test report, contact kes@kes.co.kr

EUT Internal View – Sub Board 2

(Top)



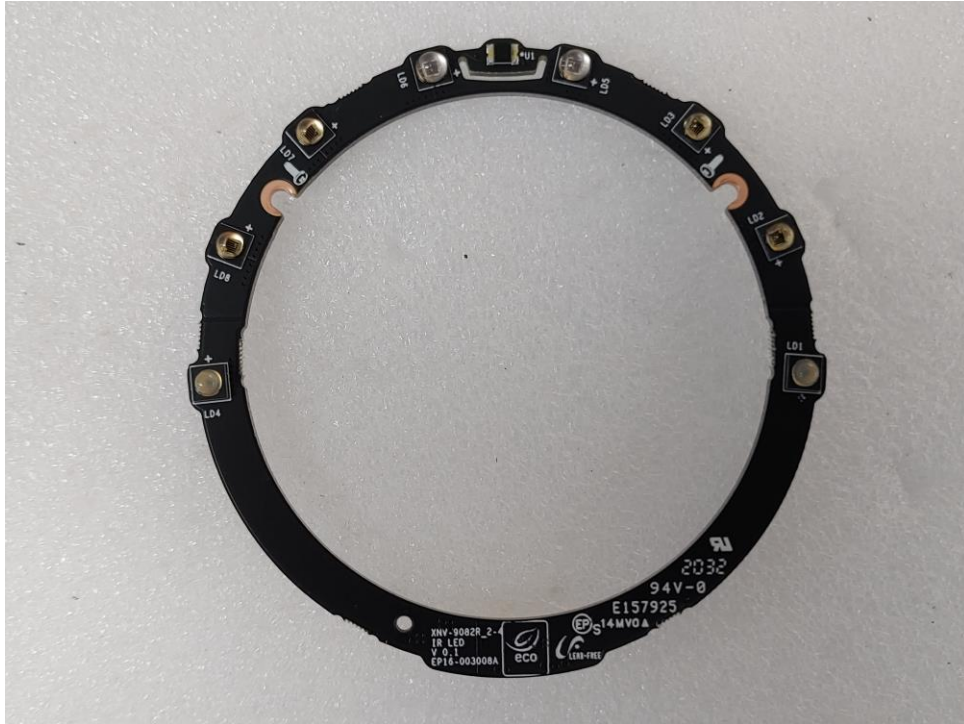
(Bottom)



This report shall not be reproduced except in full, without the written approval of KES Co., Ltd.
The results shown in this test report refer only to the sample(s) tested unless otherwise stated.
The authenticity of the test report, contact kes@kes.co.kr

EUT Internal View – Sub Board 3

(Top)



(Bottom)



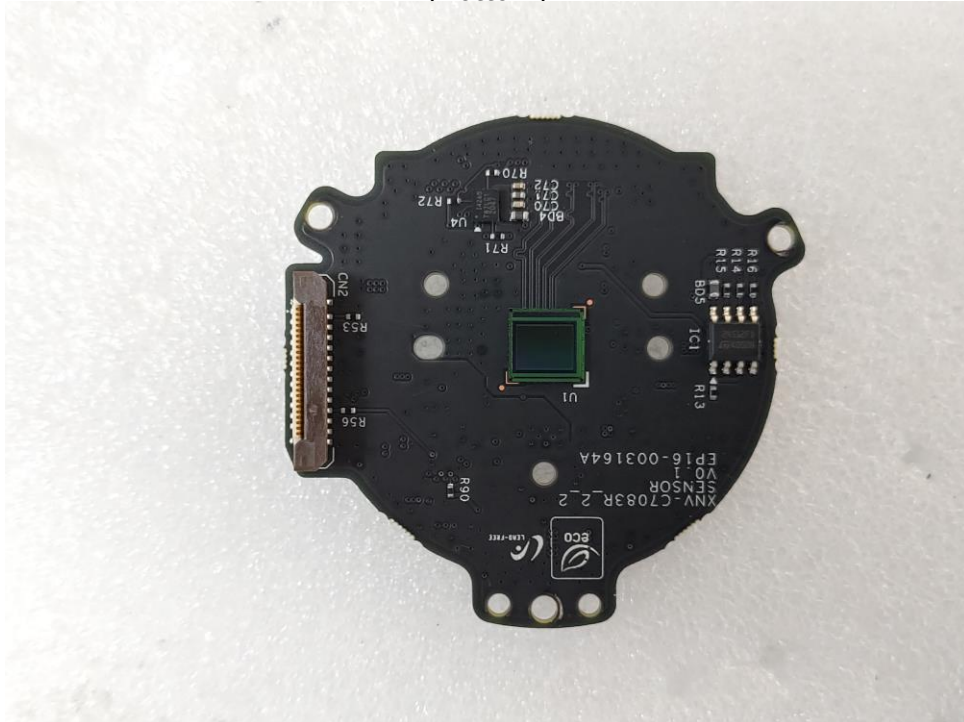
This report shall not be reproduced except in full, without the written approval of KES Co., Ltd.
The results shown in this test report refer only to the sample(s) tested unless otherwise stated.
The authenticity of the test report, contact kes@kes.co.kr

EUT Internal View – Sub Board 4

(Top)



(Bottom)



Label Photographs



この装置は、クラスA情報技術装置です。この装置を家庭環境で使用すると電波妨害を引き起こすことがあります。この場合には使用者が適切な対策を講ずるよう要求されることがあります。

VCCI-A