

**KES Co., Ltd.**

3701, 40, Simin-daero 365beon-gil,
Dongan-gu, Anyang-si, Gyeonggi-do, 14057, Korea
Tel: +82-31-425-6200 / Fax: +82-31-424-0450
www.kes.co.kr

Report No.:

KES-EM-22T0663-R1

Page (1) of (72)

EMC TEST REPORT

Test Report No. : KES-EM-22T0663-R1
Date of Issue : Feb. 24, 2023
Product name : NETWORK CAMERA
Model/Type No. : XND-8083RV
Variant Model : -
Applicant : Hanwha Vision Co., Ltd
Applicant Address : 6, Pangyo-ro 319Beon-gil, Bundang-gu, Seongnam-si,
Gyeonggi-do, Republic of Korea
Manufacturer : 1. HANWHA VISION VIETNAM COMPANY LIMITED
2. D-TECH CO.,LTD.
Manufacturer Address : 1. Lot O-2, Que Vo Industrial Zone extended area,
Nam Son commune, Bac Ninh city, Bac Ninh province, Vietnam
2. 173-25, Saneop-ro, Gwonseon-gu, Suwon-si, Gyeonggi- do,
Korea (Suwon Industrial Complex)
Date of Receipt : Jul. 08, 2022
Test date : Jul. 11, 2022 ~ Jul. 18, 2022
Test Results : ☒ **In Compliance** ☐ **Not in Compliance**

Tested by

Seon Ho, Choi
EMC Test Engineer

Reviewed by

Dong-Hun, Jang
EMC Technical Manager

This test report is not related to KS Q ISO/IEC 17025 and KOLAS.

This report shall not be reproduced except in full, without the written approval of KES Co., Ltd.
The results shown in this test report refer only to the sample(s) tested unless otherwise stated.
The authenticity of the test report, contact kes@kes.co.kr

**KES Co., Ltd.**

3701, 40, Simin-daero 365beon-gil,
Dongan-gu, Anyang-si, Gyeonggi-do, 14057, Korea
Tel: +82-31-425-6200 / Fax: +82-31-424-0450
www.kes.co.kr

Report No.:
KES-EM-22T0663-R1
Page (2) of (72)

REPORT REVISION HISTORY

Date	Test Report No.	Revision History
Aug. 02, 2022	KES-EM-22T0663	Issued
Feb. 24, 2023	KES-EM-22T0663-R1	Change the Applicant and manufacturer at the request of the customer

This report shall not be reproduced except in full, without the written approval of KES Co., Ltd. This document may be altered or revised by KES Co., Ltd. personnel only, and shall be noted in the revision section of the document. Any alteration of this document not carried out by KES Co., Ltd. will constitute fraud and shall nullify the document.

This report shall not be reproduced except in full, without the written approval of KES Co., Ltd.
The results shown in this test report refer only to the sample(s) tested unless otherwise stated.
The authenticity of the test report, contact kes@kes.co.kr



TABLE OF CONTENTS

1.0	General Product Description	4
1.1	Test Voltage & Frequency	8
1.2	Variant Model Differences.....	8
1.3	Device Modifications	8
1.4	Equipment Under Test.....	8
1.5	Support Equipments	8
1.6	External I/O Cabling	9
1.7	EUT Operating Mode(s)	10
1.8	Configuration.....	10
1.9	Remarks when standards applied	11
1.10	Calibration Details of Equipment Used for Measurement	11
1.11	Test Facility	11
1.12	Laboratory Accreditations and Listings	11
2.0	Test Regulations.....	12
2.1	Conducted Emissions at Mains Power Ports	13
2.2	Conducted Emissions at Telecommunication Ports	14
2.3	Radiated Electric Field Emissions(Below 1 GHz)	15
2.4	Radiated Electric Field Emissions(Above 1 GHz)	16
2.5	Harmonic Current Emissions	17
2.6	Voltage Fluctuations and Flicker	18
3.0	Criteria for compliance.....	19
3.1	Electrostatic Discharge.....	21
3.2	Radiated Electric Field Immunity	24
3.3	Electrical Fast Transients/Bursts	27
3.4	Surge Transients	30
3.5	Conducted Disturbance	34
3.6	Voltage Dips and Short Interruptions	38
APPENDIX A – TEST DATA.....		40
Conducted Emissions at Mains Power Ports.....		40
Conducted Emissions at Telecommunication Ports		42
Radiated Electric Field Emissions(Below 1 GHz)		44
Radiated Electric Field Emissions(Above 1 GHz).....		46
Harmonic Current Emissions and Voltage Fluctuations and Flicker		48
Test Setup Photos and Configuration		51
Conducted Emissions at Mains Power Ports.....		51
Conducted Emissions at Telecommunication Ports		52
Radiated Electric Field Emissions(Below 1 GHz)		54
Radiated Electric Field Emissions(Above 1 GHz).....		56
Harmonic Current Emissions and Voltage Fluctuations and Flicker		58
Electrostatic Discharge		59
Radiated Electric Field Immunity		60
Electrical Fast Transients/Bursts		61
Surge Transients.....		62
Conducted Disturbance.....		63
Voltage Dips and Short Interruptions.....		64
EUT External Photographs		65
EUT Internal Photographs		66



1.0 General Product Description

Main Specifications of EUT are:

Video	
Imaging Device	1/1.8" progressive CMOS
Resolution	3328x1872, 3072x1728, 2592x1944, 2688x1520, 1920x1080, 1600x1200, 1280x1024, 1280x960, 1280x720, 1024x768, 800x600, 800x448, 720x576, 720x480, 640x480, 640x360, 320x240
Max. Framerate	H.265/H.264: Max. 30fps/25fps(60Hz/50Hz) MJPEG: Max. 15fps/12fps(60Hz/50Hz)
Min. Illumination	(TBD) Color: 0.04Lux(F1.3, 1/30sec, 30IRE) B/W : 0.004Lux(F1.3, 1/30sec, 30IRE), 0Lux(IR LED on)
Video Out	CVBS: 1.0 Vp-p / 75Ω composite, 720x480(N), 720x576(P) for installation USB: Micro USB Type B, 1280x720 for installation
Lens	
Focal Length (Zoom Ratio)	4.4~9.3mm(2.1x) motorized varifocal
Max. Aperture Ratio	F1.3
Angular Field of View	H : 112.1°(Wide)~47.5°(Tele) V : 58.0°(Wide)~26.6°(Tele) D : 137.5°(Wide)~54.6°(Tele)
Min. Object Distance	0.5m(1.64ft)
Focus Control	Simple focus, Manual
Lens Type	P-iris(IR corrected)
Pan / Tilt / Rotate	
Pan / Tilt / Rotate Range	0°~360° / -45°~85° / 0°~355°(TBD)
Operational	
Camera Title	Displayed up to 85 characters
Direction Indicator	None
Day & Night	Auto(ICR)
Backlight Compensation	BLC, HLC, WDR, SSDR
Wide Dynamic Range	extremeWDR (120dB)
Digital Noise Reduction	WiseNRⅡ(Based on AI engine), SSNR V
Digital Image Stabilization	Support(built-in gyro sensor)

This report shall not be reproduced except in full, without the written approval of KES Co., Ltd.
The results shown in this test report refer only to the sample(s) tested unless otherwise stated.
The authenticity of the test report, contact kes@kes.co.kr

**KES Co., Ltd.**

3701, 40, Simin-daero 365beon-gil,
Dongan-gu, Anyang-si, Gyeonggi-do, 14057, Korea
Tel: +82-31-425-6200 / Fax: +82-31-424-0450
www.kes.co.kr

Report No.:

KES-EM-22T0663-R1

Page (5) of (72)

Defog	Support
Motion Detection	8ea, 8point Polygonal zones
Privacy Masking	32ea, Quadrangle zones - Color : Gray, Green, Red, Blue, Black, White - Mosaic
Gain Control	Support
White Balance	ATW / Narrow ATW / AWC / Manual / Indoor / Outdoor
LDC	Support (Fill/stretch mode)
Electronic Shutter Speed	Minimum / Maximum / Anti flicker (2~1/12,000sec) Auto prefer shutter control(Based on AI engine)
Digital PTZ	Support
Video Rotation	Flip, Mirror, Hallway view(90°/270°)
Analytics	- Analytics events based on AI engine(NPU) : Object detection (Person/Face/Vehicle(car/truck/bus/bicycle/motorcycle)/Licence plate), IVA (Virtual line/Area, Enter/Exit, Loitering, direction, intrusion) - Analytics events : Defocus detection, Motion detection, Tampering, Fog detection, Audio detection, Sound classification, Shock detection, Appear/Disappear
Business Intelligence	Based on AI engine(NPU) : People counting, Queue management, Heatmap
Alarm I/O	2 configurable I/O ports, DC 12V output(Max. 50mA)
Alarm Triggers	Analytics, Network disconnect, Alarm input, App event, Time schedule
Alarm Events	When alarm trigger occurred - File upload(image) : e-mail/FTP - Notification : e-mail - Recording : SD/SDHC/SDXC or NAS recording at event triggers - Alarm output - Handover(PTZ preset, Send message by HTTP/HTTPS/TCP) - Audio clip playback - PTZ preset
Audio In	Selectable(mic in/line in/built-in MIC) Supply voltage: 2.5VDC(4mA), Input impedance: 2K Ohm
Audio Out	Line out, Max.output level: 1Vrms
IR Viewable Length	WiselR 50m(164.04ft)(TBD)
Network	

This report shall not be reproduced except in full, without the written approval of KES Co., Ltd.
The results shown in this test report refer only to the sample(s) tested unless otherwise stated.
The authenticity of the test report, contact kes@kes.co.kr

**KES Co., Ltd.**

3701, 40, Simin-daero 365beon-gil,
Dongan-gu, Anyang-si, Gyeonggi-do, 14057, Korea
Tel: +82-31-425-6200 / Fax: +82-31-424-0450
www.kes.co.kr

Report No.:

KES-EM-22T0663-R1

Page (6) of (72)

Ethernet	Metal shielded RJ-45(10/100/1000BASE-T)
Video Compression	H.265/H.264: Main/High, MJPEG
Audio Compression	G.711 u-law /G.726 Selectable G.726(ADPCM) 8KHz, G.711 8KHz G.726: 16Kbps, 24Kbps, 32Kbps, 40Kbps AAC-LC: 48Kbps at 16KHz
Smart Codec	Manual(5ea area), WiseStreamII, WiseStreamIII(Based on AI engine)
Video Quality Adjustment	H.264/H.265: Target bitrate level control MJPEG: Target bitrate level control
Bitrate Control	H.264/H.265: CBR or VBR MJPEG: VBR
Streaming	Unicast(20 users) / Multicast Multiple streaming(Up to 10 profiles, 3 virtual channel support)
Protocol	IPv4, IPv6, TCP/IP, UDP/IP, RTP(UDP), RTP(TCP), RTCP,RTSP, NTP, HTTP, HTTPS, SSL/TLS, DHCP, FTP, SMTP, ICMP, IGMP, SNMPv1/v2c/v3(MIB-2), ARP, DNS, DDNS, QoS, UPnP, Bonjour, LLDP, SRTP (TCP, UDP Unicast)
Security	TPM 2.0 (FIPS 140-2 level 2) HTTPS(SSL) Login Authentication Digest Login Authentication IP Address Filtering User access log 802.1X Authentication(EAP-TLS, EAP-LEAP, EAP-PEAP MSCHAPv2) Device Certificate(Hanwha Techwin Root CA, pre-installed) Secure by default certificate(TBD) Secure OS/Boot/Storage, Verify firmware forgery
Application Programming Interface	ONVIF Profile S/G/T SUNAPI(HTTP API) Wisenet open platform
General	
Webpage Language	English, Korean, Chinese, French, Italian, Spanish, German, Japanese, Russian, Swedish,, Portuguese, Czech, Polish, Turkish, Dutch, Greek, Hungarian
Web Viewer	None
Edge Storage	Micro SD/SDHC/SDXC 2slot Max. 1TB (512GB * 2)

This report shall not be reproduced except in full, without the written approval of KES Co., Ltd.
The results shown in this test report refer only to the sample(s) tested unless otherwise stated.
The authenticity of the test report, contact kes@kes.co.kr

**KES Co., Ltd.**

3701, 40, Simin-daero 365beon-gil,
Dongan-gu, Anyang-si, Gyeonggi-do, 14057, Korea
Tel: +82-31-425-6200 / Fax: +82-31-424-0450
www.kes.co.kr

Report No.:

KES-EM-22T0663-R1

Page (7) of (72)

Memory	4GB RAM, 512MB Flash
Environmental & Electrical	
Operating Temperature / Humidity	-25 °C ~ 50 °C(-13°F ~ +122°F) * Maximum temperature : +55°C (intermittent) less than 95% RH(non-condensing) Humidity control /w GORE vent
Storage Temperature / Humidity	-50°C ~ +60°C(-58°F ~ +140°F) / Less than 90% RH
Certification	IP52/IK10
Input Voltage	PoE+(IEEE802.3at, Class4), 12VDC
Power Consumption	TBD Power redundancy failover
Mechanical	
Color / Material	White / Aluminum Hard-coated dome bubble
RAL Code	RAL9003
Product Dimensions / Weight	Ø160x125mm(6.30x4.92"), 1.6kg(3.53 lb) (TBD)
Compatible Conduit hole / Gangbox	1/2" (M20) single, double, 4" octagon, 4" square
Hanging Mount (Dome)	SBP-167HMW
DORI (EN62676-4 standard)	
Detect (25PPM/ 8PPF)	Wide: 44.8m(147.02ft) / Tele: 151.3m(496.29ft)
Observe (63PPM/ 19PPF)	Wide: 17.9m(58.81ft) / Tele: 60.5m(198.52ft)
Recognize (125PPM/ 38PPF)	Wide: 9.0m(29.4ft) / Tele: 30.3m(99.26ft)
Identify (250PPM/ 76PPF)	Wide: 4.5m(14.7ft) / Tele: 15.1m(49.63ft)

This report shall not be reproduced except in full, without the written approval of KES Co., Ltd.
The results shown in this test report refer only to the sample(s) tested unless otherwise stated.
The authenticity of the test report, contact kes@kes.co.kr



1.1 Test Voltage & Frequency

Unless indicated otherwise on the individual data sheet or test results, the test voltage and frequency was as indicated below.

☒ AC 230 V, 50 Hz ☒ PoE

1.2 Variant Model Differences

Not applicable

1.3 Device Modifications

Not applicable

1.4 Equipment Under Test

Description	Model Number	Serial Number	Manufacturer	Remarks
NETWORK CAMERA	XND-8083RV	-	HANWHA VISION VIETNAM COMPANY LIMITED	EUT

1.5 Support Equipments

Description	Model Number	Serial Number	Manufacturer	Remarks
AC/DC Adapter	2ACB022F	-	ChAnnel Well Technology (Guangzhou) Co.,Ltd.	-
PoE Adapter	PSE156G	-	-	-
Notebook	LG15N54	410NZGK015231	LG Electronics Inc.	-
Notebook Adapter	ADP-90WH B	84ZW19F1663	DELTA ELECTRONICS (JIANGSU) LTD.	-
Alarm	PRO-SL	-	SENSOR PRO	-
Button Alarm	-	-	-	-
Headset	K550	-	Britz®	-
SmartPhone	SM-N920S	-	Samsung	-
Micro SD Card	-	-	SanDisk	-

1.6 External I/O Cabling

■ DC Mode

Start		END		Cable Spec.	
Description	I/O Port	Description	I/O Port	Length	Shield
NETWORK CAMERA (EUT)	2 Pin	AC/DC Adapter	2 Pin	1.6	U
	RJ-45	Notebook	RJ-45	3.0	S
	Alarm OUT	Alarm	Alarm IN	4.0	U
	Alarm IN	Button Alarm	Alarm OUT	3.5	U
	3.5 mm	Headset	3.5 mm	1.8	U
	3.5 mm		3.5 mm	1.8	U
	Micro SD Card Slot	Micro SD Card	Micro SD Card Slot	-	-
Notebook	3.5 mm	SmartPhone	3.5 mm	1.1	U
	DC Jack	Notebook Adapter	DC Jack	1.9	U

* Unshielded=U, Shielded=S

■ PoE Mode

Start		END		Cable Spec.	
Description	I/O Port	Description	I/O Port	Length	Shield
NETWORK CAMERA (EUT)	RJ-45(PoE)	PoE Adapter	RJ-45(PoE)	3.0	S
	Alarm OUT	Alarm	Alarm IN	4.0	U
	Alarm IN	Button Alarm	Alarm OUT	3.5	U
	3.5 mm	Headset	3.5 mm	1.8	U
	3.5 mm		3.5 mm	1.8	U
	Micro SD Card Slot	Micro SD Card	Micro SD Card Slot	-	-
PoE Adapter	RJ-45(PoE)	Notebook	RJ-45(LAN)	2.0	S
Notebook	3.5 mm	SmartPhone	3.5 mm	1.1	U
	DC Jack	Notebook Adapter	DC Jack	1.9	U

* Unshielded=U, Shielded=S

1.7 EUT Operating Mode(s)

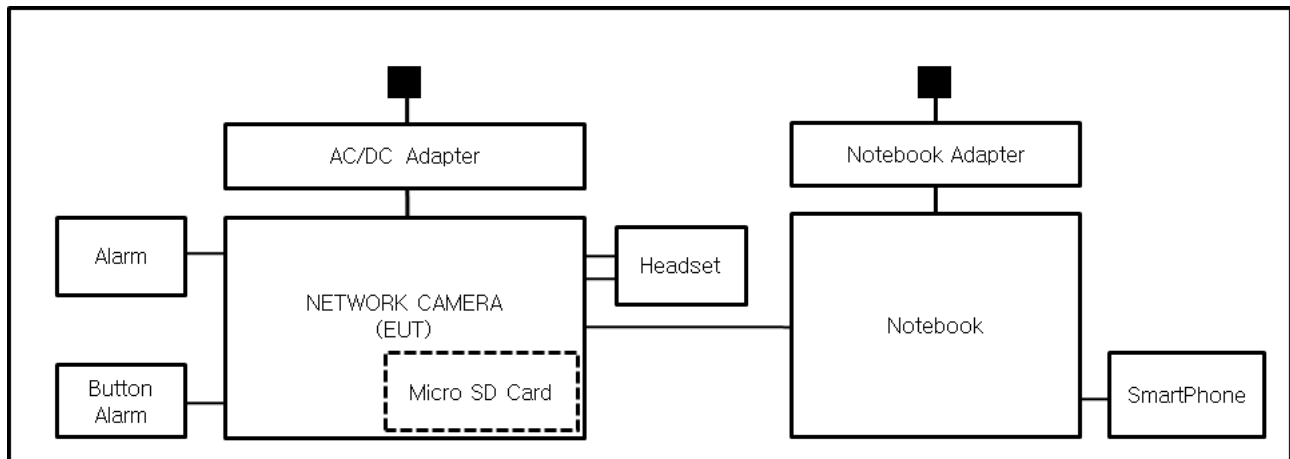
Test Mode	operating
DC Mode	Check the Normal Operation status. after testing, check if the recording is normally done on the Micro SD Card
PoE Mode	

EUT Test operating S/W		
Name	Version	Manufacture Company
Web Viewer	-	Hanwha Vision Co., Ltd

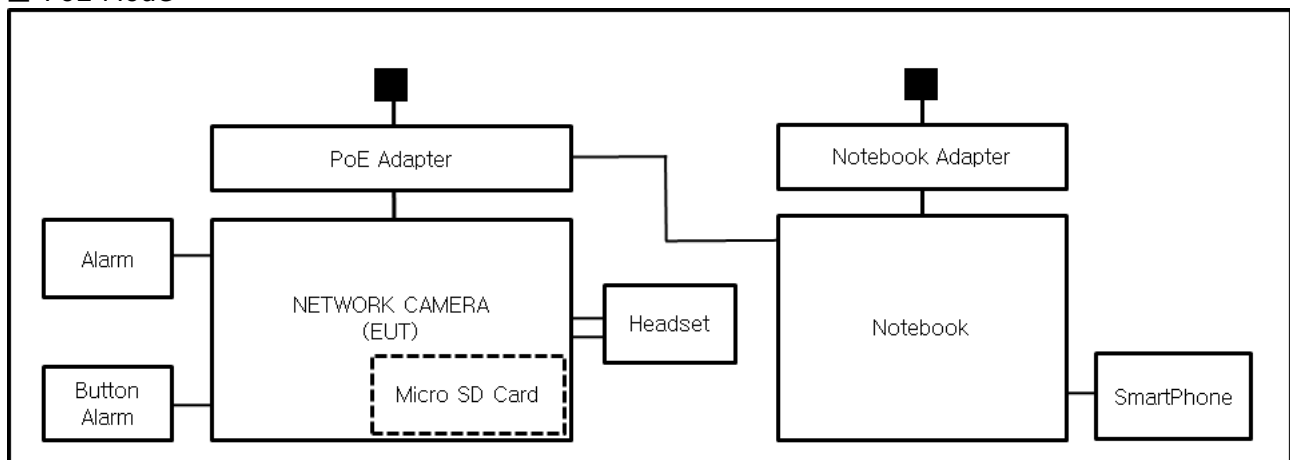
1.8 Configuration

■ AC Main
 □ DC Main

■ DC Mode



■ PoE Mode



This report shall not be reproduced except in full, without the written approval of KES Co., Ltd.
 The results shown in this test report refer only to the sample(s) tested unless otherwise stated.
 The authenticity of the test report, contact kes@kes.co.kr

1.9 Remarks when standards applied

The USB, VIDEO ports were excluded from the test as administrator ports.







1.10 Calibration Details of Equipment Used for Measurement

Test equipment and test accessories are calibrated on regular basis. The maximum time between calibrations is one year or what is recommended by the manufacturer, whichever is less.

1.11 Test Facility

The measurement facility is located at 473-21, Gayeo-ro, Yeosu-si, Gyeonggi-do, 12658, Korea, Republic of. The sites are constructed in conformance with the requirements of ANSI C63.4a-2017 and CISPR 16-1-4:2019

1.12 Laboratory Accreditations and Listings

Country	Agency	Scope of Accreditation	Logo
KOREA	RRA	EMI (3 m & 10 m Semi-Anechoic Chamber and conducted test site) EMS (ESD, RS, EFT/Burst, Surge, CS, Magnetic, Dips and interruptions)	 KR0100
International	KOLAS	EMI (3 m & 10 m Semi-Anechoic Chamber and conducted test site) EMS (ESD, RS, EFT/Burst, Surge, CS, Magnetic, Dips and interruptions)	 KT489
USA	FCC	3 m & 10 m Semi-Anechoic Chamber Conducted test site to perform FCC Part 15/18 measurements.	 KR0100
Canada	ISED	3 m & 10 m Semi-Anechoic Chamber and Conducted test site	 23298
JAPAN	VCCI	EMI (3 m & 10 m Semi-Anechoic Chamber and conducted test site)	 C-20136, T-20137, R-20181, G-20176
Europe	TÜV SÜD	EMI (3 m & 10 m Semi-Anechoic Chamber and conducted test site) EMS (ESD, RS, EFT/Burst, Surge, CS, Magnetic, Dips and interruptions)	 CARAT 001633 0004



2.0 Test Regulations

The emissions tests were performed according to following regulations:

☒ **EMC – Directive 2014/30/EU**

☒ EN 55032:2015/A11:2020

☒ Class A

☐ Class B

☒ EN 50130-4:2011

☒ EN 61000-3-2:2014

☒ EN 61000-3-3:2013

☒ **EMC – Regulations 2016**

☒ EN 55032:2015/A11:2020

☒ Class A

☐ Class B

☒ EN 50130-4:2011

☒ EN 61000-3-2:2014

☒ EN 61000-3-3:2013



2.1 Conducted Emissions at Mains Power Ports

Test Date

Jul. 11, 2022

Test Location

Electro wave Shieldroom #6

Test Equipment

Used	Description	Model Number	Manufacturer	Serial Number	Cal. Due
<input checked="" type="checkbox"/>	EMI Test S/W	EMC32	R & S	9.12.00	-
<input checked="" type="checkbox"/>	EMI TEST RECEIVER	ESR3	R & S	101783	12, 28, 2022
<input checked="" type="checkbox"/>	LISN	ENV216	R & S	101787	12, 27, 2022
<input checked="" type="checkbox"/>	LISN	ESH2-Z5	R & S	100450	12, 27, 2022
<input checked="" type="checkbox"/>	PULSE LIMITER	ESH3-Z2	R & S	101915	12, 27, 2022

Test Conditions

Temperature: (24,7 ± 0,2) °C

Relative Humidity: (44,8 ± 0,2) % R.H.

Frequency Range of Measurement

150 kHz to 30 MHz

Instrument Settings

IF Band Width: 9 kHz

Test Results

The requirements are:

- ☒ PASS
☐ NOT PASS
☐ NOT APPLICABLE

Remarks

See Appendix A for test data.

2.2 Conducted Emissions at Telecommunication Ports

Test Date

Jul. 11, 2022

Test Location

Electro wave Shieldroom #6

Test Equipment

Used	Description	Model Number	Manufacturer	Serial Number	Cal. Due
<input checked="" type="checkbox"/>	EMI Test S/W	EMC32	R & S	9.12.00	-
<input checked="" type="checkbox"/>	EMI TEST RECEIVER	ESR3	R & S	101783	12, 28, 2022
<input checked="" type="checkbox"/>	LISN	ENV216	R & S	101787	12, 27, 2022
<input checked="" type="checkbox"/>	LISN	ESH2-Z5	R & S	100450	12, 27, 2022
<input checked="" type="checkbox"/>	PULSE LIMITER	ESH3-Z2	R & S	101915	12, 27, 2022
<input type="checkbox"/>	8-WIRE ISN CAT3,5	ENY81	R & S	100174	12, 28, 2022
<input checked="" type="checkbox"/>	ISN	ISN S8	SCHWARZBECK	ISN-S8-0019	03, 07, 2023

Test Conditions

Temperature: (24,7 ± 0,2) °C

Relative Humidity: (44,8 ± 0,3) % R.H.

Frequency Range of Measurement

150 kHz to 30 MHz

Instrument Settings

IF Band Width: 9 kHz

Test Results

The requirements are:

- ☒ PASS
☐ NOT PASS
☐ NOT APPLICABLE

Remarks

- See Appendix A for test data.

- For Ethernet interfaces, measurements are required at the highest data rate supported by the interface.

**KES Co., Ltd.**

3701, 40, Simin-daero 365beon-gil,
Dongan-gu, Anyang-si, Gyeonggi-do, 14057, Korea
Tel: +82-31-425-6200 / Fax: +82-31-424-0450
www.kes.co.kr

Report No.:

KES-EM-22T0663-R1

Page (15) of (72)

2.3 Radiated Electric Field Emissions(Below 1 GHz)

Test Date

Jul. 11, 2022

Test Location☐ OPEN AREA TEST SITE #2☒ SEMI ANECHOIC CHAMBER #4(10m)**Test Equipment**

Used	Description	Model Number	Manufacturer	Serial Number	Cal. Due
<input checked="" type="checkbox"/>	EMI Test S/W	EP5/RE	TOYO Corporation	6.0.0	-
<input checked="" type="checkbox"/>	EMI TEST RECEIVER	ESU26	R & S	100551	03, 31, 2023
<input checked="" type="checkbox"/>	AMPLIFIER	SCU 01	R & S	100603	11, 24, 2022
<input checked="" type="checkbox"/>	TRILOG-BROADBAND ANTENNA	VULB9163	Schwarzbeck	715	12, 08, 2022
<input checked="" type="checkbox"/>	ATTENUATOR	8491A	HP	32173	03, 08, 2023

Test Conditions

Temperature: (24,5 ± 0,2) °C

Relative Humidity: (44,3 ± 0,4) % R.H.

Frequency Range of Measurement

30 MHz to 1 GHz

Instrument Settings

IF Band Width: 120 kHz

Test Results

The requirements are:

- ☒ PASS
☐ NOT PASS
☐ NOT APPLICABLE

RemarksSee Appendix A for test data.

This report shall not be reproduced except in full, without the written approval of KES Co., Ltd.
The results shown in this test report refer only to the sample(s) tested unless otherwise stated.
The authenticity of the test report, contact kes@kes.co.kr

**KES Co., Ltd.**

3701, 40, Simin-daero 365beon-gil,
Dongan-gu, Anyang-si, Gyeonggi-do, 14057, Korea
Tel: +82-31-425-6200 / Fax: +82-31-424-0450
www.kes.co.kr

Report No.:

KES-EM-22T0663-R1

Page (16) of (72)

2.4 Radiated Electric Field Emissions(Above 1 GHz)

Test Date

Jul. 12, 2022

Test Location

SEMI ANECHOIC CHAMBER #5

Test Equipment

Used	Description	Model Number	Manufacturer	Serial Number	Cal. Due
<input checked="" type="checkbox"/>	EMI Test S/W	EP5/RE	TOYO Corporation	6.0.0	-
<input checked="" type="checkbox"/>	EMI TEST RECEIVER	ESR7	R & S	101190	08, 03, 2022
<input checked="" type="checkbox"/>	PREAMPLIFIER	8449B	AGILENT	3008A01967	04, 01, 2023
<input checked="" type="checkbox"/>	DOUBLE RIDGED HORN ANTENNA	SAS-571	A.H.SYSTEM,INC	781	03, 03, 2023

Test Conditions

Temperature: (24,2 ± 0,3) °C

Relative Humidity: (44,1 ± 0,4) % R.H.

Frequency Range of Measurement

1 GHz to 6 GHz

Instrument Settings

IF Band Width: 1 MHz

Test Results

The requirements are:

- ☒ PASS
☐ NOT PASS
☐ NOT APPLICABLE

RemarksSee Appendix A for test data.

This report shall not be reproduced except in full, without the written approval of KES Co., Ltd.
The results shown in this test report refer only to the sample(s) tested unless otherwise stated.
The authenticity of the test report, contact kes@kes.co.kr



2.5 Harmonic Current Emissions

Test Date

Jul. 12, 2022

Test Location

Electro wave Shieldroom #3

Test Equipment

Used	Description	Model Number	Manufacturer	Serial Number	Cal. Due
<input checked="" type="checkbox"/>	EMI Test S/W	net.control	EM TEST	2.1.4	-
<input checked="" type="checkbox"/>	DIGITAL POWER ANALYZER	DPA 500N	EM TEST	V1024106759	04, 06, 2023
<input checked="" type="checkbox"/>	POWER SOURCE	ACS 500N6	EM TEST	V1024106760	-

Test Conditions

Temperature: (24,4 ± 0,2) °C
Relative Humidity: (46,4 ± 0,2) % R.H.

Classification of Equipment for Harmonic Current Emissions

- ☒ Class A
☐ Class B
☐ Class C(Below 25 W)
☐ Class C(Above 25 W)
☐ Class D

Test Results

The requirements are:

- ☒ PASS
☐ NOT PASS
☐ NOT APPLICABLE

Remarks

See Appendix A for test data.

**KES Co., Ltd.**

3701, 40, Simin-daero 365beon-gil,
Dongan-gu, Anyang-si, Gyeonggi-do, 14057, Korea
Tel: +82-31-425-6200 / Fax: +82-31-424-0450
www.kes.co.kr

Report No.:

KES-EM-22T0663-R1

Page (18) of (72)

2.6 Voltage Fluctuations and Flicker

Test Date

Jul. 12, 2022

Test Location

Electro wave Shieldroom #3

Test Equipment

Used	Description	Model Number	Manufacturer	Serial Number	Cal. Due
<input checked="" type="checkbox"/>	EMI Test S/W	net.control	EM TEST	2.1.4	-
<input checked="" type="checkbox"/>	DIGITAL POWER ANALYZER	DPA 500N	EM TEST	V1024106759	04, 06, 2023
<input checked="" type="checkbox"/>	POWER SOURCE	ACS 500N6	EM TEST	V1024106760	-

Test Conditions

Temperature: (24,4 ± 0,4) °C

Relative Humidity: (46,4 ± 0,6) % R.H.

Test Results

The requirements are:

- ☒ PASS
☐ NOT PASS
☐ NOT APPLICABLE

RemarksSee Appendix A for test data.

This report shall not be reproduced except in full, without the written approval of KES Co., Ltd.
The results shown in this test report refer only to the sample(s) tested unless otherwise stated.
The authenticity of the test report, contact kes@kes.co.kr

3.0 Criteria for compliance

Criteria for compliance was based on the following guidelines:

EN 50130-4:2011 Alarm systems-Part 4: Electromagnetic compatibility Product family
standard: Immunity requirements for components of fire, intruder and social alarm systems

The variety and the diversity of the apparatus within the scope of this document makes it difficult to define precise criteria for the evaluation of the immunity test results.

If as a result of the application of the tests defined in this standard, the apparatus becomes dangerous or unsafe then the apparatus shall be deemed to have failed the test.

A functional description and a definition of performance by the manufacture and noted in the test report, based on the following criteria:

Electrostatic discharge

There shall be no damage, malfunction or change of status due to the conditioning.

Flickering of an indicator during the application of discharge is permissible, providing that is no residual change in the EUT or any change in outputs, which could be interpreted by associated equipment as a change.

Radiated electromagnetic fields

There shall be no damage, malfunction or change of status due to the conditioning.

Flickering of an indicator during the application of discharge is permissible, providing which could be interpreted by associated equipment as a change, and no such

Flickering of indicators occurs at a field strength of 3 V/m.

For components of CCTV systems, where the picture is allowed at 10 V/m, providing.

(a) there is no permanent damage or change to EUT

(e.g. no corruption of memory or changes to programmable setting etc.)

(b) at 3 V/m, any deterioration of the picture is so minor that the system could still be used; and

(c) there is no observable deterioration of the picture at 1 V/m.

Fast transient burst / slow high energy voltage surge

There shall be no damage, malfunction or change of status due to the conditioning.
Flickering of an indicator during the application of discharge is permissible, providing
That there is no residual is permissible, providing that there is no residual change in the EUT or
any
change in outputs, which could be interpreted by associated equipment as a change.

Conducted RF immunity

There shall be no damage, malfunction or change of status due to the conditioning.
Flickering of an indicator during the application of discharge is permissible, providing
That there is no residual is permissible, providing that there is no residual change in the EUT or
any
change in outputs, which could be interpreted by associated equipment as a change,
and no such flickering of indicators oeuvres at $U = 130 \text{ dB}\mu\text{V}$.
For component of CCTV systems, where the status is monitored by observing the TV picture,
then deterioration of the picture is allowed at $U = 140 \text{ dB}\mu\text{V}$, providing:
(a) there is no permanent damage or change to the EUT
(e.g. no corruption of memory or changes to programmable settings etc.)
(b) at $U = 130 \text{ dB}\mu\text{V}$, any deterioration of the picture is so minor that the system could
still be used; and
(c) there in no observable deterioration of the picture at $U = 120 \text{ dB}\mu\text{V}$.

Voltage dip/interruption / Voltage variation

There shall be no damage, malfunction or change of status due to the conditioning.
Flickering of an indicator during the conditioning is permissible, providing that there is no
residual
change in the EUT or any change in outputs, which could be interpreted by associated
equipment
as a change. The EUT shall meet the acceptance criteria for the functional test, after the
conditioning.



3.1 Electrostatic Discharge

Reference Standard

EN 61000-4-2:2009

Test Date

Jul. 18, 2022

Test Location

EMS-ESD: Electro wave Shieldroom #7

Test Equipment

Used	Description	Model Number	Manufacturer	Serial Number	Cal. Due
<input checked="" type="checkbox"/>	ESD SIMULATOR	ESS-2000	Noise Ken	ESS01Z0454	02, 24, 2023
<input checked="" type="checkbox"/>	HCP	-	KES	-	-
<input checked="" type="checkbox"/>	VCP	-	Noise Ken	-	-

Test Conditions

Temperature: (24,8 ± 0,1) °C
Relative Humidity: (44,4 ± 0,1) % R.H.
Atmospheric Pressure: (100,0 ± 0,0) kPa

Test Specifications

Discharge Factor: ≥ 1 s

Discharge Impedance: 330 ohm / 150 pF

Kind of Discharge: Air, Contact (direct and indirect)

Polarity: Positive and Negative

Number of Discharge: 10 at all locations for Air discharge
10 at all locations for Contact discharge

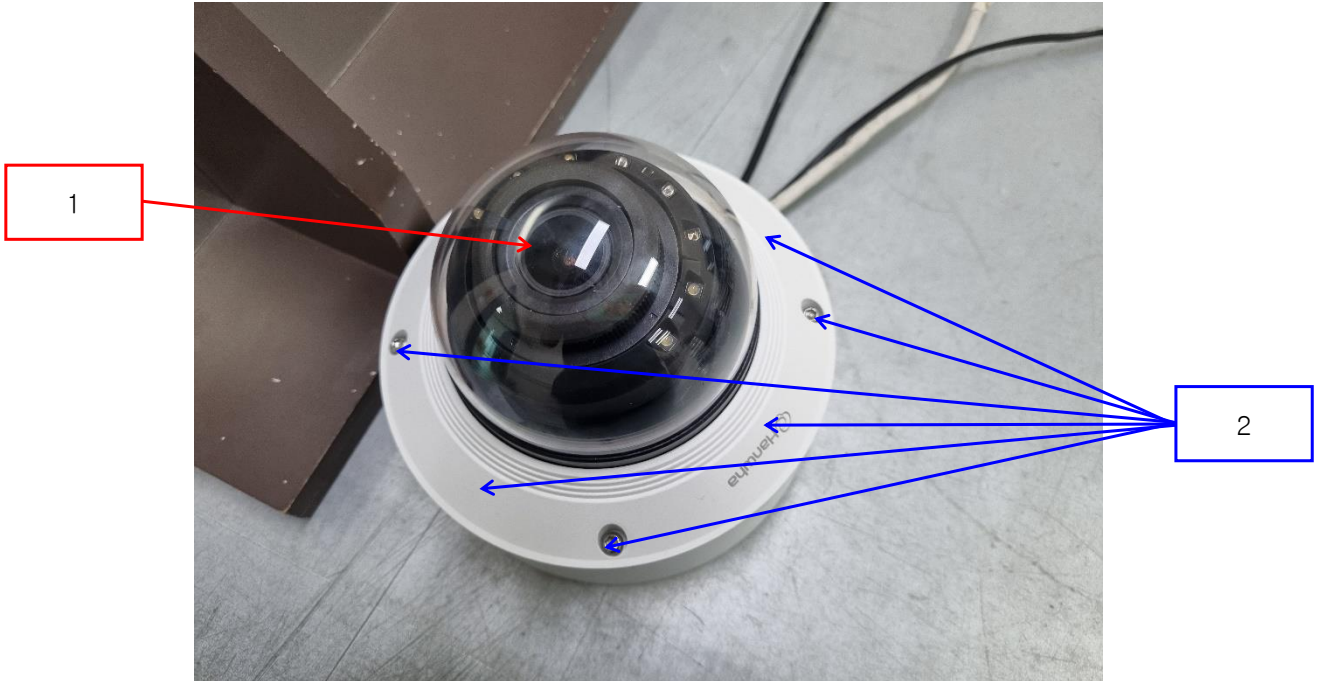
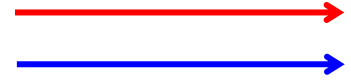
Discharge Voltage:	Contact	Air	HCP	VCP
	<input type="checkbox"/> 2 kV	<input checked="" type="checkbox"/> 2 kV	<input type="checkbox"/> 2 kV	<input type="checkbox"/> 2 kV
	<input type="checkbox"/> 4 kV	<input checked="" type="checkbox"/> 4 kV	<input type="checkbox"/> 4 kV	<input type="checkbox"/> 4 kV
	<input checked="" type="checkbox"/> 6 kV	<input type="checkbox"/> 6 kV	<input checked="" type="checkbox"/> 6 kV	<input checked="" type="checkbox"/> 6 kV
	<input type="checkbox"/> 8 kV	<input checked="" type="checkbox"/> 8 kV	<input type="checkbox"/> 8 kV	<input type="checkbox"/> 8 kV
	<input type="checkbox"/> 15 kV	<input type="checkbox"/> 15 kV	<input type="checkbox"/> 15 kV	<input type="checkbox"/> 15 kV

Notes: HCP: Horizontal coupling plane
VCP: Vertical coupling plane

Required Performance Criteria: ☒ Complied

Location of Discharge:

Air
Contact



**KES Co., Ltd.**

3701, 40, Simin-daero 365beon-gil,
Dongan-gu, Anyang-si, Gyeonggi-do, 14057, Korea
Tel: +82-31-425-6200 / Fax: +82-31-424-0450
www.kes.co.kr

Report No.:

KES-EM-22T0663-R1

Page (23) of (72)

Test Data

■ DC Mode

No.	Test Point	Discharge Method	Observations	Remarks
1	HCP Contact	Contact Discharge	Complied	-
2	VCP Contact	Contact Discharge	Complied	-

Direct Discharge

No.	Test Point	Discharge Method	Observations	Remarks
1	Around the Lens	Air Discharge	Complied	-
2	Enclosure, Screw	Contact Discharge	Complied	-

■ PoE Mode

Indirect Discharge

No.	Test Point	Discharge Method	Observations	Remarks
1	HCP Contact	Contact Discharge	Complied	-
2	VCP Contact	Contact Discharge	Complied	-

Direct Discharge

No.	Test Point	Discharge Method	Observations	Remarks
1	Around the Lens	Air Discharge	Complied	-
2	Enclosure, Screw	Contact Discharge	Complied	-

Note: "Blank" = Not performed

Observations:

Complied – No degradation of function

Test Results

- ☒ PASS Required Performance Criteria
☐ NOT PASS Required Performance Criteria

RemarksPASS Required Performance Criteria

This report shall not be reproduced except in full, without the written approval of KES Co., Ltd.
The results shown in this test report refer only to the sample(s) tested unless otherwise stated.
The authenticity of the test report, contact kes@kes.co.kr

3.2 Radiated Electric Field Immunity

Reference Standard

EN IEC 61000-4-3:2020

Test Date

Jul. 16, 2022

Test Location

EMS-RS: ☐ SEMI ANECHOIC CHAMBER #2 ☒ SEMI ANECHOIC CHAMBER #3

Test Equipment

Used	Description	Model Number	Manufacturer	Serial Number	Cal. Due
<input checked="" type="checkbox"/>	EMS Test S/W	EMC32	R & S	10.10.02	-
<input checked="" type="checkbox"/>	SIGNAL GENERATOR	SMB 100A	Rohde & Schwarz	108252	08, 03, 2022
<input checked="" type="checkbox"/>	HIGH POWER DUAL AMP	SSA532	SUNGSAN	SSA532-001	-
<input checked="" type="checkbox"/>	POWER METER	E4419B	Agilent	GB40203000	03, 31, 2023
<input checked="" type="checkbox"/>	AVERAGE POWER SENSOR	E9301A	Agilent	MY52170007	04, 04, 2023
<input checked="" type="checkbox"/>	AVERAGE POWER SENSOR	E9301A	Agilent	MY41498669	04, 04, 2023
<input checked="" type="checkbox"/>	STACKED DOUBLE LOG-PER- ANTENNA	STPL9128 E	Schwarzbeck	9128ES-121	-
<input checked="" type="checkbox"/>	DOUBLE RIDGED HORN ANTENNA	SAS-571	A.H.SYSTEM,INC	781	03, 03, 2023

Test Conditions

Temperature: (24,5 ± 0,5) °C
Relative Humidity: (44,1 ± 0,7) % R.H.
Atmospheric Pressure: (99,9 ± 0,0) kPa



KES Co., Ltd.

3701, 40, Simin-daero 365beon-gil,
Dongan-gu, Anyang-si, Gyeonggi-do, 14057, Korea
Tel: +82-31-425-6200 / Fax: +82-31-424-0450
www.kes.co.kr

Report No.:

KES-EM-22T0663-R1

Page (25) of (72)

Test Specifications

Antenna Polarization: Horizontal & vertical unless indicated otherwise

Antenna Distance: ☒ 3 m

Field Strength: ☐ 1 V/m ☐ 3 V/m
☒ 10 V/m

Frequency Range: ☐ 80 MHz to 1 GHz ☐ 1,4 GHz to 2,7 GHz
☒ 80 MHz to 2,7 GHz

Modulation: ☒ AM, 80 %, 1 kHz sine wave
☒ PM, 1 Hz (0,5 s ON : 0,5 s OFF)

Frequency step: ☒ 1 % step

Dwell Time: ☐ 1 s ☒ 3 s

of Sides Radiated: ☒ 4

Required Performance Criteria: ☒ Complied

This report shall not be reproduced except in full, without the written approval of KES Co., Ltd.
The results shown in this test report refer only to the sample(s) tested unless otherwise stated.
The authenticity of the test report, contact kes@kes.co.kr

**KES Co., Ltd.**

3701, 40, Simin-daero 365beon-gil,
Dongan-gu, Anyang-si, Gyeonggi-do, 14057, Korea
Tel: +82-31-425-6200 / Fax: +82-31-424-0450
www.kes.co.kr

Report No.:

KES-EM-22T0663-R1

Page (26) of (72)

Test Data

■ DC Mode

Side Exposed	Observations	
	Horizontal	Vertical
Front	Complied	Complied
Right	Complied	Complied
Back	Complied	Complied
Left	Complied	Complied

■ PoE Mode

Side Exposed	Observations	
	Horizontal	Vertical
Front	Complied	Complied
Right	Complied	Complied
Back	Complied	Complied
Left	Complied	Complied

Note: "Blank" = Not performed

Observations:

Complied – No degradation of function

Test Results

- ☒ PASS Required Performance Criteria
☐ NOT PASS Required Performance Criteria

RemarksPASS Required Performance Criteria

This report shall not be reproduced except in full, without the written approval of KES Co., Ltd.
The results shown in this test report refer only to the sample(s) tested unless otherwise stated.
The authenticity of the test report, contact kes@kes.co.kr

3.3 Electrical Fast Transients/Bursts

Reference Standard

EN 61000-4-4:2012

Test Date

Jul. 18, 2022

Test Location

EMS-EFT: Electro wave Shieldroom #7

Test Equipment

Used	Description	Model Number	Manufacturer	Serial Number	Cal. Due
<input checked="" type="checkbox"/>	EMS Test S/W	iec.control	EM TEST	5.4.8	-
<input checked="" type="checkbox"/>	ULTRA COMPACT SIMULATOR	UCS 500N7	EM TEST	P1608172950	12, 03, 2022
<input checked="" type="checkbox"/>	MOTOR VARIAC	MV2616	EM TEST	P1552169719	03, 31, 2023
<input checked="" type="checkbox"/>	CAPACITIVE COUPLING CLAMP	HFK	EM TEST	P1633183115	12, 03, 2022

Test Conditions

Temperature: (24,8 ± 0,2) °C
Relative Humidity: (44,4 ± 0,2) % R.H.
Atmospheric Pressure: (100,0 ± 0,0) kPa

Test Specifications

Pulse Amplitude & Polarity:
(AC Power Lines) ☐ ± 1.0 kV ☒ ± 2.0 kV
☐ ± 4.0 kV

Pulse Amplitude & Polarity:
(Other supply / Signal Lines) ☐ ± 0.5 kV ☒ ± 1.0 kV
☐ ± 2.0 kV

Burst Period: ☒ 300 ms ☐ 2 s

Repetition Rate: ☐ 5 kHz ☒ 100 kHz

Duration of Test Voltage: ☒ ≥ 1 min

Required Performance Criteria: ☒ Complied

Test Data

■ DC Mode

☒ Input a.c. power ports – Coupling/Decoupling Network used

Mode of Application	Observations	
	(+) Burst (kV)	(-) Burst (kV)
L	Complied	Complied
N	Complied	Complied
PE	-	-
L – N	Complied	Complied
L – PE	-	-
N – PE	-	-
L – N – PE	-	-

☐ Input d.c. power ports – Coupling/Decoupling Network used

Mode of Application	Observations	
	(+) Burst (kV)	(-) Burst (kV)
-	-	-

☒ Signal ports and telecommunication ports – Coupling Clamp used

Mode of Application	Observations	
	(+) Burst (kV)	(-) Burst (kV)
RJ-45	Complied	Complied
Alarm IN	Complied	Complied
Alarm OUT	Complied	Complied

☒ PoE Mode

☐ Input a.c. power ports – Coupling/Decoupling Network used

Mode of Application	Observations	
	(+) Burst (kV)	(-) Burst (kV)
L	-	-
N	-	-
PE	-	-
L – N	-	-
L – PE	-	-
N – PE	-	-
L – N – PE	-	-

☐ Input d.c. power ports – Coupling/Decoupling Network used

Mode of Application	Observations	
	(+) Burst (kV)	(-) Burst (kV)
-	-	-

☒ Signal ports and telecommunication ports – Coupling Clamp used

Mode of Application	Observations	
	(+) Burst (kV)	(-) Burst (kV)
RJ-45(PoE)	Complied	Complied
Alarm IN	Complied	Complied
Alarm OUT	Complied	Complied

Note: “Blank” = Not performed

Observations:

Complied – No degradation of function

Test Results

☒ PASS Required Performance Criteria

☐ NOT PASS Required Performance Criteria

Remarks

PASS Required Performance Criteria

**KES Co., Ltd.**

3701, 40, Simin-daero 365beon-gil,
Dongan-gu, Anyang-si, Gyeonggi-do, 14057, Korea
Tel: +82-31-425-6200 / Fax: +82-31-424-0450
www.kes.co.kr

Report No.:

KES-EM-22T0663-R1

Page (30) of (72)

3.4 Surge Transients

Reference Standard

EN 61000-4-5:2014/A1:2017

Test Date

Jul. 17, 2022

Test Location

EMS-Surge: Electro wave Shieldroom #7

Test Equipment

Used	Description	Model Number	Manufacturer	Serial Number	Cal. Due
<input checked="" type="checkbox"/>	EMS Test S/W	iec.control	EM TEST	5.4.8	-
<input checked="" type="checkbox"/>	ULTRA COMPACT SIMULATOR	UCS 500N7	EM TEST	P1608172950	12, 03, 2022
<input checked="" type="checkbox"/>	MOTOR VARIAC	MV2616	EM TEST	P1552169719	03, 31, 2023
<input checked="" type="checkbox"/>	CDN	CNV 508N1	EM TEST	P1610176296	12, 03, 2022

Test Conditions

Temperature: (24,5 ± 0,3) °C
Relative Humidity: (44,0 ± 0,4) % R.H.
Atmospheric Pressure: (99,7 ± 0,0) kPa

This report shall not be reproduced except in full, without the written approval of KES Co., Ltd.
The results shown in this test report refer only to the sample(s) tested unless otherwise stated.
The authenticity of the test report, contact kes@kes.co.kr



KES Co., Ltd.

3701, 40, Simin-daero 365beon-gil,
Dongan-gu, Anyang-si, Gyeonggi-do, 14057, Korea
Tel: +82-31-425-6200 / Fax: +82-31-424-0450
www.kes.co.kr

Report No.:

KES-EM-22T0663-R1

Page (31) of (72)

Test Specifications

AC Power Lines

Source Impedance: 12 ohm for common Mode and 2 ohm for differential Mode

Surge Amplitude :

Common Mode

☒ (0,5 / 1,0 / 2,0) kV

Differential Mode

☒ (0,5 / 1,0) kV

Number of Surges:

☒ 5 surges per angle

Angle:

☒ 0°, 90°, 180°, 270° (input a.c. power port)

Polarity:

☒ Positive & Negative

Repetition Rate:

☐ 1 surge per min ☒ 1 surge per 30 sec.

Required Performance Criteria: ☒ Complied

Other supply / Signal Lines

Source Impedance:

42 ohm for common Mode

Surge Amplitude:

Common Mode

☒ (0,5 / 1,0) kV

Number of Surges:

☒ 5 Surges

Polarity:

☒ Positive & Negative

Repetition Rate:

☒ 1 surge per min ☐ 1 surge per 30 sec.

Required Performance Criteria: ☒ Complied

**KES Co., Ltd.**

3701, 40, Simin-daero 365beon-gil,
Dongan-gu, Anyang-si, Gyeonggi-do, 14057, Korea
Tel: +82-31-425-6200 / Fax: +82-31-424-0450
www.kes.co.kr

Report No.:

KES-EM-22T0663-R1

Page (32) of (72)

Test Data

■ DC Mode

☒ Line to Line – Differential Mode

Mode of Application	Observations	
	(+) Surge (kV)	(-) Surge (kV)
L – N	Complied	Complied

☒ Line to Earth – Common Mode

Mode of Application	Observations	
	(+) Surge (kV)	(-) Surge (kV)
L – PE	Complied	Complied
N – PE	Complied	Complied

Signal Lines☒ Line to Earth – Common Mode

Mode of Application	Coupling Method	Observations	
		(+) Surge (kV)	(-) Surge (kV)
RJ-45	CDN	Complied	Complied
	LINE	Complied	Complied

This report shall not be reproduced except in full, without the written approval of KES Co., Ltd.
The results shown in this test report refer only to the sample(s) tested unless otherwise stated.
The authenticity of the test report, contact kes@kes.co.kr

**KES Co., Ltd.**

3701, 40, Simin-daero 365beon-gil,
Dongan-gu, Anyang-si, Gyeonggi-do, 14057, Korea
Tel: +82-31-425-6200 / Fax: +82-31-424-0450
www.kes.co.kr

Report No.:

KES-EM-22T0663-R1

Page (33) of (72)

☒ PoE Mode☐ Line to Line – Differential Mode

Mode of Application	Observations	
	(+) Surge (kV)	(-) Surge (kV)
L – N	-	-

☐ Line to Earth – Common Mode

Mode of Application	Observations	
	(+) Surge (kV)	(-) Surge (kV)
L – PE	-	-
N – PE	-	-

Signal Lines☒ Line to Earth – Common Mode

Mode of Application	Coupling Method	Observations	
		(+) Surge (kV)	(-) Surge (kV)
RJ-45(PoE)	CDN	Complied	Complied
	LINE	Complied	Complied

Note: "Blank" = Not performed

Observations:

Complied – No degradation of function

Test Results☒ PASS Required Performance Criteria☐ NOT PASS Required Performance Criteria**Remarks**PASS Required Performance Criteria

This report shall not be reproduced except in full, without the written approval of KES Co., Ltd.

The results shown in this test report refer only to the sample(s) tested unless otherwise stated.

The authenticity of the test report, contact kes@kes.co.kr

**KES Co., Ltd.**

3701, 40, Simin-daero 365beon-gil,
Dongan-gu, Anyang-si, Gyeonggi-do, 14057, Korea
Tel: +82-31-425-6200 / Fax: +82-31-424-0450
www.kes.co.kr

Report No.:

KES-EM-22T0663-R1

Page (34) of (72)

3.5 Conducted Disturbance

Reference Standard

EN 61000-4-6:2014

Test Date

Jul. 16, 2022

Test Location

EMS-CS: Electro wave Shieldroom #6

Test Equipment

Used	Description	Model Number	Manufacturer	Serial Number	Cal. Due
<input checked="" type="checkbox"/>	EMS Test S/W	icd.control	EM TEST	5.3.12	-
<input checked="" type="checkbox"/>	CONTINUOUS WAVE SIMULATOR	CWS 500N1.4	EM TEST	P1602169880	11, 24, 2022
<input checked="" type="checkbox"/>	ATTENUATOR	ATT 6/80	EM TEST	P1614178148	11, 24, 2022
<input checked="" type="checkbox"/>	CDN	CDN M016	TESEQ	43694	11, 24, 2022
<input checked="" type="checkbox"/>	CDN	CDN M016	TESEQ	43697	11, 24, 2022
<input checked="" type="checkbox"/>	CDN	CDN ST08A	TESEQ	43886	11, 24, 2022
<input checked="" type="checkbox"/>	EM CLAMP	KEMZ 801A	TESEQ	44099	11, 25, 2022

Test Conditions

Temperature: (24,6 ± 0,4) °C
Relative Humidity: (45,4 ± 0,4) % R.H.
Atmospheric Pressure: (99,5 ± 0,0) kPa

This report shall not be reproduced except in full, without the written approval of KES Co., Ltd.
The results shown in this test report refer only to the sample(s) tested unless otherwise stated.
The authenticity of the test report, contact kes@kes.co.kr



KES Co., Ltd.

3701, 40, Simin-daero 365beon-gil,
Dongan-gu, Anyang-si, Gyeonggi-do, 14057, Korea
Tel: +82-31-425-6200 / Fax: +82-31-424-0450
www.kes.co.kr

Report No.:

KES-EM-22T0663-R1

Page (35) of (72)

Test Specifications

Frequency range:

☒ 150 kHz to 100 MHz

☐ 150 kHz to 80 MHz

Voltage Level:

☐ 1 Vrms

☐ 3 Vrms

☒ 10 Vrms

Modulation:

☒ AM, 80 %, 1 kHz sine wave

☒ PM, 1 Hz (0,5 s ON : 0,5 s OFF)

Frequency step:

☒ 1 % step

Dwell Time:

☐ 1 s

☒ 3 s

Required Performance Criteria: ☒ Complied

This report shall not be reproduced except in full, without the written approval of KES Co., Ltd.
The results shown in this test report refer only to the sample(s) tested unless otherwise stated.
The authenticity of the test report, contact kes@kes.co.kr

**KES Co., Ltd.**

3701, 40, Simin-daero 365beon-gil,
Dongan-gu, Anyang-si, Gyeonggi-do, 14057, Korea
Tel: +82-31-425-6200 / Fax: +82-31-424-0450
www.kes.co.kr

Report No.:

KES-EM-22T0663-R1

Page (36) of (72)

Test Data**■ DC Mode**☒ Input a.c. power ports

Coupling Location (Line Stressed)	Coupling Method	Observations
L – N	CDN	Complied

☐ Input d.c. power ports

Coupling Location (Line Stressed)	Coupling Method	Observations
-	-	-

☒ Signal ports and telecommunication ports

Coupling Location (Line Stressed)	Coupling Method	Observations
RJ-45	CDN	Complied
Alarm IN	Clamp	Complied
Alarm OUT	Clamp	Complied

This report shall not be reproduced except in full, without the written approval of KES Co., Ltd.
The results shown in this test report refer only to the sample(s) tested unless otherwise stated.
The authenticity of the test report, contact kes@kes.co.kr

**KES Co., Ltd.**

3701, 40, Simin-daero 365beon-gil,
Dongan-gu, Anyang-si, Gyeonggi-do, 14057, Korea
Tel: +82-31-425-6200 / Fax: +82-31-424-0450
www.kes.co.kr

Report No.:

KES-EM-22T0663-R1

Page (37) of (72)

■ PoE Mode☐ Input a.c. power ports

Coupling Location (Line Stressed)	Coupling Method	Observations
L – N – PE	CDN	-

☐ Input d.c. power ports

Coupling Location (Line Stressed)	Coupling Method	Observations
-	-	-

☒ Signal ports and telecommunication ports

Coupling Location (Line Stressed)	Coupling Method	Observations
RJ-45(PoE)	CDN	Complied
Alarm IN	Clamp	Complied
Alarm OUT	Clamp	Complied

Notes: CDN = Coupling Decoupling Network
"blank" = Not performed

Observations:

Complied – No degradation of function

Test Results

- ☒ PASS Required Performance Criteria
☐ NOT PASS Required Performance Criteria

RemarksPASS Required Performance Criteria

This report shall not be reproduced except in full, without the written approval of KES Co., Ltd.
The results shown in this test report refer only to the sample(s) tested unless otherwise stated.
The authenticity of the test report, contact kes@kes.co.kr

**KES Co., Ltd.**

3701, 40, Simin-daero 365beon-gil,
Dongan-gu, Anyang-si, Gyeonggi-do, 14057, Korea
Tel: +82-31-425-6200 / Fax: +82-31-424-0450
www.kes.co.kr

Report No.:

KES-EM-22T0663-R1

Page (38) of (72)

3.6 Voltage Dips and Short Interruptions

Reference Standard

EN IEC 61000-4-11:2020

Test Date

Jul. 18, 2022

Test Location

EMS-Voltage dip: Electro wave Shieldroom #7

Test Equipment

Used	Description	Model Number	Manufacturer	Serial Number	Cal. Due
<input checked="" type="checkbox"/>	EMS Test S/W	iec.control	EM TEST	5.4.8	-
<input checked="" type="checkbox"/>	ULTRA COMPACT SIMULATOR	UCS 500N7	EM TEST	P1608172950	03, 31, 2023
<input checked="" type="checkbox"/>	MOTOR VARIAC	MV2616	EM TEST	P1552169719	03, 31, 2023

Test Conditions

Temperature: (24,8 ± 0,2) °C
Relative Humidity: (44,4 ± 0,1) % R.H.
Atmospheric Pressure: (100,0 ± 0,0) kPa

This report shall not be reproduced except in full, without the written approval of KES Co., Ltd.
The results shown in this test report refer only to the sample(s) tested unless otherwise stated.
The authenticity of the test report, contact kes@kes.co.kr



KES Co., Ltd.

3701, 40, Simin-daero 365beon-gil,
Dongan-gu, Anyang-si, Gyeonggi-do, 14057, Korea
Tel: +82-31-425-6200 / Fax: +82-31-424-0450
www.kes.co.kr

Report No.:
KES-EM-22T0663-R1
Page (39) of (72)

Test Specifications & Observations/Remarks

■ DC Mode

- Voltage Dips and Short Interruptions

Test Level	Duration [in period/ms (50 Hz)]	Results
<input checked="" type="checkbox"/> 20 % dip	<input checked="" type="checkbox"/> 250 / 5 000	<u>Complied</u>
<input checked="" type="checkbox"/> 30 % dip	<input checked="" type="checkbox"/> 25 / 500	<u>Complied</u>
<input checked="" type="checkbox"/> 60 % dip	<input checked="" type="checkbox"/> 10 / 200	<u>Complied</u>
<input checked="" type="checkbox"/> 100 % dip	<input checked="" type="checkbox"/> 250 / 5 000	<u>Degradation</u>

- Voltage variations

<input checked="" type="checkbox"/> Unom + 10 %	<input checked="" type="checkbox"/> 253.0 V (ac)	<u>Complied</u>
<input checked="" type="checkbox"/> Unom - 15 %	<input checked="" type="checkbox"/> 195.5 V (ac)	<u>Complied</u>

Observations:

Complied – No degradation of function

Degradation - See "Remarks "

Test Results

- ☒ PASS Required Performance Criteria
☐ NOT PASS Required Performance Criteria
☐ NOT APPLICABLE

Remarks

During the test(100%, 250cycle), EUT was turned off but after the test, it was recovered without operator's intervention.

APPENDIX A – TEST DATA

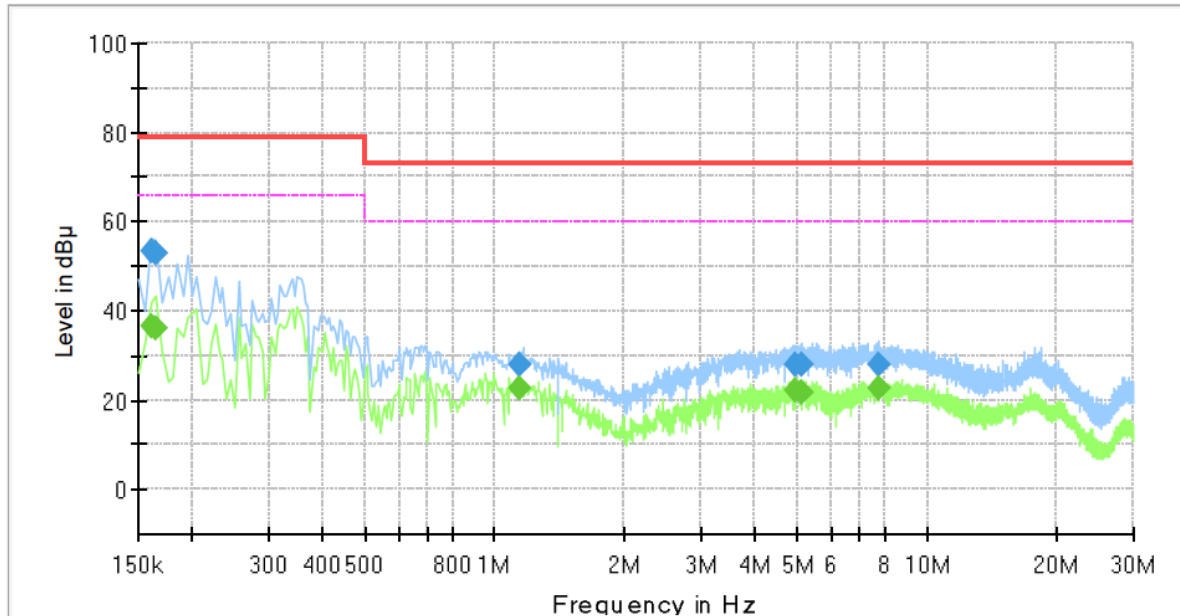
Conducted Emissions at Mains Power Ports

■ DC Mode

[HOT]

Common Information

Test Description:	Conducted Emission
Model No.:	XND-8083RV
Phase:	H
Mode:	
Operator Name:	KES



Final Result

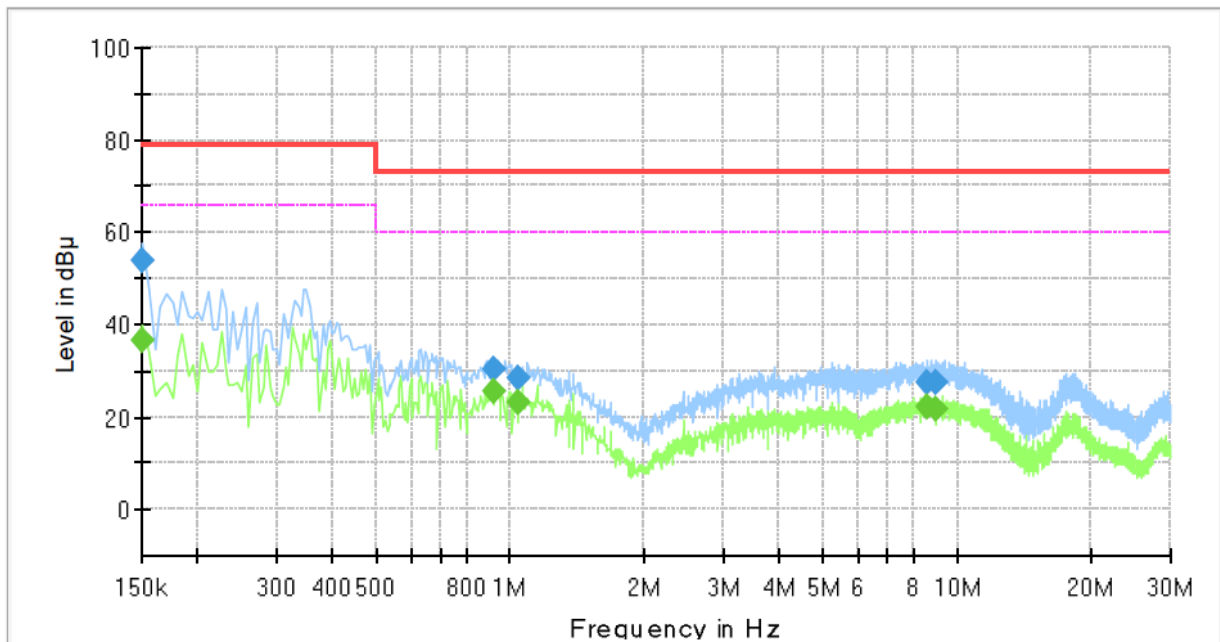
Frequency (MHz)	QuasiPeak (dBμV)	CAverage (dBμV)	Limit (dBμV)	Margin (dB)	Meas. Time (ms)	Bandwidth (kHz)	Line	Corr. (dB)
0.160000	---	36.51	66.00	29.49	1000.0	9.000	L1	19.4
0.160000	53.38	---	79.00	25.62	1000.0	9.000	L1	19.4
0.165000	---	36.28	66.00	29.72	1000.0	9.000	L1	19.4
0.165000	52.74	---	79.00	26.26	1000.0	9.000	L1	19.4
1.135000	---	22.62	60.00	37.38	1000.0	9.000	L1	20.1
1.135000	28.16	---	73.00	44.84	1000.0	9.000	L1	20.1
4.950000	---	22.01	60.00	37.99	1000.0	9.000	L1	19.6
4.950000	27.90	---	73.00	45.10	1000.0	9.000	L1	19.6
5.130000	---	21.67	60.00	38.33	1000.0	9.000	L1	19.6
5.130000	27.78	---	73.00	45.22	1000.0	9.000	L1	19.6
7.735000	---	22.53	60.00	37.47	1000.0	9.000	L1	19.6
7.735000	27.86	---	73.00	45.14	1000.0	9.000	L1	19.6

This report shall not be reproduced except in full, without the written approval of KES Co., Ltd.
The results shown in this test report refer only to the sample(s) tested unless otherwise stated.
The authenticity of the test report, contact kes@kes.co.kr

[NEUTRAL]

Common Information

Test Description:	Conducted Emission
Model No.:	XND-8083RV
Phase:	N
Mode:	
Operator Name:	KES



Final Result

Frequency (MHz)	QuasiPeak (dBμV)	CAverage (dBμV)	Limit (dBμV)	Margin (dB)	Meas. Time (ms)	Bandwidth (kHz)	Line	Corr. (dB)
0.150000	---	36.63	66.00	29.37	1000.0	9.000	N	19.4
0.150000	54.12	---	79.00	24.88	1000.0	9.000	N	19.4
0.915000	---	25.33	60.00	34.67	1000.0	9.000	N	20.1
0.915000	30.27	---	73.00	42.73	1000.0	9.000	N	20.1
1.035000	---	23.16	60.00	36.84	1000.0	9.000	N	20.1
1.035000	28.52	---	73.00	44.48	1000.0	9.000	N	20.1
8.540000	---	22.15	60.00	37.85	1000.0	9.000	N	19.7
8.540000	27.41	---	73.00	45.59	1000.0	9.000	N	19.7
8.975000	---	21.87	60.00	38.13	1000.0	9.000	N	19.7
8.975000	27.36	---	73.00	45.64	1000.0	9.000	N	19.7

◆ Calculation

QuasiPeak [dBμV] / CAverage [dBμV] = Reading Value [dBμV] + Corr. [dB]

QuasiPeak / CAverage : The Final Value

Reading Value : Not shown in the table.

Corr. : Correction values (LISN FACTOR + (Cable Loss + Pulse Limiter FACTOR))

This report shall not be reproduced except in full, without the written approval of KES Co., Ltd.
The results shown in this test report refer only to the sample(s) tested unless otherwise stated.
The authenticity of the test report, contact kes@kes.co.kr

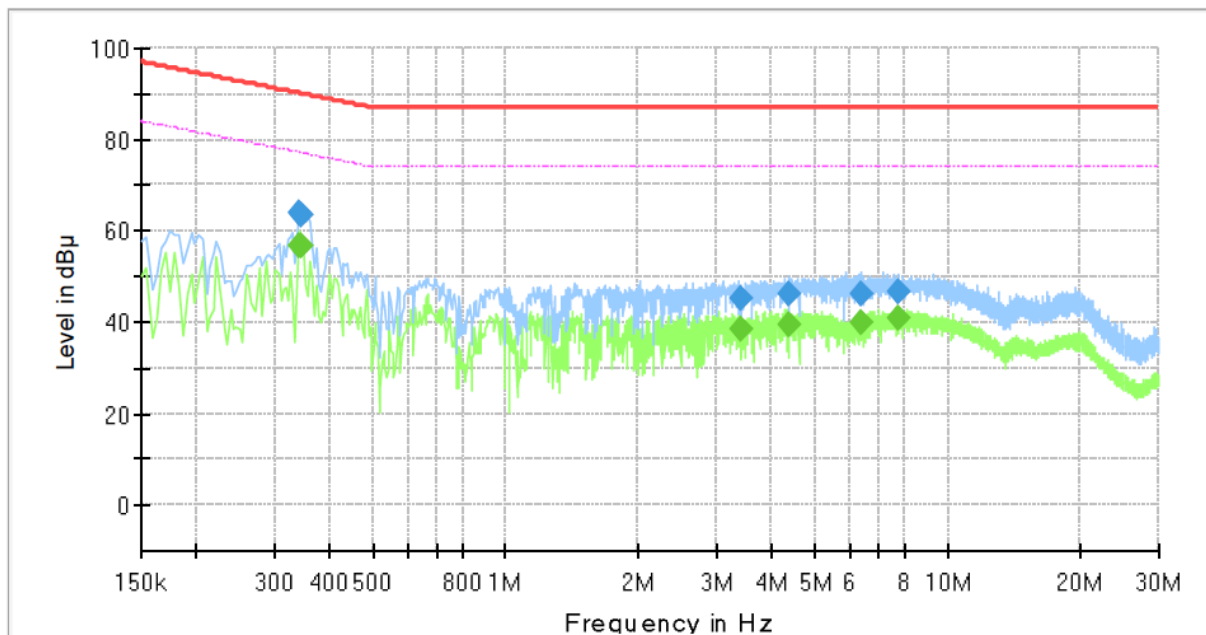
Conducted Emissions at Telecommunication Ports

■ DC Mode

[1 000 Mbps]

Common Information

Test Description:	Telecommunication Emission
Model No.:	XND-8083RV
Mode :	DC
Speed :	1 000 Mbps
Operator Name:	KES



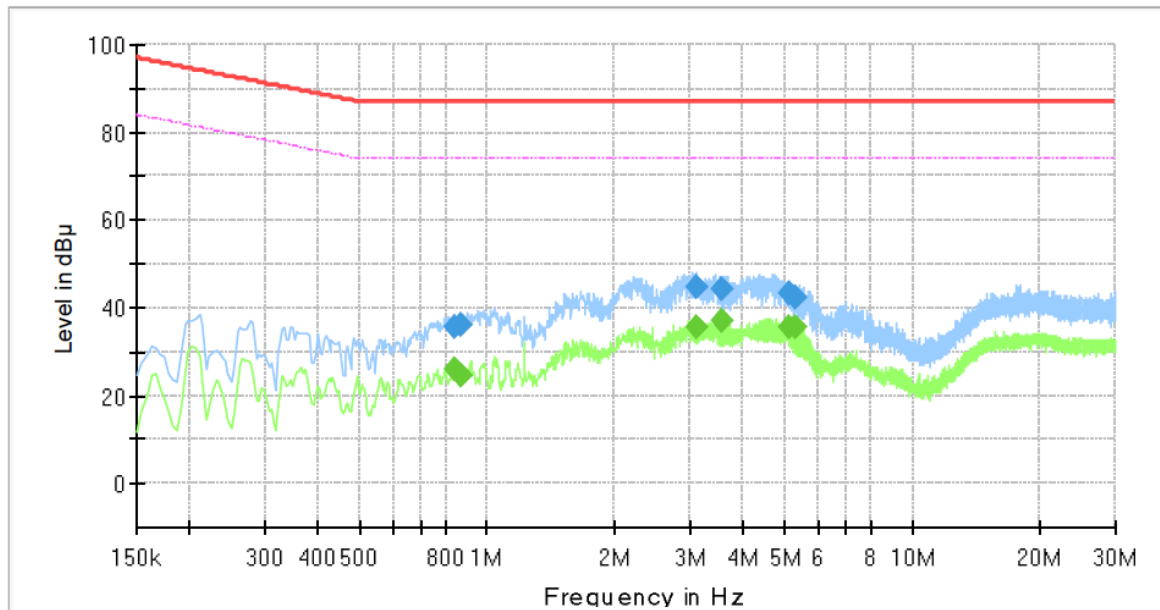
Final Result

Frequency (MHz)	QuasiPeak (dBμV)	CAverage (dBμV)	Limit (dBμV)	Margin (dB)	Meas. Time (ms)	Bandwidth (kHz)	Line	Corr. (dB)
0.342000	---	56.70	77.15	20.45	1000.0	9.000	Single Line	19.3
0.342000	63.86	---	90.15	26.29	1000.0	9.000	Single Line	19.3
0.346000	---	56.98	77.06	20.08	1000.0	9.000	Single Line	19.3
0.346000	63.72	---	90.06	26.34	1000.0	9.000	Single Line	19.3
3.394000	---	38.69	74.00	35.31	1000.0	9.000	Single Line	19.9
3.394000	45.41	---	87.00	41.59	1000.0	9.000	Single Line	19.9
4.394000	---	39.70	74.00	34.30	1000.0	9.000	Single Line	19.6
4.394000	46.02	---	87.00	40.98	1000.0	9.000	Single Line	19.6
6.402000	---	39.73	74.00	34.27	1000.0	9.000	Single Line	19.3
6.402000	46.00	---	87.00	41.00	1000.0	9.000	Single Line	19.3
7.690000	---	40.93	74.00	33.07	1000.0	9.000	Single Line	19.4
7.690000	46.49	---	87.00	40.51	1000.0	9.000	Single Line	19.4

This report shall not be reproduced except in full, without the written approval of KES Co., Ltd.
The results shown in this test report refer only to the sample(s) tested unless otherwise stated.
The authenticity of the test report, contact kes@kes.co.kr

PoE Mode
[1 000 Mbps]
Common Information

Test Description:	Telecommunication Emission
Model No.:	XND-8083RV
Mode :	PoE
Speed :	1 000 Mbps
Operator Name:	KES


Final Result

Frequency (MHz)	QuasiPeak (dBμV)	CAverage (dBμV)	Limit (dBμV)	Margin (dB)	Meas. Time (ms)	Bandwidth (kHz)	Line	Corr. (dB)
0.842000	---	25.84	74.00	48.16	1000.0	9.000	Single Line	19.9
0.842000	35.73	---	87.00	51.27	1000.0	9.000	Single Line	19.9
0.866000	---	24.54	74.00	49.46	1000.0	9.000	Single Line	19.9
0.866000	36.05	---	87.00	50.95	1000.0	9.000	Single Line	19.9
3.110000	---	35.62	74.00	38.38	1000.0	9.000	Single Line	20.0
3.110000	44.61	---	87.00	42.39	1000.0	9.000	Single Line	20.0
3.574000	---	37.25	74.00	36.75	1000.0	9.000	Single Line	19.9
3.574000	44.07	---	87.00	42.93	1000.0	9.000	Single Line	19.9
5.130000	---	35.47	74.00	38.53	1000.0	9.000	Single Line	19.5
5.130000	43.50	---	87.00	43.50	1000.0	9.000	Single Line	19.5
5.326000	---	35.70	74.00	38.30	1000.0	9.000	Single Line	19.4
5.326000	42.32	---	87.00	44.68	1000.0	9.000	Single Line	19.4

◆ Calculation

$$\text{QuasiPeak [dBuV]} / \text{CAverage [dBuV]} = \text{Reading Value [dBuV]} + \text{Corr. [dB]}$$

QuasiPeak / CAverage : The Final Value

Reading Value : Not shown in the table.

Corr. : Correction values (ISN FACTOR + (Cable Loss + Pulse Limiter FACTOR))

This report shall not be reproduced except in full, without the written approval of KES Co., Ltd.

The results shown in this test report refer only to the sample(s) tested unless otherwise stated.

The authenticity of the test report, contact kes@kes.co.kr



KES Co., Ltd.

3701, 40, Simin-daero 365beon-gil,
Dongan-gu, Anyang-si, Gyeonggi-do, 14057, Korea
Tel: +82-31-425-6200 / Fax: +82-31-424-0450
www.kes.co.kr

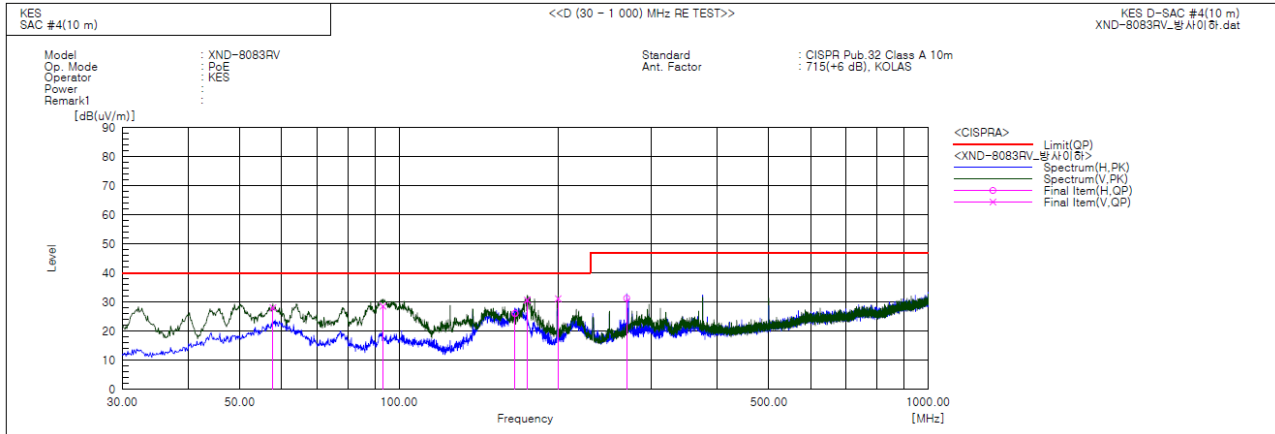
Report No.:

KES-EM-22T0663-R1

Page (44) of (72)

Radiated Electric Field Emissions(Below 1 GHz)

■ DC Mode



Final Result

No.	Frequency [MHz]	(P)	Reading QP [dB(uV)]	c.f [dB(1/m)]	Result QP [dB(uV/m)]	Limit QP [dB(uV/m)]	Margin QP [dB]	Height [cm]	Angle [deg]	Remark
1	57.766	V	49.8	-21.7	28.1	40.0	11.9	109.0	179.7	
2	93.293	V	52.3	-23.7	28.6	40.0	11.4	116.0	106.4	
3	165.679	H	50.5	-24.4	26.1	40.0	13.9	400.0	232.7	
4	174.773	V	54.6	-23.9	30.7	40.0	9.3	100.0	288.6	
5	199.871	V	52.2	-21.0	31.2	40.0	8.8	197.0	35.0	
6	269.469	H	50.1	-18.8	31.3	47.0	15.7	308.0	306.3	

This report shall not be reproduced except in full, without the written approval of KES Co., Ltd.
The results shown in this test report refer only to the sample(s) tested unless otherwise stated.
The authenticity of the test report, contact kes@kes.co.kr



KES Co., Ltd.

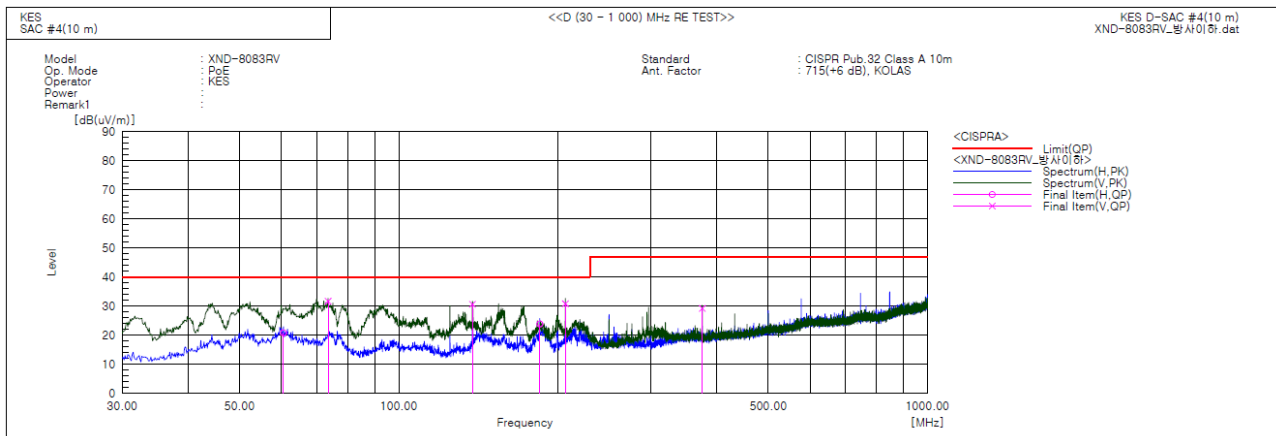
3701, 40, Simin-daero 365beon-gil,
Dongan-gu, Anyang-si, Gyeonggi-do, 14057, Korea
Tel: +82-31-425-6200 / Fax: +82-31-424-0450
www.kes.co.kr

Report No.:

KES-EM-22T0663-R1

Page (45) of (72)

PoE Mode



Final Result

No.	Frequency [MHz]	(P)	Reading QP [dB(uV)]	c.f [dB(1/m)]	Result QP [dB(uV/m)]	Limit QP [dB(uV/m)]	Margin QP [dB]	Height [cm]	Angle [deg]	Remark
1	60.555	H	42.9	-22.1	20.8	40.0	19.2	305.0	346.2	
2	73.529	V	58.0	-26.3	31.7	40.0	8.3	121.0	287.6	
3	137.913	V	56.1	-25.5	30.6	40.0	9.4	102.0	86.3	
4	184.836	H	46.8	-22.9	23.9	40.0	16.1	302.0	346.2	
5	206.661	V	51.6	-20.8	30.8	40.0	9.2	196.0	63.5	
6	374.956	V	44.0	-14.8	29.2	47.0	17.8	100.0	177.4	

◆ Calculation – SEMI ANECHOIC CHAMBER #4(10 m)

Result(QP) [dB(μ V/m)] = (Reading(QP)[dB(μ V)] + c.f[dB(1/m)])

Margin(QP)[dB] = Limit[dB(μ V/m)] - Result(QP) [dB(μ V/m)]

Reading(QP) : Reading value, Result(QP) : Reading value + Factor value

Limit(QP) : Limit value, c.f : (ANT Factor + Cable Loss - Preamp Factor), Margin: Margin value

This report shall not be reproduced except in full, without the written approval of KES Co., Ltd.
The results shown in this test report refer only to the sample(s) tested unless otherwise stated.
The authenticity of the test report, contact kes@kes.co.kr



KES Co., Ltd.

3701, 40, Simin-daero 365beon-gil,
Dongan-gu, Anyang-si, Gyeonggi-do, 14057, Korea
Tel: +82-31-425-6200 / Fax: +82-31-424-0450
www.kes.co.kr

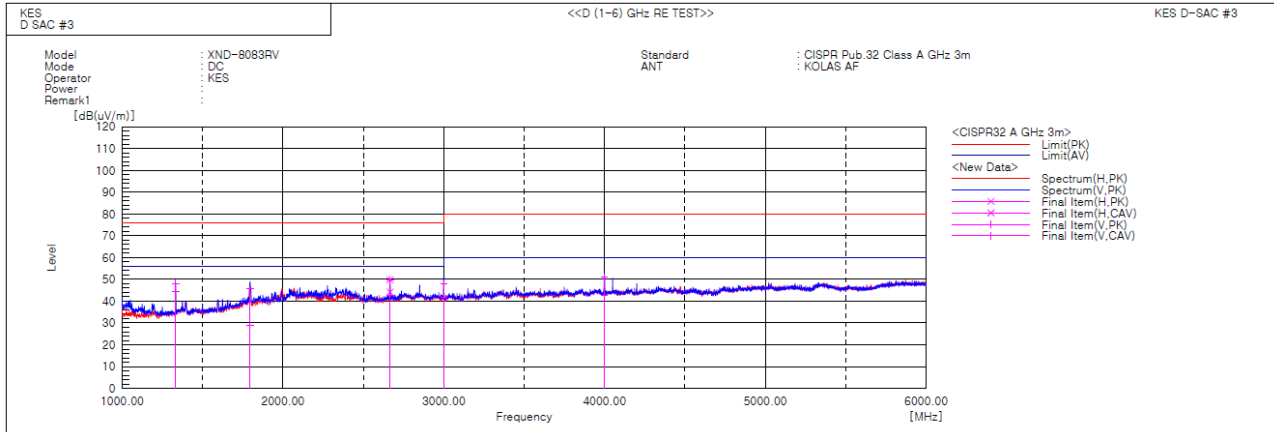
Report No.:

KES-EM-22T0663-R1

Page (46) of (72)

Radiated Electric Field Emissions(Above 1 GHz)

■ DC Mode



Final Result

No.	Frequency [MHz]	(P)	Reading PK [dB(uV)]	Reading CAV [dB(uV)]	c.f [dB(1/m)]	Result PK [dB(uV/m)]	Result CAV [dB(uV/m)]	Limit PK [dB(uV/m)]	Limit AV [dB(uV/m)]	Margin PK [dB]	Margin CAV [dB]	Height [cm]	Angle [deg]	Remark
1	1333.118	V	55.2	51.5	-7.0	48.2	44.5	76.0	56.0	27.8	11.5	100.0	355.9	
2	1795.065	V	47.8	31.2	-2.2	45.6	29.0	76.0	56.0	30.4	27.0	100.0	161.3	
3	2666.195	H	48.5	42.9	1.3	49.8	44.2	76.0	56.0	26.2	11.8	100.0	313.9	
4	2666.778	V	48.3	41.2	1.3	49.6	42.5	76.0	56.0	26.4	13.5	100.0	11.2	
5	3000.916	V	45.7	39.4	2.2	47.9	41.6	80.0	60.0	32.1	18.4	100.0	106.9	
6	3999.128	V	45.3	36.7	5.8	51.1	42.5	80.0	60.0	28.9	17.5	100.0	73.5	

This report shall not be reproduced except in full, without the written approval of KES Co., Ltd.
The results shown in this test report refer only to the sample(s) tested unless otherwise stated.
The authenticity of the test report, contact kes@kes.co.kr



KES Co., Ltd.

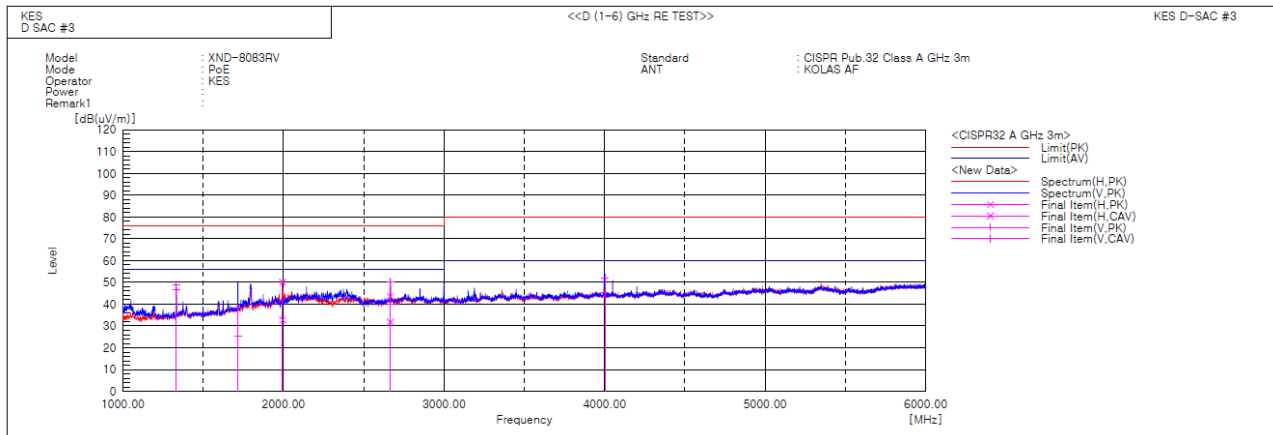
3701, 40, Simin-daero 365beon-gil,
Dongan-gu, Anyang-si, Gyeonggi-do, 14057, Korea
Tel: +82-31-425-6200 / Fax: +82-31-424-0450
www.kes.co.kr

Report No.:

KES-EM-22T0663-R1

Page (47) of (72)

PoE Mode



Final Result

No.	Frequency [MHz]	(P)	Reading PK [dB(uV)]	Reading CAV [dB(uV)]	c.f [dB(1/m)]	Result PK [dB(uV/m)]	Result CAV [dB(uV/m)]	Limit PK [dB(uV/m)]	Limit AV [dB(uV/m)]	Margin PK [dB]	Margin CAV [dB]	Height [cm]	Angle [deg]	Remark
1	1333.156	V	55.8	53.6	-7.0	48.8	46.6	76.0	56.0	27.2	9.4	100.0	38.7	
2	1716.996	V	41.5	28.7	-3.3	38.2	25.4	76.0	56.0	37.8	30.6	100.0	38.7	
3	1995.175	H	51.2	33.9	-1.1	50.1	32.8	76.0	56.0	25.9	23.2	100.0	167.7	
4	2666.354	H	42.2	30.5	1.3	43.5	31.8	76.0	56.0	32.5	24.2	100.0	182.9	
5	2666.716	V	48.9	38.6	1.3	50.2	39.9	76.0	56.0	25.8	16.1	100.0	355.8	
6	4001.851	V	46.3	39.3	5.8	52.1	45.1	80.0	60.0	27.9	14.9	100.0	69.9	

Calculation

Result(PK/CAV) [dB(μ V/m)] = (Reading(PK/CAV)[dB(μ V)] + c.f[dB(1/m)])

Margin(PK/CAV)[dB] = Limit[dB(μ V/m)] - Result(PK/CAV) [dB(μ V/m)]

Reading(PK/CAV) : Reading value, Result(PK/CAV) : Reading value + Factor value

Limit(QP) : Limit value, c.f : (ANT Factor + Cable Loss - Preamp Factor), Margin: Margin value

This report shall not be reproduced except in full, without the written approval of KES Co., Ltd.

The results shown in this test report refer only to the sample(s) tested unless otherwise stated.

The authenticity of the test report, contact kes@kes.co.kr

**KES Co., Ltd.**

3701, 40, Simin-daero 365beon-gil,
Dongan-gu, Anyang-si, Gyeonggi-do, 14057, Korea
Tel: +82-31-425-6200 / Fax: +82-31-424-0450
www.kes.co.kr

Report No.:

KES-EM-22T0663-R1

Page (48) of (72)

Harmonic Current Emissions and Voltage Fluctuations and Flicker

■ DC Mode

Average harmonic current results

Hn	I _{eff} [A]	% of Limit	Limit [A]	Result
1	0.052			
2	0.002	0.180	1.080	n/a
3	0.046	1.986	2.300	PASS
4	0.003	0.596	0.430	n/a
5	0.046	4.050	1.140	PASS
6	0.002	0.795	0.300	n/a
7	0.045	5.867	0.770	PASS
8	0.002	1.027	0.230	n/a
9	0.042	10.451	0.400	PASS
10	0.002	1.279	0.184	n/a
11	0.039	11.929	0.330	PASS
12	0.002	1.505	0.153	n/a
13	0.037	17.495	0.210	PASS
14	0.002	1.765	0.131	n/a
15	0.034	22.396	0.150	PASS
16	0.002	1.915	0.115	n/a
17	0.030	23.042	0.132	PASS
18	0.002	2.109	0.102	n/a
19	0.027	23.120	0.118	PASS
20	0.002	2.325	0.092	n/a
21	0.024	15.101	0.161	PASS
22	0.002	2.513	0.084	n/a
23	0.021	14.278	0.147	PASS
24	0.002	2.697	0.077	n/a
25	0.018	13.440	0.135	PASS
26	0.002	2.822	0.071	n/a
27	0.016	12.405	0.125	PASS
28	0.002	3.001	0.066	n/a
29	0.013	11.081	0.116	PASS
30	0.002	3.106	0.061	n/a
31	0.011	10.126	0.109	PASS
32	0.002	3.295	0.058	n/a
33	0.009	9.052	0.102	PASS
34	0.002	3.374	0.054	n/a
35	0.008	8.582	0.096	PASS
36	0.002	3.516	0.051	n/a
37	0.007	8.074	0.091	PASS
38	0.002	3.591	0.048	n/a
39	0.007	8.080	0.087	PASS
40	0.002	3.591	0.046	n/a

Note: Harmonic currents less than 0.6 % of the input current measured under the test conditions, or less than 5 mA, whichever is greater, are disregarded.

* Application of limits for average is 100% except for odd harmonics from 21 to 39, where 150% applies.

This report shall not be reproduced except in full, without the written approval of KES Co., Ltd.
The results shown in this test report refer only to the sample(s) tested unless otherwise stated.
The authenticity of the test report, contact kes@kes.co.kr



Test Data - Harmonics (continued)

Maximum harmonic current results				
Hn	I _{eff} [A]	% of Limit	Limit [A]	Result
1	0.052			
2	0.002	0.141	1.620	n/a
3	0.046	1.344	3.450	PASS
4	0.003	0.449	0.645	n/a
5	0.046	2.710	1.710	PASS
6	0.003	0.582	0.450	n/a
7	0.045	3.927	1.155	PASS
8	0.003	0.757	0.345	n/a
9	0.042	7.017	0.600	PASS
10	0.003	0.936	0.276	n/a
11	0.040	7.984	0.495	PASS
12	0.003	1.095	0.230	n/a
13	0.037	11.697	0.315	PASS
14	0.003	1.309	0.197	n/a
15	0.034	14.975	0.225	PASS
16	0.002	1.404	0.173	n/a
17	0.031	15.460	0.199	PASS
18	0.002	1.572	0.153	n/a
19	0.027	15.480	0.178	PASS
20	0.002	1.689	0.138	n/a
21	0.024	15.178	0.161	PASS
22	0.002	1.802	0.125	n/a
23	0.021	14.341	0.147	PASS
24	0.002	1.938	0.115	n/a
25	0.018	13.533	0.135	PASS
26	0.002	2.049	0.106	n/a
27	0.016	12.520	0.125	PASS
28	0.002	2.196	0.099	n/a
29	0.013	11.202	0.116	PASS
30	0.002	2.242	0.092	n/a
31	0.011	10.251	0.109	PASS
32	0.002	2.350	0.086	n/a
33	0.009	9.198	0.102	PASS
34	0.002	2.444	0.081	n/a
35	0.008	8.723	0.096	PASS
36	0.002	2.538	0.077	n/a
37	0.008	8.236	0.091	PASS
38	0.002	2.641	0.073	n/a
39	0.007	8.192	0.087	PASS
40	0.002	2.561	0.069	n/a

Note: Harmonic currents less than 0.6 % of the input current measured under the test conditions, or less than 5 mA, whichever is greater, are disregarded.

* Application of limits for average is 100% except for odd harmonics from 21 to 39, where 150% applies.

**KES Co., Ltd.**

3701, 40, Simin-daero 365beon-gil,
Dongan-gu, Anyang-si, Gyeonggi-do, 14057, Korea
Tel: +82-31-425-6200 / Fax: +82-31-424-0450
www.kes.co.kr

Report No.:
KES-EM-22T0663-R1
Page (50) of (72)

Test Data - Voltage Fluctuations
Maximum Flicker results

■ DC Mode

Flicker Measurements					
	Plt	Max Pst	Max Dc	Max Dmax	Max Tmax
Line 1:	0.028	0.028	0	< 0.2	0
Limits:	0.65	1	3.3	4	0.5
Results:	PASS	PASS	PASS	PASS	PASS

This report shall not be reproduced except in full, without the written approval of KES Co., Ltd.
The results shown in this test report refer only to the sample(s) tested unless otherwise stated.
The authenticity of the test report, contact kes@kes.co.kr

Test Setup Photos and Configuration

Conducted Emissions at Mains Power Ports

■ DC Mode



This report shall not be reproduced except in full, without the written approval of KES Co., Ltd.
The results shown in this test report refer only to the sample(s) tested unless otherwise stated.
The authenticity of the test report, contact kes@kes.co.kr

Conducted Emissions at Telecommunication Ports

■ DC Mode



This report shall not be reproduced except in full, without the written approval of KES Co., Ltd.
The results shown in this test report refer only to the sample(s) tested unless otherwise stated.
The authenticity of the test report, contact kes@kes.co.kr

■ PoE Mode



This report shall not be reproduced except in full, without the written approval of KES Co., Ltd.
The results shown in this test report refer only to the sample(s) tested unless otherwise stated.
The authenticity of the test report, contact kes@kes.co.kr

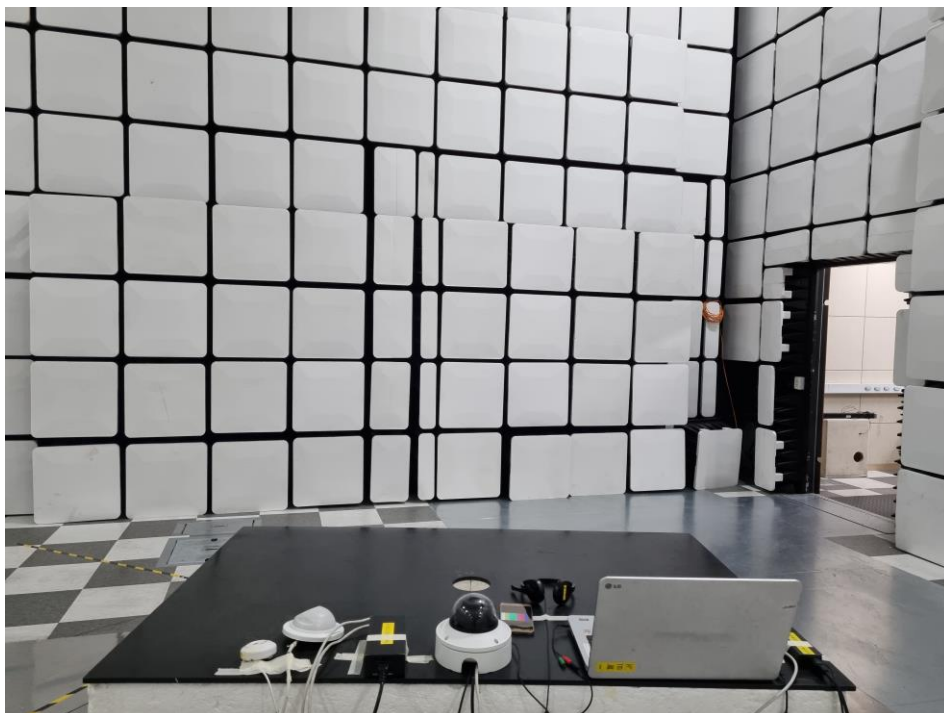
Radiated Electric Field Emissions(Below 1 GHz)

■ DC Mode



This report shall not be reproduced except in full, without the written approval of KES Co., Ltd.
The results shown in this test report refer only to the sample(s) tested unless otherwise stated.
The authenticity of the test report, contact kes@kes.co.kr

■ PoE Mode



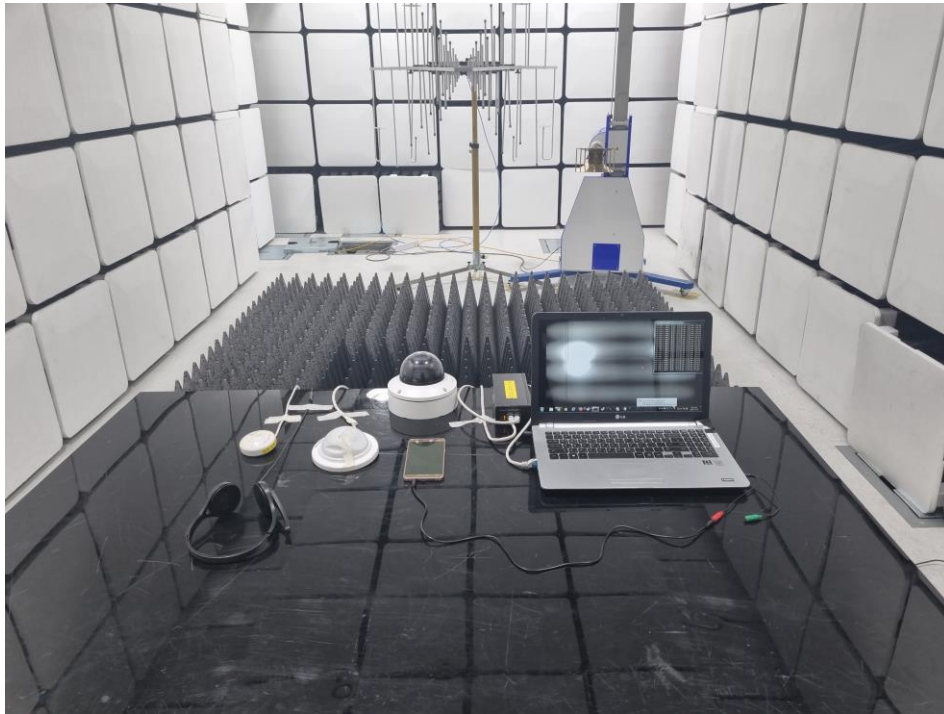
This report shall not be reproduced except in full, without the written approval of KES Co., Ltd.
The results shown in this test report refer only to the sample(s) tested unless otherwise stated.
The authenticity of the test report, contact kes@kes.co.kr

Radiated Electric Field Emissions(Above 1 GHz)

■ DC Mode



This report shall not be reproduced except in full, without the written approval of KES Co., Ltd.
The results shown in this test report refer only to the sample(s) tested unless otherwise stated.
The authenticity of the test report, contact kes@kes.co.kr

■ PoE Mode

This report shall not be reproduced except in full, without the written approval of KES Co., Ltd.
The results shown in this test report refer only to the sample(s) tested unless otherwise stated.
The authenticity of the test report, contact kes@kes.co.kr

Harmonic Current Emissions and Voltage Fluctuations and Flicker

■ DC Mode



This report shall not be reproduced except in full, without the written approval of KES Co., Ltd.
The results shown in this test report refer only to the sample(s) tested unless otherwise stated.
The authenticity of the test report, contact kes@kes.co.kr

Electrostatic Discharge

■ DC Mode



■ PoE Mode



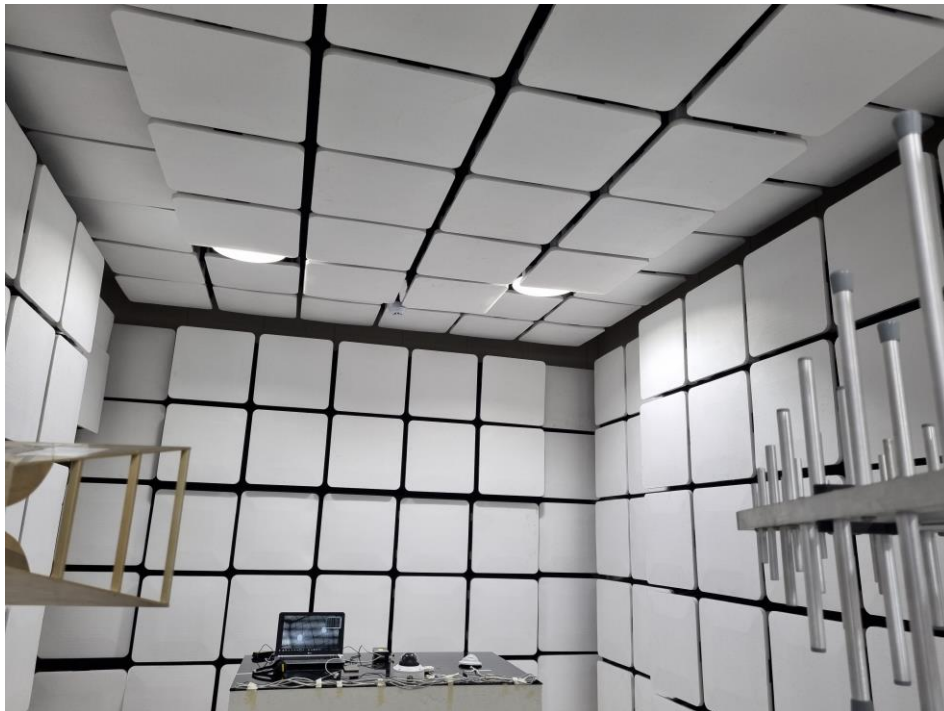
This report shall not be reproduced except in full, without the written approval of KES Co., Ltd.
The results shown in this test report refer only to the sample(s) tested unless otherwise stated.
The authenticity of the test report, contact kes@kes.co.kr

Radiated Electric Field Immunity

■ DC Mode



■ PoE Mode



This report shall not be reproduced except in full, without the written approval of KES Co., Ltd.
The results shown in this test report refer only to the sample(s) tested unless otherwise stated.
The authenticity of the test report, contact kes@kes.co.kr

Electrical Fast Transients/Bursts

■ DC Mode



■ PoE Mode



This report shall not be reproduced except in full, without the written approval of KES Co., Ltd.
The results shown in this test report refer only to the sample(s) tested unless otherwise stated.
The authenticity of the test report, contact kes@kes.co.kr

Surge Transients

■ DC Mode



■ PoE Mode



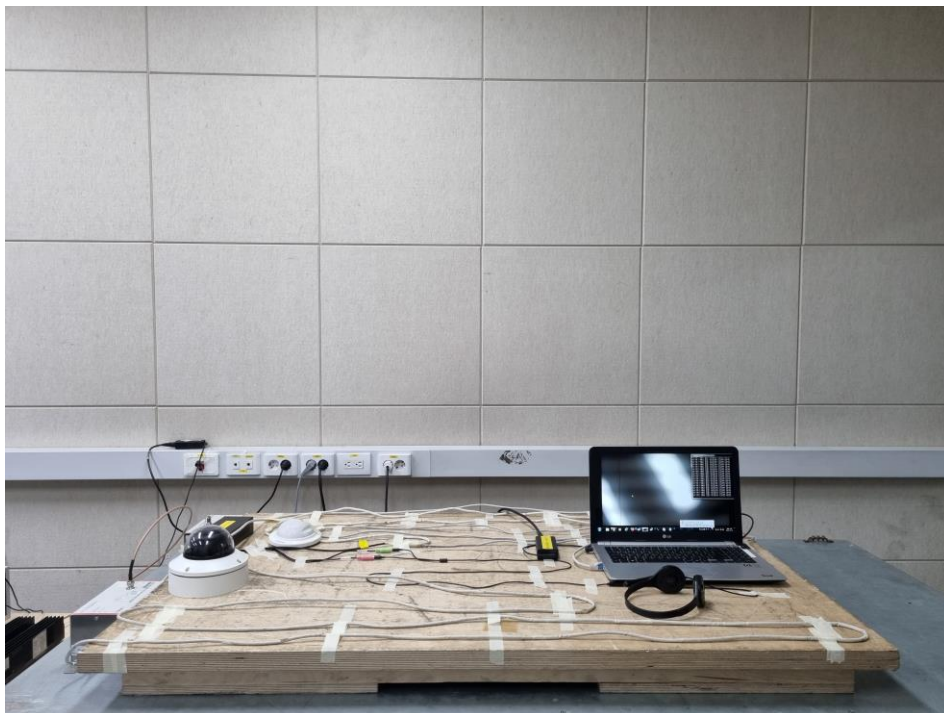
This report shall not be reproduced except in full, without the written approval of KES Co., Ltd.
The results shown in this test report refer only to the sample(s) tested unless otherwise stated.
The authenticity of the test report, contact kes@kes.co.kr

Conducted Disturbance

■ DC Mode



■ PoE Mode



This report shall not be reproduced except in full, without the written approval of KES Co., Ltd.
The results shown in this test report refer only to the sample(s) tested unless otherwise stated.
The authenticity of the test report, contact kes@kes.co.kr

Voltage Dips and Short Interruptions

■ DC Mode



This report shall not be reproduced except in full, without the written approval of KES Co., Ltd.
The results shown in this test report refer only to the sample(s) tested unless otherwise stated.
The authenticity of the test report, contact kes@kes.co.kr

EUT External Photographs

(Top)



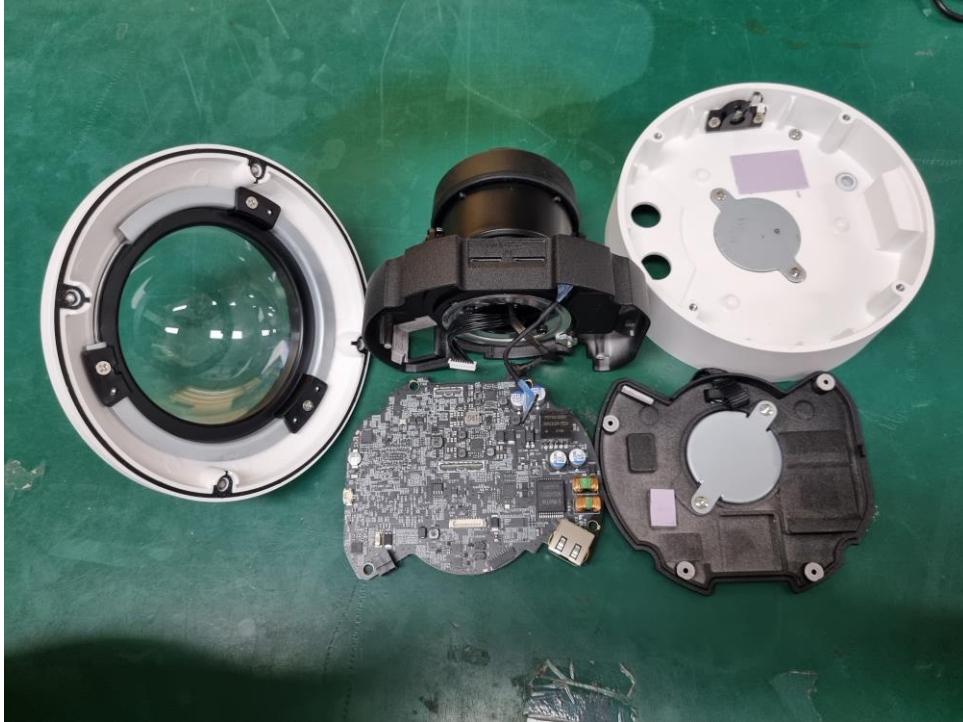
(Bottom)



This report shall not be reproduced except in full, without the written approval of KES Co., Ltd.
The results shown in this test report refer only to the sample(s) tested unless otherwise stated.
The authenticity of the test report, contact kes@kes.co.kr

EUT Internal Photographs

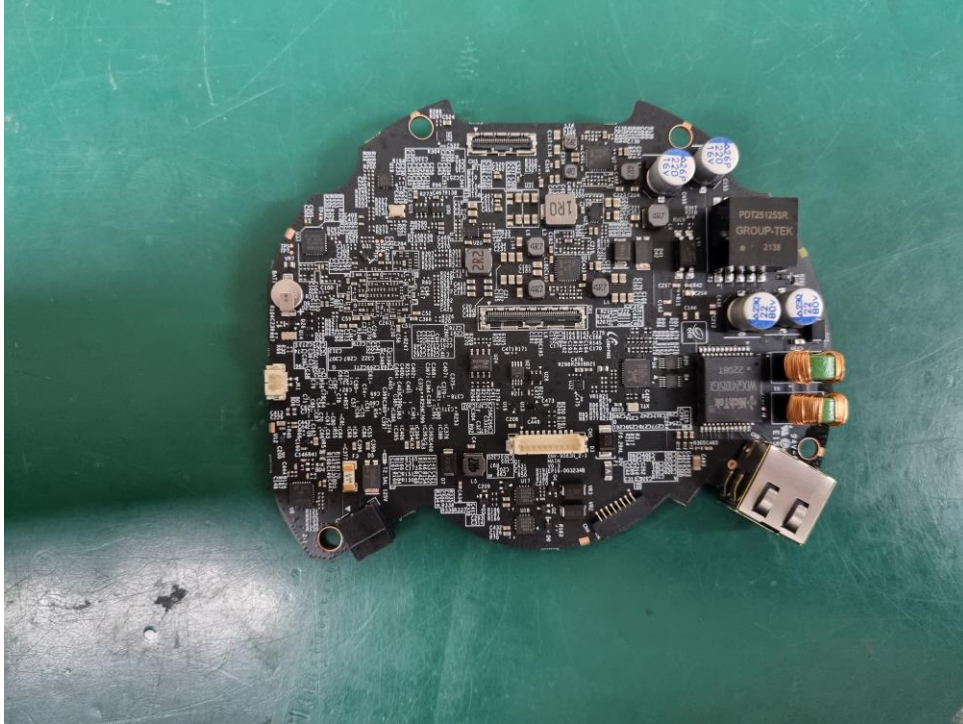
(Internal View)



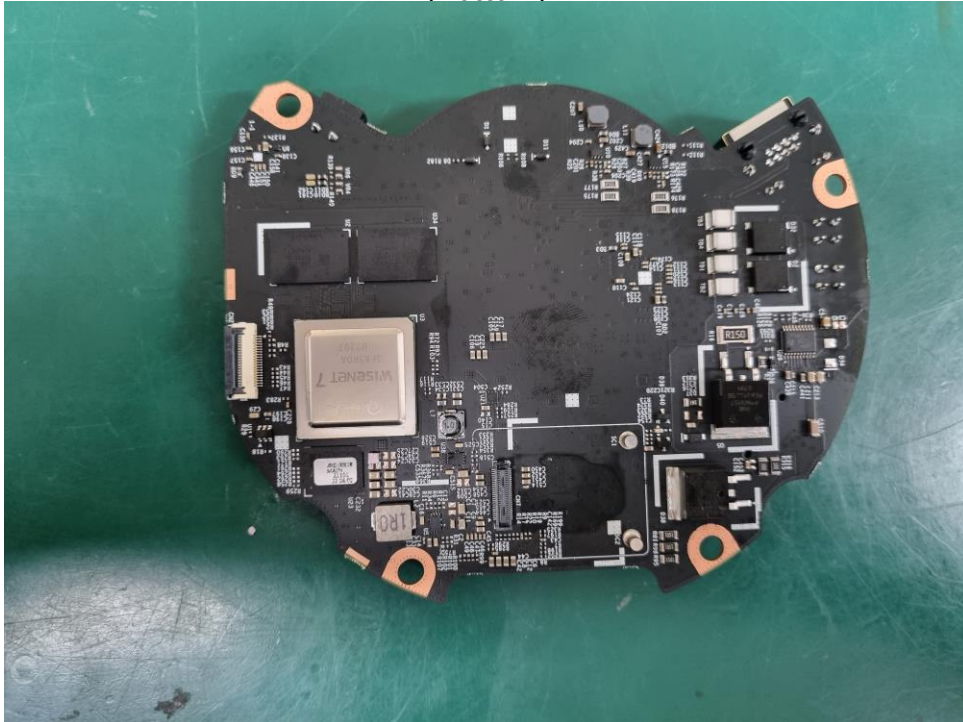
This report shall not be reproduced except in full, without the written approval of KES Co., Ltd.
The results shown in this test report refer only to the sample(s) tested unless otherwise stated.
The authenticity of the test report, contact kes@kes.co.kr

EUT Internal View – Board 1

(Top)



(Bottom)



This report shall not be reproduced except in full, without the written approval of KES Co., Ltd.
The results shown in this test report refer only to the sample(s) tested unless otherwise stated.
The authenticity of the test report, contact kes@kes.co.kr

EUT Internal View – Board 2

(Top)



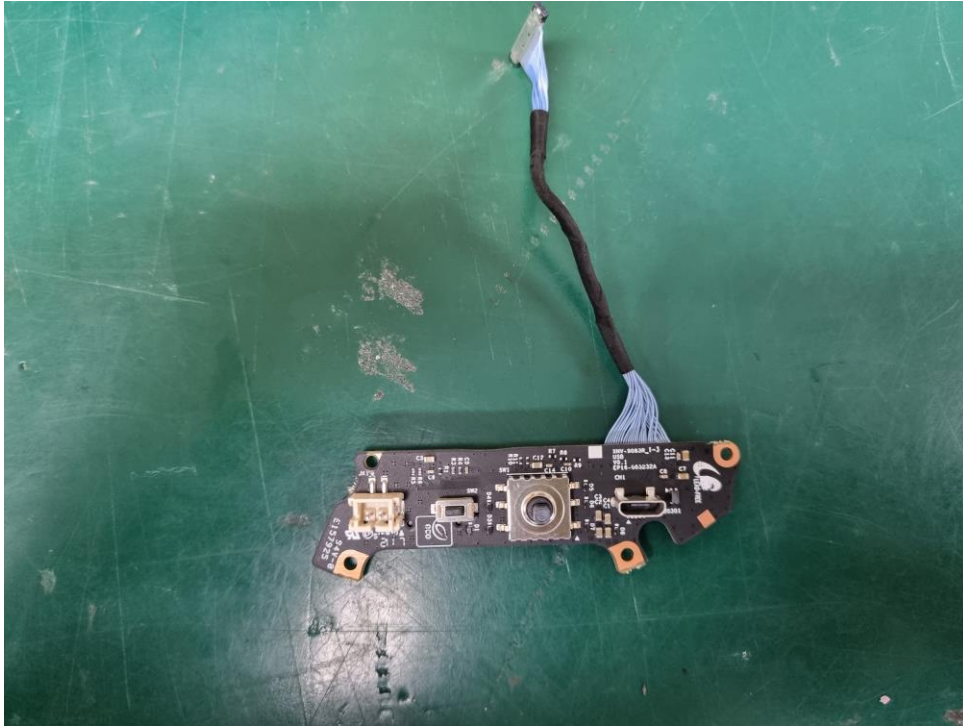
(Bottom)



This report shall not be reproduced except in full, without the written approval of KES Co., Ltd.
The results shown in this test report refer only to the sample(s) tested unless otherwise stated.
The authenticity of the test report, contact kes@kes.co.kr

EUT Internal View – Board 3

(Top)



(Bottom)



This report shall not be reproduced except in full, without the written approval of KES Co., Ltd.
The results shown in this test report refer only to the sample(s) tested unless otherwise stated.
The authenticity of the test report, contact kes@kes.co.kr

EUT Internal View – Board 4

(Top)



(Bottom)



This report shall not be reproduced except in full, without the written approval of KES Co., Ltd.
The results shown in this test report refer only to the sample(s) tested unless otherwise stated.
The authenticity of the test report, contact kes@kes.co.kr

EUT Internal View – Lens Board

(Top)

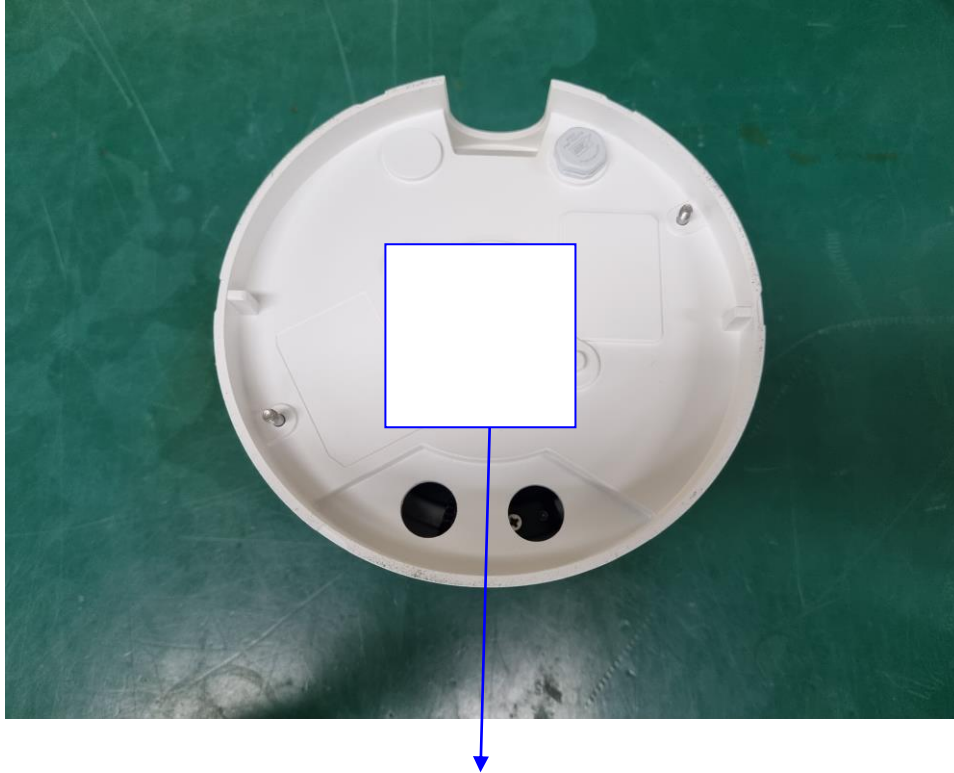


(Bottom)



This report shall not be reproduced except in full, without the written approval of KES Co., Ltd.
The results shown in this test report refer only to the sample(s) tested unless otherwise stated.
The authenticity of the test report, contact kes@kes.co.kr

Label and Location



NETWORK CAMERA

Model No : XND-8083RV

Manufacturer : HANWHA VISION VIETNAM COMPANY LIMITED

Made in Vietnam

